

Dell E2722H/E2722HS Monitor

Dell Display Manager

User's Guide

Model : E2722H/E2722HS
Regulatory model : E2722Hc/E2722HSc



 **NOTE:** A NOTE indicates important information that helps you make better use of your computer.

 **CAUTION:** A CAUTION indicates potential damage to hardware or loss of data if instructions are not followed.

 **WARNING:** A WARNING indicates a potential for property damage, personal injury, or death.

Copyright © 2021 Dell Inc. or its subsidiaries. All rights reserved. Dell, EMC, and other trademarks are trademarks of Dell Inc. or its subsidiaries. Other trademarks may be trademarks of their respective owners.

2021 – 08

Rev. A00

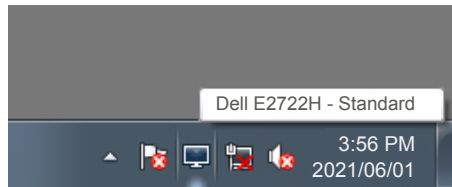
Contents

Overview	4
Using The Quick Settings Dialog.....	6
Setting Basic Display Functions.....	9
Assigning Preset Modes To Applications	11
Organizing Windows With Easy Arrange	13
Managing Multiple Video Inputs.....	18
Restoring Application Positions.....	20
Attaching DDM to Active Window (Windows 10 only)	23
Applying Energy Conservation Features	24
Other Shortcut Keys	25
Troubleshooting.....	27

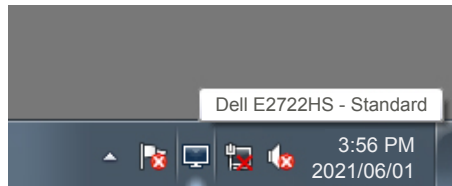
Overview

Dell Display Manager is a Windows application used to manage a monitor or a group of monitors. It enables manual adjustment of the displayed image, assignment of automatic settings, energy management, image rotation and other features on selected Dell models. After installation, Dell Display Manager will run each time the system starts and will place its icon in the notification tray. Information about monitors connected to the system is always available when hovering over the notification tray icon.

E2722H



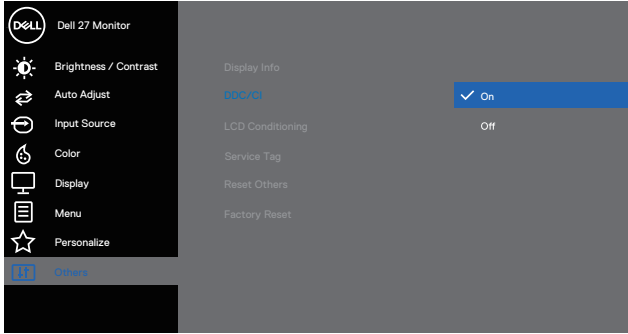
E2722HS



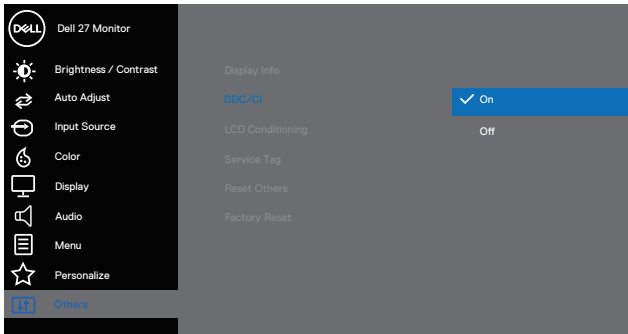
NOTE: Dell Display Manager uses DDC/CI channel to communicate with your monitor. Ensure that DDC/CI is enabled in the menu as follows.



E2722H



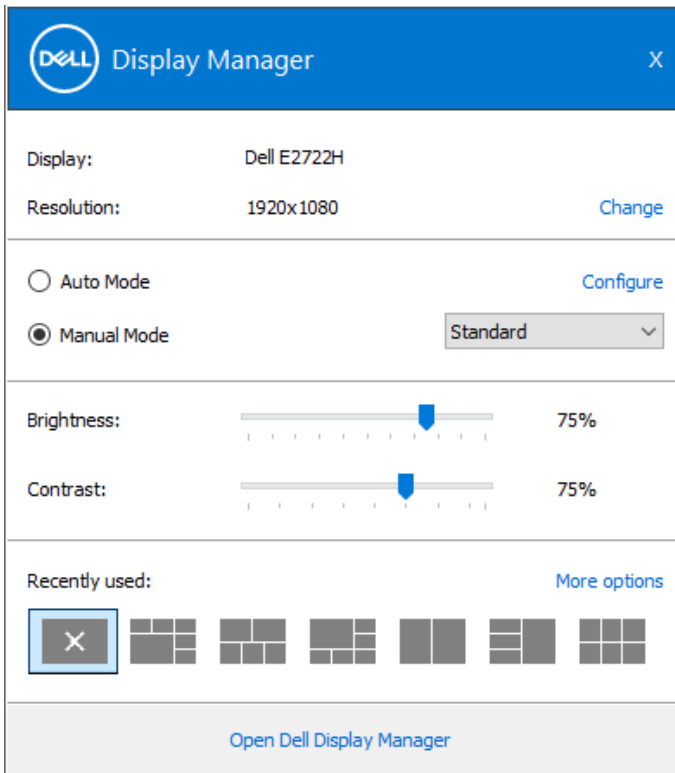
E2722HS



Using The Quick Settings Dialog

Clicking Dell Display Manager's notification tray icon opens the **Quick Settings** dialog box. When more than one supported Dell model is connected to the system, a specific target monitor can be selected using the menu provided. The **Quick Settings** dialog box enables convenient adjustment of the monitor's brightness and contrast levels. You can select **Manual Mode** or **Auto Mode**, and the screen resolution can be changed.

E2722H



E2722HS

Dell Display Manager X

Display: Dell E2722HS

Resolution: 1920x1080 [Change](#)

Auto Mode [Configure](#)

Manual Mode Standard ▾

Brightness: 75%

Contrast: 75%

Recently used: [More options](#)

[Open Dell Display Manager](#)

The **Quick Settings** dialog box also provides access to Dell Display Manager's advanced user interface which is used to adjust Basic functions, configure **Auto Mode** and access other features.



 **NOTE:**

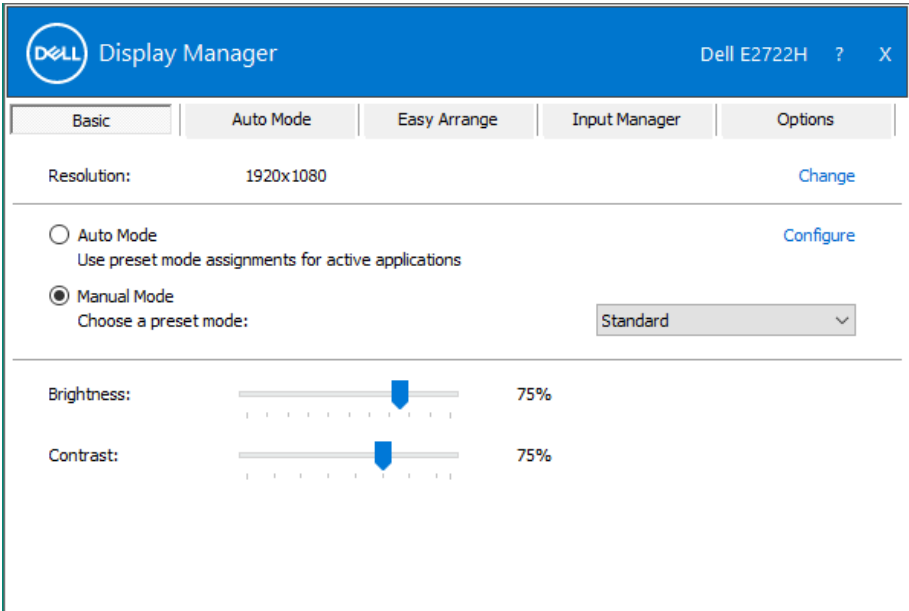
Feature	Function	Description
Quick DDM Access	Quick key to call up DDM UI.	Ctrl+Shift+D Press Page Up/Page Down key or click on ">" to flip through all Easy Arrange layouts.
	Control individual monitor in multi-monitor setup	Select the monitor from the dropdown box. If more than one monitor is connected to your computer, an icon appears on the selected monitor for a second so you know which monitor you have selected. Move DDM UI to the monitor to be controlled. Press Ctrl+Shift+D to bring up the mini UI under the mouse pointer.



Setting Basic Display Functions

You can select **Manual Mode** to manually select a preset mode or select **Auto Mode** that applies a preset mode based on the active application. An on-screen message displays the current preset mode whenever it changes. The selected monitor's **Brightness** and **Contrast** can also be directly adjusted from the **Basic** tab.

E2722H



E2722HS

Dell Display Manager Dell E2722HS ? X

Basic Auto Mode Easy Arrange Input Manager Options

Resolution: 1920x1080 [Change](#)

Auto Mode [Configure](#)
Use preset mode assignments for active applications

Manual Mode
Choose a preset mode: Standard

Brightness: 75%

Contrast: 75%

NOTE: When multiple Dell monitors are connected, select “Enable display matrix control” to apply brightness, contrast and color presets controls to all monitors.



Assigning Preset Modes To Applications

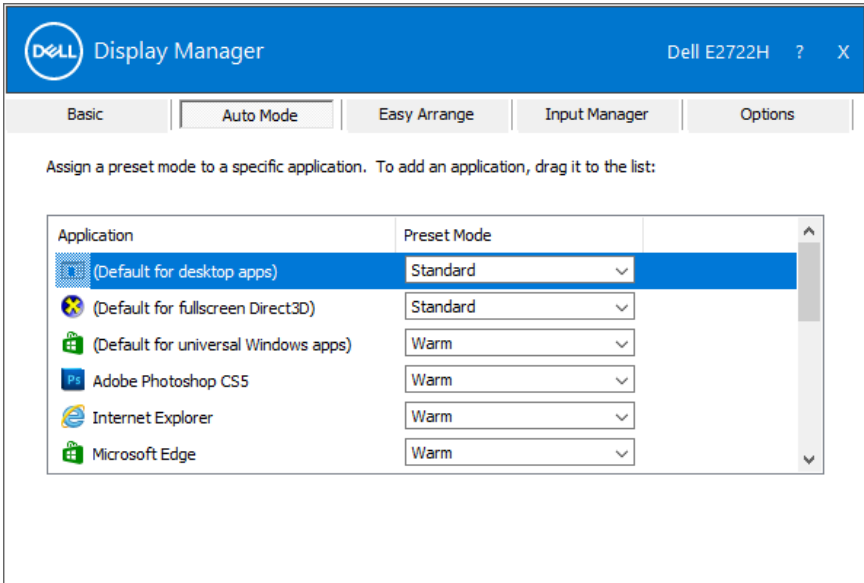
The **Auto Mode** tab enables you to associate a specific **Preset Mode** with a specific application, and apply it automatically. When **Auto Mode** is enabled, Dell Display Manager will automatically switch to the corresponding **Preset Mode** whenever the associated application is activated. The **Preset Mode** assigned to a particular application may be the same on each connected monitor, or it can vary from one monitor to the next.

Dell Display Manager is pre-configured for many popular applications. To add a new application to the assignment list, simply drag the application from the desktop, Windows Start Menu or elsewhere, and drop it onto the current list.

NOTE: Preset Mode assignments for batch files, scripts, loaders, and non-executable files such as zip archives or packed files, are not supported.

You can also configure the Game preset mode to be used whenever a Direct3D application runs in full-screen mode. To prevent an application from using mode, assign a different preset mode to it.

E2722H



Dell Display Manager Dell E2722HS ? X

Basic Auto Mode Easy Arrange Input Manager Options

Assign a preset mode to a specific application. To add an application, drag it to the list:

Application	Preset Mode
(Default for desktop apps)	Standard
(Default for fullscreen Direct3D)	Standard
(Default for universal Windows apps)	Warm
Adobe Photoshop CS5	Warm
Internet Explorer	Warm
Microsoft Edge	Warm

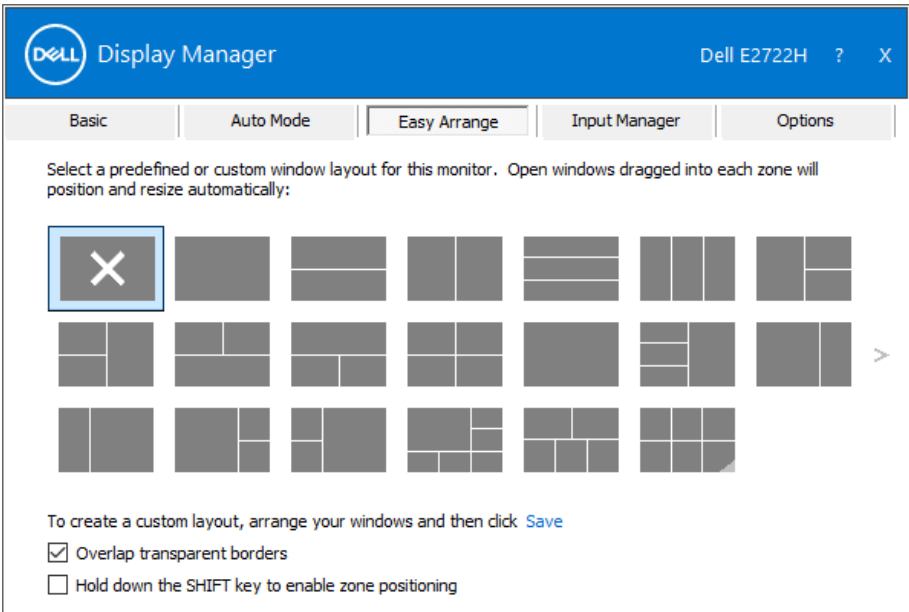


Organizing Windows With Easy Arrange

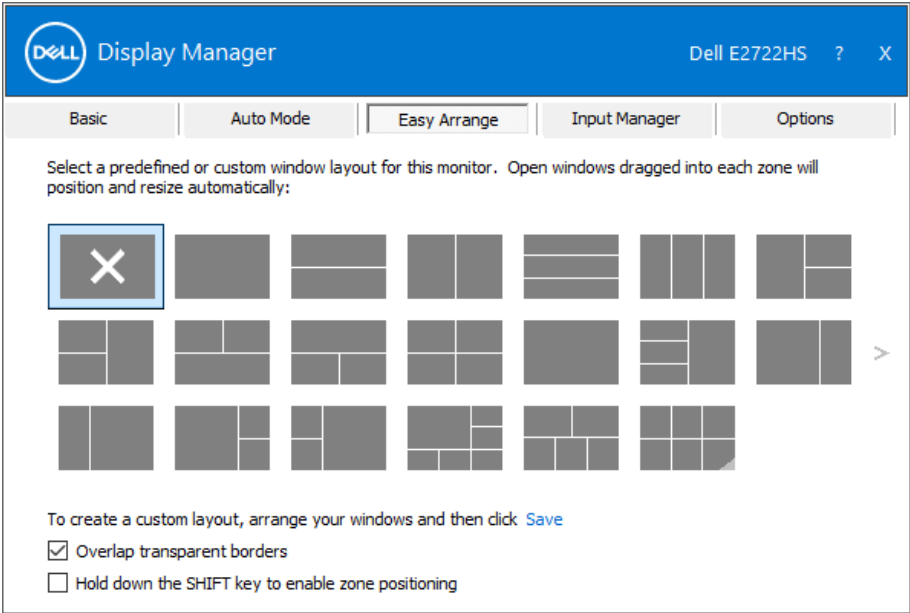
On supported Dell monitors, the **Easy Arrange** tab enables you to easily arrange the open windows in one of the predefined layouts by dragging them in the zones. Press “>” or use Page Up/Page Down key to find more layouts. To create a custom layout, arrange the open windows and then click **Save**.

To get started with **Easy Arrange**, choose a target monitor and select one of the predefined layouts. The regions for that layout are displayed momentarily on the monitor. Next, drag an open window across the monitor. While the window is being dragged, the current window layout is displayed and an active region gets highlighted as the window passes over it. At any time, drop the window into the active region to place the window in that region.

E2722H

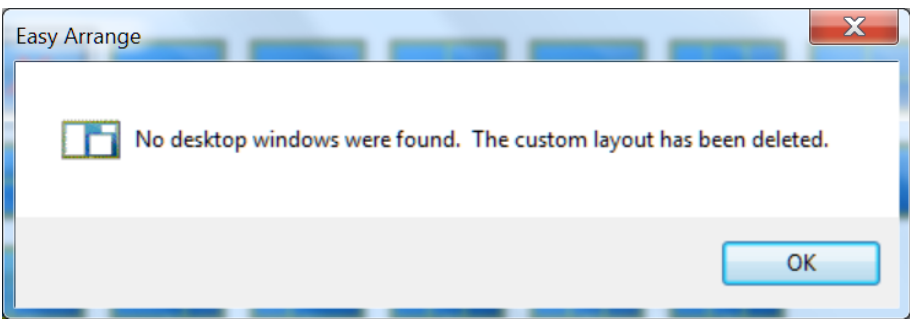


E2722HS



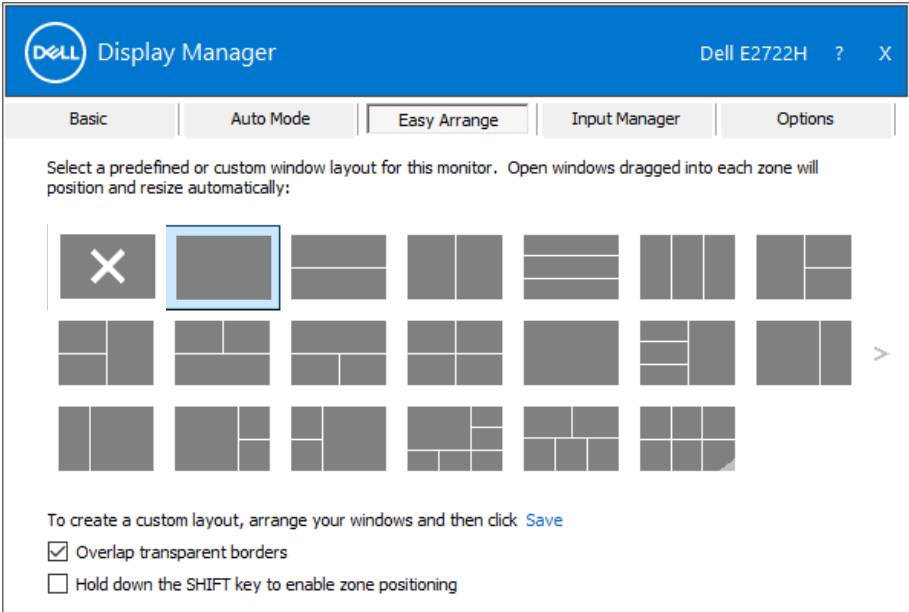
To create a custom window layout, size and position the windows (maximum 10) on the desktop and then click the Save link in **Easy Arrange**. The size and position of the windows is saved as a custom layout and the custom layout icon is created.

NOTE: This option does not save or remember the applications that are open. Only the size and position of the windows is saved.



To use the custom layout, select the custom layout icon. To delete the currently saved custom layout, close all windows on the desktop and then click the Save link in **Easy Arrange**.

E2722H



Dell Display Manager Dell E2722H ? X

Basic Auto Mode Easy Arrange Input Manager Options

Select a predefined or custom window layout for this monitor. Open windows dragged into each zone will position and resize automatically:

To create a custom layout, arrange your windows and then click [Save](#)

- Overlap transparent borders
- Hold down the SHIFT key to enable zone positioning



E2722HS

The screenshot shows the Dell Display Manager application window for a Dell E2722HS monitor. The interface has a blue header with the Dell logo and the text "Display Manager". On the right side of the header, it says "Dell E2722HS" followed by a question mark and a close button (X). Below the header is a navigation bar with five tabs: "Basic", "Auto Mode", "Easy Arrange" (which is selected), "Input Manager", and "Options".

Below the navigation bar, there is a text instruction: "Select a predefined or custom window layout for this monitor. Open windows dragged into each zone will position and resize automatically:". Below this instruction is a grid of 24 window layout icons. The first icon in the top-left corner is a square with a white 'X' on a dark background. The second icon in the top row is highlighted with a blue border. The other icons show various arrangements of rectangular zones representing window positions. A vertical scroll bar is visible on the right side of the grid.

Below the grid, there is a text instruction: "To create a custom layout, arrange your windows and then click [Save](#)". Below this are two checkboxes:

- Overlap transparent borders
- Hold down the SHIFT key to enable zone positioning



There are other advanced ways for the usage of Easy Arrange. Please refer to following table.

Feature	Function	Description
Enhanced Easy Arrange	Custom layouts	Save and name 5 customized Easy Arrange patterns. Configure x*y patterns.
	5 MRU (most-recently-used) layouts	Press Ctrl+Shift+Home to cycle among the last 5 MRU layouts.
	On the fly partition resizing	Hold down Ctrl while resizing current Easy Arrange layout to adjust the size and numbers of cells in a layout. Newly formed Easy Arrange pattern is saved into the Easy Arrange icon position. Hold down Ctrl while clicking on a modified layout icon to restore it to default layout.
	Easy Arrange layouts for portrait mode	Portrait mode Easy Arrange icons are presented when monitor is rotated.

 **NOTE: An application may require a minimum effective resolution for its application window. Such application may not fit in an Easy Arrange zone if the zone is smaller than the required window size.**



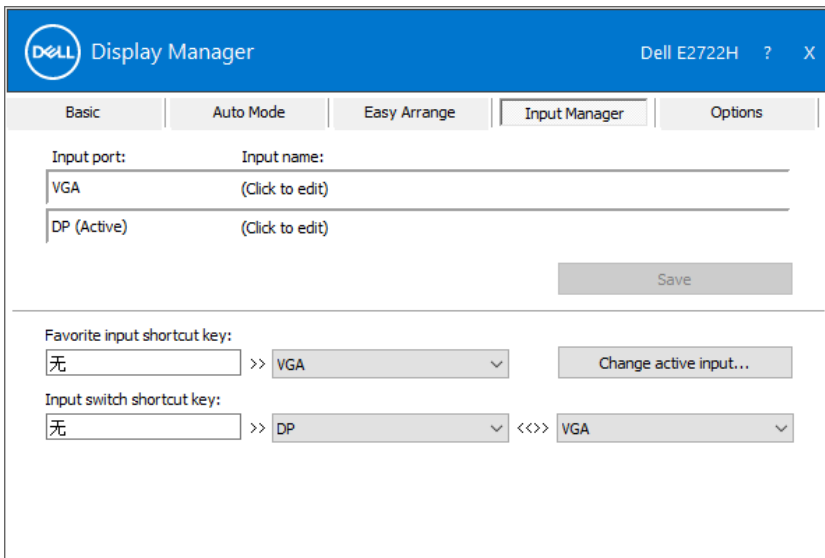
Managing Multiple Video Inputs

The **Input Manager** tab provides convenient ways for you to manage multiple video inputs connected to your Dell monitor. It makes it very easy to switch between inputs while you work with multiple computers.

All video input ports available to your monitor are listed. You can give each input a name as you like. Please save your changes after editing.

You can define a shortcut key to quickly switch to your favorite input and another shortcut key to quickly switch between two inputs if you often work between them.


E2722H



E2722HS

The screenshot shows the Dell Display Manager software window for a Dell E2722HS monitor. The window has a blue header with the Dell logo and the text 'Display Manager' on the left, and 'Dell E2722HS ? X' on the right. Below the header are five tabs: 'Basic', 'Auto Mode', 'Easy Arrange', 'Input Manager' (which is selected), and 'Options'. The 'Input Manager' tab contains the following settings:

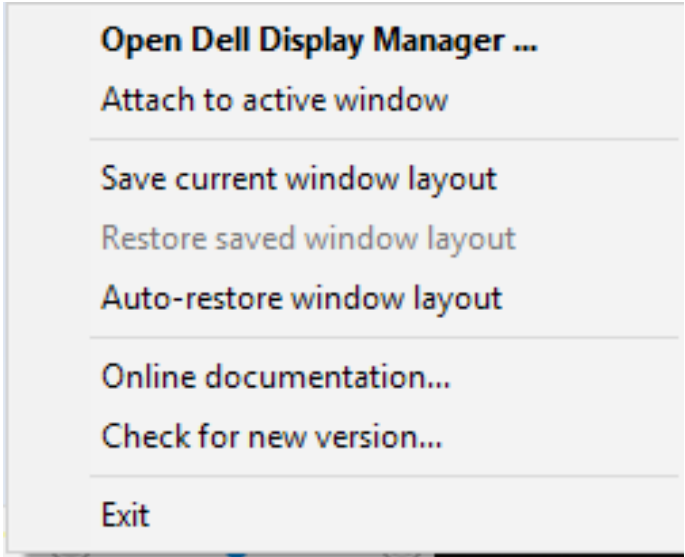
- Input port:** A list of three items: 'VGA', 'DP (Active)', and 'HDMI'. Each item has a corresponding 'Input name:' field to its right, each containing '(Click to edit)'. The 'DP (Active)' item is highlighted.
- Save:** A grey button located at the bottom right of the input port section.
- Favorite input shortcut key:** A section with a text input field containing '无', followed by '>>', a dropdown menu showing 'HDMI', and a 'Change active input...' button.
- Input switch shortcut key:** A section with a text input field containing '无', followed by '>>', a dropdown menu showing 'DP', '<<>>', another dropdown menu showing 'HDMI', and a final dropdown menu showing '无'.

 **NOTE:** DDM communicates with your monitor even when the monitor is displaying video from another computer. You can install DDM on the PC you frequently use and control input switching from it. You may also install DDM on other PCs connected to the monitor.



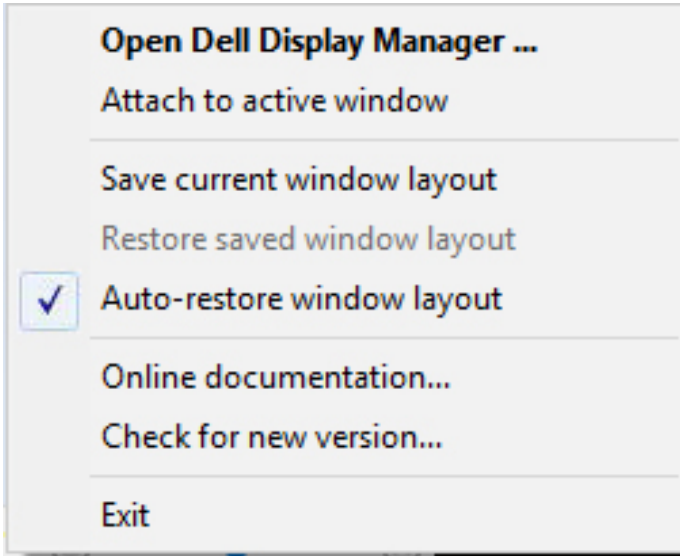
Restoring Application Positions

DDM can help you restore application windows into their positions when you reconnect your computer to the monitor(s). You can quickly access this feature by right-clicking on DDM icon in the notification tray.

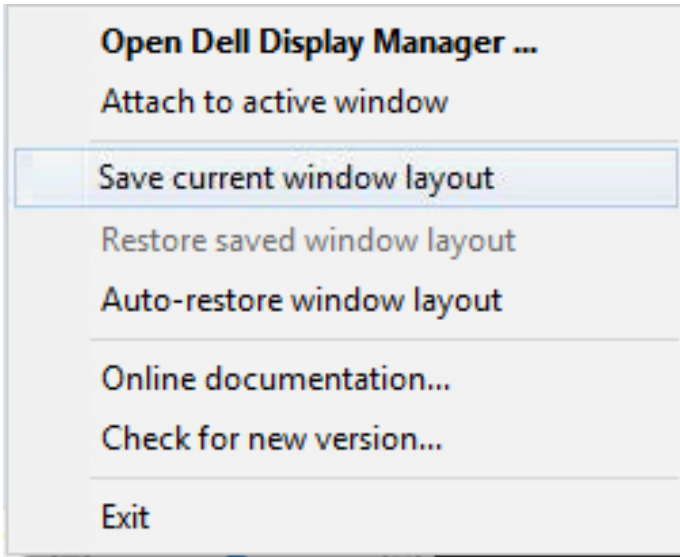


If you choose “**Auto-restore window layout**”, your application windows’ positions are tracked and remembered by DDM. DDM automatically puts the application windows into their original positions when you reconnect your PC to your monitor(s).





To go back to a favorite layout after you have moved the application windows around, first select “**Save current window layout**” and then “**Restore saved window layout**”.



You may use monitors with different models or resolutions in your daily routine, and you may apply different window layouts on them. DDM is able to know the monitor you have reconnected and restore application positions accordingly. In case you need to replace a monitor in a monitor matrix configuration, you can save the window layout before replacement and restore the layout after a new monitor is installed.

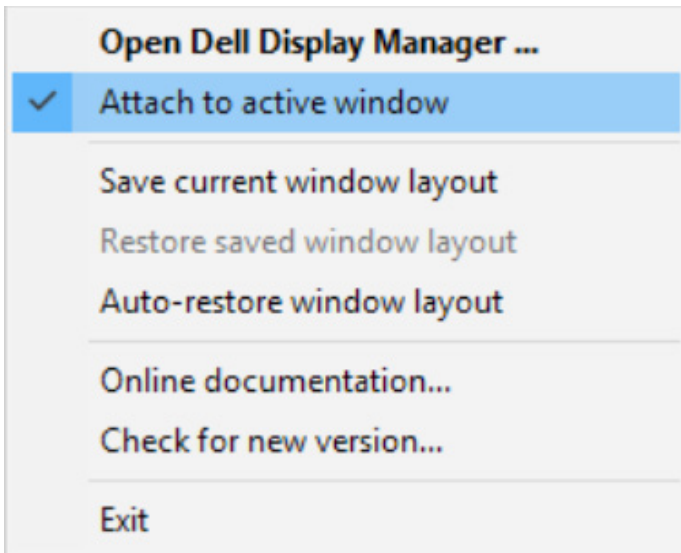
 **NOTE: You should keep your applications running in order to benefit from this feature. DDM does not launch applications.**



Attaching DDM to Active Window (Windows 10 only)

DDM icon can be attached to the active window you are working on. Click on the icon for easy access to the following features.

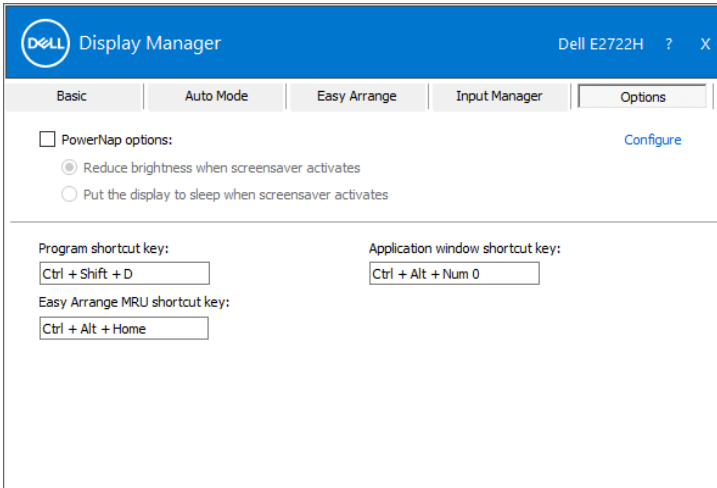
Feature	Function	Description
Attach DDM to Active Window (Windows 10 only)	Change preset or snap to different partitions	DDM icon attached to active window and user can easily switch window position, change color preset mode, and associate auto preset mode.
	Trigger shortcut key	On a running app window, press Ctrl+Shift+Ins also triggers the attached DDM menu.
	Move app window among Easy Arrange cells	Send the app window to the previous/next Easy Arrange cell.
	Move app window among monitors	Send the app window to the previous/next monitor.



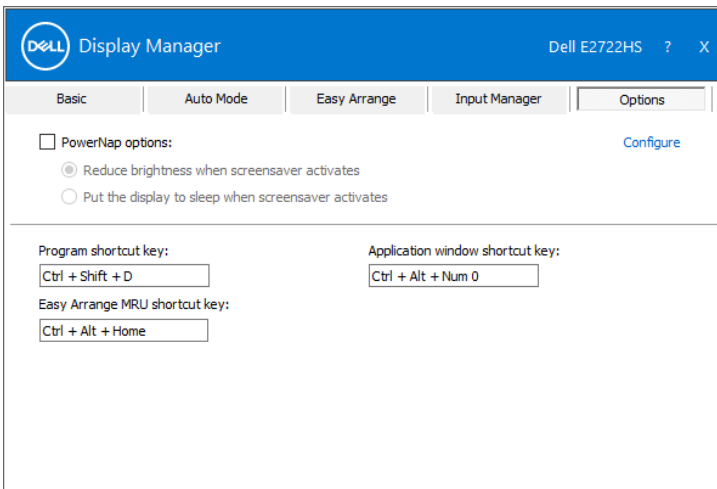
Applying Energy Conservation Features

On supported Dell models, the **Options** tab provides PowerNap energy conservation options. You can choose to set the monitor's brightness to the minimum level, or to put the monitor to sleep when the screensaver is activated.

E2722H



E2722HS

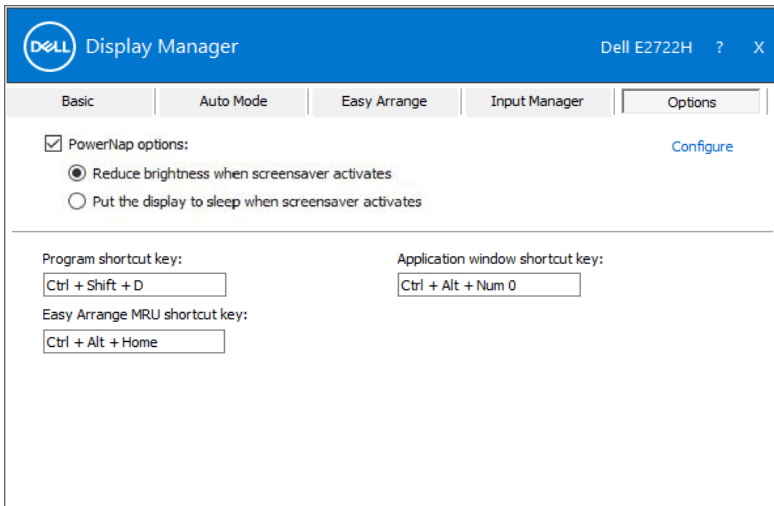


Other Shortcut Keys

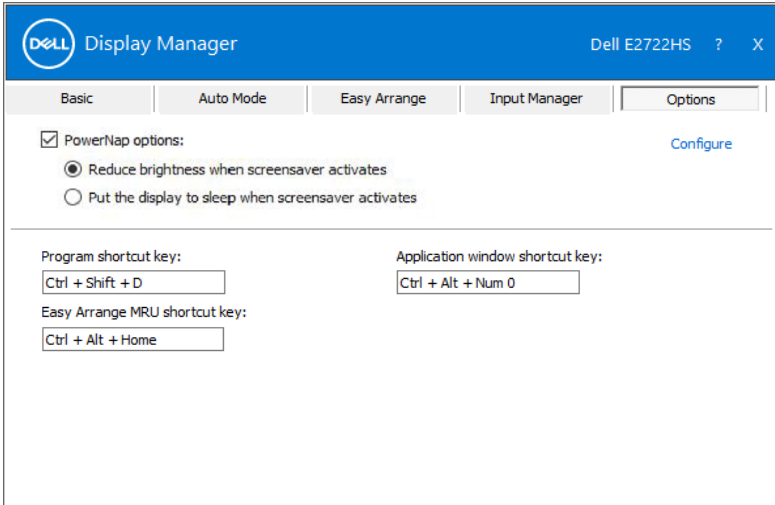
You can define a shortcut key to quickly switch to your favorite input and another shortcut key to quickly switch between two inputs if you often work between them.

- **Program shortcut key:** to quickly open the **Quick Settings** dialog box.
- **Easy Arrange MRU shortcut key:** to quickly apply the 5 recently used window layouts.
- **Application window shortcut key:** to launch a quick menu for options under **Auto Mode** and **Easy Arrange**.

E2722H

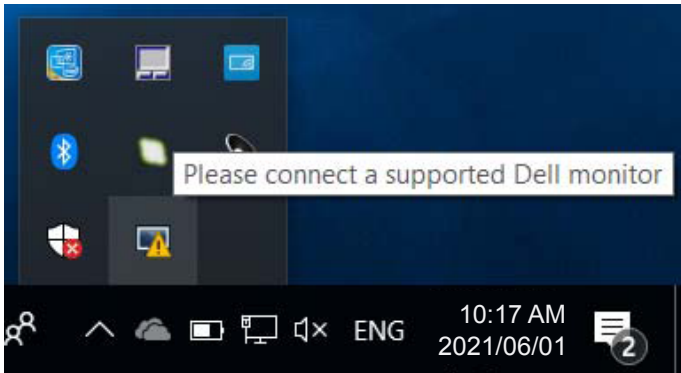


E2722HS

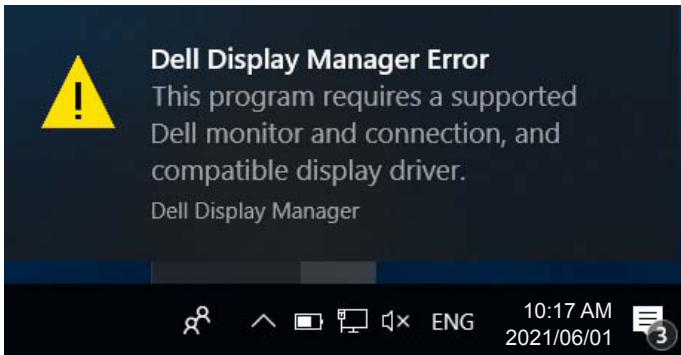


Troubleshooting

If DDM cannot work with your monitor, DDM will show the following icon in your notification tray.



Click on the icon, **DDM** shows a more detailed error message.



Please note that DDM only works with Dell-branded monitors. If you are using monitors from other manufacturers, DDM does not support them.

If DDM is unable to detect and/or communicate with a supported Dell monitor, please take the following steps to troubleshoot:

1. Make sure the video cable is properly connected to your monitor and your PC, especially the connectors should be firmly inserted into position.
2. Check the monitor OSD to ensure DDC/CI is enabled.
3. Make sure you have the correct and latest display driver from the graphics vendor (Intel, AMD, NVidia, etc.). Display driver is often the cause of DDM failure.



4. Remove any docking stations or cable extenders or converters between the monitor and the graphics port. Some low-cost extenders, hubs or converters may not support DDC/CI properly and can fail DDM. Update the driver of such device if the latest version is available.
5. Restart your system.

DDM may not work with the following monitors:

- Dell monitor models earlier than year 2013 and D-series of Dell monitors. Refer to Dell Product Support websites for more information
- Gaming monitors using Nvidia-based G-sync technology
- Virtual and wireless displays do not support DDC/CI
- Some early models of DP 1.2 monitors; it may be necessary to disable MST/DP 1.2 using the monitor OSD

If your PC is connected to the Internet, you will be prompted with a message when a newer version of DDM application is available. It is recommended to download and install the latest DDM application.

You may also check for new version by right clicking on DDM icon while pressing and holding Shift key.

