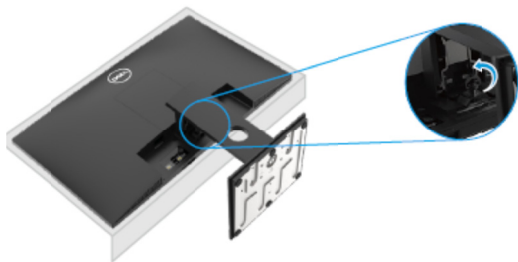


1. Disassembly Procedures

S1 Turn off the monitor.

S2 Place the monitor on a soft cloth along the desk.

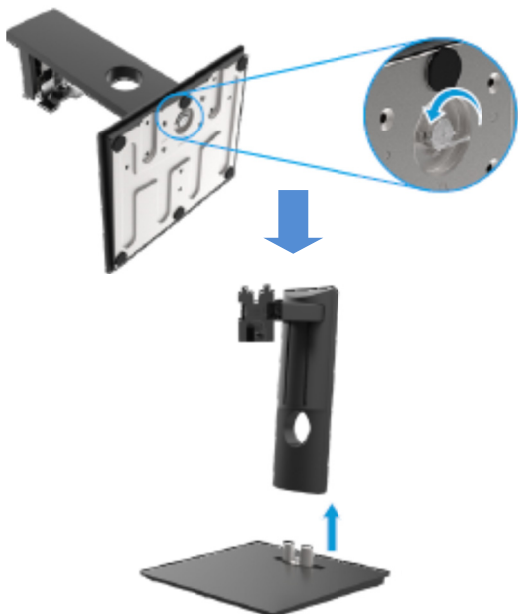
Unscrew thumbscrew at the tilt bracket fully.



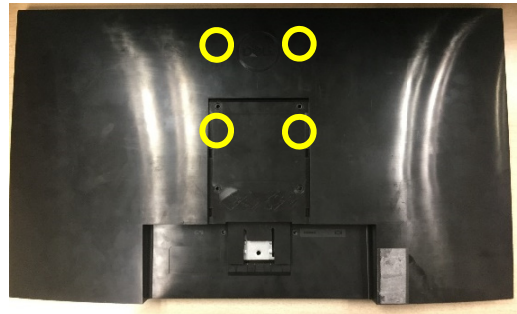
S3 Slide the stand out of the monitor completely.



S4 Loosen the stand base thumbscrew fully to remove the base from the riser.

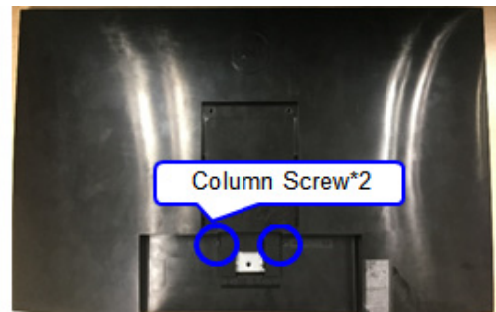


S5 Unlock 4 screws on Rear Cover



(Screw Torque: 8~10kgf)

S6 Unlock 2 CLMN screws

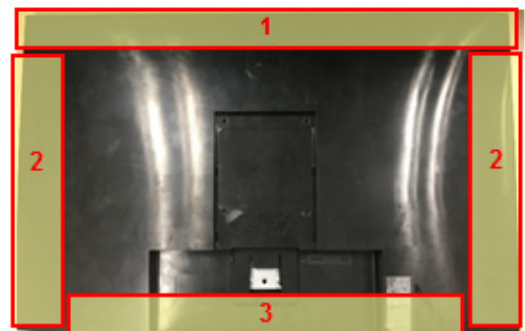


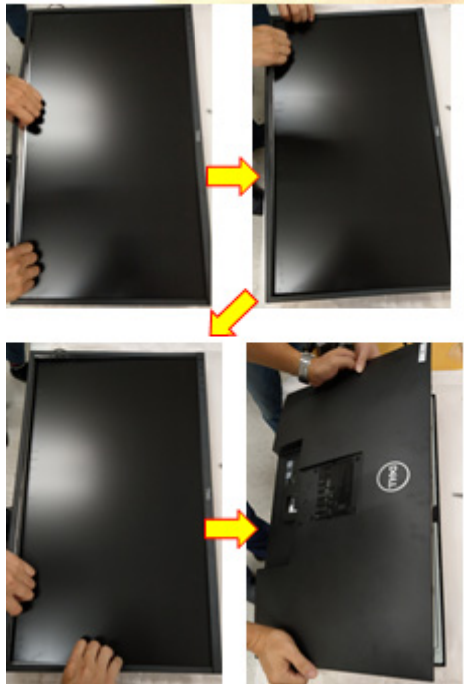
(Screw Torque: 4.5±0.5kgf)

S7 Disassemble Rear Cover from the monitor

Notice the disassembly order :

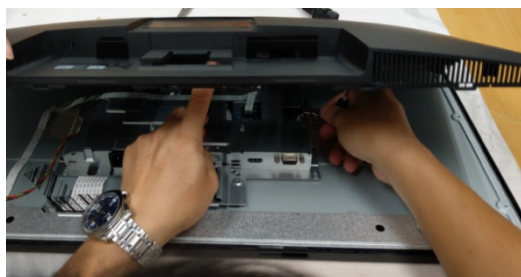
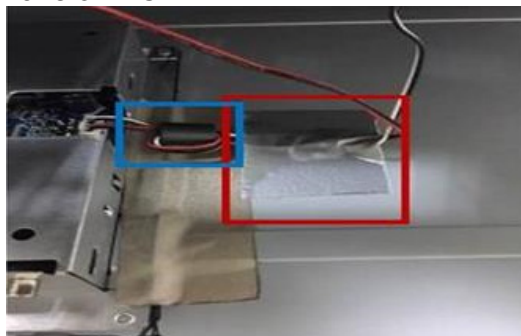
- 1) Disassemble the Top part
- 2) Disassemble the Left / Right part
- 3) Disassemble the Bottom part
- 4) Separate RC from Bezel



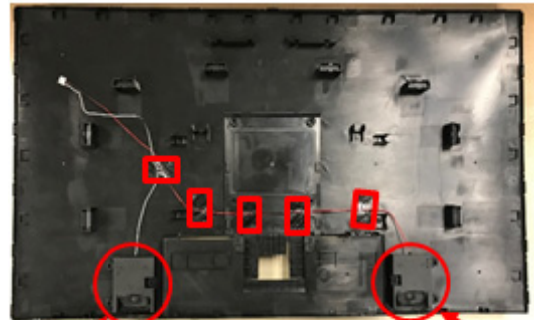


S8 Tear off 1 tape from speaker wire and panel

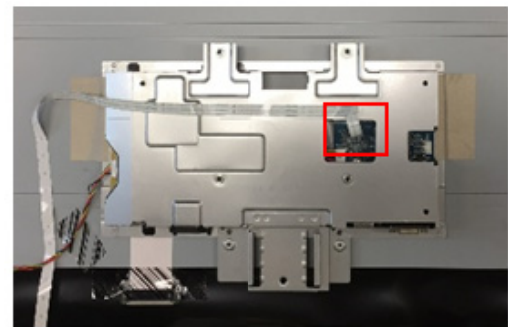
Remove Speaker Wire from I/F BD
Take off RC



S9 Remove speaker wire from I/F BD
Remove 5 tapes from speaker wire
Disassemble Speaker from Rear Cover



S10 Remove Control BD FFC cable from I/F BD

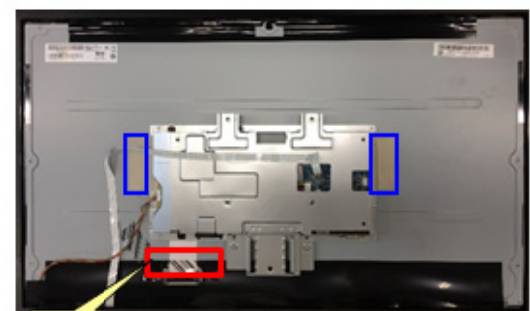


S11 Remove 2 tapes from LVDS cable and backlight wire

Remove LVDS cable from panel

Remove backlight wire from panel and SPS BD

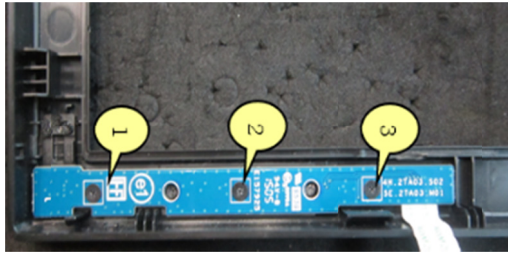
Remove 2 tape from Main SHD and panel



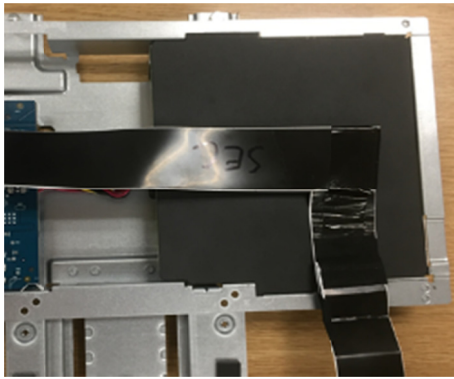
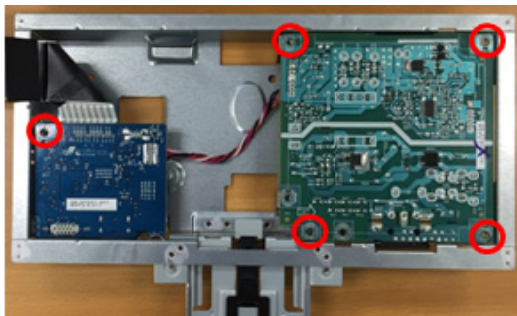
Black Tape

S12 Disassemble Bezel from the panel

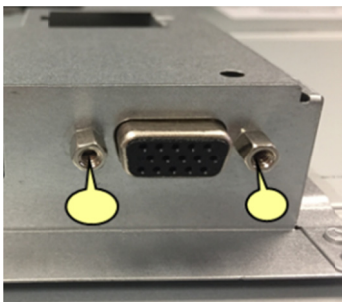
Unlock 3 screws on Control BD to take off Control BD from Bezel



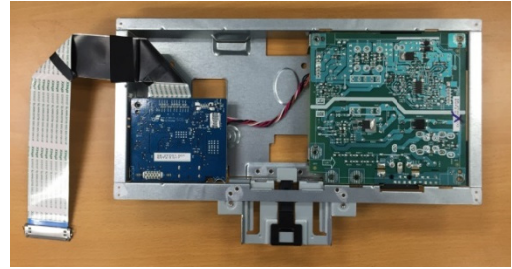
(Screw Torque: 0.9~1kgf)

S13 Disassemble Mylar from Main SHD**S14** Unlock 5 PCBA screws and 2 hex screws

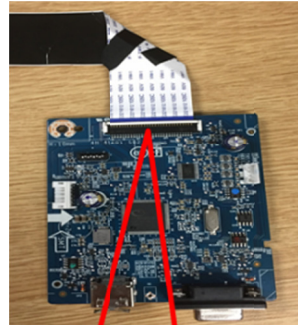
(Screw Torque: 6.5±1.0kgf)



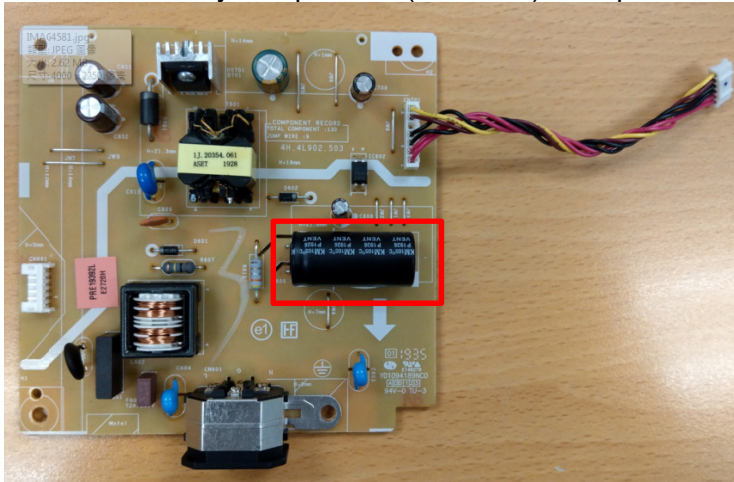
(Screw Torque: 5.0±0.6kgf)

S15 Disassemble SPS BD and I/F BD from Main SHD**S16** Remove SPS wire from I/F BD

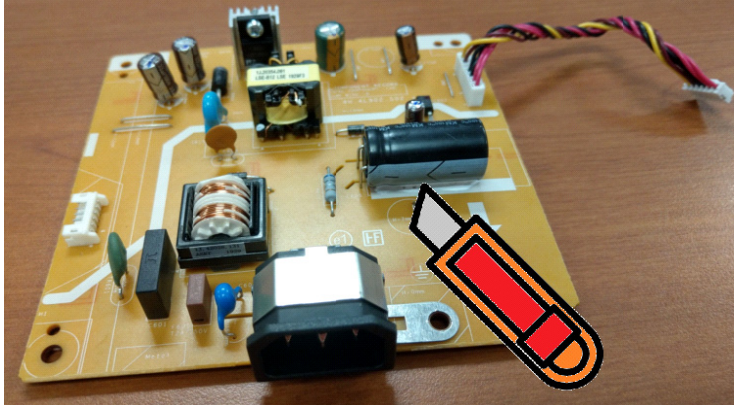
Remove LVDS cable from I/F BD



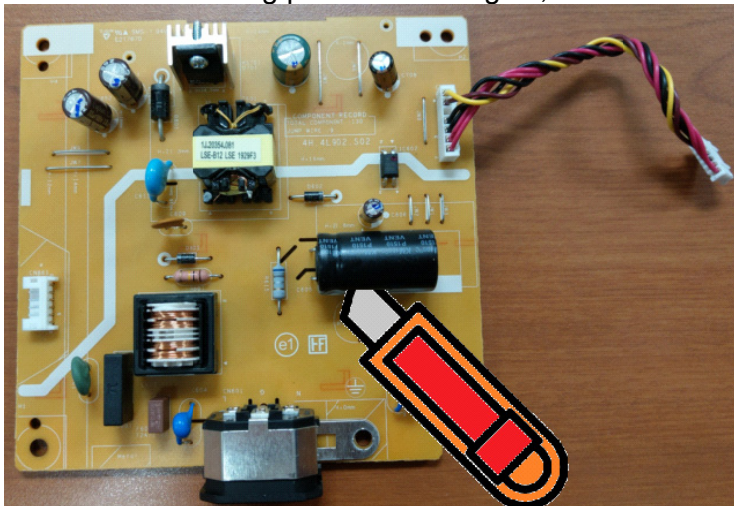
S17 Remove electrolyte capacitors (red mark) from printed circuit boards



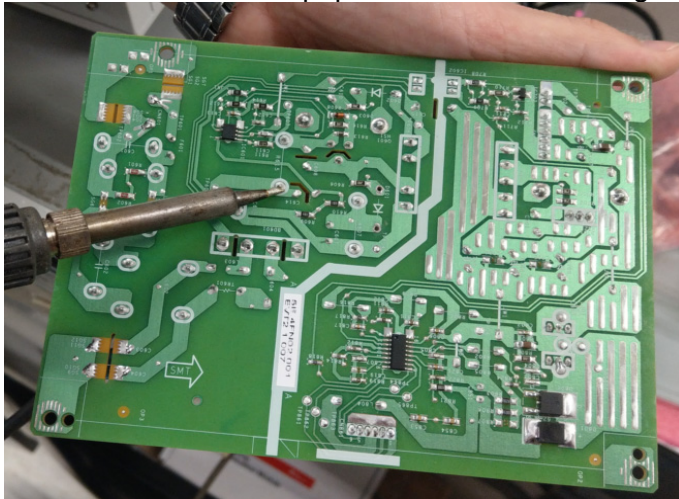
S17-1 Cut the glue between bulk cap. and PCB with a knife



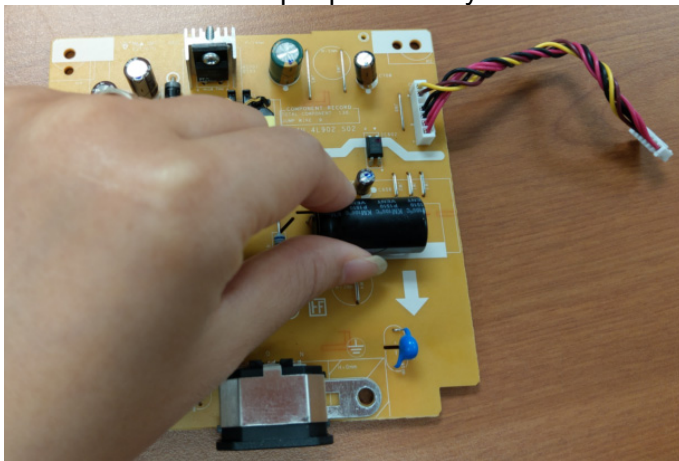
S17-2 Ensure cutting path within the glue, don't touch bulk cap. or PCB



S17-3 Take out bulk cap. pin solder with soldering iron and absorber



S17-4 Lift the bulk cap. up and away from the PCB



2. Product material information

The following substances, preparations, or components should be disposed of or recovered separately from other WEEE in compliance with Article 4 of EU Council Directive 75/442/EEC.

Capacitors / condensers (containing PCB/PCT)	No used
Mercury containing components	No used
Batteries	No used
Printed circuit boards (with a surface greater than 10 square cm)	Product has printed circuit boards (with a surface greater than 10 square cm)
Component contain toner, ink and liquids	No used
Plastic containing BFR	No used
Component and waste contain asbestos	No used
CRT	No used
Component contain CFC, HCFC, HFC and HC	No used
Gas discharge lamps	No used
LCD display > 100 cm ²	Product has an LCD greater than 100 cm ²
External electric cable	Product has external cables
Component contain refractory ceramic fibers	No used
Component contain radio-active substances	No used
Electrolyte capacitors (height > 25mm, diameter > 25mm)	Product has electrolyte capacitors (height >25mm, diameter > 25mm)

3. Tools Required

List the type and size of the tools that would typically can be used to disassemble the product to a point where components and materials requiring selective treatment can be removed.

Tool Description:

- Screwdriver
- Scraper Bar
- Penknife
- Soldering iron and absorber