

Service  
Service  
Service



# Service Manual

HorizontalFrequency  
30kHzto83kHz

## SAFETYNOTICE

CAUTION: USEASEPARATEISOLATIONTRANSFOMERFORTHIS UNITWHENSERVICING

ANYPersonATTEMPTINGTOSERVICETHISCHASSISMUSTFAMILIARIZEHIMSELFWITHTHECHASSSAND BEAWAREOFTHENECESSARYSAFETYPRECAUTIONSTOBEUSEDWHENSERVICINGELECTRONICEQUIPME NTCONTAINING HIGH VOLTAGES.

## Important Safety Notice

Proper service and repair is important to the safe, reliable operation of all DELL Company Equipment. These service procedures recommended by DELL and described in this service manual are effective methods of performing service operations. Some of these service operations require the use of tools specially designed for the purpose. The special tools should be used when and as recommended.

It is important to note that this manual contains various CAUTIONS and NOTICES which should be carefully read in order to minimize the risk of personal injury to service personnel. The possibility exists that improper service methods may damage the equipment. It is also important to understand that these CAUTIONS and NOTICES ARE NOT EXHAUSTIVE. DELL could not possibly know, evaluate and advise the service trade of all conceivable ways in which service might be done or of the possible hazardous consequences of each way.

Consequently, DELL has not undertaken any such broad evaluation. Accordingly, a service person who uses a service procedure or tool which is not recommended by DELL must first satisfy himself thoroughly that neither his safety nor the safe operation of the equipment will be jeopardized by the service method selected.

Hereafter throughout this manual, DELL Company will be referred to as DELL.

### WARNING

Use of substitute replacement parts, which do not have the same, specified safety characteristics may create shock, fire, or other hazards.

Under no circumstances should the original design be modified or altered without written permission from DELL. DELL assumes no liability, express or implied, arising out of any unauthorized modification of design.

Service person assumes all liability.

### FOR PRODUCTS CONTAINING LASER:

DANGER-Invisible laser radiation when open. AVOID DIRECT EXPOSURE TO BEAM.

CAUTION-Use of controls or adjustments or performance of procedures other than those specified herein may result in hazardous radiation exposure.

CAUTION-The use of optical instruments with this product will increase eye hazard.

### TO ENSURE THE CONTINUED

RELIABILITY OF THIS PRODUCT, USE ONLY ORIGINAL MANUFACTURER'S REPLACEMENT PARTS, WHICH ARE LISTED WITH THEIR PART NUMBERS IN THE PARTS LIST SECTION OF THIS SERVICE MANUAL.

Take care during handling the LCD module with backlight unit

- Must mount the module using mounting holes arranged in four corners.
- Do not press on the panel, edge of the frame strongly or electric shock as this will result in damage to the screen.
- Do not scratch or press on the panel with any sharp objects, such as a pencil or pen as this may result in damage to the panel.
- Protect the module from the ESD as it may damage the electronic circuit (C-MOS).
- Make certain that treatment person's body is grounded through wristband.
- Do not leave the module in high temperature and in areas of high humidity for a long time.
- Avoid contact with water as it may cause a short circuit within the module.
- If the surface of panel becomes dirty, please wipe it off with a soft material. (Cleaning with a dirty or rough cloth may damage the panel.)

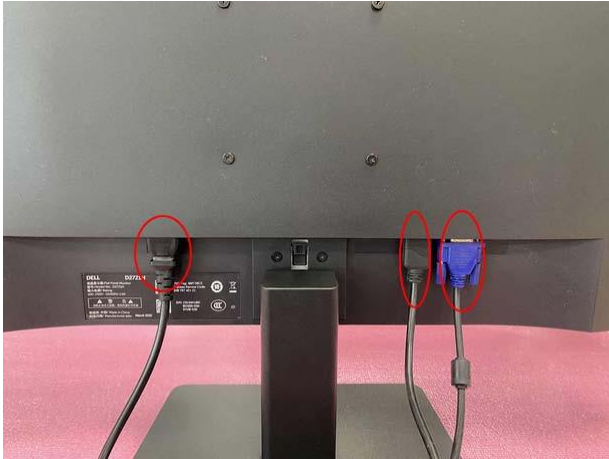
# 1. Mechanical Instruction

DELL D2721H 1

1 Disassembly Procedures:

S1 Turn off power

S2 Unplug external cables from product



S3 Use a Philips- head screwdriver to remove 6 screws for unlocking mechanisms.  
(No.1-4 screw size=M4x10; Torque=7.5-8.5kgfxcmm  
No.5-6 screw size=M4x5; Torque=5-6kgfxcmm.)



S4 Use your finger to push the button , then pull out the stand .



S5 Use a Philips- head screwdriver to remove 1screw for unlocking mechanisms.  
(Screw size=M3x6; Torque=4.5-6.5 kgfxcmm)



S6 Wedge your fingers(or plastic picks ) between the rear cover and the middle bezel on the corners of the bottom side of the monitor to release the rear cover, then pull up carefully the rear cover in order of arrow preference for unlocking mechanisms of rear cover.



S7 Put it on a protective cushion and remove the rear cover.



S8 Use a Philips-head screwdriver to remove 17 screws for unlocking mechanisms.  
(No.1-15 screw size=M3x4; Torque=4.5-6.5kgfxcmm  
No.16-17 screw size=M3x3; Torque=4.5-6.5kgfxcmm.)

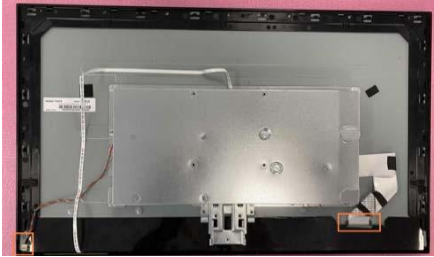


S9

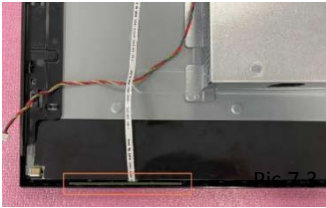
Tear off 2 pieces tapes and 3 pieces aluminum foil (pic.7.1)  
 Disconnect the backlight cable and LVDS cable from the connectors of panel (pic.7.2).  
 Take off the key board from the bezel, then disconnect the cable from the key board (pic.7.3).



Pic.7.1



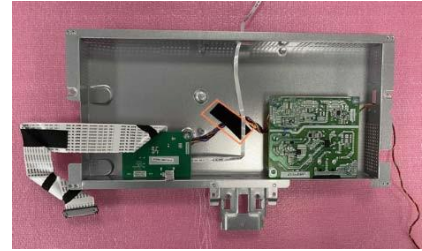
Pic.7.2



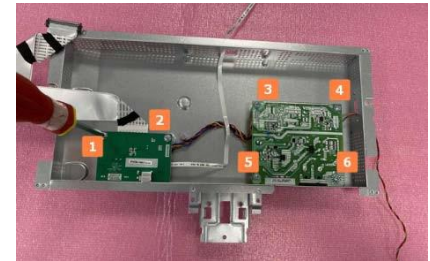
Pic.7.3

S11

Tear off the tape (Pic.10.1).  
 Use a Philips- head/hexagon screwdriver to remove 7 screws and 2 hexagon screw for unlocking the main board and power board (Pic.10.2 and 3).  
 Please make sure screw driver not touch with components on board)  
 (No.1-5+7 screw size=M3x6; Torque=4.5-6.5 kgfxcm  
 No.8-9 screw size=H4.7x5 (Hexagon screw); Torque=4-5kgfxcm



Pic.10.1



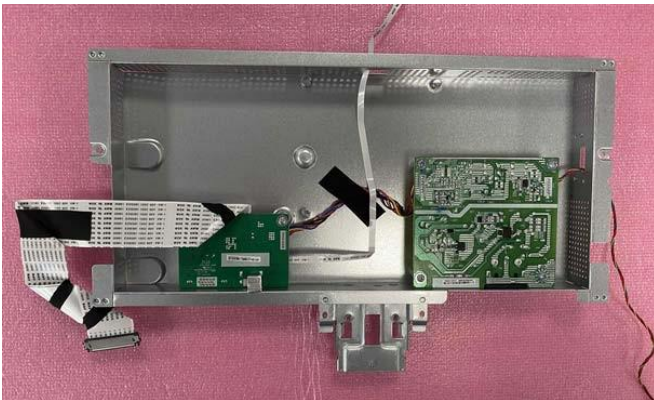
Pic.10.2



Pic.10.3

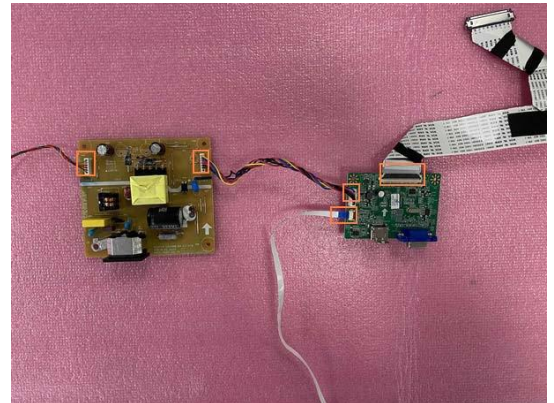
S10

Lift up the bracket chassis module and put it on a protector cushion. Please pay attention to ESD protection (wear ESD ring and so on).



S12

Take off the PCB from the shielding cover and put in on a protector cushion.  
 Then disconnect cables from the main board and the power board.



S13

Lift up the top side of the bezel, then pull down to take off the bezel.

