

Service
Service
Service



Service Manual

HorizontalFrequency
30kHzto83kHz

SAFETYNOTICE

CAUTION: USEASEPARATEISOLATIONTRANSFOMERFORTHIS UNITWHENSERVICING

ANYPersonATTEMPTINGTOSERVICETHISCHASSISMUSTFAMILIARIZEHIMSELFWITHTHECHASSISAND BEAWAREOFTHENECESSARYSAFETYPRECAUTIONSTOBEUSEDWHENSERVICINGELECTRONICEQUIPME NTCONTAINING HIGH VOLTAGES.

Mechanical Instruction

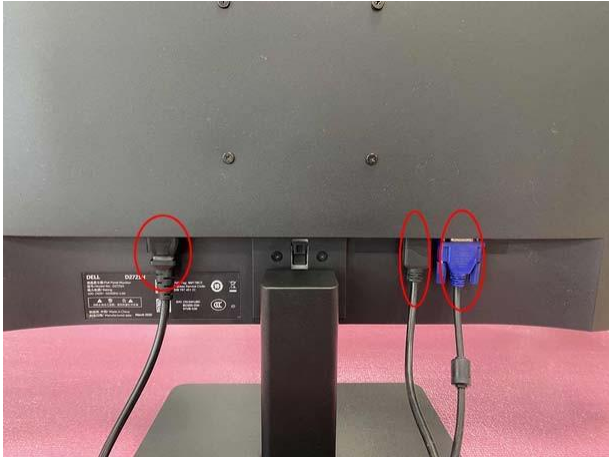
DELL D2721H

1

1 Disassembly Procedures:

S1 Turn off power

S2 Unplug external cables from product



S3 Use a Philips- head screwdriver to remove 6 screws for unlocking mechanisms.
(No.1-4 screw size=M4x10; Torque=7.5-8.5kgfxcmm
No.5-6 screw size=M4x5; Torque=5-6kgfxcmm.)



S4 Use your finger to push the button , then pull out the stand .



S5 Use a Philips- head screwdriver to remove 1screw for unlocking mechanisms.
(Screw size=M3x6; Torque=4.5-6.5 kgfxcmm)



S6 Wedge your fingers(or plastic picks) between the rear cover and the middle bezel on the corners of the bottom side of the monitor to release the rear cover, then pull up carefully the rear cover in order of arrow preference for unlocking mechanisms of rear cover.



S7 Put it on a protective cushion and remove the rear cover.



S8 Use a Philips-head screwdriver to remove 17 screws for unlocking mechanisms.
(No.1-15 screw size=M3x4; Torque=4.5-6.5kgfxcmm
No.16-17 screw size=M3x3; Torque=4.5-6.5kgfxcmm.)



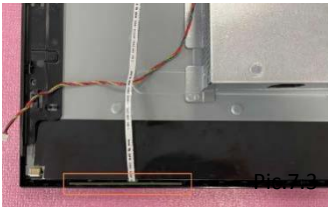
- S9** Tear off 2 pieces tapes and 3 pieces aluminum foil (pic.7.1)
Disconnect the backlight cable and LVDS cable from the connectors of panel (pic.7.2).
Take off the key board from the bezel, then disconnect the cable from the key board (pic.7.3).



Pic.7.1



Pic.7.2

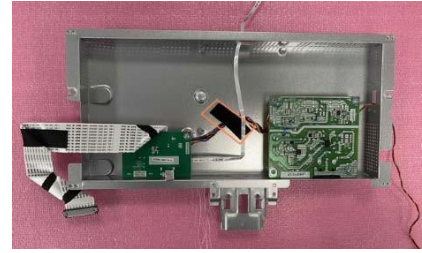


Pic.7.3

- S10** Lift up the bracket chassis module and put it on a protector cushion. Please pay attention to ESD protection (wear ESD ring and so on).



- S11** Tear off the tape (Pic.10.1).
Use a Philips- head/hexagon screwdriver to remove 7 screws and 2 hexagon screw for unlocking the main board and power board (Pic.10.2 and 3).
Please make sure screw driver not touch with components on board)
(No.1-5+7 screw size=M3x6; Torque=4.5-6.5 kgfxc
No.8-9 screw size=H4.7x5 (Hexagon screw); Torque=4-5kgfxc



Pic.10.1

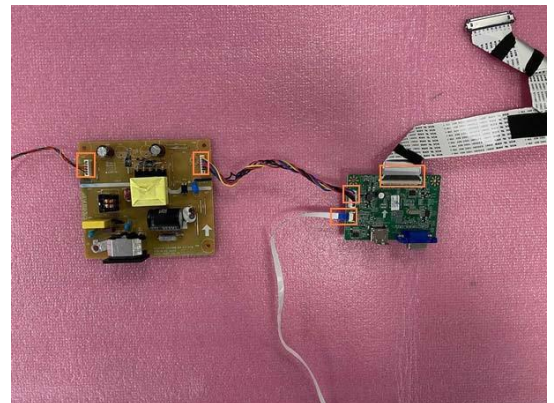


Pic.10.2



Pic.10.3

- S12** Take off the PCB from the shielding cover and put in on a protector cushion.
Then disconnect cables from the main board and the power board.



S13

Lift up the top side of the bezel, then pull down to take off the bezel.

