

Service
Service
Service



Service Manual

SAFETYNOTICE

ANYPersonATTEMPTINGTOSERVICETHISCHASSISMUSTFAMILIARIZEHIMSELFWITHTHECHASSISAND BEAWAREOFTHENECESSARYSAFETYPRECAUTIONSTOBEUSEDWHENSERVICINGELECTRONICEQUIPMENTCONTAINING HIGH VOLTAGES.

CAUTION: USEASEPARATEISOLATIONTRANSFORMERFOR THIS UNITWHENSERVICING

Mechanical Instruction

DELLE2420H

1

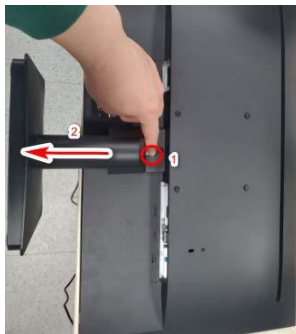
1 Disassembly Procedures:

S1 Turn off power

S2 Unplug external cables from product



S3 Remove stand from product: press the release button, then pull out the stand.



S4 use a Philips-head screwdriver to remove six screws for unlocking mechanisms.
(No.1-4 screw size=M4x10; Torque=7.5-8.5kgfxcm
No.5-6 screw size=M3x6; Torque=5-6kgfxcm.)



S5 Use plastic picks to wedge from Teardown hole, release rear cover, then pull up carefully the rear cover in order of arrow preference for unlocking mechanisms of rear cover.



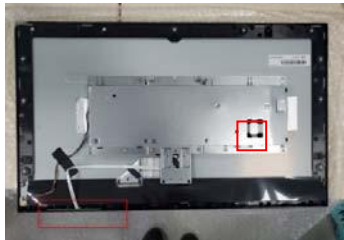
S6 Put it on a protective cushion and remove the rear cover.



S7 Tear off 2 pieces of aluminum foil (pic.7.1) Teardown the Key board from BEZEL, then disconnect the keypad cable from the connectors of the Key board(pic.7.2). Tear off 1 pieces tape, disconnect the backlight cable from the connectors of the power board and panel module(pic.7.3).



Pic.7.1

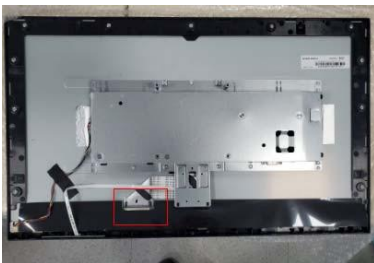


Pic.7.2



Pic.7.3

S8 disconnect the LVDS cable from the connectors of the main board and panel module.

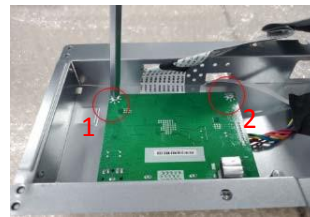


S9 Lift up the bracket chassis module and put it on a protector cushion. Please pay attention to ESD protection(wear ESD ring and so on).



S10 Turn over the bracket chassis. Use a Philips-head/hexagon screwdriver to remove 3 screws(2 bottom side and 1 interface side) and 2 hexagon screw(the interface side) for unlocking the main board (Pic.10.1). Tear off the black tape, disconnect the cable from the connectors of the main board and power board (pic.10. 3 and 4). Please make sure screw driver not touch with components on board)

(No.1-3 screw size=M3x6; Torque=4.5-6.5 kgfxcmm
No.4-5 screw size=H4.7x5(hexagon screw); Torque=4-5kgfxcmm .)



Pic.10.1



Pic.10.2

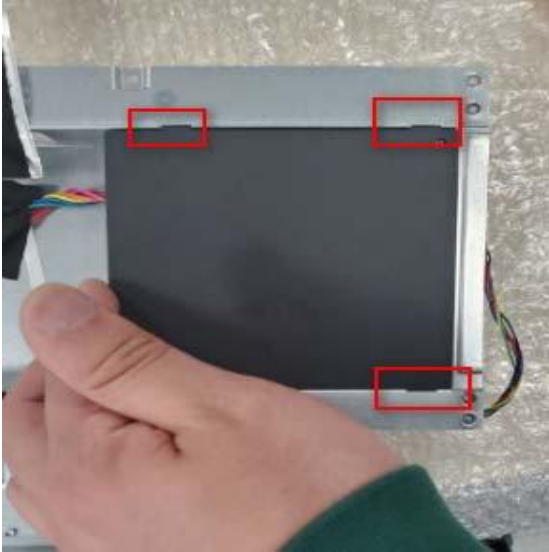


Pic.10.3



Pic.10.4

- S11 Remove the Mylar from the hooks of the bracket chassis module.



- S12 Use a Philips-head screwdriver to remove 4 screws for unlocking the power board, then remove the board from the hooks of the bracket chassis.

(No.1-3 screw size=M3x6,
Torque=4.5-6.5kgfxcn No.4 screw
size=M4x6, Torque=4.5-6.5kgfxcn)
)



- S13 Use a Philips-head screwdriver to remove 11 screws for unlocking the bezel, then remove bezel

