

Service  
Service  
Service



# Service Manual

## SAFETY NOTICE

ANY PERSON ATTEMPTING TO SERVICE THIS CHASSIS MUST FAMILIARIZE HIMSELF WITH THE CHASSIS AND BE AWARE OF THE NECESSARY SAFETY PRECAUTIONS TO BE USED WHEN SERVICING ELECTRONIC EQUIPMENT CONTAINING HIGH VOLTAGES.

CAUTION: USE A SEPARATE ISOLATION TRANSFORMER FOR THIS UNIT WHEN SERVICING

# Mechanical Instruction

DELLD2421DS 1

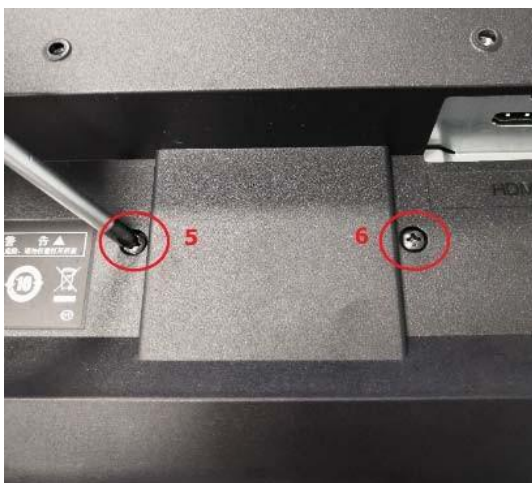
## 1 Disassembly Procedures:

S1 Turn off power

S2 Unplug external cables from product



S3 Remove stand from product: use a screwdriver to remove six screws out



(No.1-4 screw size=M4x12; Torque=7.5-8.5kgfxcm  
No.5-6 screw size=M3x6; Torque=5-6kgfxcm.)

S4 Wedge plastic picks between the rear cover and the middle bezel on the corners of the bottom side of the monitor to release the rear cover, then pull up carefully the rear cover in order of arrow preference for unlocking mechanisms of rear cover.



S5 Put it on a protective cushion and remove the rear cover.



- S6** Tear off 4 pieces of aluminum foil (pic.7.1) then disconnect the keypad cable from the connectors of the main board(pic.7.2). Tear off 2 pieces tape, disconnect the backlight cable from the connectors of the power board and panel module(pic.7.3).



Pic.7.1



Pic.7.2

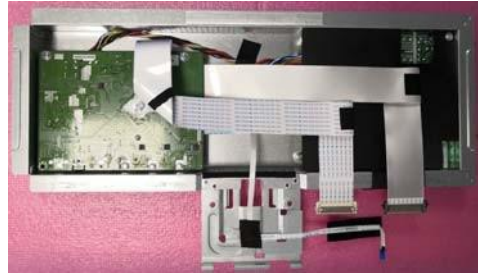


Pic.7.3

- S7** Disconnect the LVDS cable from the connectors of the main board and panel module

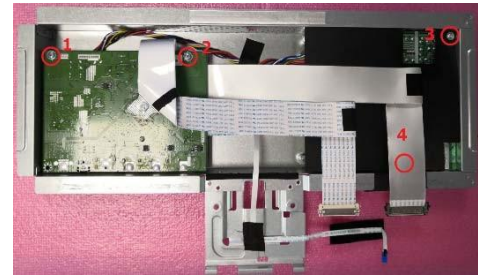


- S8** Lift up the bracket chassis module and put it on a protector cushion. Please pay attention to ESD protection(wear ESD ring and so on).

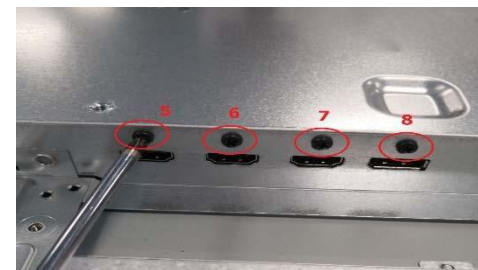


Pic.9.1

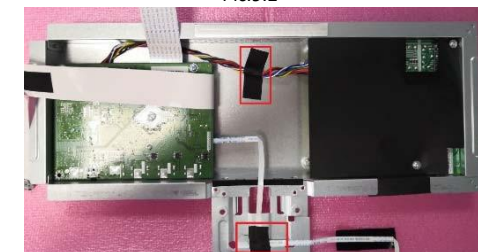
- S9** Turn over the bracket chassis. Use a screwdriver to remove 8 screws(bottom side\*4,inside\*4) (Pic.9.1&2), Tear off the black tape(Pic.9.3) (No.1-8 screw size=M3x6; Torque=4.5-6.5 kgfxcM)



Pic.9.1

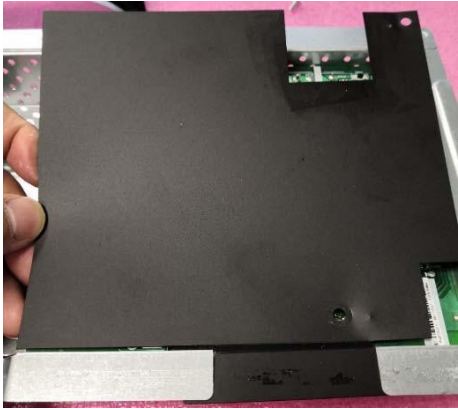


Pic.9.2



Pic.9.3

S10 Take off the mylar



S11 Use a screwdriver to remove last 2 screws for unlocking the power board, then remove the board from the hooks of the bracket chassis.

(No.1-2 screw size=M3x6, Torque=4.5-6.5kgfxcM)



S12 Use a Philips-head screwdriver to remove 9 screws for unlocking the bezel, then remove bezel

