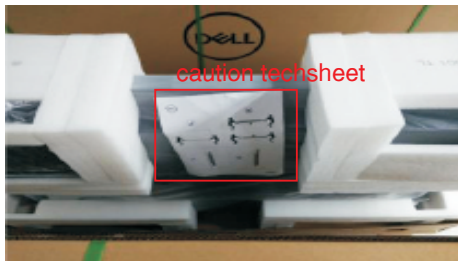
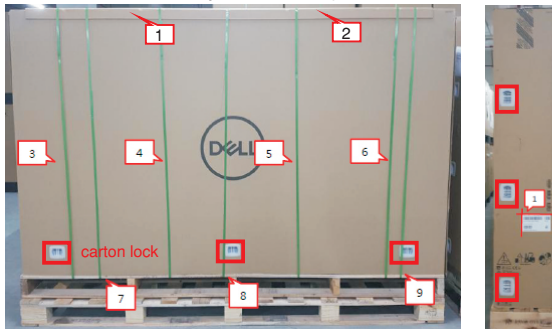


Go to contents page

1. Disassembly Procedures:

Cut off 4pcs straps first, then remove 12pcs carton locks, then use a proper tool to open the carton, and then remove the angle papers, top cartons and 2pcs paper box. Tearing off the caution techsheet. Remove EPS-Tops with PC box, QSG and accessories PE bag (CD, battery, 3pcs wire saddle, 2pcs stylus, Stylus holder, remote control, remote control holder, VGA cable, HDMI cable, DP cable and USB cables EU+USA cable and power cable).

S1



Take out the whole monitor from the EPS-bottom.

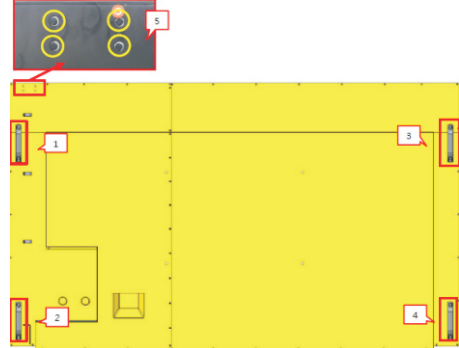
Remove the PE bag from top to bottom, and put the monitor on ESD protection foam.

S2



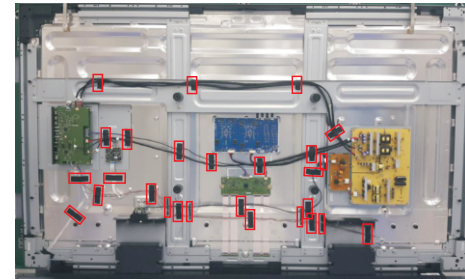
S3

Remove the 4pcs rubbers. Use a screwdriver to remove 8pcs screws for releasing the handles. (Torque: 16±1kgf). Remove 54pcs screws for unlocking 2pcs rear covers (Torque: 3.8±0.3kgf).



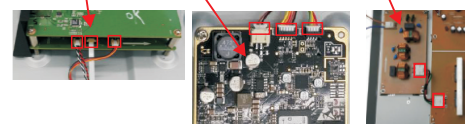
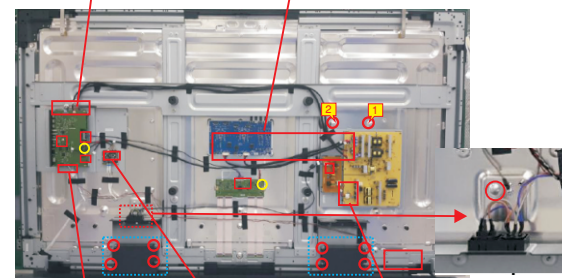
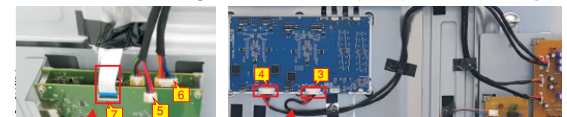
S4

Remove 27pcs black tapes for releasing the cables as the picture below shown.



Disconnect IR cable from the connectors of IR board with main board. Disconnect the speakers' cable from the connector of the main board. Disconnect function key cable from the connector of the main board. Disconnect LVDS cable from connectors of T-COB board and main board. Disconnect touch&USB cable from the connectors of touch board with USB board. Disconnect all the connector cables from the connector of the power board and AC board and main board.

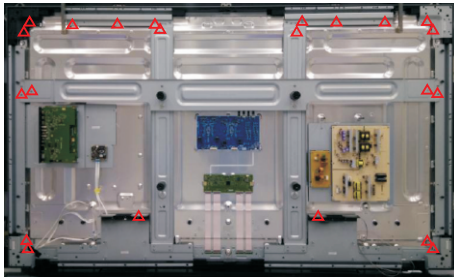
Use a screwdriver to remove 8pcs screws for unlocking the two speakers, remove 1pcs grounding screw for removing the AC outlet. (Torque: 3.8±0.3kgf)



◀◀ [Go to contents page](#)

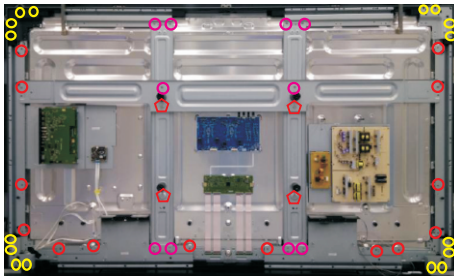
S6

Use a screwdriver to remove 20pcs screws for unlocking the irons. (Torque: 3.8±0.3kgf)



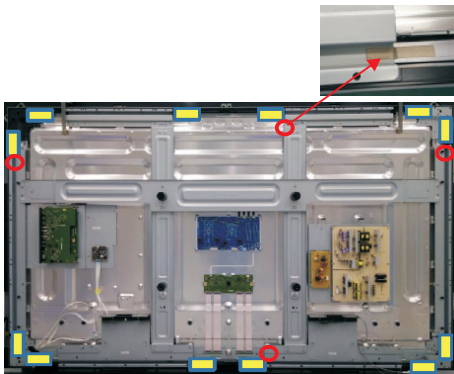
Use a screwdriver to remove 12pcs screws for unlocking the corner irons, to remove 24pcs screws for unlocking the irons. (Torque: 7±0.3kgf)
Use a screwdriver to remove 4pcs screws for unlocking the vertical irons. (Torque: 24±1kgf)

S7



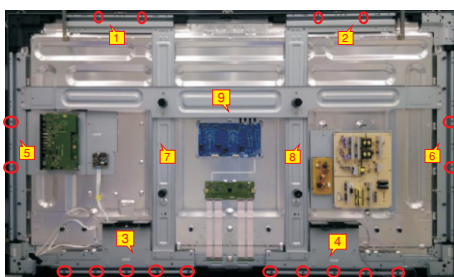
S8

Remove 12pcs rubbers (yellow color) and 4pcs conductive tapes (red color) as the picture below shown.



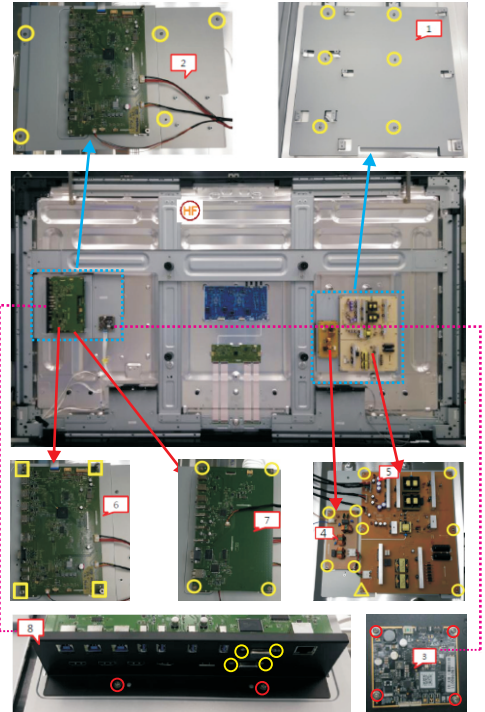
S9

Use a screwdriver to remove 18pcs screws for unlocking the top iron, left iron, right iron and speaker irons with the whole unit. (Torque: 7kgf±0.3)
Remove the top iron, left iron, right iron and speaker irons, vertical irons, horizontal iron and corner irons.



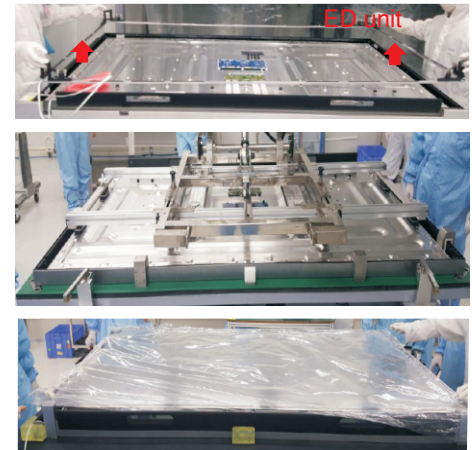
S10

Use a screwdriver to remove 39pcs(28+11) screws for unlocking main board, USB board, power board, AC boar, touch board, IO stand, connectors, power board stand and main board stand. (Torque: 3.8kgf±0.3).



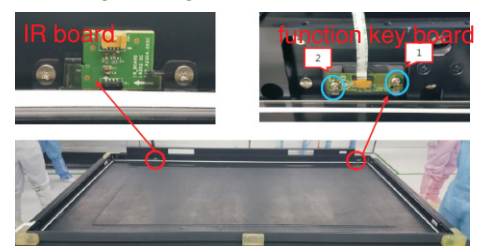
S11

Lift up the assembled ED unit. Lift up the panel module with a equipment and put it on a protective cushion. Lift up the glass with a tool and put it on a protector.



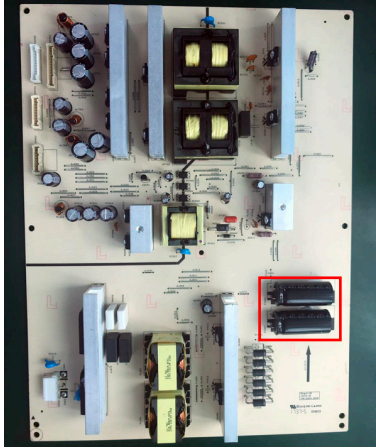
S12

Use a screwdriver to remove 2pcs screws for unlocking the function key board with lens, to remove 2pcs screws for unlocking IR board from the IR lens (Torque: 2±0.2kgf), remove 24pcs(8+16) screws for unlocking the angle irons with front frames.

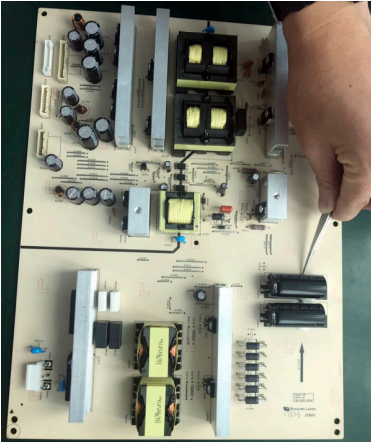


Go to contents page

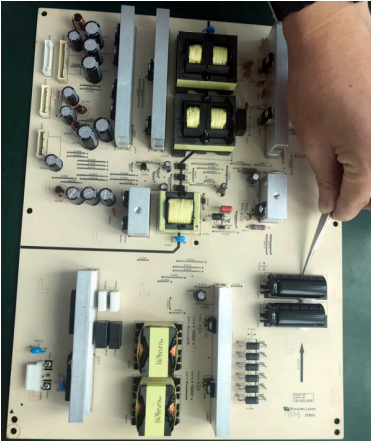
S13 Remove electrolyte capacitors (red mark) from printed circuit boards



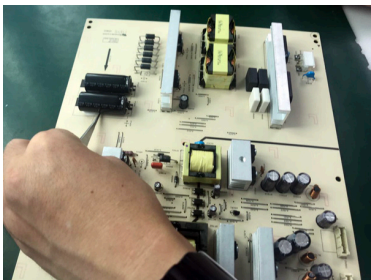
S13-1 Cut the glue between bulk cap. and PCB with a knife



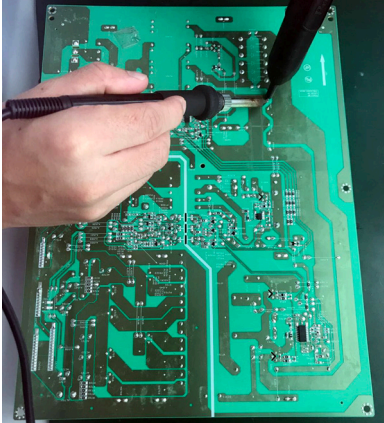
S13-2 Ensure cutting path within the glue, don't touch bulk cap. or PCB



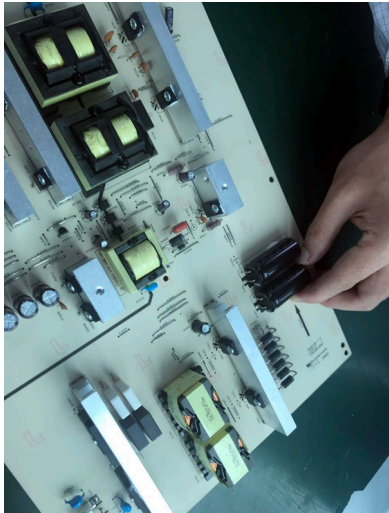
S13-3 Cut into the bottom of bulk cap. and pull it up carefully



S13-4 Take out bulk cap. pin solder with soldering iron and absorber



S13-5 Lift the bulk cap. up and away from the PCB



◀◀ [Go to contents page](#)

2. Product material information

The following substances, preparations, or components should be disposed of or recovered separately from other WEEE in compliance with Article 4 of EU Council Directive 75/442/EEC.

Capacitors / condensers (containing PCB/PCT)	No used
Mercury containing components	No used
Batteries	No used
Printed circuit boards (with a surface greater than 10 square cm)	Product has printed circuit boards (with a surface greater than 10 square cm)
Component contain toner, ink and liquids	No used
Plastic containing BFR	No used
Component and waste contain asbestos	No used
CRT	No used
Component contain CFC, HCFC, HFC and HC	No used
Gas discharge lamps	No used
LCD display > 100 cm ²	Product has an LCD greater than 100 cm ²
External electric cable	Product has external cables
Component contain refractory ceramic fibers	No used
Component contain radio-active substances	No used
Electrolyte capacitors (height > 25mm, diameter > 25mm)	Product has electrolyte capacitors (height > 25mm, diameter > 25mm)

3. Tools Required

List the type and size of the tools that would typically can be used to disassemble the product to a point where components and materials requiring selective treatment can be removed.

Tool Description:

- Screwdriver (Phillip head) #1
- Screwdriver (Phillip head) #2
- Penknife
- Soldering iron and absorber