

## DELL C7017T (C7016H is applicable- exclude RJ45)

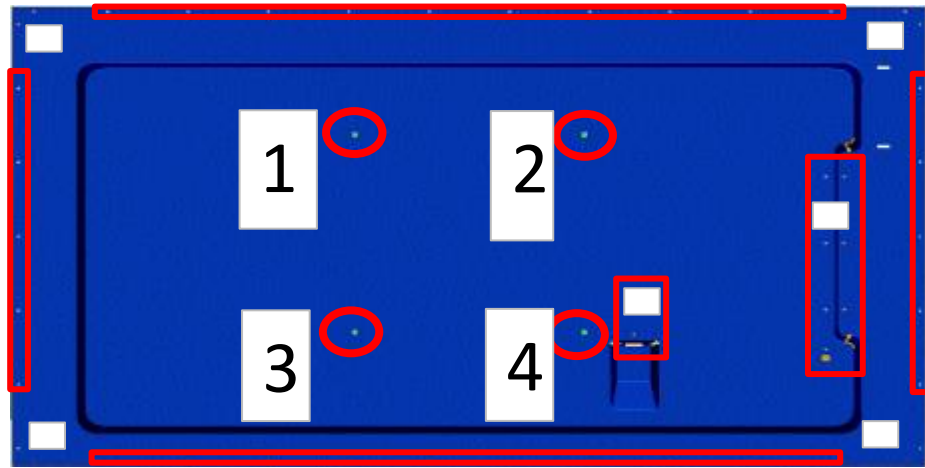
### 1. Disassemble Procedures

S1

Remove back cover screws

(1) Put large display monitor on the table.

(2) Use Philips head screwdriver  $\Phi 5$  to remove 46pcs screws (M4\*7). Torque: 5.5+/-0.5kgf.cm



S2

Unplug cable <1>

( 1 ) Unplug power cable from interface board & power board(A & B) ·

( 2 ) Open wire bucket D, E & J, and peel off aluminium foil at F area, peel off acetate tape G, H & I

Fig: 1

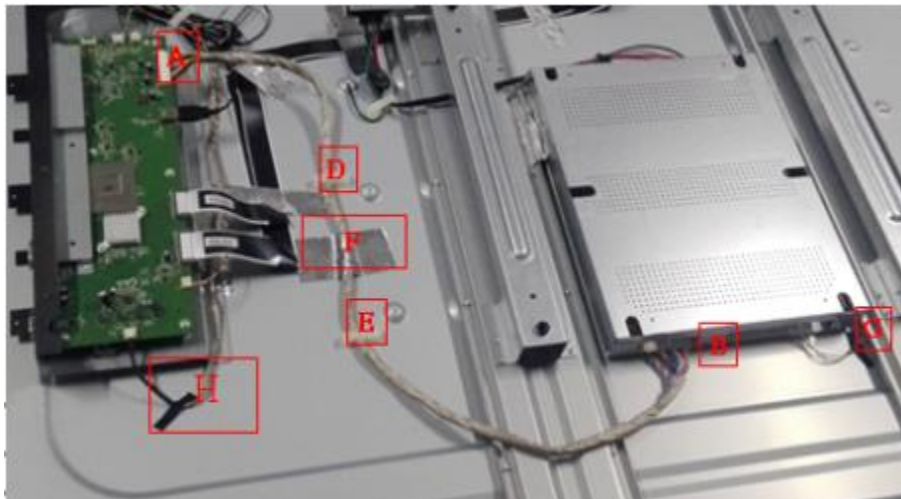


Fig: 2

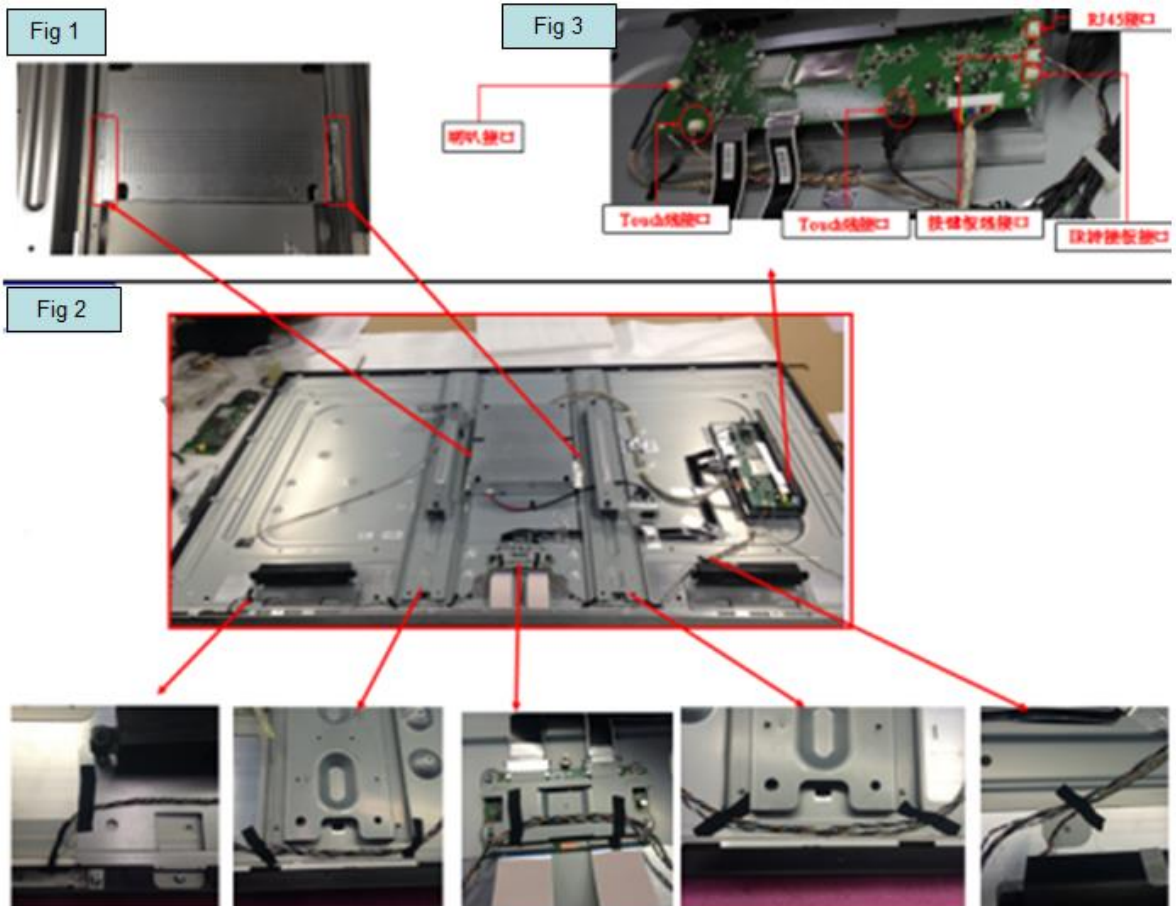


## DELL C7017T (C7016H is applicable- exclude RJ45)

S3

Unplug cable <2>

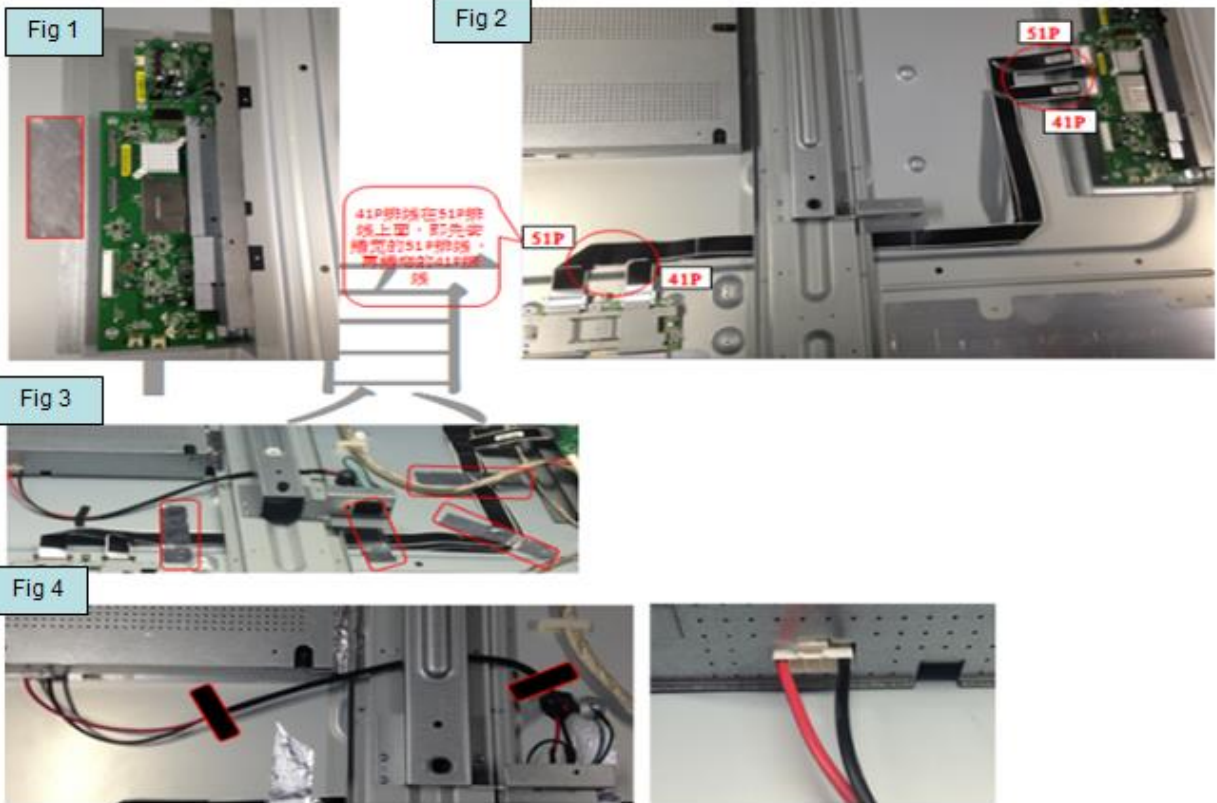
- ( 1 ) Peel off 2pcs aluminium foil.
- ( 2 ) Unplug Interface board cable, keypad cable & 2pcs Touch cables. RJ45 cable & speaker cable.
- ( 3 ) Peel off acetate tape from keypad cable, and speaker cable.



**DELL C7017T (C7016H is applicable- exclude RJ45)**

S4 Unplug cable <3>

- (1) Remove aluminium foil <fig 1>
- (2) Remove 41P & 51P cables <fig 2>
- (3) Peel off 4pcs aluminium foil <fig 3>
- (4) Remove wire buckle as Fig 4. Remove cable from and peel off acetate tape. <fig 4>

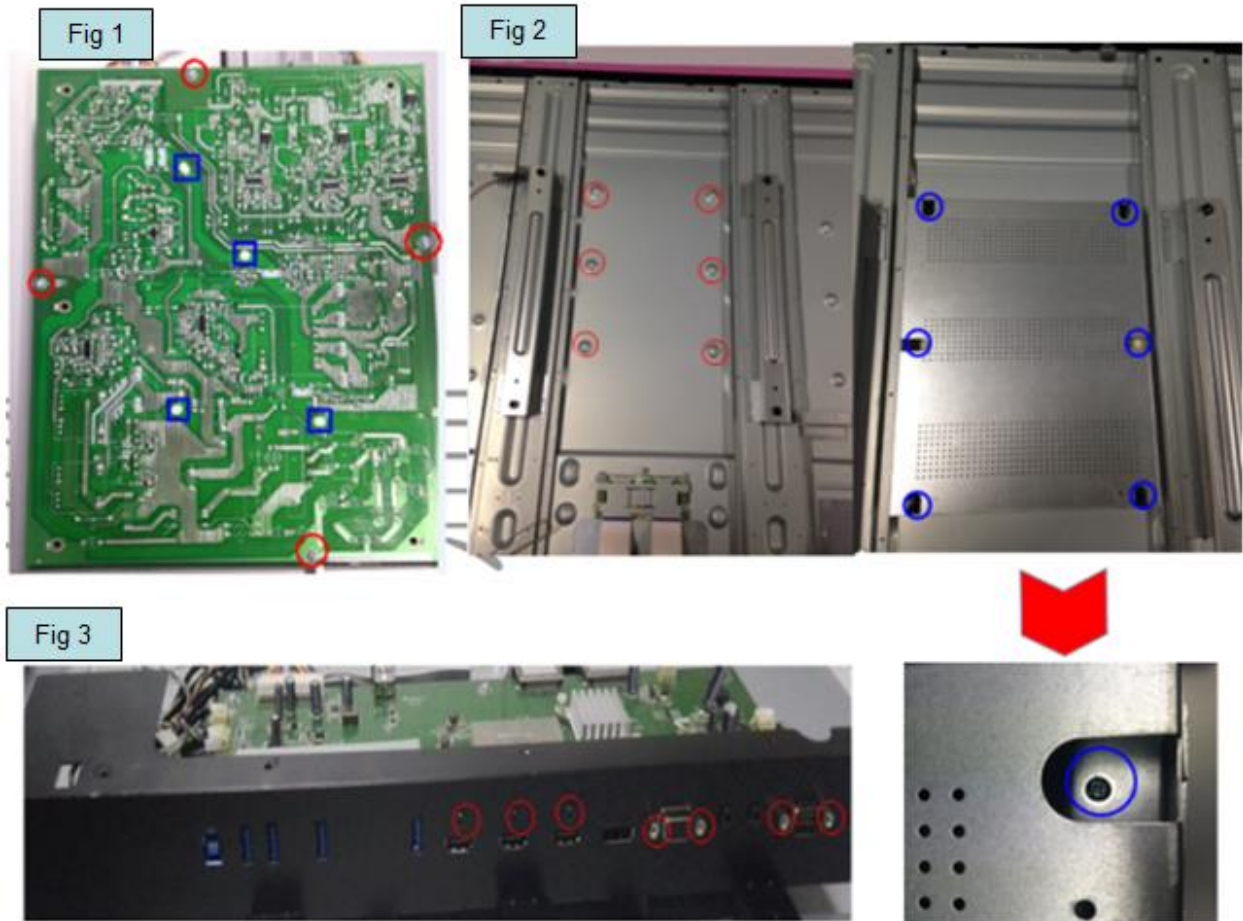


**DELL C7017T (C7016H is applicable- exclude RJ45)**

S5

**Dismantle Power Board**

- ( 1 ) Use Philips head screwdriver  $\Phi 5$  to remove 6pcs screws as (M3\*6) <fig 2>. Torque: 4.5+/-0.5kgf .cm
- ( 2 ) Remove power board shield cover 4pcs screws in the red as fig 1. Torque: 4.5+/-0.5kgf .cm
- ( 3 ) Remove 4pcs power spacer <fig 1> as blue area.
- ( 4 ) Use Philips head screwdriver  $\Phi 5$  to remove HDMI screws \*3pcs . Torque: 4.5+/-0.5kgf .cm
- ( 5 ) Use hexagonal screwdriver to remove VGA & RS232 screws \*2pcs respectively. Torque: 4.5+/-0.5kgf .cm





## DELL C7017T (C7016H is applicable- exclude RJ45)

S6

Remove Power Interface:

- ( 1 ) Use Philips-head screwdriver  $\Phi 5$  to remove power interface screw \*2pcs M3\*5. Torque: 4.5+/-0.5kgf .cm <fig 1 as red>
- ( 2 ) Use Philips-head screwdriver  $\Phi 5$  to remove ground screw M3\*6 <fig 1as blue>. Torque: 4.5+/-0.5kgf .cm
- ( 3 ) Peel off 1pc ground mark sticker <fig 2>.

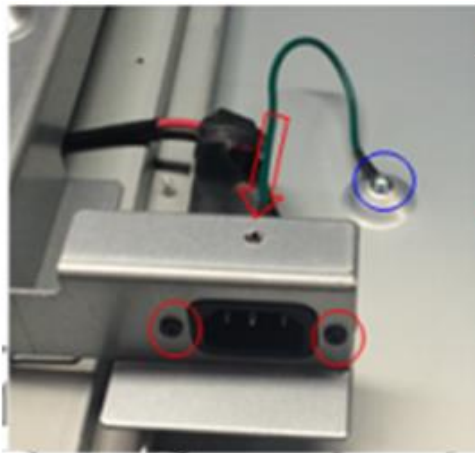


Fig 1

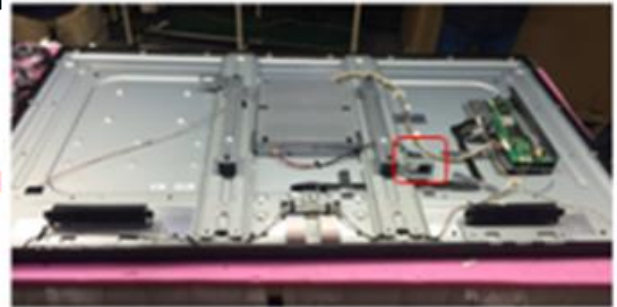


Fig 2



1. 接地 logo 貼紙:  
上下: 居中"接地孔"  
左右: 距"接地孔"5mm

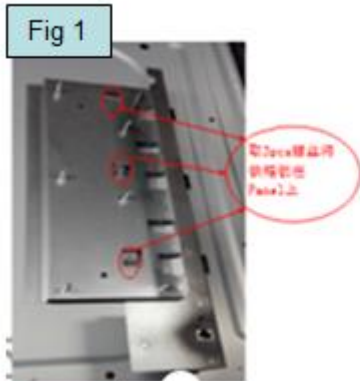


**DELL C7017T (C7016H is applicable- exclude RJ45)**

S7

Dismantle Interface Board

- ( 1 ) remove interface board chassis protector screws \*2pcs M3\*6. Torque: 4.5+/-0.5kgf.cm. And remove chassis protective <fig 2>
- ( 2 ) remove interface board from chassis \*5pcs M3\*6. Torque: 4.5+/-0.5kgf .cm. And remove interface board <fig 2>.
- ( 3 ) remove \*3 screws M3\*6 which interface board chassis fixed on panel. Torque: 4.5+/-0.5kgf .cm. And remove interface board chassis. <fig 1>

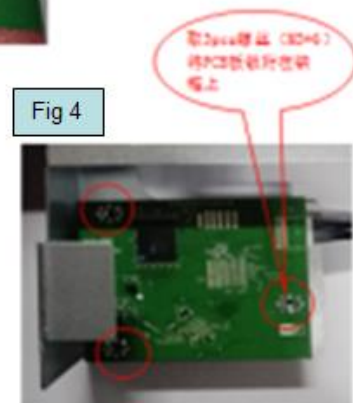
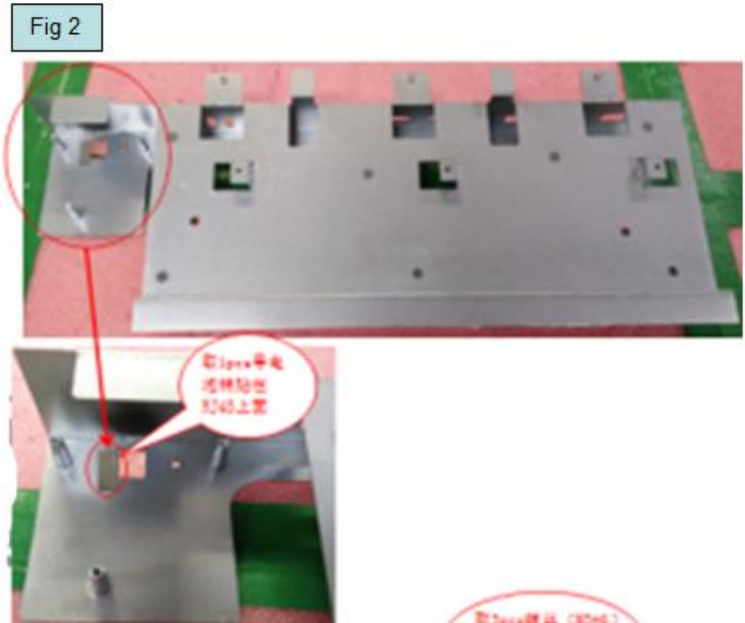
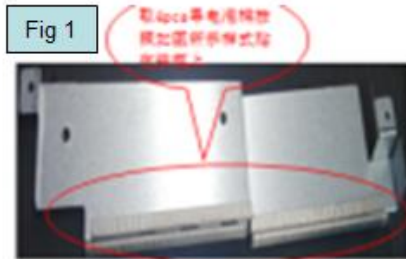


## DELL C7017T (C7016H is applicable- exclude RJ45)

S8

Dismantle Interface board shield & RJ45 plate

- ( 1 ) Use Philips head screwdriver to remove 3pcs screws M3\*6 from RJ 45 board. Torque: 4.5+/-0.5kgf .cm <fig 4>. At the same time remove 1pc RJ45 cable <fig 3>
- ( 2 ) Remove 1pc conductive foam from interface board chassis <fig2>
- ( 3 ) Remove 4pcs conductive foam from interface board shield <fig 1>

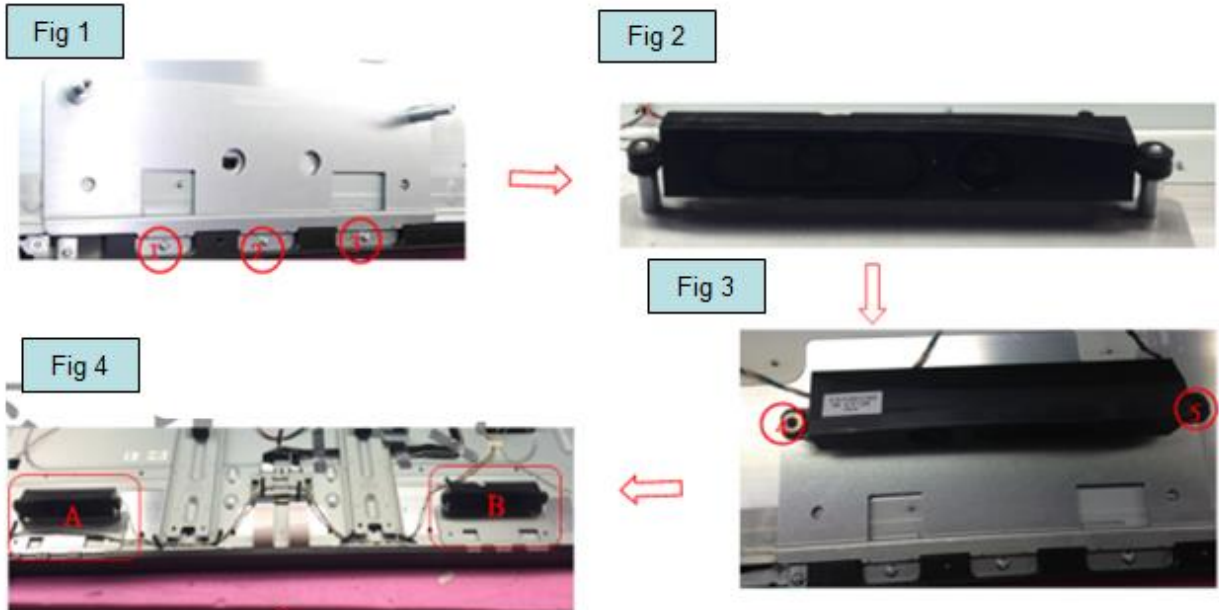


**DELL C7017T (C7016H is applicable- exclude RJ45)**

S9

Dismantle Speaker

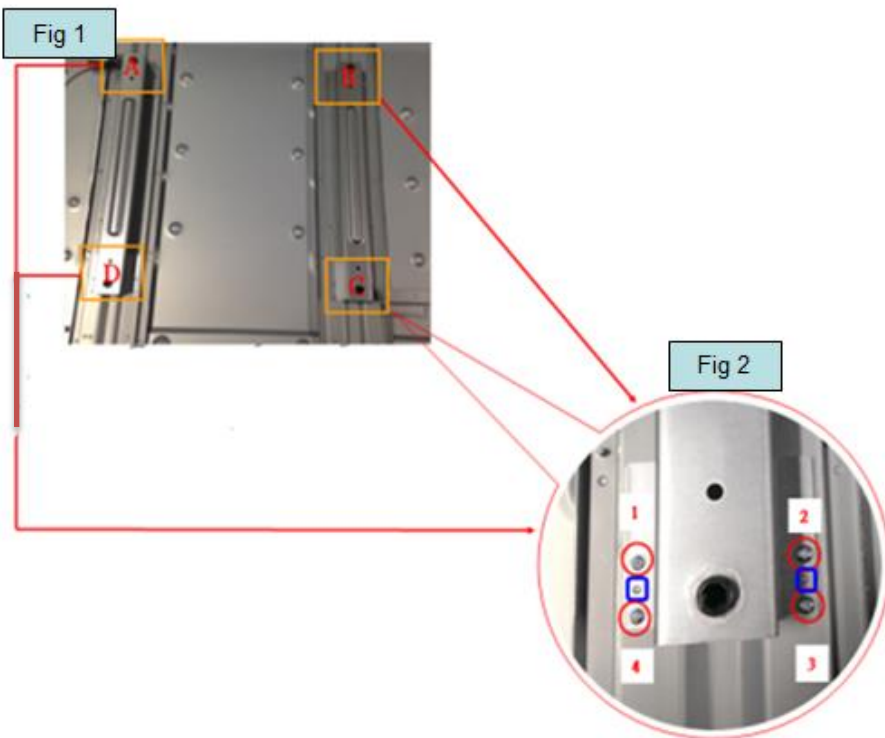
- (1) Use Philips screwdriver to remove 2 sets speaker screws M3\*5. Torque: 4.5+/-0.5kgf .cm <fig 3>.
- (2) Remove 6 screws M3\*6 from speaker brackets. Torque: 4.5+/-0.5kgf .cm <fig 4>



S10

Dismantle wall mount

Use Philips head screwdriver to remove A/B/C/Ds crews · Each area 4 screws, total 16 screws M3\*6. Torque: 4.5+/-0.5kgf .cm





## DELL C7017T (C7016H is applicable- exclude RJ45)

### 2. Product Material Information

The following substances, preparation, or components should be disposed of or recovered separately from other WEEE in compliance with Article 4 of EU Council Directive 75/422/EEC.

Capacitors / Condensers (containing PCB/PCT)	Not used
Mercury containing components	Not used
Batteries	Not used
Printed circuit boards (with surface greater than 10 square cm)	Product has printed circuit boards (with surface greater than 10 square cm)
Component contain toner, ink and liquids	Not used
Plastic containing BFR	
Component and waste contain asbestos	Not used
CRT	Not used
Component contain CFC, HCFC, HGC and HC	Not used
Gas discharge lamps	Not use
LCD display > 100 cm <sup>2</sup>	Product LCD greater than 100cm <sup>2</sup>
External electric cable	Product has external cables
Component contain refractory ceramic fibers	Not used
Component contains radio-active substances	Not used
Electrolyte capacitors (height > 25mm, diameter >25mm)	Not used

### 3. Tools Required

List the type and size of the tools that would typically can be used to disassemble the product to a point where components and materials requiring selective treatment can be removed.

Tool Description:-

- Screwdriver (Philip head with  $\Phi$ 5 mm)
- Screwdriver (Hexgonal to remove VGA connectivity & RS232)