

## 1. Important Safety Notice

### Product Announcement:

This product is certificated to meet RoHS Directive and Lead-Free produced definition. Using approved critical components only is recommended when the situation to replace defective parts. Vender assumes no liability express or implied, arising out of any unauthorized modification of design or replacing non-RoHS parts. Service providers assume all liability.

### Qualified Repairability:

Proper service and repair is important to the safe, reliable operation of all series products. The service providers recommended by vender should be aware of notices listed in this service manual in order to minimize the risk of personal injury when perform service procedures. Furthermore, the possible existed improper repairing method may damage equipment or products. It is recommended that service engineers should have repairing knowledge, experience, as well as appropriate product training per new model before performing the service procedures.

### NOTICE:

! To avoid electrical shocks, the products should be connected to an authorized power cord, and turn off the master power switch each time before removing the AC power cord.

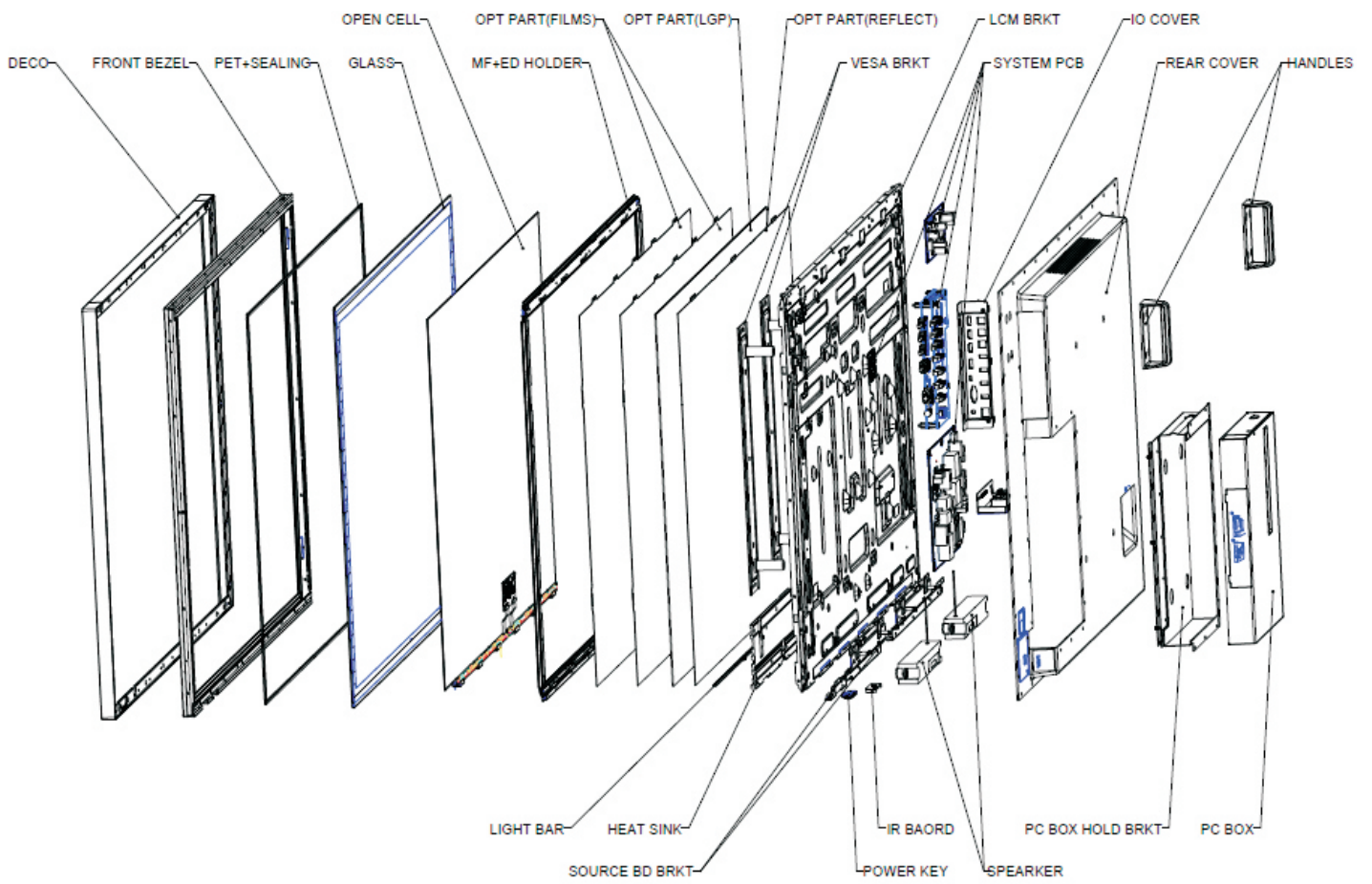
! To prevent the product away from water or expose in extremely high humidity environment.

! To ensure the continued reliability of this product, use only original manufacturer's specified parts.

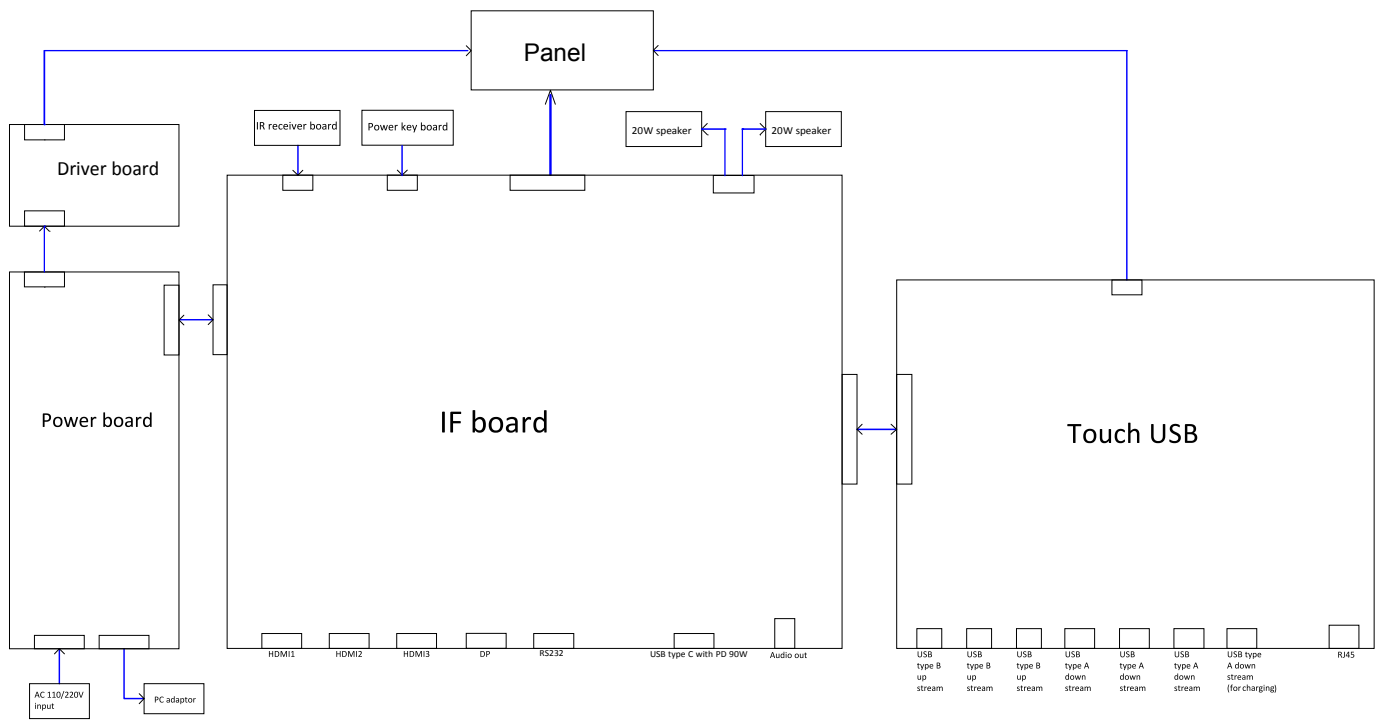
! To ensure following safety repairing behavior, put the replaced part on the components side of PWBA, not solder side.

- ! To ensure using a proper screwdriver, follow the torque and force listed in assembly and disassembly procedures to unscrew screws.
- ! Using Lead-Free solder to well mounted the parts.
- ! The fusion point of Lead-Free solder requested in the degree of 220°C.

## 2. Exploded view diagram with list of items



### 3. Wiring Connectivity Diagram



## 4. Disassembly and Assembly Procedures

Necessary repair and test equipment:

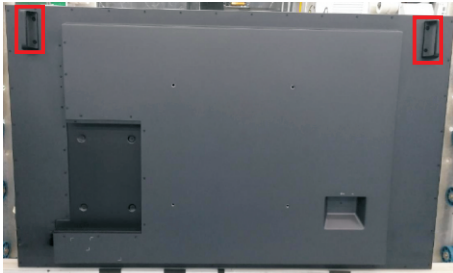
1. Philips-head screwdriver
2. Hex-head screwdriver
3. Air gun and roller

4.1 Disassembly Procedures:

S1

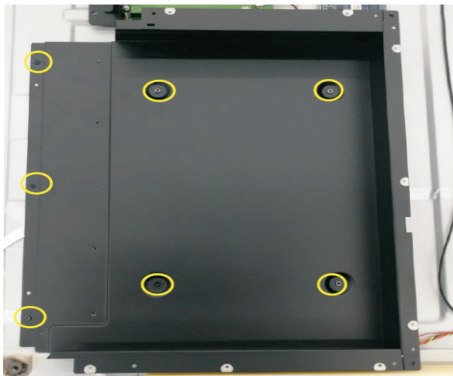
Use a screwdriver to remove 8pcs screws for releasing the handles. (Torque:  $15 \pm 0.5 \text{kgf}$ )

Remove 57pcs screws for unlocking the rear cover with the assembled unit. (Torque:  $3 \pm 0.3 \text{kgf}$ )



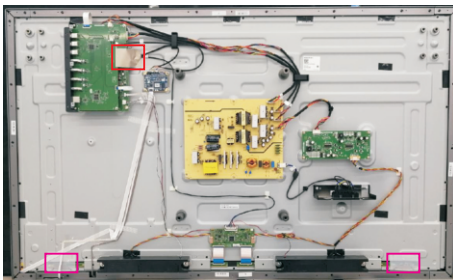
S2

Remove the handles and rear cover, then use a screwdriver to remove 7pcs screws for releasing the PC box. (Torque:  $4.5 \pm 0.3 \text{kgf}$ )



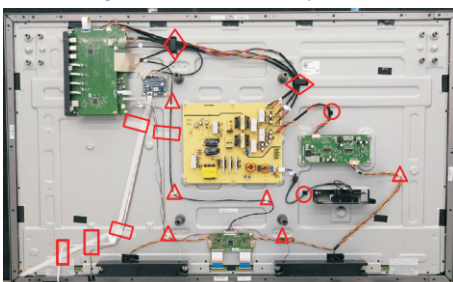
S3

Tear off 1pcs conductive tape for releasing main board, USB board and LVDS cable. Remove 2pcs white mylar tapes.



S4

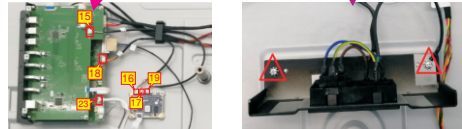
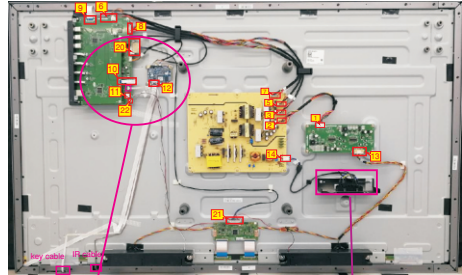
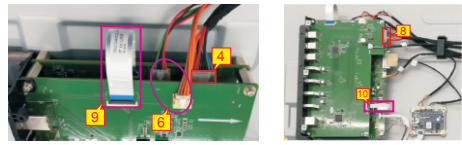
Remove 5pcs white tapes, 2pcs big black wire locks, 2pcs small black wire locks and 6pcs white wire locks for unfixing the cables as the picture below shown.



S5

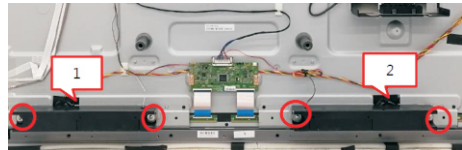
Disconnect all the cables as the picture below shown.

Use a screwdriver to remove 2pcs screws for unlocking AC power outlet. (Torque:  $4.5 \pm 0.5 \text{kgf}$ )



S6

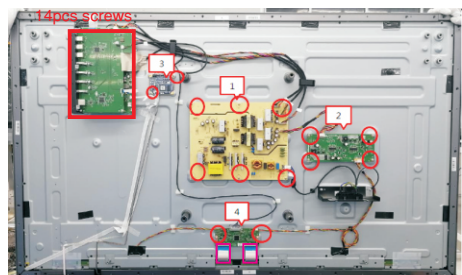
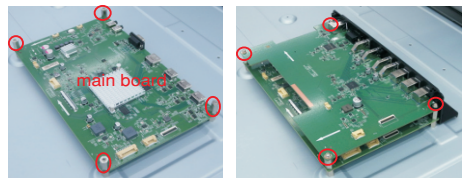
Use a screwdriver to remove 4pcs screws for unlocking the two speakers. (Torque:  $4.5 \text{kgf} \pm 0.5$ )



Use a Hex-head screwdriver to remove 2pcs screws for unlocking RS232 connectors. (Torque:  $4.5 \text{kgf} \pm 0.5$ )

S7

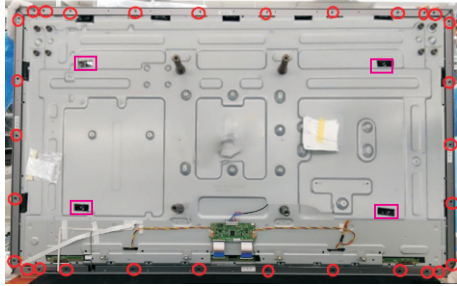
Use a screwdriver to remove 12pcs screws for unlocking the USB board, IO holder and main board, remove 17pcs screws for locking the power board, driver board, touch board and T-Con board. (Torque:  $4.5 \text{kgf} \pm 0.3$ ) Disconnect all the FFC cables away from the T-con board.



## 4. Disassembly and Assembly Procedures

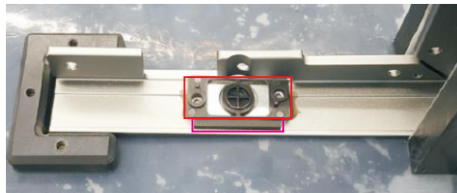
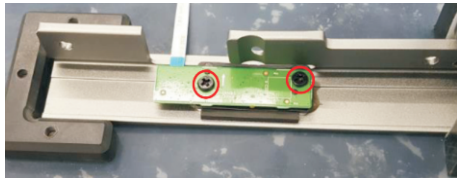
S8

Use a screwdriver to remove 30pcs screws (left: 5pcs, right :5pcs, top: 10pcs, bottom: 10pcs) for unlocking 4pcs strips, then tear off 4pcs shading tape. (Torque:  $4.5\pm 0.5\text{kgfkgf}$ )



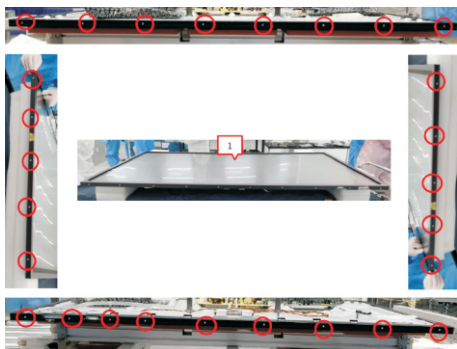
S9

Use a screwdriver to remove 2pcs screws for unlocking the key board and the holder with strip. (Torque:  $2\pm 0.3\text{kgf}$ )



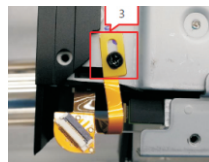
S10

Use a screwdriver to remove 27pcs screws for unlocking the front bezels(top, left, right, bottom). (Torque:  $3\pm 0.3\text{kgf}$ )



S11

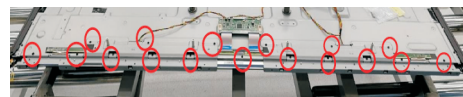
Disconnect the touch connective cable with the monitor. Use a screwdriver to remove one screw for locking the grounding wire of the import-export cable, then disconnect the connective cable from the import and export cable. (Torque:  $3\pm 0.3\text{kgf}$ )



S12



Use a screwdriver to remove 17pcs(11+6) screws (Torque:  $6\pm 0.3\text{kgf}$ ) for unlocking the ED holder with the assembled unit.



S13

Use a screwdriver to remove 8pcs screws for unlocking the two bracket with the bottom ED holder. (Torque:  $3\pm 0.3\text{kgf}$ )



S14

Remove all the bezel and strips and put them on a protective cushion. Open the IR board cover, then use a screwdriver to remove 2pcs screws for unlocking the IR board and holder with front bezel, then use a screwdriver to remove 2pcs screws for unlocking the light pipe with front bezel. (Torque:  $3\pm 0.3\text{kgf}$ )

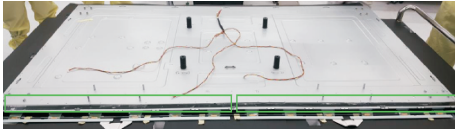
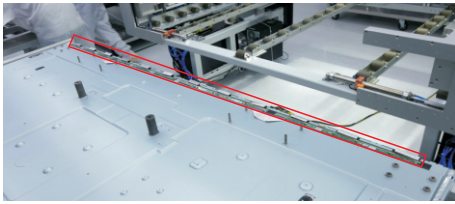


S15

Tear off 6pcs conductive foams on the specific position of the COF of the SB, then tear off all the tape and foams, and release the O/C SB away from the back bracket.

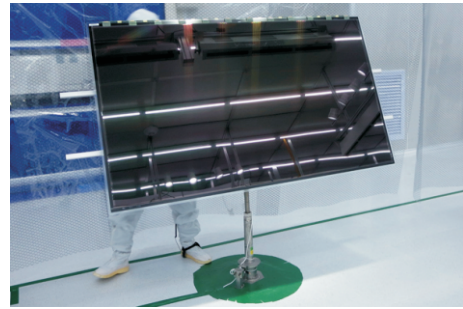
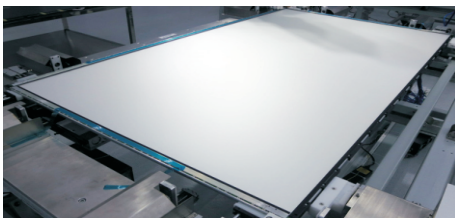
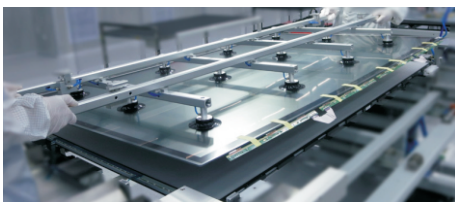
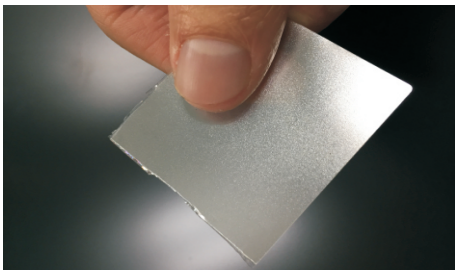
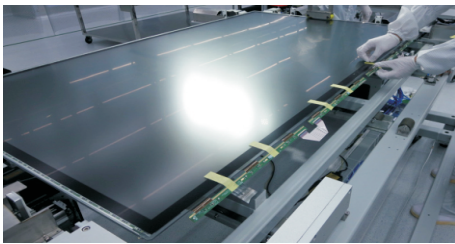


## 4. Disassembly and Assembly Procedures



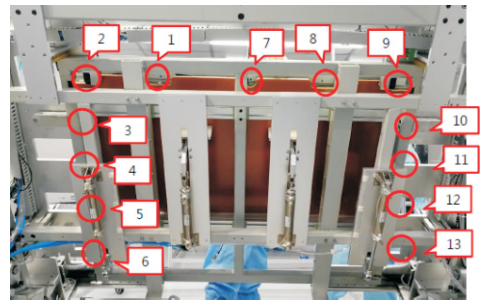
Tear off 2pcs shading mylar tape for releasing the wire hole of the lighter bar. Turn over the panel module with the bracket for screen faced up. Use a thin film (such as Prism film) to disassemble the O/C with glass carefully, then remove the O/C with glass and put then on a protective cushion.

S16



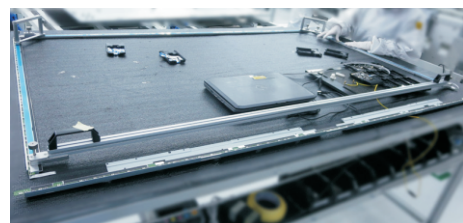
Use a tripper to lift up the unit, then use a screwdriver to remove 13pcs screws for unlocking the ED unit, then use the tripper to put down the unit. (Torque:  $3.5 \pm 0.3 \text{kgf}$ )

S17



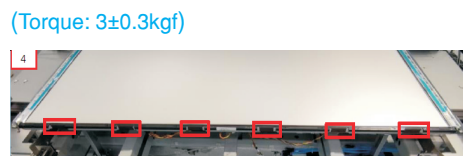
Use a ED holder fixture to fix the ED holders, then tear off all the tapes and rubbers, then lift up the ED holder unit for removing the ED unit, and then put the unit on a protective cushion.

S18

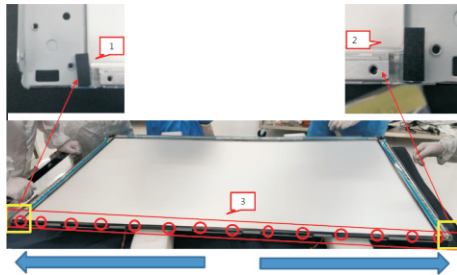


Tear off 6pcs acetate tapes and 2pcs shading foam, then use a screwdriver to remove 17pcs screws for unlocking the bottom-middle bezel.

S19

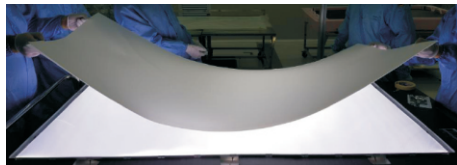


## 4. Disassembly and Assembly Procedures



S20

Remove 1pcs DEBF film, 1pcs Diffuser film, 1pcs LGP, 1pcs Reflector film away from the back bracket.



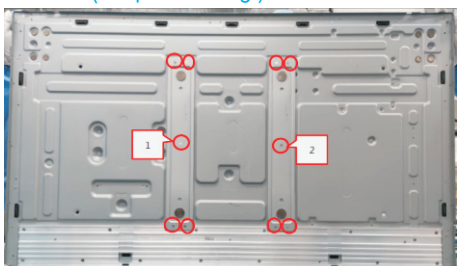
S21

Tear off the tape, then disconnect the L/B cable from the connector, then tear off the L/B from the L/B heat sink. Use a screwdriver to remove 14pcs screws for unlocking the L/B heat sink with the back bracket. (Torque:  $5\pm 0.5\text{kgf}$ )



S22

Use a screwdriver to remove 10pcs screws for unlocking the two VESA brackets with back bracket. (Torque:  $5\pm 0.5\text{kgf}$ )

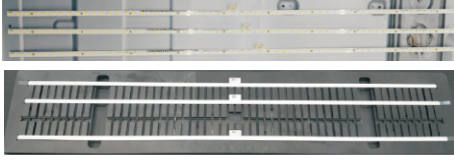


## 4. Disassembly and Assembly Procedures

### 4.2 Assembly Procedures:

S1

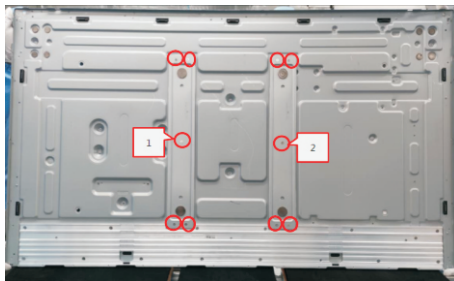
Preparation: Take 2pcs light bar and 2pcs double-faced tape, 1pcs L/B heat sink . Paste 1pcs double-faced tape on the back of the light bar as the picture below shown.



S2

Put 1pcs back bracket on the working table, then take 2pcs VESA brackets to assemble with the back bracket. Use a screwdriver to tighten 10pcs screws for locking the two VESA brackets with back bracket.

(Torque:  $5\pm 0.3\text{kgf}$ )



S3

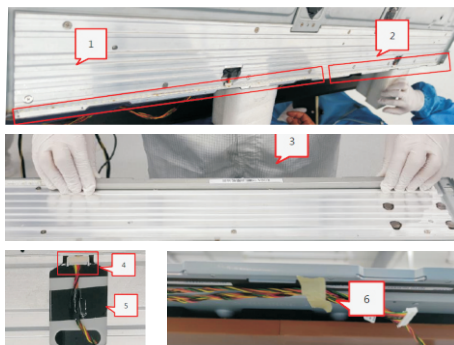
Assemble the L/B heat sink with back bracket. Use a screwdriver to tighten 14pcs screws for locking the L/B heat sink with the back bracket.

(Torque:  $5\pm 0.5\text{kgf}$ )



S4

Tear off the papers of double-faced tapes on the L/B, then paste 2pcs L/B from left to right(1~2) on the hooks of the L/B heat sink, then use a laminating fixture to fix the light bar with the heat sink. Connect 2pcs L/B cables to the connectors, then fix the L/B cables with 2pcs tapes on the back bracket.



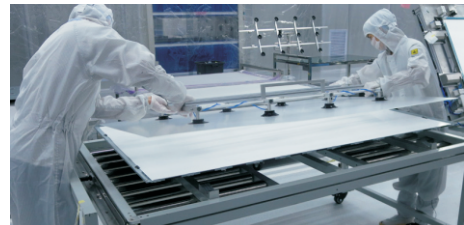
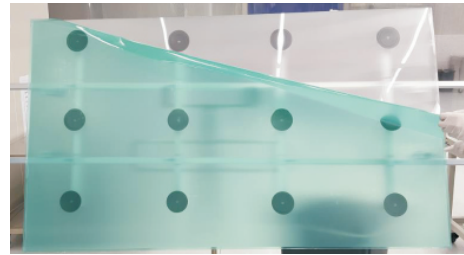
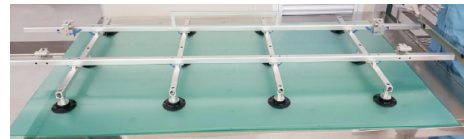
S5

Assemble 1pcs reflector film into the back bracket. Make sure the gap between light and Reflector  $>1.2\text{mm}$ .



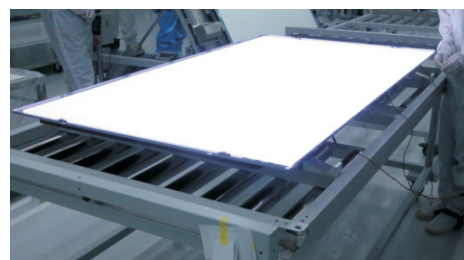
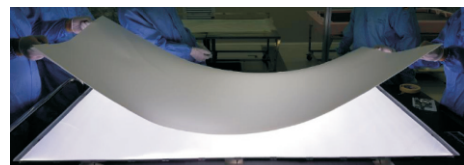
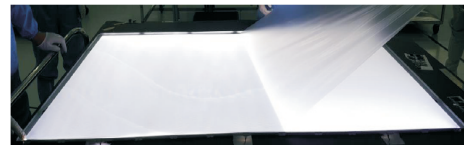
S6

Use a sucking tool to suck 1pcs LGP, then tear off the back protective film of the LGP. Assemble the LGP with the Reflector and back bracket, then power on and make sure there is no particles on the film.



S7

Tear off the front film of the LGP, then place 1pcs Diffuser film on the back bracket, then place 1pcs DEBF film on the back bracket, and then power on to check and make sure no particles on the films.

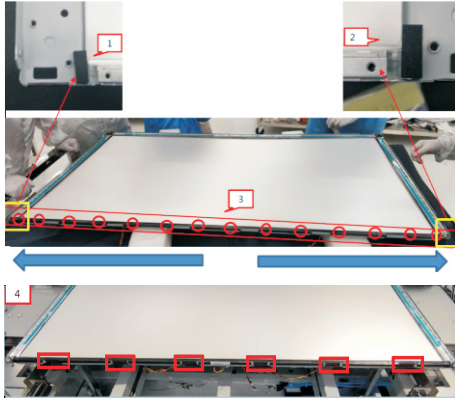




## 4. Disassembly and Assembly Procedures

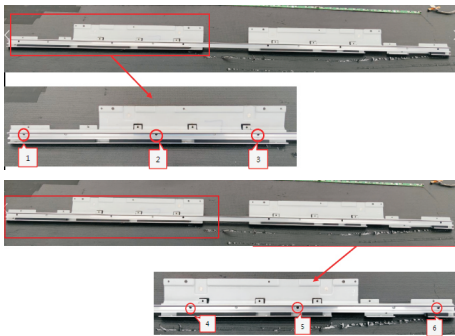
S8

Paste 2pcs shading foams on the left and right of the unit. Take 1pcs bottom-middle bezel to assemble with the unit, then use a screwdriver to lock bottom-middle bezel with 14pcs screws. Paste 6pcs Acetate tape on bottom-middle bezel. (Torque:  $3.5 \pm 0.3 \text{kgf}$ )



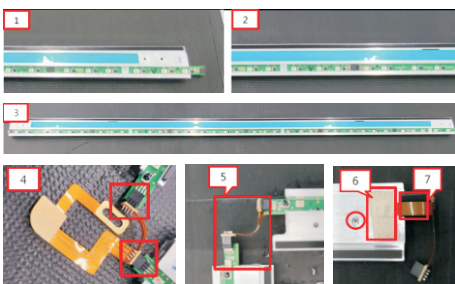
S9

Take 1pcs bottom-ED-holder and 2pcs small brackets, then use a screwdriver to tighten 6pcs screws for locking the two bracket with the bottom ED holder for later assembling. (Torque:  $3 \pm 0.3 \text{kgf}$ )

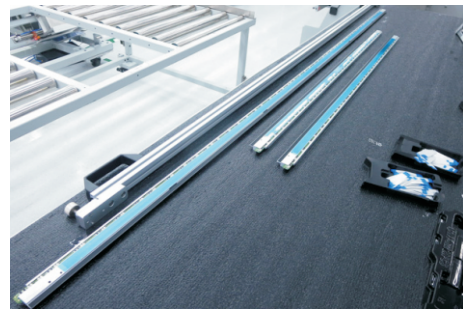


S10

Take 1pcs ED Holder, 1pcs ED board, then insert 1st ED board into the ED holder as the picture 1. Connect 2nd ED board with 1st ED board as picture 2. Insert the ED boards into the ED holder as picture 3. Use 1pc Import and export cable to connect right ED holder and bottom holder as picture 4. Insert 4pcs ED boards into top ED holder, Insert 2pcs ED boards into either ED holders (left and right). Use 3pcs cables to connect ED boards of the top, right, bottom and left ED holders as picture 5. Paste 3pcs conductive tape to fix the cables on holders and 8pcs rubbers on the back of the ED boards. (picture 6~7)

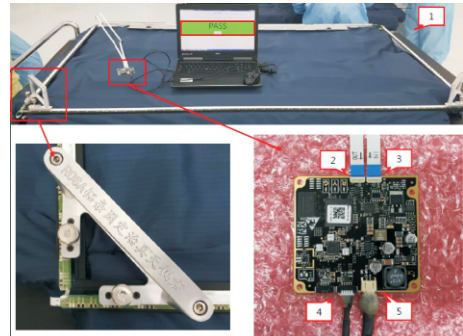


Note: LS: the board is for Top ED holder; SS: the hold is for left and right ED holder.



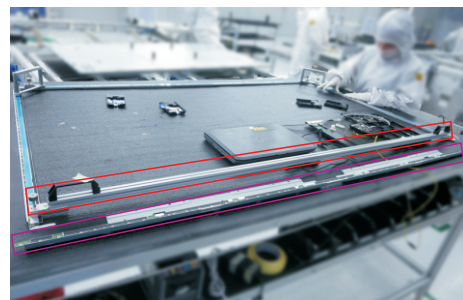
S11

Place the Top, left, right and bottom assembled ED holder units to form a square and then connect them with the FFC cables, then fix the ED unit with a fixture. Connect the FFC cable of ED board to the connectors of the touch board, then connect the power cable and signal cable to the touch board, then run the special program and input SN for testing, it stand ok when you see Pass on the screen.



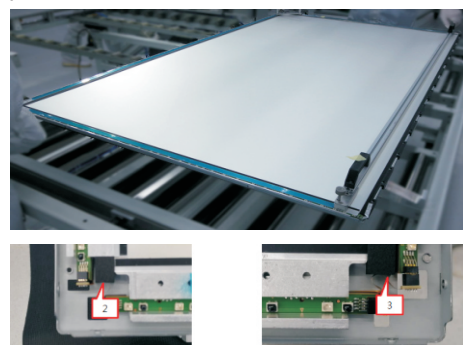
S12

Disconnect the bottom ED holder away from the left and right ED holders, then replace the bottom ED holder with a fixture Jip as the picture below shown.



S13

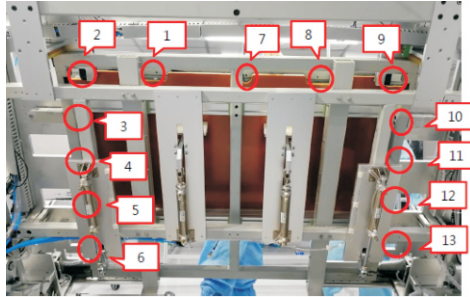
Assemble the ED holders unit with the assembled back bracket, then push the whole unit into a tripper, then paste 2pcs rubbers on the top side as the picture below shown.



## 4. Disassembly and Assembly Procedures

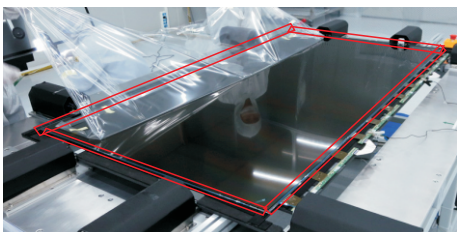
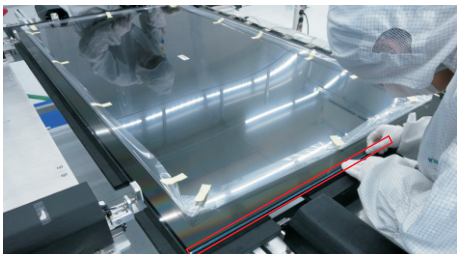
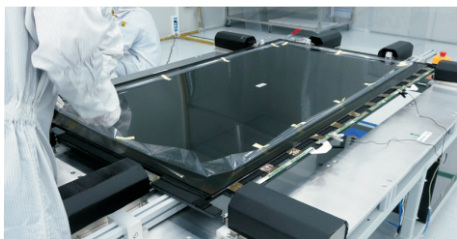
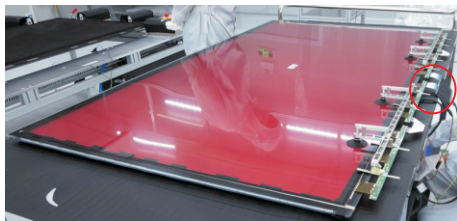
S14

Operate the tripper to overturn the unit, then use a screwdriver to lock 13pcs screws for locking the ED unit with the back bracket, then turn over the unit for later assembling. (Torque:  $3.5 \pm 0.3 \text{kgf}$ )



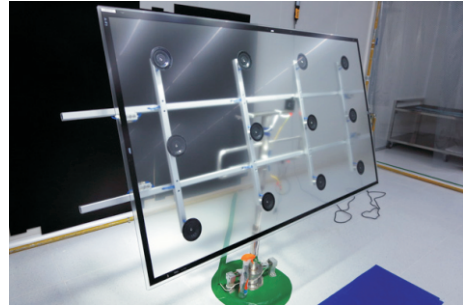
Use a sucking tool to suck 1pcs O/C module and place it on a protective cushion, then supply power and signal to the O/C module for functionality check, then disconnect the cables. Paste 4pcs release tapes around edge of screen of the O/C module, then tear off the protective film of the O/C module.

S15



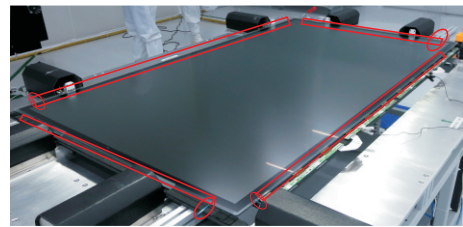
S16

Use a sucking tool to suck 1pcs glass and set it on a jip, then check the glass carefully and make sure no particles on the glass.



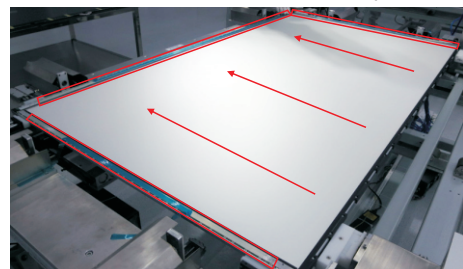
Use a sucking tool to suck the glass and then assemble the glass with the O/C module, then tear off all release papers around edges of the O/C module., and then press the glass with a roll for two parts firmly attachment.

S17

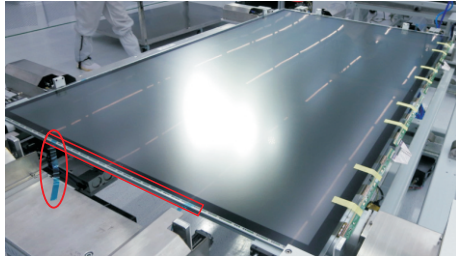
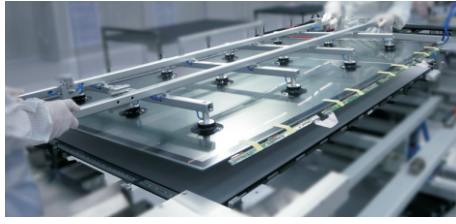


Use a roller to clean the film as the direction of the arrow. Use a sucking tool to move the O/C with glass module to assemble with the back bracket. Tear off the releaser papers of left, right and top ED holders, and then use a roller to press the O/C with glass module with the back bracket firmly attached.

S18

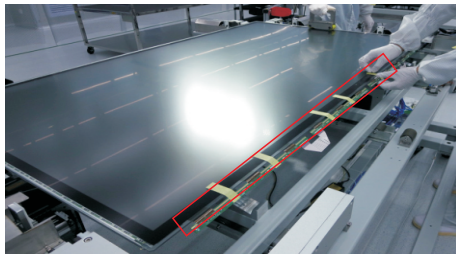


## 4. Disassembly and Assembly Procedures



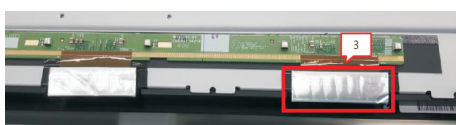
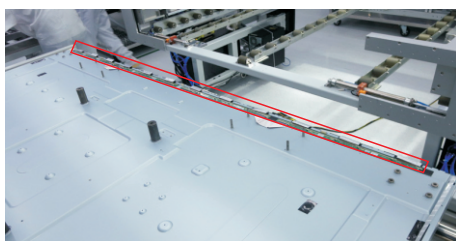
S19

Use textured tape to fix the SB of the O/C, then turn over the unit to let the back bracket faced up. Use 2pcs shading mylar tape to cover the wire holes of Light bar.



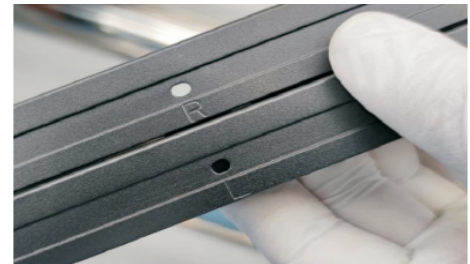
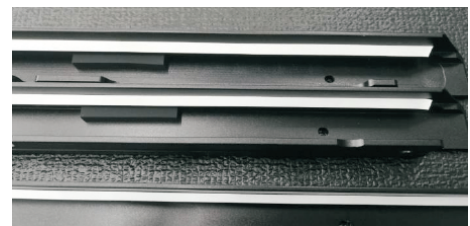
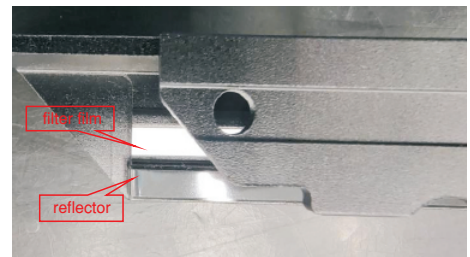
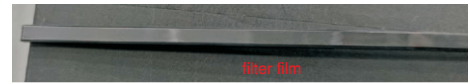
S20

Tear off the textured tape of SB of O/C. Paste 1pcs long double-faced foam bottom side of the back bracket. Tear off the release tapes and paste the SB on the back bracket, then paste 6pcs conductive foams on COF of SB.



S21

Take 1pcs top front bezel, 1pcs left front bezel, 1pcs right front bezel, 1pcs bottom front bezel, 4pcs filter films, 4pcs filter foams(long 2pcs and short 2pcs), 4pcs reflector (long 2pcs and short 2pcs). Paste the filter foam on the filter film. Paste the reflector and assembled filter films on the bezel as the picture below shown.



S22

Take 1pcs light pipe, and then use a screwdriver to lock 2pcs screws for locking the light pipe with front bezel. Take 1pcs IR board and 1pcs IR holder and 1pcs shading tape, then assemble the IR board with IR holder, then use a screwdriver to lock 2pcs screws for locking the IR holder with front bezel, then assemble 1pcs IR board cover to bottom-side bezel.

(Torque:  $3\pm 0.3\text{kgf}$ )

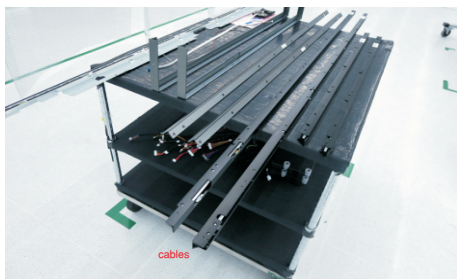
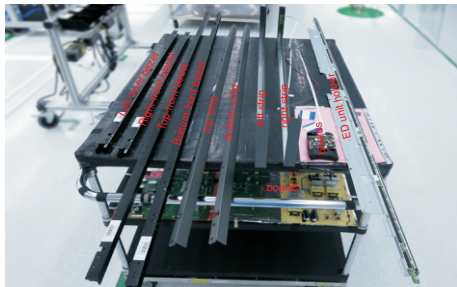


## 4. Disassembly and Assembly Procedures

S23

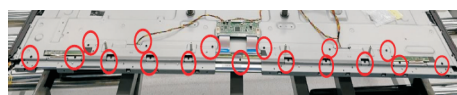
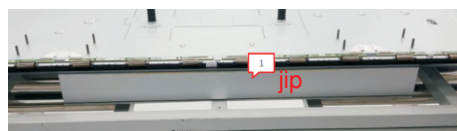


Prepare all the cables, all boards, and all the bezel and strips, then place all the cables, boards and bezel on a working tables as the picture below



Make sure ED FFC cables are connected well, then put a jip under the assembled unit. Assemble 1pcs ED holder with the assembled unit, and then use a screwdriver to tighten 17pcs (11+6) screws for locking the ED holder with the assembled unit as the picture below shown.

(Torque: 6±0.3kgf)



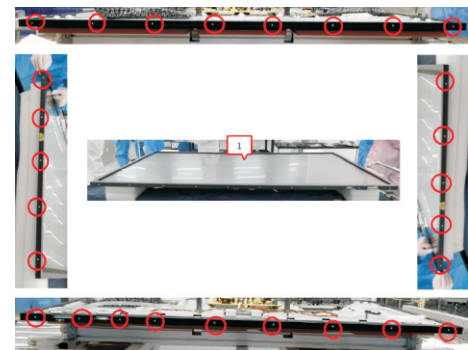
S25

Connect the connective cable with the import and export cable. Use a screwdriver to tighten 1pcs screw for locking the grounding wire of the import-export cable. Assemble 1pcs touch connective cable with the monitor. (Torque: 3±0.3kgf)



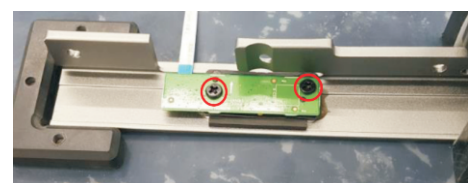
Assemble 4pcs front bezels(top, left, right, bottom) with the assembled unit, then use a screwdriver to tighten 27pcs screws for locking the front bezels with the assembled unit. (Torque: 3±0.3kgf)

S26



Paste 1pcs shading foam on the strip of bottom side, then assemble 1pcs key board holder with the strip as the picture below shown. Connect 1pcs key cable to the key board, then locate the key board into the holder and use a screwdriver to tighten 2pcs screws for locking the board and the holder with strip.

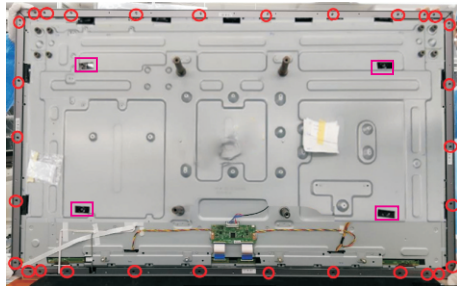
S27



## 4. Disassembly and Assembly Procedures

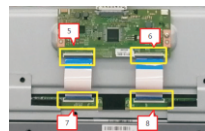
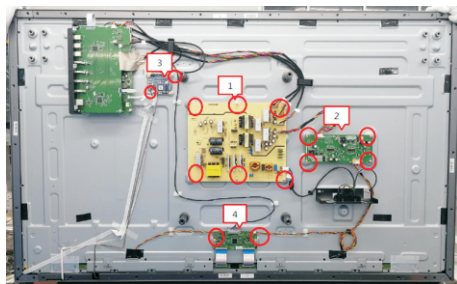
S28

Paste 4pcs shading tape. Assemble 4pcs strips(top, left, right, bottom) with the assembled unit. Use a screwdriver to tighten 30pcs (left: 5pcs, right :5pcs, top: 10pcs, bottom: 10pcs) screws for locking the 4pcs strip with the assembled unit.(Torque:  $4.5\pm 0.5\text{kgf}$ )



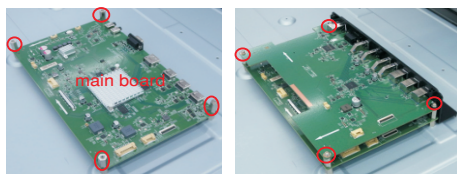
Assemble 1pcs power board (FIG.1), 1pcs driver board(FIG.2), 1pcs touch board(FIG.3) and 1pcs T-Con board(FIG.4) with back bracket. Take 2pcs FFC cables to connect the T-con board with SB of O/C.(FIG.6~13) Use a screwdriver to lock 14pcs screws for locking power board, driver board, touch board and T-con board.(Torque:  $4.5\text{kgf}\pm 0.3$ )

S29



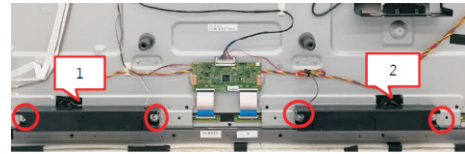
Use a screwdriver to lock 4pcs screws to the back bracket, then use a screwdriver to lock 4pcs screws for locking 1pcs main board with the screws, and then assemble 1pcs USB board and 1pcs IO holder with the main board, then lock 4pcs screws for locking the USB board, lock 2pcs hex screws for locking the RS232 connector. (Torque: $4.5\text{kgf}\pm 0.5$ )

S30



S31

Take a pair of speakers to assemble with the back bracket, then use a screwdriver to lock 4pcs screws for locking speakers with the unit. (Torque:  $6\text{kgf}\pm 0.5$ )

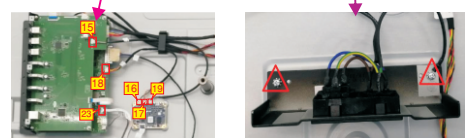
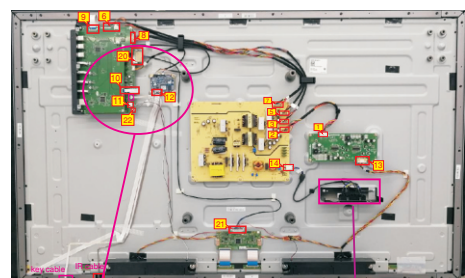
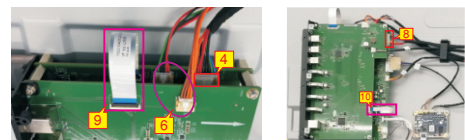


Take 1pcs cable to connect driver board with power board(FIG.1~2). Take 1pcs cable(2 connectors) to connect the power board with USB board(FIG. 3~4). Take 1pcs cable(3 connectors) to connect the power board with main board and USB board(FIG.5~6).

Take 1pcs cable(2 connectors) to connect the power board with the USB board (FIG.7~8). Take 1pcs connective cable to connect USB board with main board(FIG.9). Take 1pcs IF to Usb FFC to connect the main board with the Usb board(FIG.10). Connect the speakers' cable to the connector of main board(FIG.11).

S32

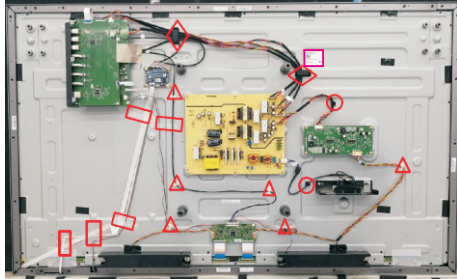
Connect the touch cable to the connector of touch board(FIG.12). Connect the L/B cable to the connector of the driver board (FIG.13). Take 1pcs AC power outlet and cable to assemble with the back bracket, then use a screwdriver to lock 2pcs screws for locking the AC outlet and grounding wire, then plug the other end of cable to the power board.(FIG.14)(Torque: $4.5\text{kgf}\pm 0.5$ ) Take 1pcs cable (3 connectors) connect touch board with main board (FIG.15~17), take 1pcs cable(2 connectors) connect touch board with USB board (FIG.18~19). Take 1pcs LVDS cable to connect main board with T-con board(FIG.20~21). Connect 1pcs IR cable to connect the main board.(FIG.22) Connect the function key cable to the connector of the main board.(FIG.23)



## 4. Disassembly and Assembly Procedures

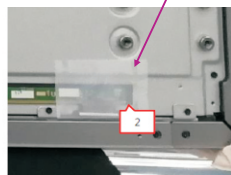
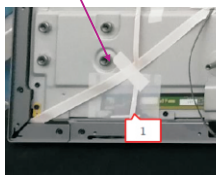
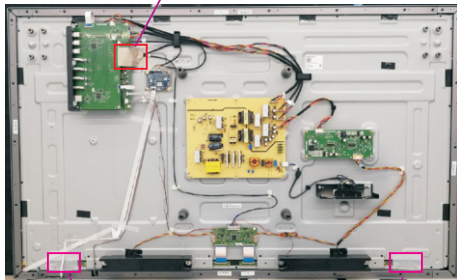
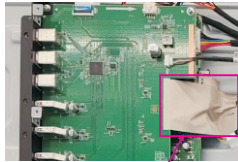
S33

Paste 1pcs LCM SN label on the back bracket as the picture below shown. Use 2pcs big black, 2pcs small black and 6pcs white wire locks to fix the cables and then paste them on the back bracket. Paste 5pcs white tapes to fix the cables as the picture below shown.



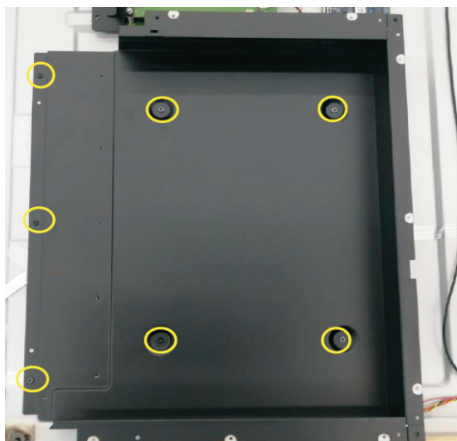
S34

Paste 1pcs conductive tape to cover main board and USB board. Paste 2pcs white mylar tape on the specific position as the picture below shown.



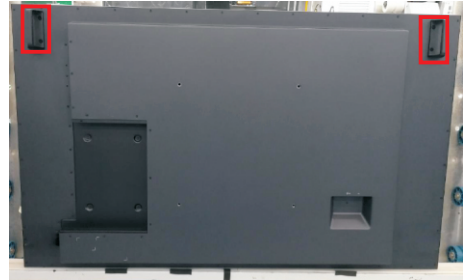
S35

Place 1pcs PC box to the specific positions of the whole unit, then use a screwdriver to lock 7pcs screws for fixing the PC box. (Torque: 4.5±0.3kgf)



S36

Take 1pcs rear cover, assemble the rear cover with the assembled unit, then use a screwdriver to lock the rear cover with 57pcs screws. (Torque: 3±0.3kgf)  
Use a texture to paste 1psc cable lock on the specific position of the rear cover.  
Assemble 2pcs handles with the rear cover, then lock the handles with 8pcs screws. (Torque: 15±0.5kgf)



S37

Use a clean cloth to wipe the screen of the monitor, then check the monitor following the inspection spec, and wipe the screen with a clean cloth again after checking.



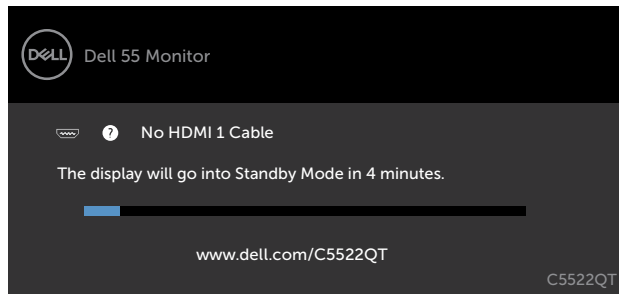
## 5. Trouble Shooting Instructions

### Self-Test

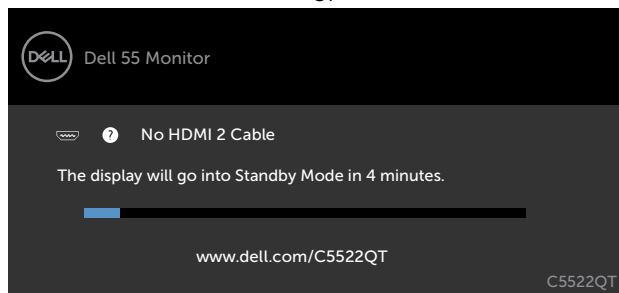
Your display provides a self-test feature that allows you to check whether your display is functioning properly. If your display and computer are properly connected but the display screen remains dark, run the display self-test by performing the following steps:

1. Turn off both your computer and the display.
2. Unplug the video cable from the back of the computer. To ensure proper Self-Test operation, remove all digital and the analog cables from the back of computer.
3. Turn on the display.

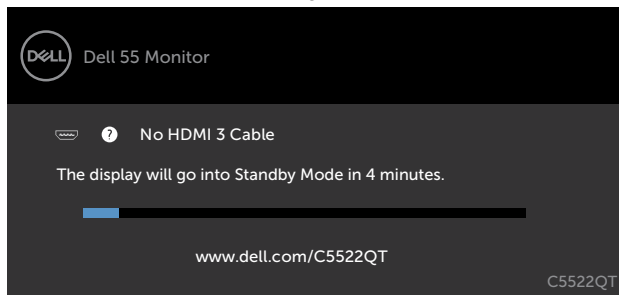
The floating dialog box should appear on-screen (against a black background), if the display cannot sense a video signal and is working correctly. While in self-test mode, the power LED remains white. Also, depending upon the selected input, one of the dialogs shown below will continuously scroll through the screen.



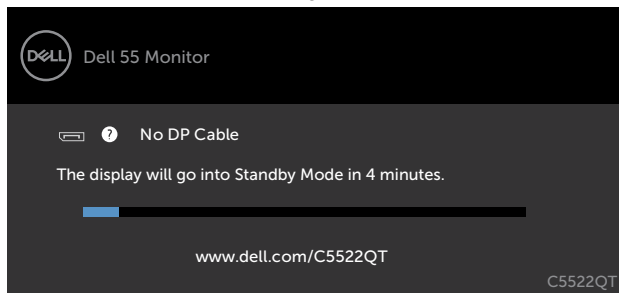
or



or

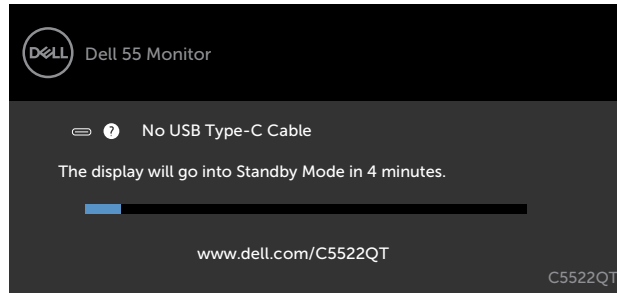


or



## 5. Trouble Shooting Instructions

or

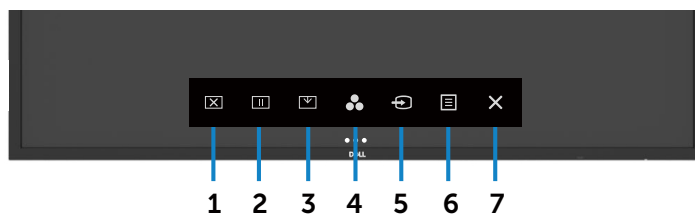


4. This box also appears during normal system operation, if the video cable becomes disconnected or damaged.
5. Turn off your display and reconnect the video cable; then turn on both your computer and the display.



If your display screen remains blank after you use the previous procedure, check your video controller and computer, because your display is functioning properly.

## Built-in diagnostics

Your display has a built-in diagnostic tool that helps you determine if the screen abnormality you are experiencing is an inherent problem with your display, or with your computer and video card.



To run the built-in diagnostics:

1. Make sure that the screen is clean (no dust particles on the surface of the screen).
2. Touch and hold  for 5 seconds in lock Select Option. Touch the self-inspection icon . A gray screen appears.
3. Carefully inspect the screen for abnormalities.
4. Touch the front panel. The color of the screen changes to red.
5. Inspect the display for any abnormalities.
6. Repeat steps 4 and 5 to inspect the display in green, blue, black, white, and text screens.

The test is complete when the text screen appears. To exit, touch panel again.

If you do not detect any screen abnormalities upon using the built-in diagnostic tool, the display is functioning properly. Check the video card and computer.



## 5. Trouble Shooting Instructions

### Common problems

The following table contains general information about common display problems you might encounter and the possible solutions:

Common Symptoms	What You Experience	Possible Solutions
No Video/ Power LED off	No picture	<ul style="list-style-type: none"><li>• Ensure that the video cable connecting the display and the computer is properly connected and secure.</li><li>• Verify that the power outlet is functioning properly using any other electrical equipment.</li><li>• Ensure that the power button is depressed fully.</li><li>• Ensure that the correct input source is selected in the <a href="#">Input Source</a> menu.</li></ul>
No Video/ Power LED on	No picture or no brightness	<ul style="list-style-type: none"><li>• Increase brightness &amp; contrast controls via OSD.</li><li>• Perform display self-test feature check.</li><li>• Check for bent or broken pins in the video cable connector.</li><li>• Run the built-in diagnostics.</li><li>• Ensure that the correct input source is selected in the <a href="#">Input Source</a> menu.</li></ul>
Poor Focus	Picture is fuzzy, blurry, or ghosting	<ul style="list-style-type: none"><li>• Eliminate video extension cables.</li><li>• Reset the display to factory settings.</li><li>• Change the video resolution to the correct aspect ratio.</li></ul>
Shaky/Jittery Video	Wavy picture or fine movement	<ul style="list-style-type: none"><li>• Reset the display to factory settings.</li><li>• Check environmental factors.</li><li>• Relocate the display and test in another room.</li></ul>
Missing Pixels	LCD screen has spots	<ul style="list-style-type: none"><li>• Cycle power on-off.</li><li>• Pixel that is permanently off is a natural defect that can occur in LCD technology.</li><li>• For more information on Dell Display Quality and Pixel Policy, see Dell Support site at: <a href="http://www.dell.com/support/monitors">http://www.dell.com/support/monitors</a>.</li></ul>

## 5. Trouble Shooting Instructions

<b>Common Symptoms</b>	<b>What You Experience</b>	<b>Possible Solutions</b>
Stuck-on Pixels	LCD screen has bright spots	<ul style="list-style-type: none"><li>• Cycle power On-Off.</li><li>• Pixel that is permanently off is a natural defect that can occur in LCD technology.</li><li>• For more information on Dell Display Quality and PixelPolicy, see Dell Support site at: <a href="http://www.dell.com/support/monitors">http://www.dell.com/support/monitors</a>.</li></ul>
Brightness Problems	Picture too dim or too bright	<ul style="list-style-type: none"><li>• Reset the display to factory settings.</li><li>• Adjust brightness &amp; contrast controls via OSD.</li></ul>
Audio problem	No Audio	<ul style="list-style-type: none"><li>• Check PC setting if the playback is correctly selected.</li><li>• Checking other video cables.</li><li>• Ensure that the Speaker is enabled via OSD</li></ul>
Geometric Distortion	Screen not centered correctly	<ul style="list-style-type: none"><li>• Reset the display to factory settings.</li></ul>
Synchronization Problems	Screen is scrambled or appears torn	<ul style="list-style-type: none"><li>• Reset the display to factory settings.</li><li>• Perform display self-test feature check to determine if the scrambled screen appears in self-test mode.</li><li>• Check for bent or broken pins in the video cable connector.</li><li>• Restart the computer in safe mode.</li></ul>
Safety Related Issues	Visible signs of smoke or sparks	<ul style="list-style-type: none"><li>• Do not perform any troubleshooting steps.</li><li>• Contact Dell immediately.</li></ul>
Intermittent Problems	Display malfunctions on & off	<ul style="list-style-type: none"><li>• Ensure that the video cable connecting the display to the computer is connected properly and is secure.</li><li>• Reset the display to factory settings.</li><li>• Perform display self-test feature check to determine if the intermittent problem occurs in self-test mode.</li></ul>

## 5. Trouble Shooting Instructions

<b>Common Symptoms</b>	<b>What You Experience</b>	<b>Possible Solutions</b>
Missing Color	Picture missing color	<ul style="list-style-type: none"><li>• Perform display self-test.</li><li>• Ensure that the video cable connecting the display to the computer is connected properly and is secure.</li><li>• Check for bent or broken pins in the video cable connector.</li></ul>
Wrong Color	Picture color not good	<ul style="list-style-type: none"><li>• Change the settings of the Preset Modes in the Color menu OSD depending on the application.</li><li>• Adjust R/G/B value under Custom. Color in Color menu OSD.</li><li>• Change the Input Color Format to PC RGB or YCbCr in the Color menu OSD.</li><li>• Run the built-in diagnostics.</li></ul>
Image retention from a static image left on the display for a long period of time	Faint shadow from the static image displayed appears on the screen	<ul style="list-style-type: none"><li>• Set the screen to turn off after a few minutes of screen idle time. These can be adjusted in Windows Power Options or Mac Energy Saver setting.</li><li>• Alternatively, use a dynamically changing screensaver.</li></ul>
Touchscreen non-responsive	Display cannot wake on touch	<ul style="list-style-type: none"><li>• Ensure Wake On Touch is enabled via OSD. Wake On Touch is default off.</li></ul>

### Product specific problems

<b>Specific Symptoms</b>	<b>What You Experience</b>	<b>Possible Solutions</b>
Screen image is too small	Image is centered on screen, but does not fill entire viewing area	<ul style="list-style-type: none"><li>• Check the Aspect Ratio setting in the Display menu OSD.</li><li>• Reset the display to factory settings.</li></ul>

## 5. Trouble Shooting Instructions

<b>Specific Symptoms</b>	<b>What You Experience</b>	<b>Possible Solutions</b>
Intermittent charging when using USB Type-C connection to computer, laptop, and so on	Intermittent charging	<ul style="list-style-type: none"><li>• Check if the maximum power consumption of device is over 90 W.</li><li>• Ensure that you use only Dell approved adapter or the adapter that comes with the product.</li><li>• Ensure that the USB Type-C cable is not damaged.</li></ul>

## Touchscreen problems

<b>Specific Symptoms</b>	<b>What You Experience</b>	<b>Possible Solutions</b>
Touch report error	Touch function miss alignment or no touch function	<ul style="list-style-type: none"><li>• Use the Dell provided USB cable to connect your computer.</li><li>• Make sure the power cable has a ground pin.</li><li>• Unplug and replug the power cable to allow initialization of the touch module.</li><li>• Make sure computer supports USB 2.0 or later.</li><li>• If the display cannot be detected by the computer, power off/on the monitor or unplug and replug the USB cable.</li></ul>
Touchscreen non-responsive in standby mode	Cannot wake up display and computer by using touch in standby mode	<ul style="list-style-type: none"><li>• Access Device Manager, expand HID Interface Device under Human Device.</li><li>• Right click HID- compliant device, click Properties and select the check-box to allow the device to wake the computer.</li><li>• Check Display OSD 'Wake on touch' setting is enabled.</li></ul>



## 5. Trouble Shooting Instructions

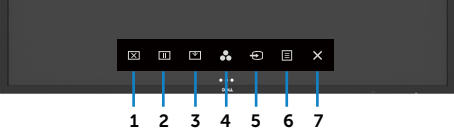
### Universal Serial Bus (USB) specific problems

<b>Specific Symptoms</b>	<b>What You Experience</b>	<b>Possible Solutions</b>
USB interface is not working	USB peripherals are not working	<ul style="list-style-type: none"><li>• Check that your display is turned ON.</li><li>• Reconnect the upstream cable to your computer.</li><li>• Reconnect the USB peripherals (downstream connector).</li><li>• Switch off and then turn on the display again.</li><li>• Reboot the computer.</li><li>• Some USB devices like external portable HDD require higher electric current; connect the device directly to the computer system.</li></ul>
SuperSpeed USB 3.1 interface is slow.	SuperSpeed USB 3.1 peripherals working slowly or not working at all	<ul style="list-style-type: none"><li>• Check that your computer is USB 3.1-capable.</li><li>• Some computers have USB 3.1, USB 3.0, USB 2.0, and USB 1.1 ports. Ensure that the correct USB port is used.</li><li>• Reconnect the upstream cable to your computer.</li><li>• Reconnect the USB peripherals (downstream connector).</li><li>• Reboot the computer.</li></ul>
Wireless USB peripherals stop working when a USB 3.1 device is plugged in	Wireless USB peripherals responding slowly or only working as the distance between itself and its receiver decreases	<ul style="list-style-type: none"><li>• Increase the distance between the USB 3.1 peripherals and the wireless USB receiver.</li><li>• Position your wireless USB receiver as close as possible to the wireless USB peripherals.</li><li>• Use a USB-extender cable to position the wireless USB receiver as far away as possible from the USB 3.1 port.</li></ul>
USB is not working	No USB functionalities	<ul style="list-style-type: none"><li>• Refer to input source and USB pairing table.</li></ul>

## 5. Trouble Shooting Instructions

### Ethernet problems

Specific Symptoms	What You Experience	Possible Solutions
Ethernet not working	Dell Web Management for Displays Webpage control is not working	<ul style="list-style-type: none"><li>• Ensure that the Network cable connecting the Display is properly secured.</li><li>• Touch the icon 5 on the screen for 4 seconds to turn on , A network icon  appears and is shown on the center for 4 seconds .</li><li>• Touch the icon 5 on the front panel for 4 seconds to turn off, A network icon  appears and is shown on the center for 4 seconds.</li></ul>



The diagram shows a horizontal touch-sensitive control bar with seven numbered icons (1-7) and their corresponding symbols: 1 (power), 2 (refresh), 3 (home), 4 (network), 5 (network), 6 (network), 7 (close).