
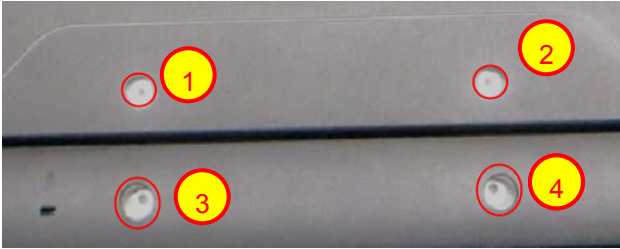
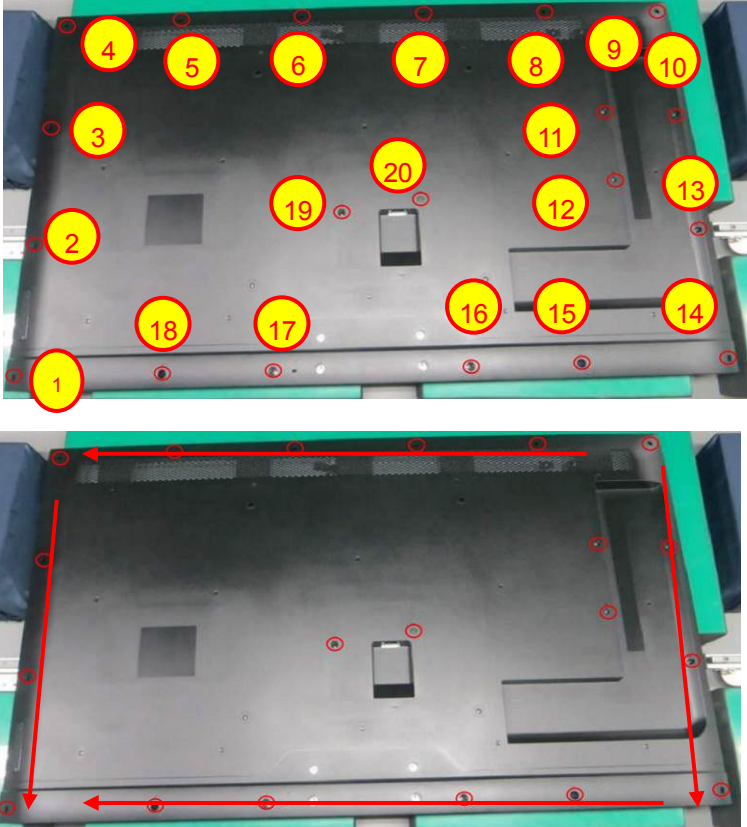
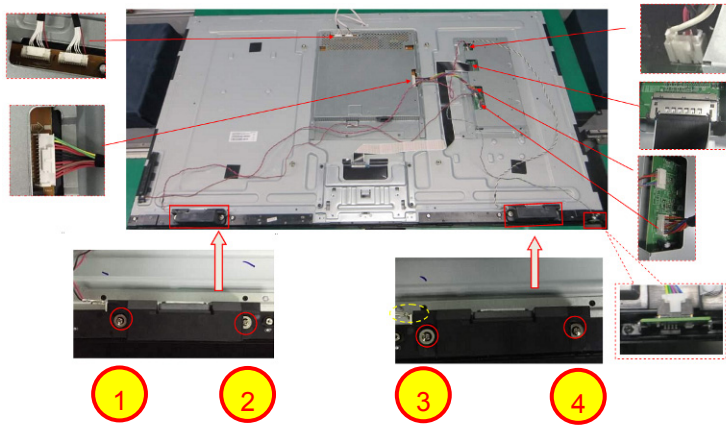


# Mechanical Instruction

## 1. Disassembly Procedures:

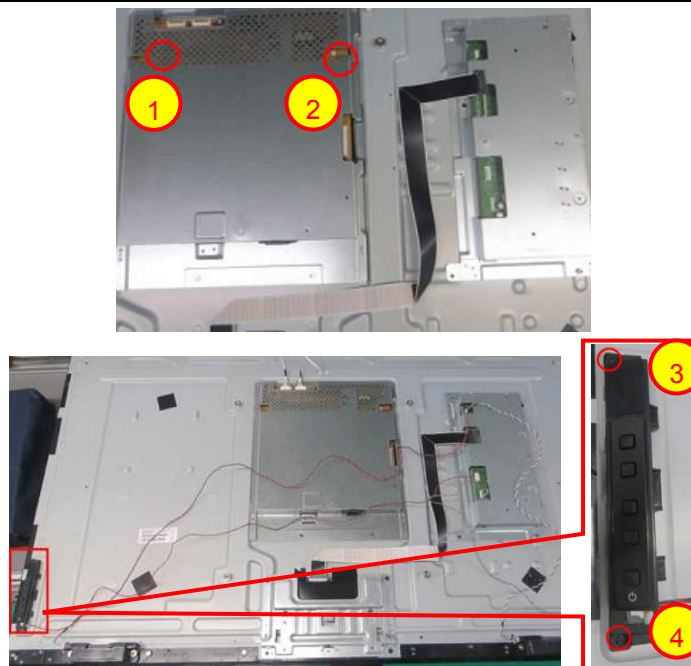
Step	Figure	Remark
<p><b>S1. Before disassemble</b></p>		<p>Turn off power, Unplug external cables from product</p>
<p><b>S2. Remove the cover hinge</b></p>		<p>Use a Philips-head screwdriver to remove 4 screws for remove the cover hinge. (No.1~4 screw size=M4x14; Torque=12±2kgf.cm)</p>
<p><b>S3. Remove the REAR COVER</b></p>		<p>Use a Philips-head screwdriver to remove 20 screws for remove the Rear Cover. (No.1~20 screw size=M3x6; Torque=4±1kgf.cm)</p> <p>Use Penknife to separate the bezel and rear cover follow the arrows in sequence, then you can take out rear cover.</p>

**S4. Disconnect all of the cable and remove the speakers**



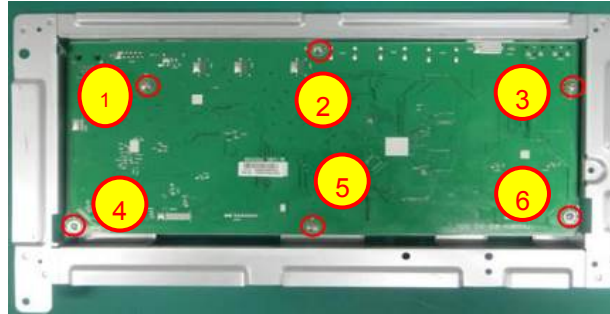
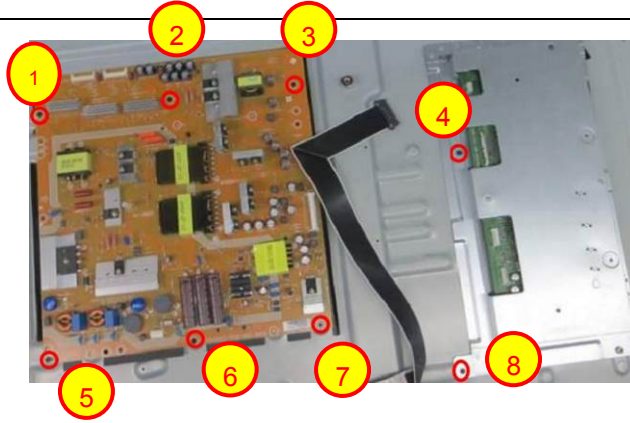
1. Disconnect all of the pins and remove the speakers.
2. Use a Philips-head screwdriver to remove 4 screws for remove the Speakers  
(No.1~4 screw size=Q4x10;  
Torque=8±1kgf.cm)

**S5. Remove the BKT and the key board**



- Use a Philips-head screwdriver to remove 4 screws for remove the BKT and Key board  
(No.1~4 screw size=Q4x10  
Torque= 4±1kgf.cm)

**S6. Remove the Main & Power Board**



Use a Philips-head screwdriver to remove 8 screws for remove the Power board.

(No.1~8 screw size=P3x4;

Torque=4±1kgf.cm)

Use a Philips-head screwdriver to remove 6 screws for remove the Main board.

(No.1~6 screw size=D3x6

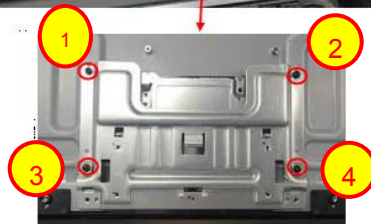
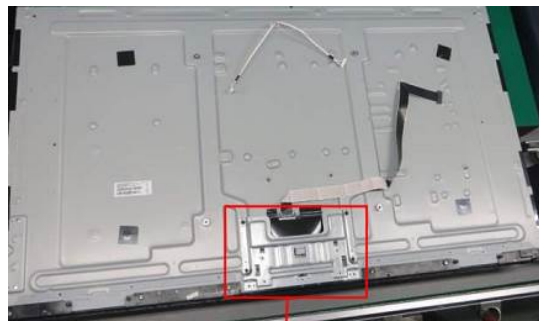
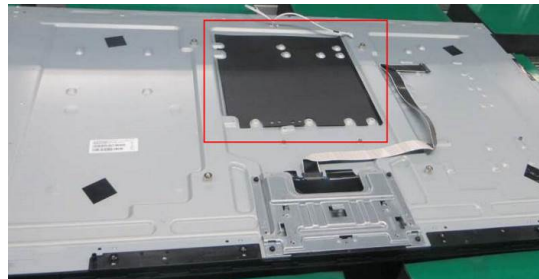
Torque=6±1kgf.cm )

Use a hex screwdriver to remove 4 screws for remove the Main board.

(No.1~4 Hex-screw

Torque=4.5±0.5kgf.cm)

**S7. Remove the Mylar and remove the screws to remove the BKT stand**

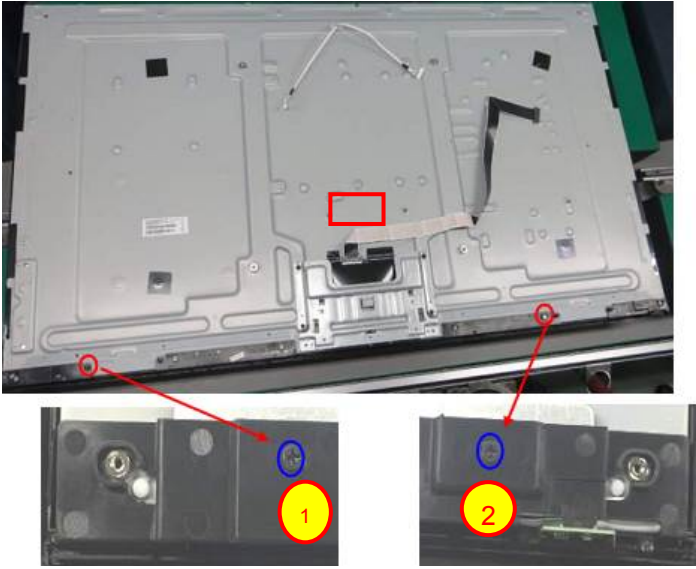
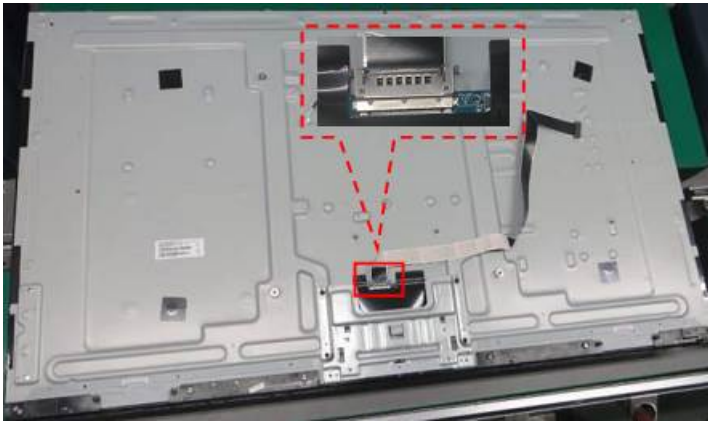
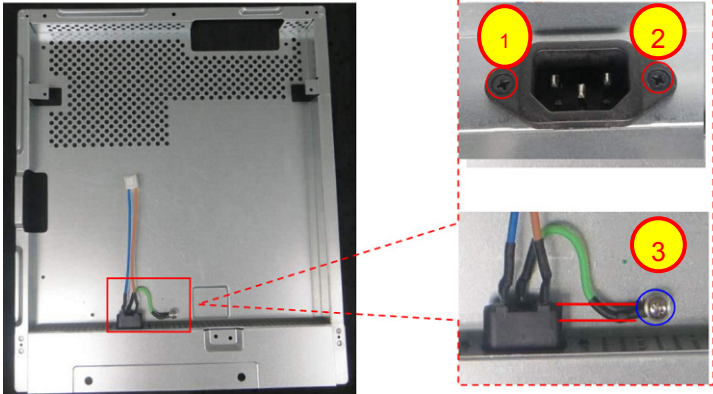
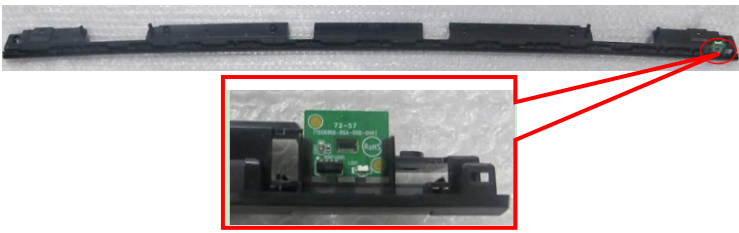


Use finger to Remove the Mylar

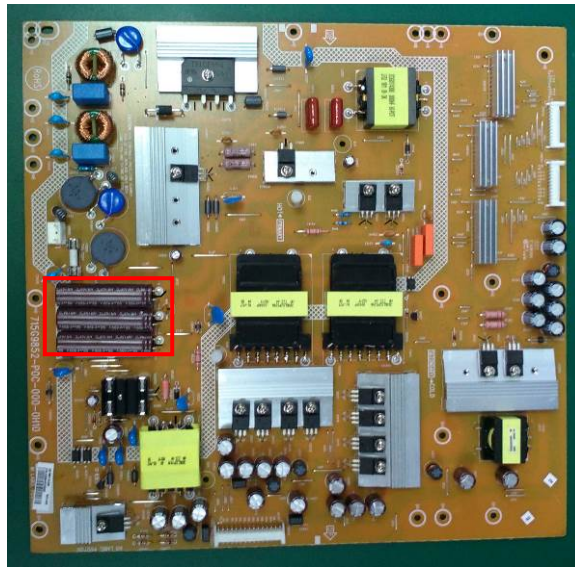
Use a Philips-head screwdriver to remove 4 screws for remove the BKT stand

(No.1~4 screw size=M4x8

Torque=6±1kgf.cm )

<p><b>S8. Remove the DECO bezel</b></p>		<p>Use a Philips-head screwdriver to remove 2 screws for remove DECO Bezel (No.1~2 screw size=P3x4; Torque=4±1kgf.cm )</p>
<p><b>S9. The Panel</b></p>		<p>Disconnect the pin</p>
<p><b>S10. Remove the screw to remove the AC SOCKET ASS'Y</b></p>		<p>Use a Philips-head screwdriver to remove 4 screws for remove the BKT stand (No.1~2 screw size=M3x6 Torque=4±1kgf.cm No.3 screw size=M4x6 Torque=12±2kgf.cm)</p>
<p><b>S11. The Deco bezel and the IR board</b></p>		<p>The IR board</p>

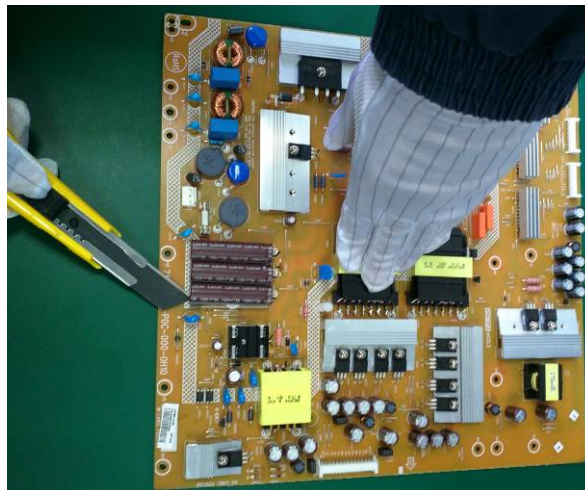
S12.Remove capacitors



Remove electrolyte capacitors (red mark) from printed circuit boards



Take out bulk cap. pin solder with soldering iron and absorber



Lift the bulk cap. up and away from the PCB

## 2 Product material information

The following substances, preparations, or components should be disposed of or recovered separately from other WEEE in compliance with Article 4 of EU Council Directive 75/442/EEC.

Capacitors / condensers (containing PCB/PCT)	No used
Mercury containing components	No used
Batteries	Product has LR03 batteries
Printed circuit boards (with a surface greater than 10 square cm)	Product has printed circuit boards (with a surface greater than 10 square cm)
Component contain toner, ink and liquids	No used
Plastic containing BFR	No used
Component and waste contain asbestos	No used
CRT	No used
Component contain CFC, HCFC, HFC and HC	No used
Gas discharge lamps	No used
LCD display > 100 cm <sup>2</sup>	Product has an LCD greater than 100 cm <sup>2</sup>
External electric cable	Product has external cables
Component contain refractory ceramic fibers	No used
Component contain radio-active substances	No used
Electrolyte capacitors (height > 25mm, diameter > 25mm)	Product has electrolyte capacitors (height > 25mm, diameter > 25mm)

## 3. Tools Required

List the type and size of the tools that would typically can be used to disassemble the product to a point where components and materials requiring selective treatment can be removed.

Tool Description:

- Phillip-head Screwdriver
- Hexagonal Screwdriver
- Penknife
- Soldering iron and absorber