

◀◀ Go to contents page

### 1. Disassembly Procedures:

Remove 6pcs carton locks, then use a proper tool to open the carton, and then uplift the paper-box slowly. Tearing off the caution techsheet. Remove EPS-Top with PC box, QSG and accessories PE bag( CD, battery, 3pcs wire saddle, 2pcs stylus, Stylus holder, remote control, remote control holder, EU+USA cable, VGA cable, power cable, HDMI cable, DP cable and USB cables).

S1



Take out the whole monitor from the EPS-bottom. Remove the PE bag from top to bottom, and put the monitor on ESD protection foam.

S2



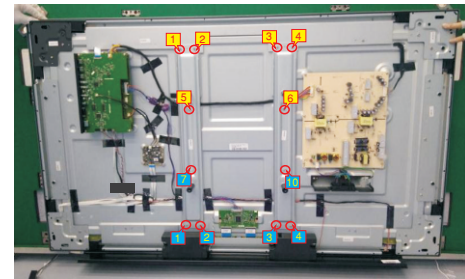
S3

Use a screwdriver to remove 4pcs screws for releasing the handles. (Torque:16±1kgf). Remove 23pcs screws for unlocking the rear cover(Torque: 3.8±0.3kgf).



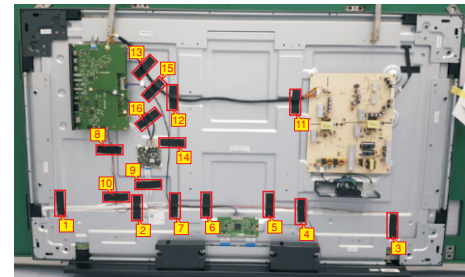
S4

Remove the 2pcs rubbers and rear cover, then use a screwdriver to remove 12pcs screws for releasing 2pcs middle bracket. (Torque:7±0.3kgf)



S5

Remove 16pcs black tapes for releasing the cables as the picture below shown.

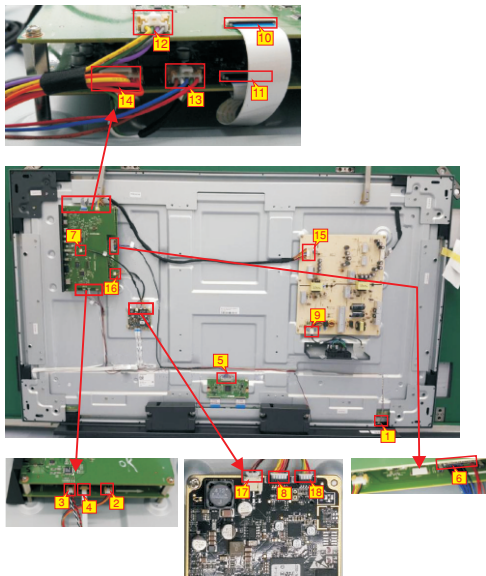


Disconnect IR cable from the connectors of IR board with main board(Figure 1~2). Disconnect the speakers' cable from the connector of the main board(Figure 3). Disconnect function key cable from the connector of the main board(Figure 4).

Disconnect FFC cable from connectors of T-COB board and main board(Figure 5~6). Disconnect touch&USB cable from the connectors of touch board with USB board(Figure 7~8). Disconnect AC cable from the connector of the power board(Figure 9). Disconnect FFC cable from connectors of main board and USB board(Figure10~11). Disconnect power cable from connectors of power board, main board and USB board(Figure12~15). Disconnect touch& main cable from the connectors of touch board and main board(Figure 16~18). Please refer to the picture in the next page.

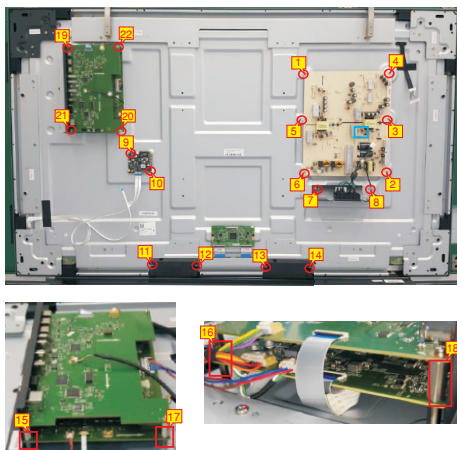
S6

◀◀ Go to contents page



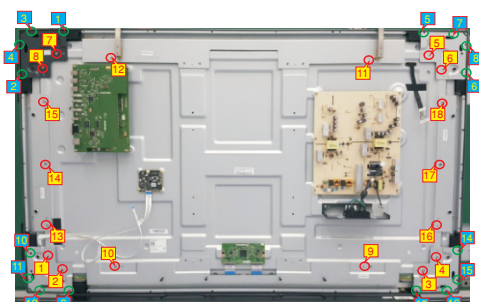
Use a screwdriver to remove 2pcs screws for unlocking IO stand , remove 4pcs screws for unlocking the input connectors, remove 2pcs screws for unlocking the touch board, remove 4pcs screws for unlocking two speakers, remove 4pcs screws for unlocking the main board, remove 4pcs screws for unlocking USB board, remove 8pcs screws for unlocking AC stand with power board.

S7



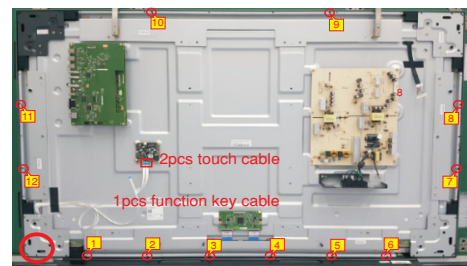
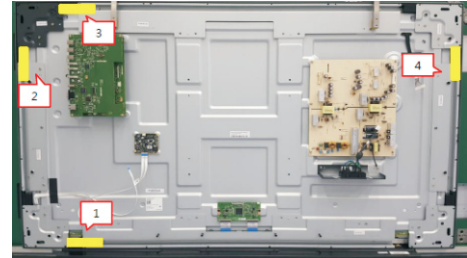
Use a screwdriver to remove 34pcs(18pcs+16pcs) screws for unlocking the iron and bracket.

S8



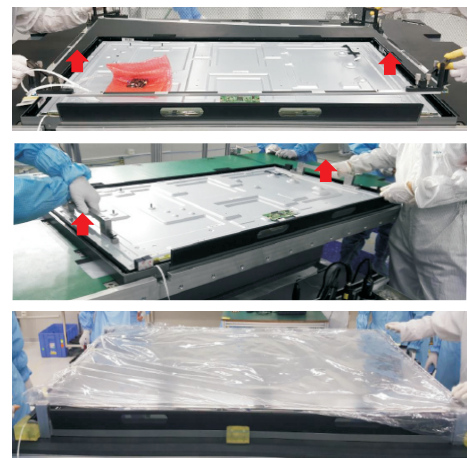
S9

Remove the 4pcs conductive tapes and 8pcs rubbers. Use a screwdriver to remove 12pcs screws for unlocking the side iron. (Torque: 3.8kgf±0.3) Remove 1pcs PVC tape. Remove the main board, touch board with cables and power board.



Lift up the assembled ED unit. Lift up the panel module with a proper tool and put it on a protective cushion. Lift up the glass with a tool and put it on a protector.

S10



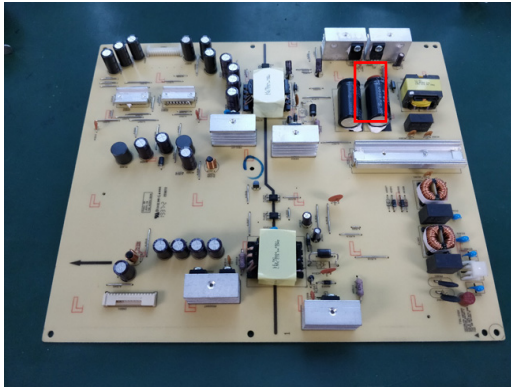
Use a screwdriver to remove 2pcs screws for unlocking the function key board, to remove 2pcs screws for unlocking the IR board(Torque: 2±0.2kgf). Use a screwdriver to remove 24pcs(8pcs+16pcs) screws for unlocking the angle irons with front frames.

S11

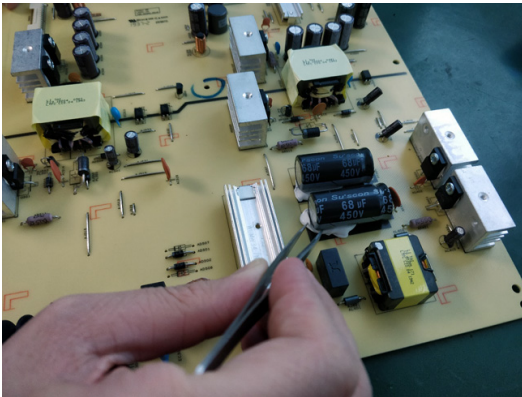


◀◀ Go to contents page

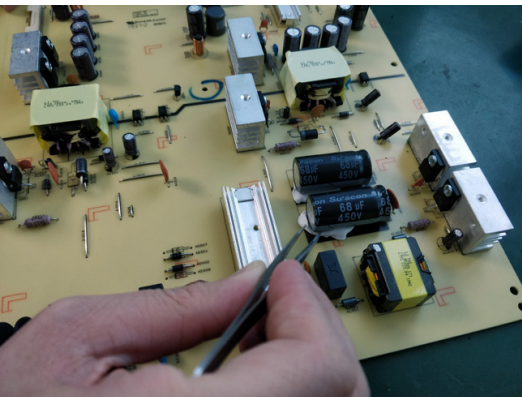
**S12** Remove electrolyte capacitors (red mark) from printed circuit boards



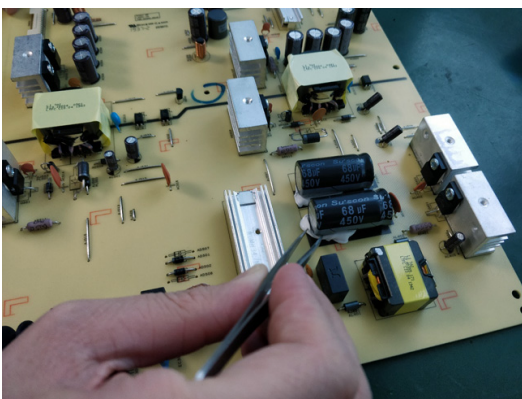
S12-1 Cut the glue between bulk cap. and PCB with a knife



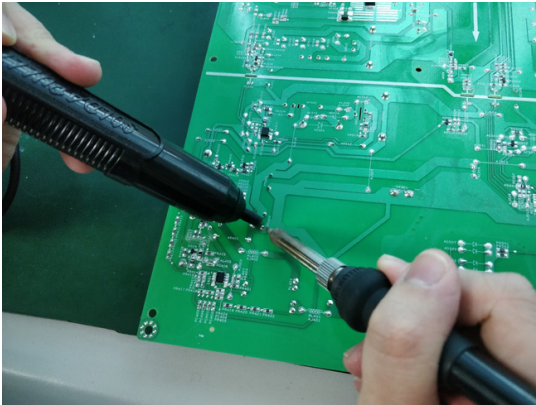
S12-2 Ensure cutting path within the glue, don't touch bulk cap. or PCB



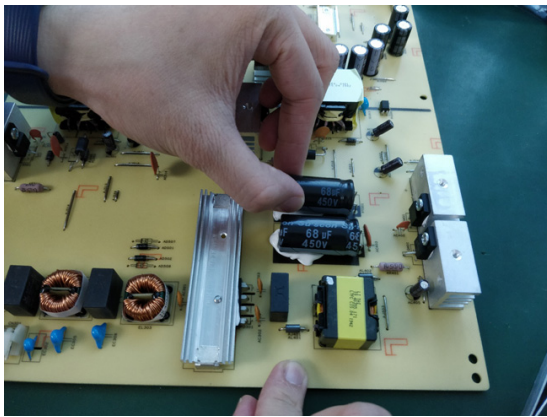
S12-3 Cut into the bottom of bulk cap. and pull it up carefully



S12-4 Take out bulk cap. pin solder with soldering iron and absorber



S12-5 Lift the bulk cap. up and away from the PCB



◀◀ [Go to contents page](#)

## 2. Product material information

The following substances, preparations, or components should be disposed of or recovered separately from other WEEE in compliance with Article 4 of EU Council Directive 75/442/EEC.

Capacitors / condensers (containing PCB/PCT)	No used
Mercury containing components	No used
Batteries	No used
Printed circuit boards (with a surface greater than 10 square cm)	Product has printed circuit boards (with a surface greater than 10 square cm)
Component contain toner, ink and liquids	No used
Plastic containing BFR	No used
Component and waste contain asbestos	No used
CRT	No used
Component contain CFC, HCFC, HFC and HC	No used
Gas discharge lamps	No used
LCD display > 100 cm <sup>2</sup>	Product has an LCD greater than 100 cm <sup>2</sup>
External electric cable	Product has external cables
Component contain refractory ceramic fibers	No used
Component contain radio-active substances	No used
Electrolyte capacitors (height > 25mm, diameter > 25mm)	Product has electrolyte capacitors (height > 25mm, diameter > 25mm)

## 3. Tools Required

List the type and size of the tools that would typically can be used to disassemble the product to a point where components and materials requiring selective treatment can be removed.

Tool Description:

- Screwdriver (Phillip head) #1
- Screwdriver (Phillip head) #2
- Penknife
- Soldering iron and absorber