

1. Disassembly Procedures:

S1 Open the carton with a proper tool.



Take out all accessories including label(optional), QSG, DP cable, USB Type-C cable, USB Type-A to Type-B upstream cable, power cable, manual and other packing materials from the carton. (Note: It depends on whether users returning the accessories)

S2



S3

Take out the stand, base and paper top from the carton, then take out the monitor from the carton.



S4

Take out the monitor from EPE-bag and put the LCD monitor on a protective cushion.



S5

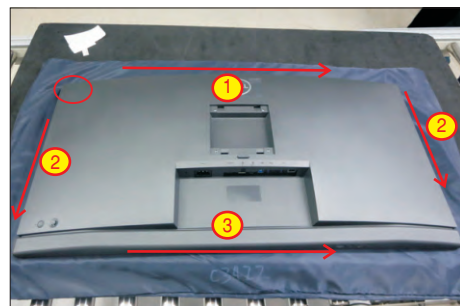
Use a Philips-head screwdriver to remove 4pcs screws for unlocking rear cover.

(No.1~4 screw size=M4x11; Torque=11±1kgfxcM)



Wedge your fingers between rear cover and the middle bezel on the corners of the top side of the monitor to release the rear cover, then use one hand to press the middle bezel, the other hand to pull up carefully the rear cover in order of arrow preference for unlocking mechanisms of rear cover.

S6



Lift the rear cover up carefully. Disconnect the joystick key cable and two USB cables from the connectors of the board, and then remove the rear cover and put it aside for later disassembling.

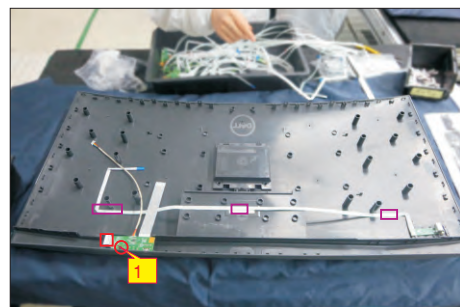
S7



Use a Philips-head screwdriver to remove 1pcs screw for unlocking the USB board, then tear off all the tapes and release the USB power cable and joystick cable.

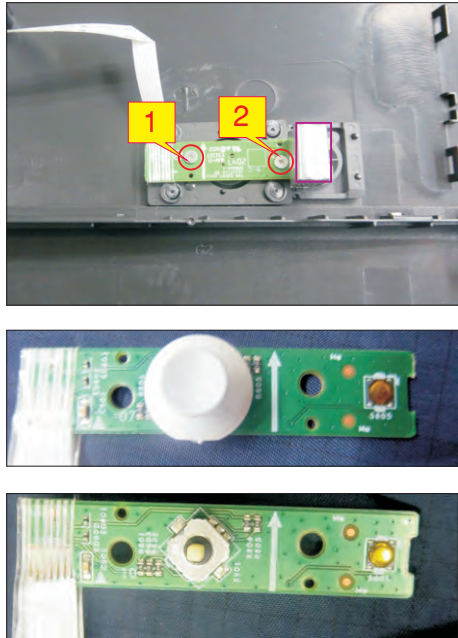
S8

(No.1 screw size=M3x6, Torque=4±0.5kgfxcM)



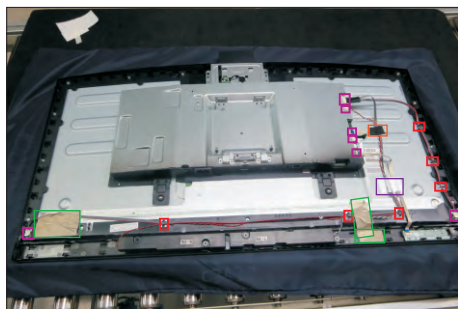
S9

Use a Philips-head screwdriver to remove 2pcs screws for unlocking the joystick board, then release the Joystick board from the hook of the rear cover.
 (No.1~2 screw size=M2x2.4, Torque=0.8~1kgfxcM)



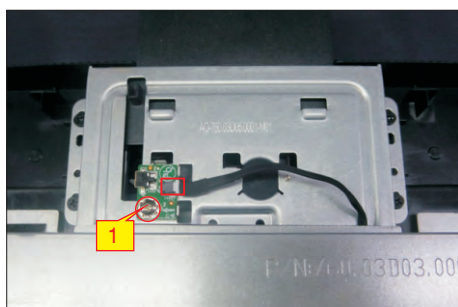
Tear off 1pcs acetate tapes and 1pcs aluminum foils and 3pcs conductive tapes for releasing the cables. Disconnect the panel lamp cable, LED cable, touch cable, camera connective cable and speakers' cable from the connectors of the board, then release the panel lamp cables from the hooks of the middle bezel.

S10



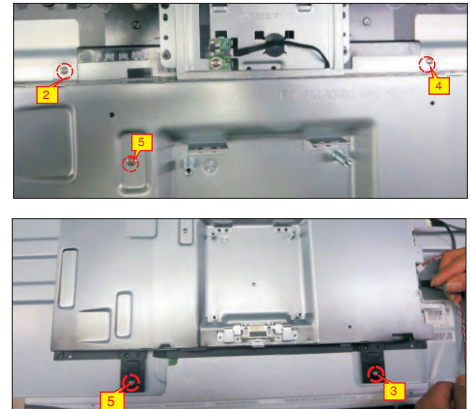
Disconnect the camera cable from away the camera board, then use a Philips-head screwdriver to remove one screw for unlocking camera board with the camera module.
 (No.1 screw size=M3x3, Torque=5±0.5 kgfxcM)

S11



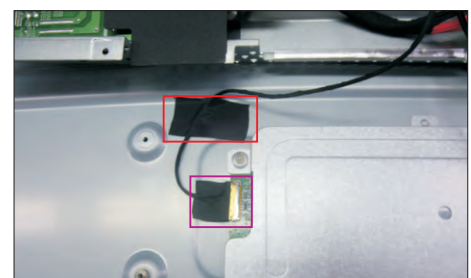
S12

Use a Philips-head screwdriver to remove 4pcs screws for unlocking bracket with panel, to remove one screw for unlocking the heat-sink.
 (No.1~5 screw size=M3x3, Torque=5±0.5 kgfxcM)



Lift up the bracket chassis module and tear off the 1pcs acetate tape, then disconnect the EDP cable away from the connector of the panel module, then put the bracket chassis module on a cushion.

S13



Use a Philips-head screwdriver to remove 4pcs screws for unlocking the speakers with middle bezel, then release the speakers' cable from the hooks of the middle bezel, and then release the two speakers from the probers of the middle bezel.
 (No.1~4 screw size=M3x6, Torque=4±0.5 kgfxcM)

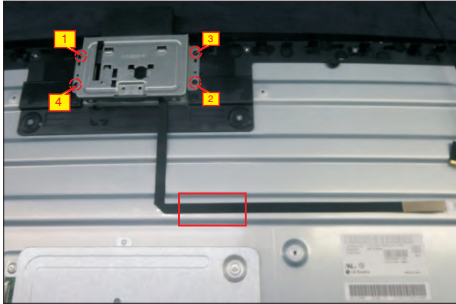
S14



S15

Tear off tapes for releasing the camera connective cable, then use a Philips-head screwdriver to remove 4pcs screws for unlocking the camera module, and then remove assembled camera unit and put it aside for later disassembling.

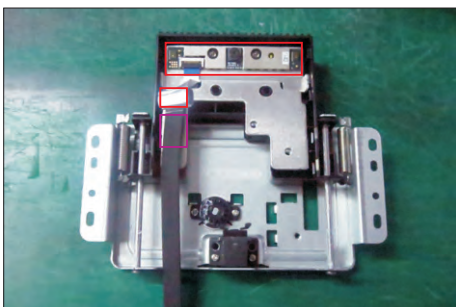
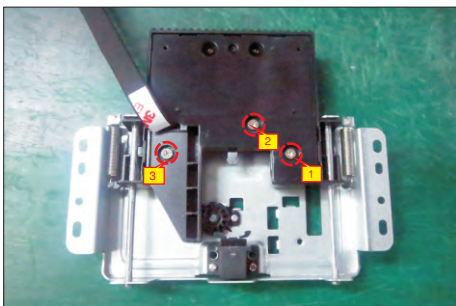
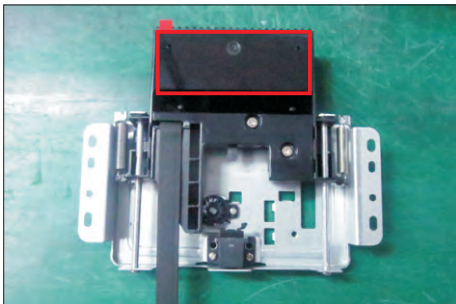
(No.1~4 Screw size= M3x4, Torque=3.5±0.5kgfxcM)



S16

Tear off the camera glass and tape of the camera connective cable, then use a Philips-head screwdriver to remove 3pcs screws for unlocking the rear cover with front cover. Remove the rear cover, and then tear off the conductive foam and tape for release the cable, then tear off the camera from the front cover.

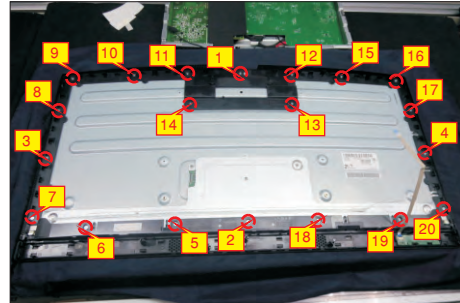
(No.1~3 screw size=M3x5, Torque=3±0.5kgfxcM)



S17

Use a Philips-head screwdriver to remove 20pcs screws for unlocking the middle bezel unit with the panel module.

(No.1~20 screw size=M3x4, Torque=5±0.5kgfxcM)



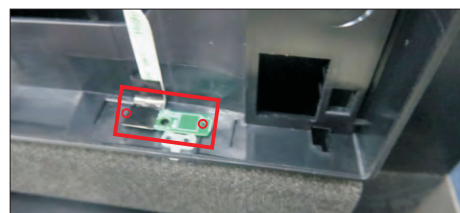
S18

Release the touch board from the middle bezel by tearing off the tape, and then lift up the LED cable by tearing off 3pcs tapes on the back of cable. Take away the middle bezel and put it on a cushion foam.



S19

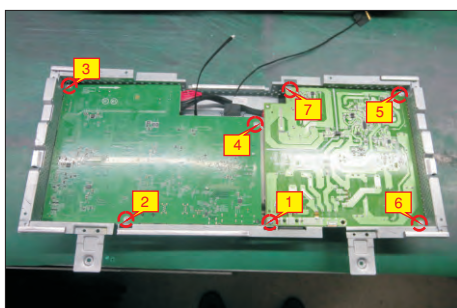
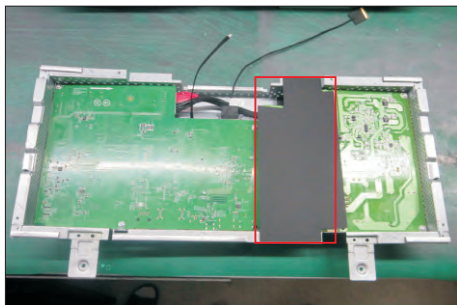
Put the middle bezel with LED board into a fixture, then tear off the mylar tape for releasing the LED board.



S20

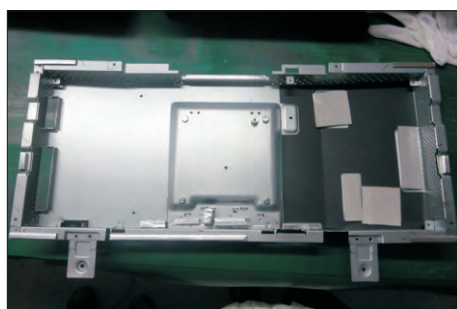
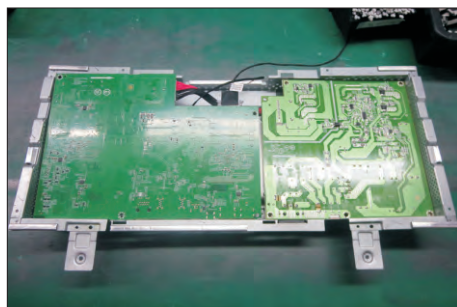
Remove the Mylar tape from the brackets by tearing off the tape, then use a Philips-head screwdriver to remove 7pcs screws for interface board and power board.

(No.1 screw size=M4x8, Torque=7±1kgfcm;
No.2~7 screw size=M3x7.5, Torque=7±1kgfcm)



S21

Remove the power board and interface board from the bracket chassis module carefully, and then disconnect all of the cables.

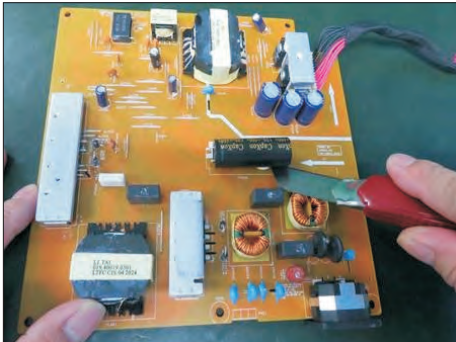


S22

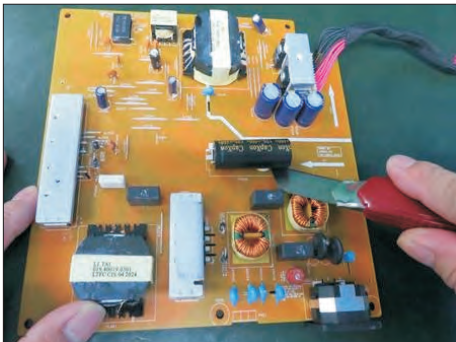
Remove electrolyte capacitors (red mark) from printed circuit boards.



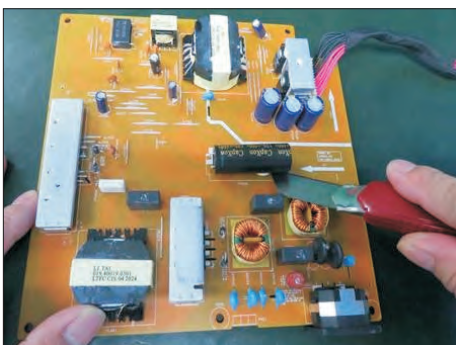
S22-1 Cut the glue between bulk cap. and PCB with a knife.



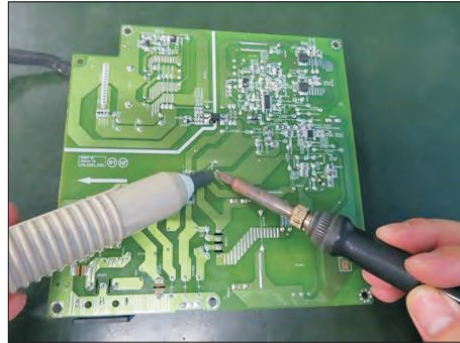
S22-2 Ensure cutting path within the glue, don't touch bulk cap. or PCB.



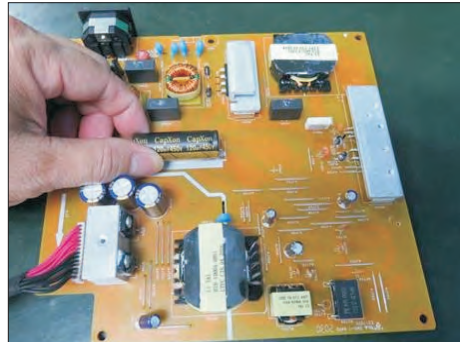
S22-3 Cut into the bottom of bulk cap. and pullit up carefully.



S22-4 Take out bulk cap. pin solder with soldering iron and absorber.



S22-5 Lift the bulk cap. up and away from the PCB.



2. Product material information

The following substances, preparations, or components should be disposed of or recovered separately from other WEEE in compliance with Article 4 of EU Council Directive 75/442/EEC.

Capacitors / condensers (containing PCB/PCT)	No used
Mercury containing components	No used
Batteries	No used
Printed circuit boards (with a surface greater than 10 square cm)	Product has printed circuit boards (with a surface greater than 10 square cm)
Component contain toner, ink and liquids	No used
Plastic containing BFR	No used
Component and waste contain asbestos	No used
CRT	No used
Component contain CFC, HCFC, HFC and HC	No used
Gas discharge lamps	No used
LCD display > 100 cm ²	Product has an LCD greater than 100 cm ²
External electric cable	Product has external cables
Component contain refractory ceramic fibers	No used
Component contain radio-active substances	No used
Electrolyte capacitors (height > 25mm, diameter > 25mm)	Product has electrolyte capacitors (height > 25mm, diameter > 25mm)

3. Tools Required

List the type and size of the tools that would typically can be used to disassemble the product to a point where components and materials requiring selective treatment can be removed.

Tool Description:

- Screwdriver (Phillip head) #1
- Screwdriver (Phillip head) #2
- Penknife
- Soldering iron and absorber