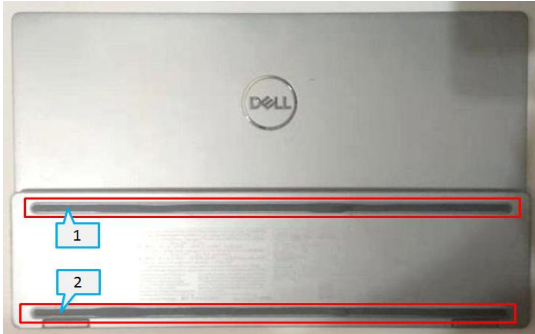


## Chapter 8-TEARDOWN INSTRUCTION

S1

### 1. Tear the rubber

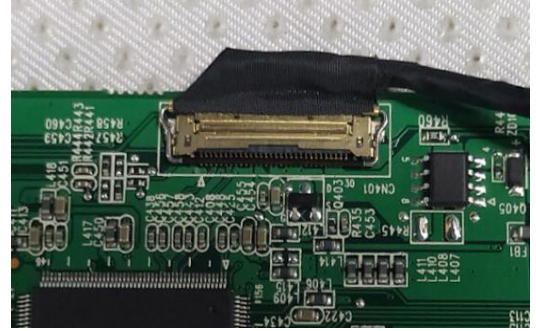
a: Tear off the rubber attached to the lower cover of the bracket "1~2"



S4

### 4. Separate mainboard

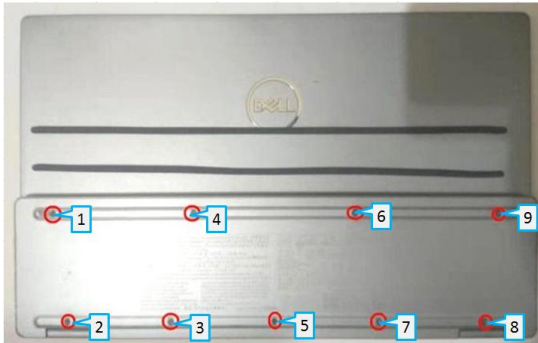
a: Tack out the mainboard from the upper cover of the base  
b: Remove the cable hook, pull out the cable;



S2

### 2. Remove the base screws

a: Use the electric screwdriver and remove the base screws at positions "1~9"  
b: Torque of electric screwdriver:  $1.1 \pm 0.1 \text{ kgf.cm}$ , Screwdriver head: star



S5

### 5. Remove the power button and menu button

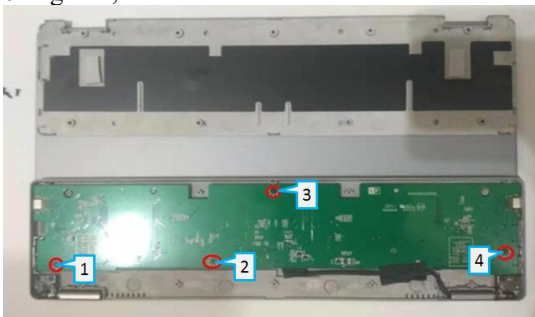
a: Remove the power button and menu button



S3

### 3. Remove the mainboard screws

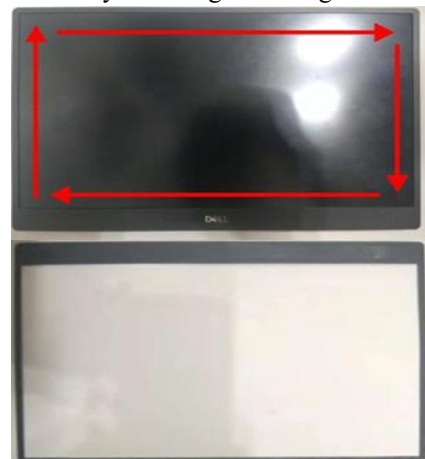
a: Separate the lower cover of the bracket  
b: Take the electric screwdriver and remove the mainboard screws at positions "1~4"  
c: Torque of electric screwdriver:  $1.1 \pm 0.1 \text{ kgf.cm}$ , Screwdriver head: Cross



S6

### 6. Remove the front frame

a: Remove the front frame in sequence with both hands at the same time  
b: Order: sky side → right side → ground side → left side



## DELL C1422H Teardown Instruction

S7

### 7. Tear pull adhesive

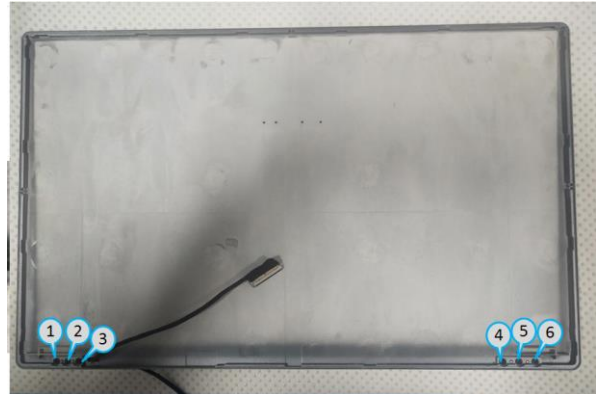
- Tear off the pull adhesive at positions “1~3”  
(Clamp the pull glue with pliers and pull it out)
- Tack out the panel from the back cover



S10

### 10. Remove the Hinge screws

- Take the electric screwdriver and remove the Hinge screws at positions “1~6”
- Torque of electric screwdriver:  $1.1 \pm 0.1 \text{ kgf.cm}$ ,  
Screwdriver head: Cross



S8

### 8. Separate panel

- Remove the cable hook, pull out the cable;



S11

### 11. Take out the cable

- Tack out the cable from the back cover



S9

### 9. Remove the upper cover of base screws

- Take the electric screwdriver and remove the upper cover of base screws at positions “1~6”
- Torque of electric screwdriver:  $1.1 \pm 0.1 \text{ kgf.cm}$ ,  
Screwdriver head: Cross
- Separate the upper cover of the base



## DELL C1422H Teardown Instruction

### 1. Product Material Information

The following substances, preparation, or components should be disposed of or recovered separately from other WEEE in compliance with Article 4 of EU Council Directive 75/422/EEC.

Capacitors / Condensers (containing PCB/PCT)	Not used
Mercury containing components	Not used
Batteries	Not used
Printed circuit boards (with surface greater than 10 square cm)	Product has printed circuit boards (with surface greater than 10 square cm)
Component contain toner, ink and liquids	Not used
Plastic containing BFR	
Component and waste contain asbestos	Not used
CRT	Not used
Component contain CFC, HCFC, HGC and HC	Not used
Gas discharge lamps	Not use
LCD display > 100 cm <sup>2</sup>	Product LCD greater than 100cm <sup>2</sup>
External electric cable	Product has external cables
Component contain refractory ceramic fibers	Not used
Component contains radio-active substances	Not used
Electrolyte capacitors (height > 25mm, diameter >25mm)	Product has electrolyte capacitors (height > 25mm)

### 2. Tools Required

List the type and size of the tools that would typically can be used to disassemble the product to a point where components and materials requiring selective treatment can be removed.

Tool Description:

- Screwdriver (Philip head with  $\Phi 5$  mm &  $\Phi 3$  mm)
- Screwdriver (Hexagonal to remove VGA connectivity)
- Soldering iron
- Knife