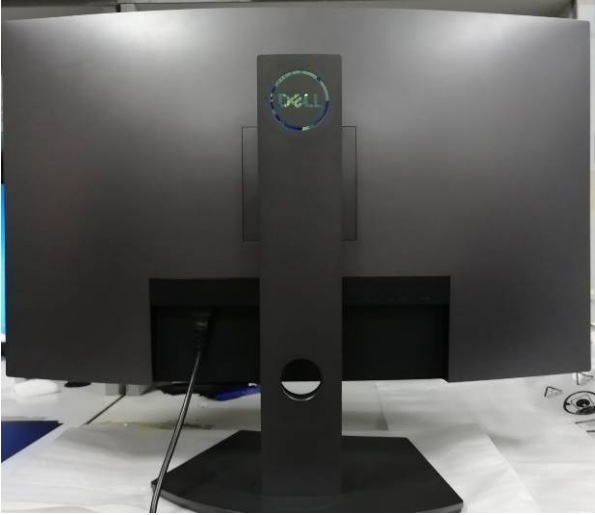


# 1. Disassembly Procedures:

S1 Turn off power

S2 Unplug external cables from product

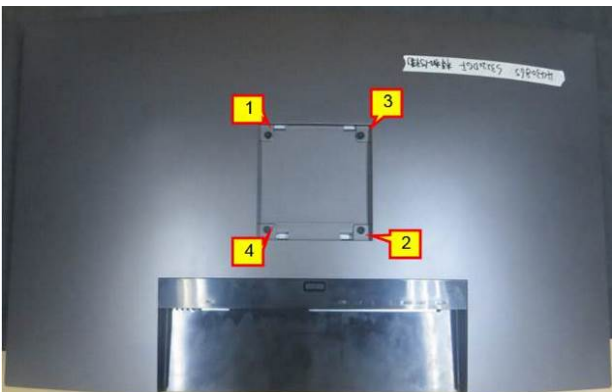


S3 Remove stand from product

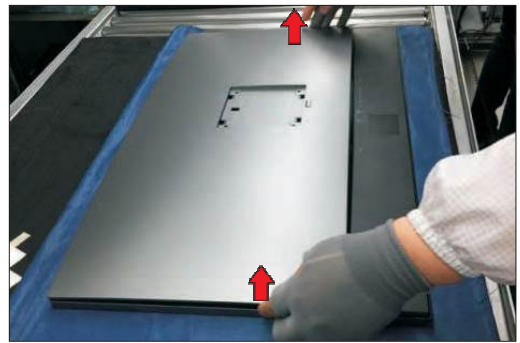
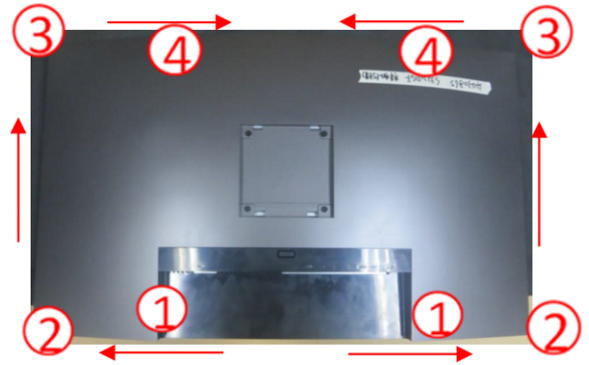


Use a Philips-head screwdriver to remove four screws for unlocking mechanisms.

S4 (No.1~4 screw size=M4x10; Torque: 12±2kgf.cm)



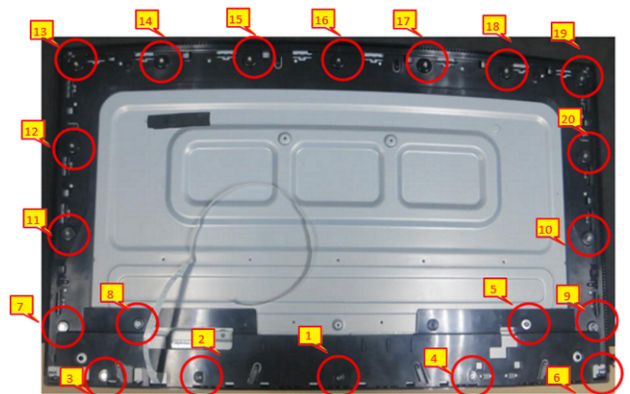
S5 Wedge your fingers between the rear cover and the middle bezel on the corners of the top side of the monitor to release the rear cover, then use one hand to press the middle bezel, the other hand to pull up carefully the rear cover in order of arrow preference for unlocking mechanisms of rear cover



Remove the rear cover and put it on a protective cushion. Use a Philips-head screwdriver to remove 20 screws for unlocking the middle plastic bezel with the whole unit, and then remove the middle plastic bezel carefully.

S6

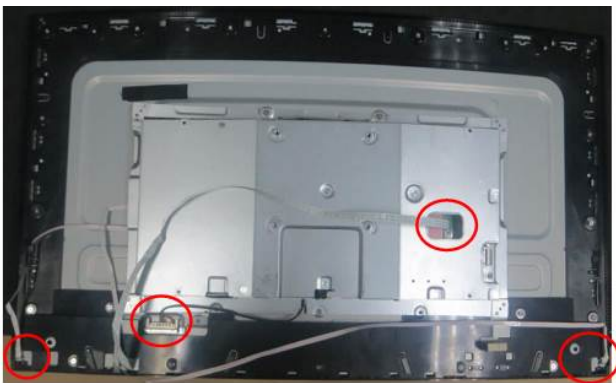
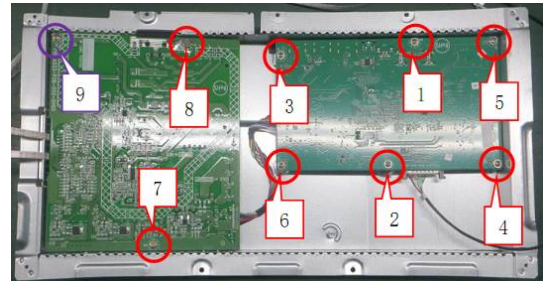
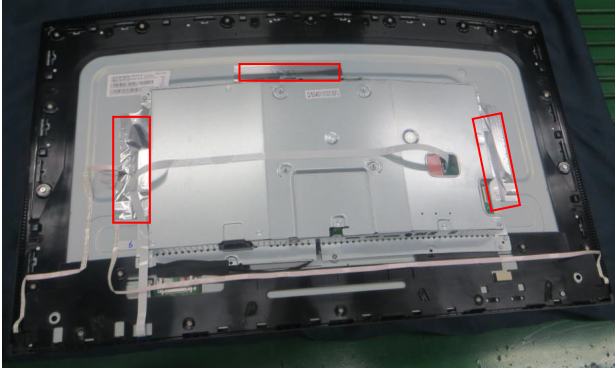
(No.1~20 screw size=M3x4, Torque=3±0.5kgfcm)



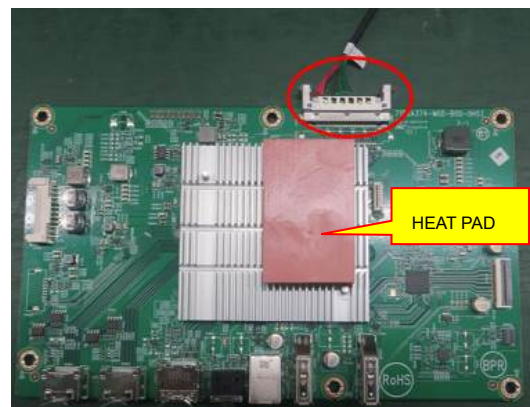
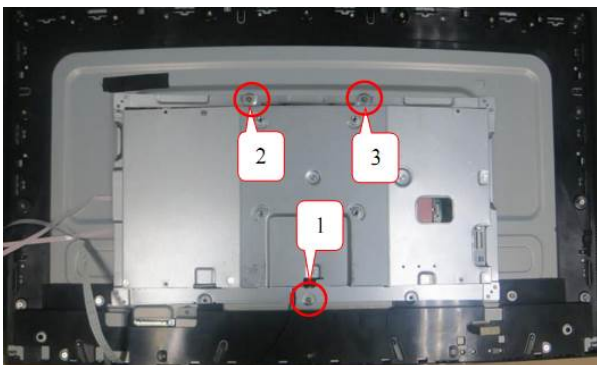
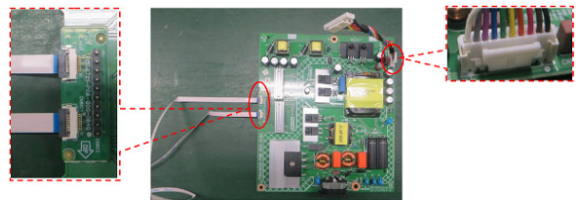
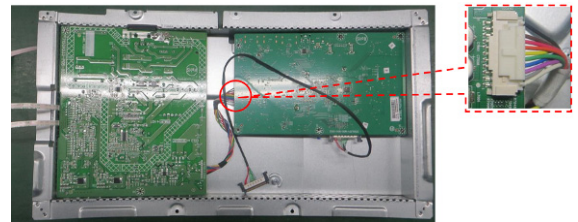
Tear off 3 pieces of aluminum foil. Disconnect the lamp cable from the connectors of the power board and panel module. Use a Philips-head screwdriver to remove 3 screws for unlocking the mainframe

S7

(No.1~3 Screw size=M3x4, Torque: 3±0.5kgf.cm)



S9 Disconnect all of the cables.



S8

Remove the Mylar. Use a Philips-head screwdriver to remove 4 screws for unlocking the main board and the adapter board

(No.1~8 screw size=D3x6, Torque: 6±1kgf.cm)

(No.9 screw size=M4x6, Torque: 6±1kgf.cm)

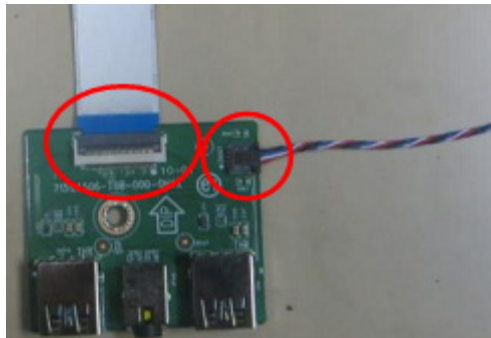
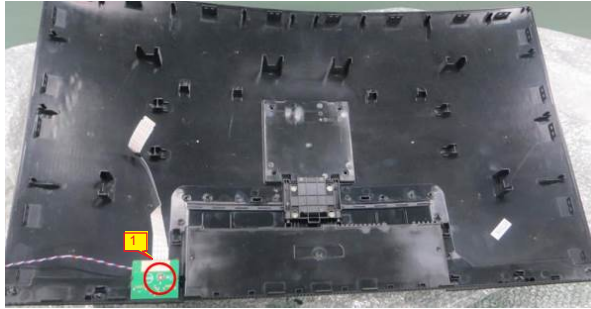
The Mainframe



S10

Use a Philips-head screwdriver to remove 1 screw to remove the USB board. Disconnect the cables of the USB board

(No.1 screw size=M3x6, Torque=4±1kgf.cm)



Use a Philips-head screwdriver to remove 5 screws for unlocking the BEZEL\_BTM and the Panel.

(No.1~5 screw size=M3x3, Torque=3±0.5kgf.cm)

S11



The Panel

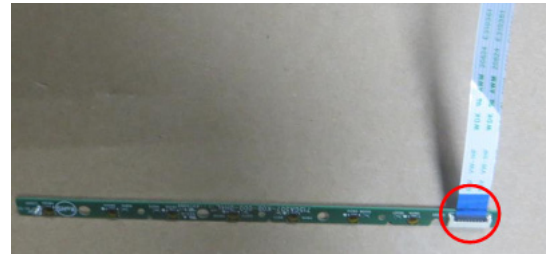
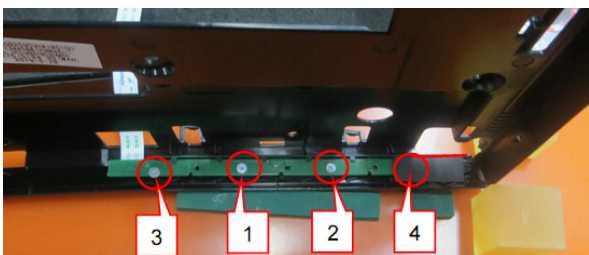


Use a Philips-head screwdriver to remove 4 screws for unlocking the key board and the middle frame.

Disconnect the pin.

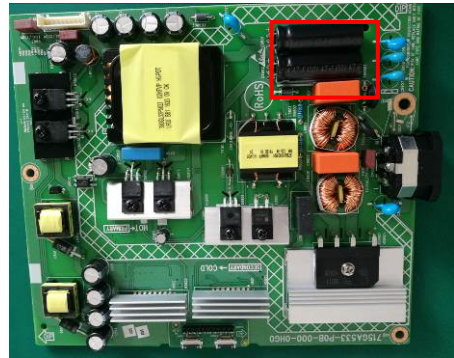
(No.1~4 screw size=Q2x2.5, Torque=0.9±0.4kgf.cm)

S12



S13

Remove electrolyte capacitors (red mark) from printed circuit boards



Take out bulk cap. Pins older with soldering iron and absorber.



Lift the bulk cap. up and away from the PCB



## 2. Product material information

The following substances, preparations, or components should be disposed of or recovered separately from other WEEE in compliance with Article 4 of EU Council Directive 75/442/EEC.

Capacitors / condensers (containing PCB/PCT)	No used
Mercury containing components	No used
Batteries	No used
Printed circuit boards (with a surface greater than 10 square cm)	Product has printed circuit boards (with a surface greater than 10 square cm)
Component contain toner, ink and liquids	No used
Plastic containing BFR	No used
Component and waste contain asbestos	No used
CRT	No used
Component contain CFC, HCFC, HFC and HC	No used
Gas discharge lamps	No used
LCD display > 100 cm <sup>2</sup>	Product has an LCD greater than 100 cm <sup>2</sup>
External electric cable	Product has external cables
Component contain refractory ceramic fibers	No used
Component contain radio-active substances	No used
Electrolyte capacitors (height > 25mm, diameter > 25mm)	Product has electrolyte capacitors (height > 25mm, diameter > 25mm)

## 3. Tools Required

List the type and size of the tools that would typically can be used to disassemble the product to a point where components and materials requiring selective treatment can be removed.

Tool Description:

- Screwdriver (Phillip head) #1
- Screwdriver (Phillip head) #2
- Penknife
- Soldering iron and absorber