

1. Disassembly Procedures:

S1 Open the carton with a proper tool.



Take out all accessories including QSG, user's manual, DP cable, USB cable, power cable and other packing materials from the carton. (Note: It depends on whether users returning the accessories)

S2



S3 Take out the base and molded pulp from the carton.



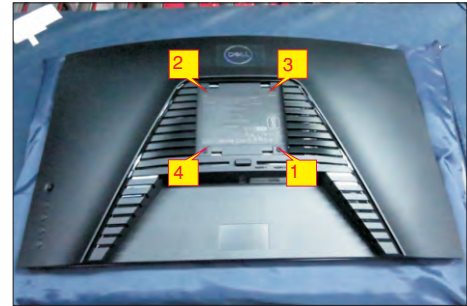
S4 Take out the monitor from EPE-bag and put the LCD monitor on a protective cushion.



S5

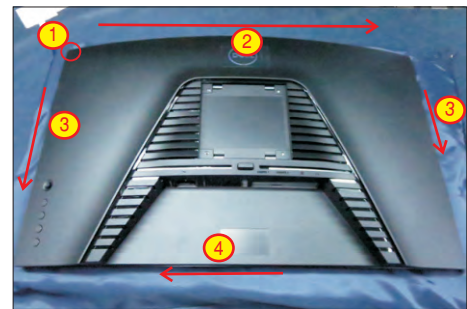
Use a Philips-head screwdriver to remove four screws for unlocking mechanisms.

(No.1~4 screw size=M4x8; Torque=10~11kgfxcM)



Wedge your fingers between the rear cover and the middle bezel on the corners of the top side of the monitor to release the rear cover, then use one hand to press the middle bezel, the other hand to pull up carefully the rear cover in order of arrow preference for unlocking mechanisms of rear cover.

S6



Lift the rear cover up carefully. Disconnect the function key cable and power key cable from the connectors of the interface board, and then remove the rear cover.

S7

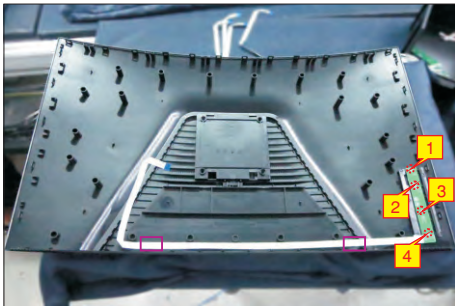




Put the rear cover on a protective cushion. Use a Philips-head screwdriver to remove 4pcs screws for unlocking the function key board with the rear cover. Tear off the key tapes and release the function key board from the hook of the rear cover.

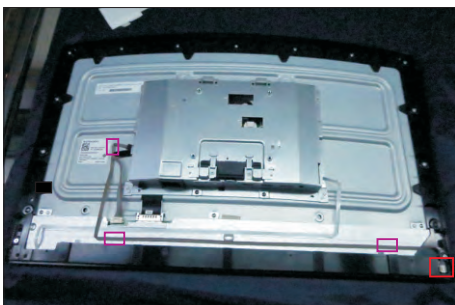
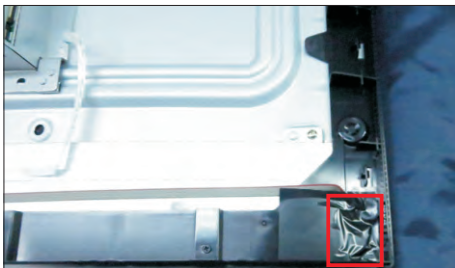
S9

(No.1~4 screw size=M2x0.2, Torque=0.8±0.2kgfxcM)



S10

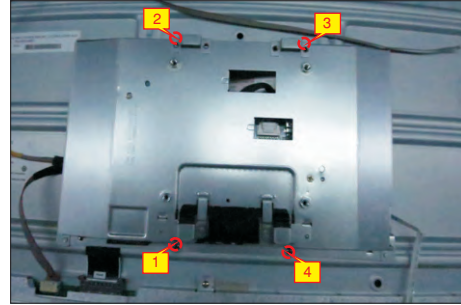
Tear off all the adhesive tapes for releasing the panel lamp cable, then disconnect the panel cable away from the connector of the panel module.



S11

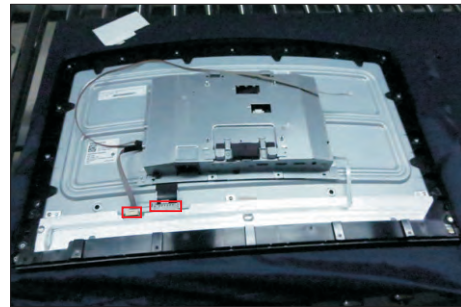
Use a Philips-head screwdriver to remove 4pcs screws for locking the bracket chassis module with the panel.

(No.1~4 Screw size= M3x0.5x2.8, Torque=5~6kgfxcM)



S12

Move the bracket, and then disconnect the LVDS cable and panel lamp cable from the connectors of the panel module, then lift up the bracket and put it on a protective cushion.



S13

Use a Philips-head screwdriver to remove 6pcs screws for unlocking the middle bezel with the front bezel. Use a Philips-head screwdriver to remove 13pcs screws for unlocking the middle bezel with the panel module. tear off 2pcs tapes of the power cable.

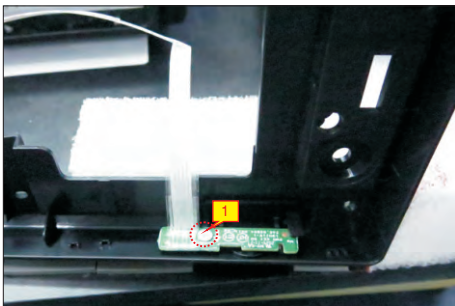
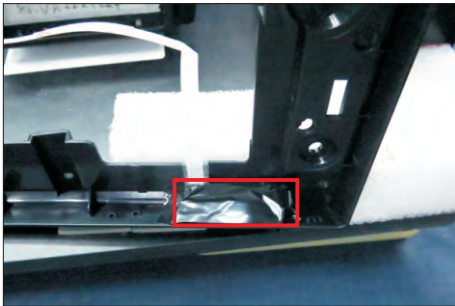
(No.1~6 Screw size=M2x3.8, Torque=3±0.5kgfxcM;
No.7~19 Screw size=M3x5, Torque=3~4kgfxcM)



S14

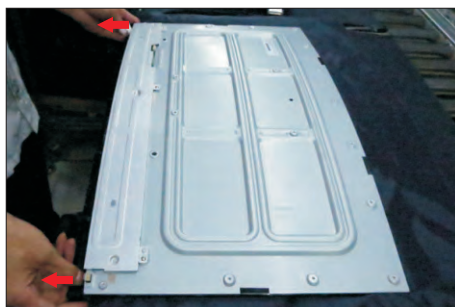
Remove the middle bezel and put it into a fixture jip, then tear off the black PVC tape and use a Philips-head screwdriver to remove 1pcs screw for unlocking the power key board with the front bezel.

(No.1 Screw size= M2x2.4, Torque=0.8±0.2kgfxcM)



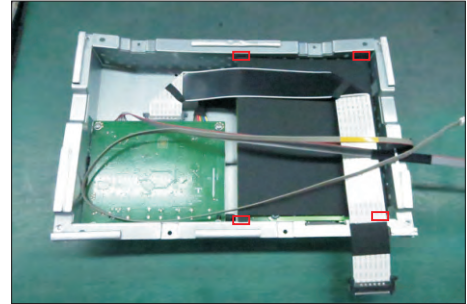
S15

Lift up the panel module and pull out the front bezel for releasing the front bezel.



S16

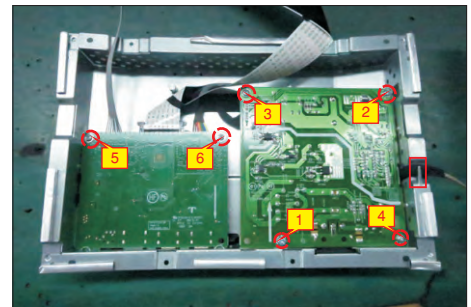
Turn over the bracket chassis module. Remove the Mylar from the hooks of the bracket.



Use a Philips-head screwdriver to remove 6pcs screws for unlocking power board and interface board, and then release the panel lamp cable from the hook of the bracket.

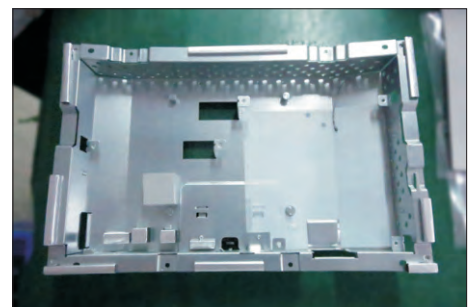
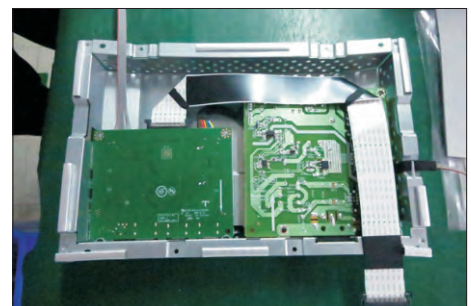
S17

(No.1 screw size=M4x8, Torque=6±0.5kgfxcM;
No.2~7 screw size=M3x7.5, Torque=6±0.5kgfxcM)



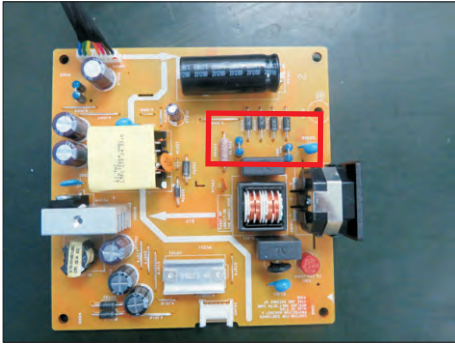
S18

Remove the circuit boards from the bracket chassis module carefully, and then disconnect all of the cables.

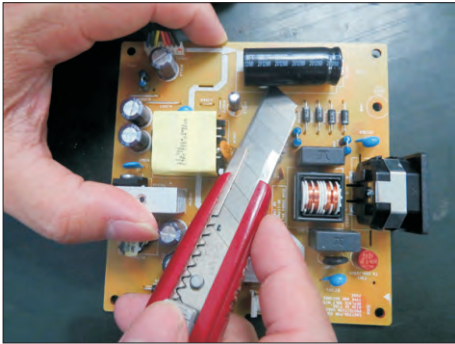


S19

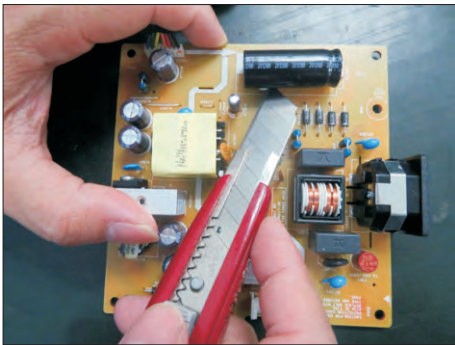
Remove electrolyte capacitors (red mark) from printed circuit boards.



S19-1 Cut the glue between bulk cap. and PCB with a knife.



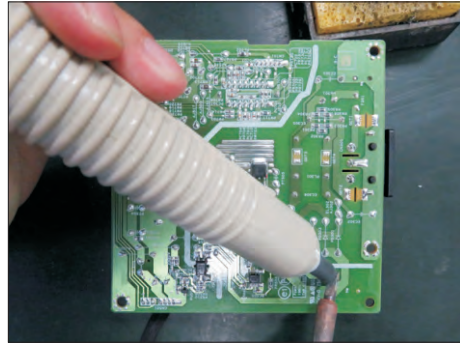
S19-2 Ensure cutting path within the glue, don't touch bulk cap. or PCB.



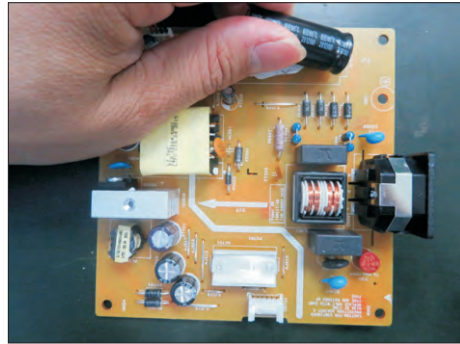
S19-3 Cut into the bottom of bulk cap. and pull it up carefully.



S19-4 Take out bulk cap. pin solder with soldering iron and absorber.



S19-5 Lift the bulk cap. up and away from the PCB.



2. Product material information

The following substances, preparations, or components should be disposed of or recovered separately from other WEEE in compliance with Article 4 of EU Council Directive 75/442/EEC.

Capacitors / condensers (containing PCB/PCT)	No used
Mercury containing components	No used
Batteries	No used
Printed circuit boards (with a surface greater than 10 square cm)	Product has printed circuit boards (with a surface greater than 10 square cm)
Component contain toner, ink and liquids	No used
Plastic containing BFR	No used
Component and waste contain asbestos	No used
CRT	No used
Component contain CFC, HCFC, HFC and HC	No used
Gas discharge lamps	No used
LCD display > 100 cm ²	Product has an LCD greater than 100 cm ²
External electric cable	Product has external cables
Component contain refractory ceramic fibers	No used
Component contain radio-active substances	No used
Electrolyte capacitors (height > 25mm, diameter > 25mm)	Product has electrolyte capacitors (height > 25mm, diameter > 25mm)

3. Tools Required

List the type and size of the tools that would typically can be used to disassemble the product to a point where components and materials requiring selective treatment can be removed.

Tool Description:

- Screwdriver (Phillip head) #1
- Screwdriver (Phillip head) #2
- Penknife
- Soldering iron and absorber