

## 1. Disassembly Procedures:

**S1** Open the carton with a proper tool.



Take out all accessories including QSG, user's manual, DP cable, HDMI cable, USB cable, power cable and other packing materials from the carton. (Note: It depends on whether users returning the accessories)

**S2**



**S3** Take out the base and molded pulp from the carton.



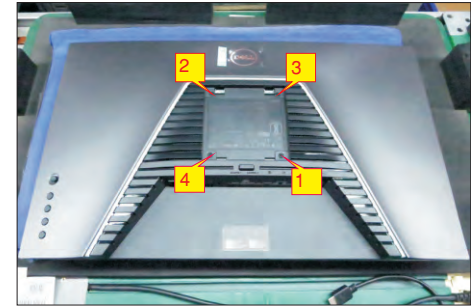
**S4** Take out the monitor from EPE-bag and put the LCD monitor on a protective cushion.



**S5**

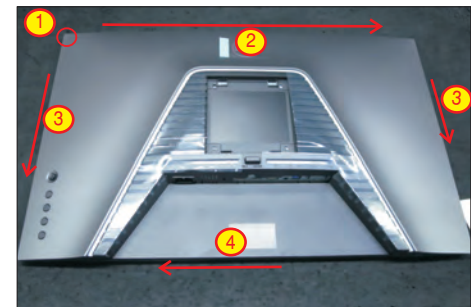
Use a Philips-head screwdriver to remove four screws for unlocking mechanisms.

(No.1~4 screw size=M4x8; Torque=10~11kgfxcM)



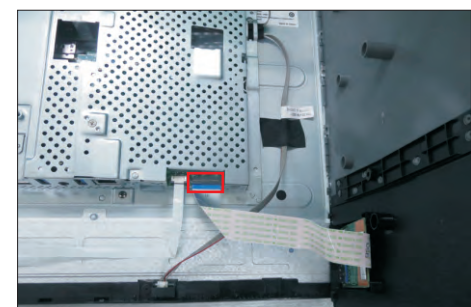
Wedge your fingers between the rear cover and the middle bezel on the corners of the top side of the monitor to release the rear cover, then use one hand to press the middle bezel, the other hand to pull up carefully the rear cover in order of arrow preference for unlocking mechanisms of rear cover.

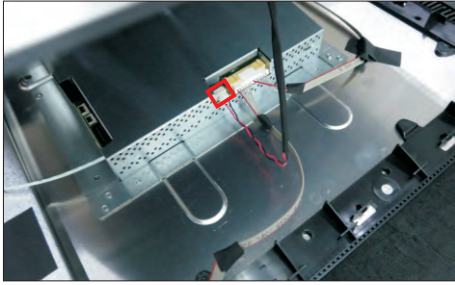
**S6**



Lift the rear cover up carefully. Disconnect the USB FFC cable, joystick key cable and power key cable from the connectors of the interface board, and then disconnect the back LED light bar cable from the connector of the power board, and then remove the rear cover.

**S7**

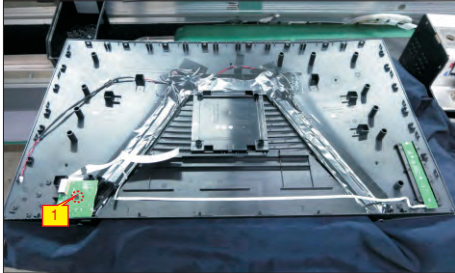




S8

Use a Philips-head screwdriver to remove one screw for unlocking the USB board unit, then release the USB board unit and put it aside.

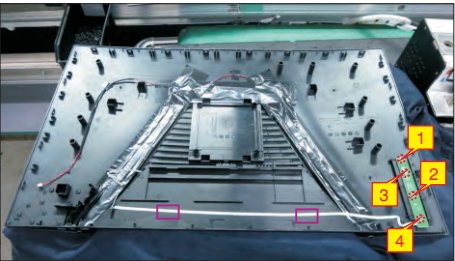
(No.1 screw size=M3x6, Torque=4±0.5kgfxcM)



S9

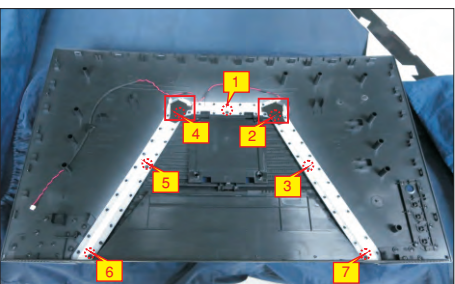
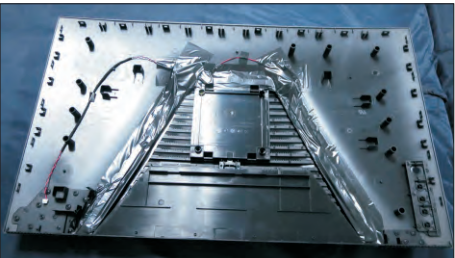
Use a Philips-head screwdriver to remove 4pcs screws for unlocking the joystick key board with the rear cover. Tear off the joystick key tapes and release the joystick key board from the hook of the rear cover.

(No.1~4 screw size=M2x0.2, Torque=0.8±0.2kgfxcM)



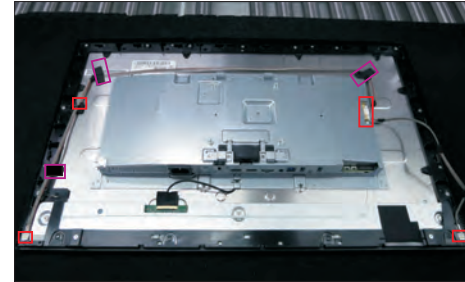
S10

Tear off all the mylar and tapes, then use a Philips-head screwdriver to remove 7pcs screws for releasing the diffuser, reflector and LGP.



S11

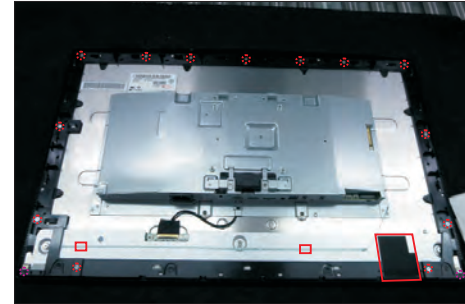
Tear off all the adhesive tapes for releasing the panel lamp cable, then disconnect the cable away from the connectors of the power board and panel.



S12

Tear off the mylar tape on the position as the picture below shown. Use a Philips-head screwdriver to remove 13pcs screws for unlocking the middle bezel with the panel module. Use a Philips-head screwdriver to remove 2pcs screws for unlocking the middle bezel with the front bezel.

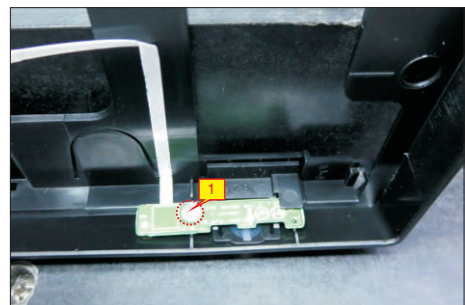
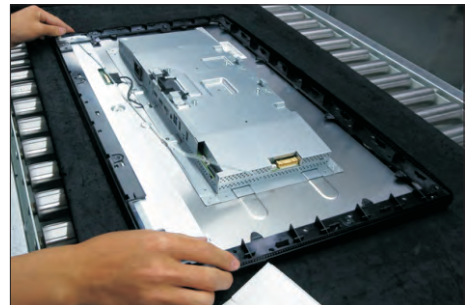
(No.1~13 Screw size= M3x5, Torque=3~4kgfxcM;  
No.14~15 Screw size= M2x2.7, Torque=1~2kgfxcM)



S13

Remove the middle bezel and put it into a fixture jip, then use a Philips-head screwdriver to remove 1pcs screw for unlocking the power key board with the front bezel.

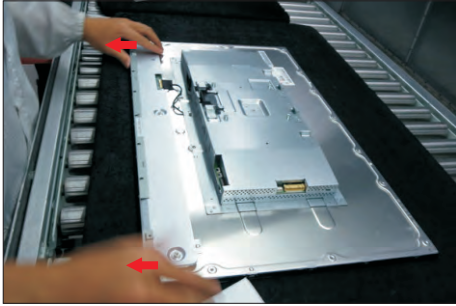
(No.1 Screw size= M2x2.4, Torque=0.8±0.2kgfxcM)





S14

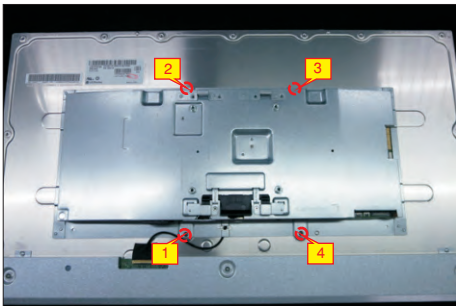
Lift up the panel module and pull out the front bezel for releasing the front bezel.



S15

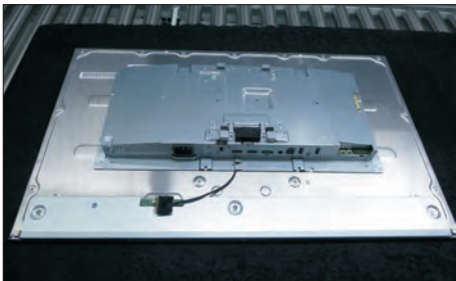
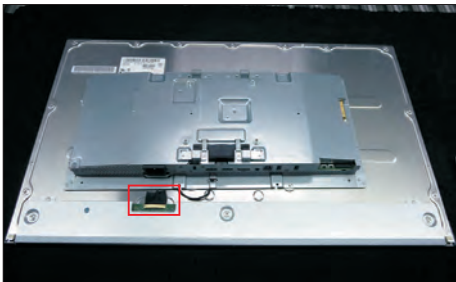
Use a Philips-head screwdriver to remove 4pcs screws for locking the bracket chassis module with the panel.

(No.1~4 Screw size= M3x0.5x2.8, Torque=5~6kgfxcM)



S16

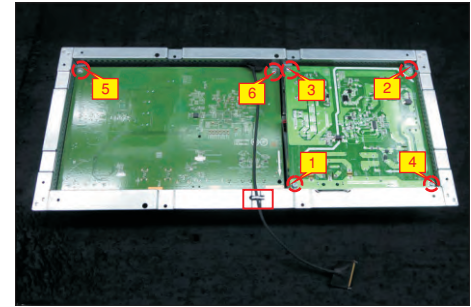
Tear off the adhesive tape, and then disconnect the EDP cable from the connector of the panel module, then put the bracket chassis on a protective cushion.



S17

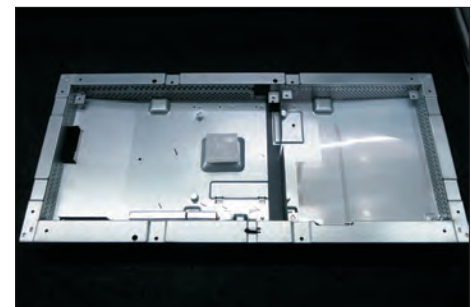
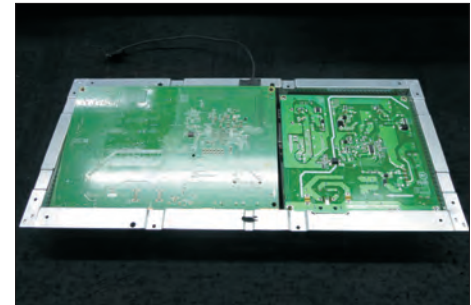
Turn over the bracket chassis module. Use a Philips-head screwdriver to remove 6pcs screws for unlocking power board and interface board, and then release the EDP cable from the hook of the bracket.

(No.1 screw size=M4x8, Torque=6±0.5kgfxcM;  
No.2~7 screw size=M3x7.5, Torque=6±0.5kgfxcM)



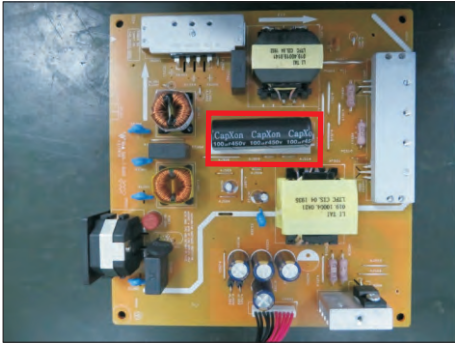
S18

Remove the circuit boards from the bracket chassis module carefully, and then disconnect all of the cables.

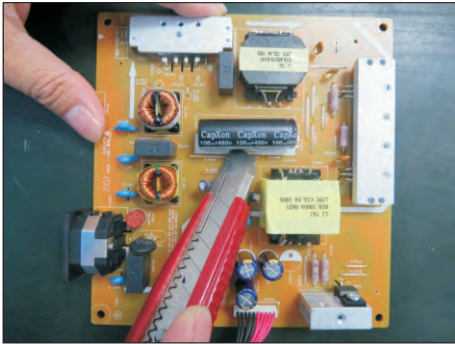


S19

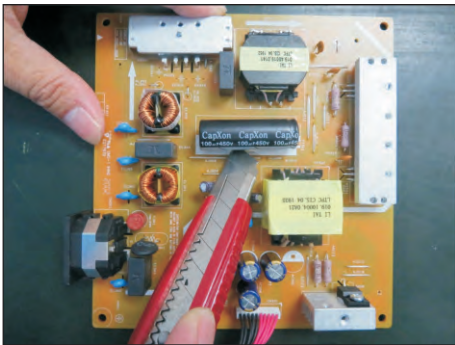
Remove electrolyte capacitors (red mark) from printed circuit boards.



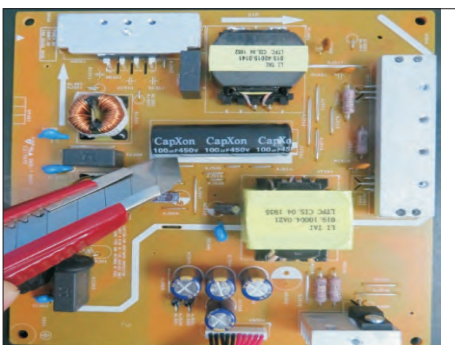
S19-1 Cut the glue between bulk cap. and PCB with a knife.



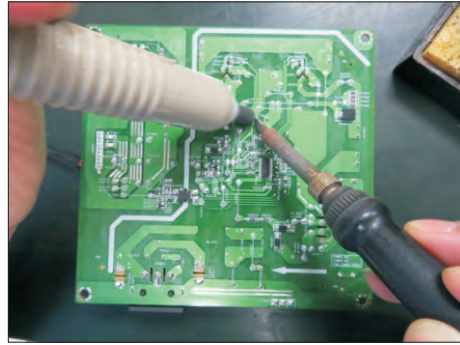
S19-2 Ensure cutting path within the glue, don't touch bulk cap. or PCB.



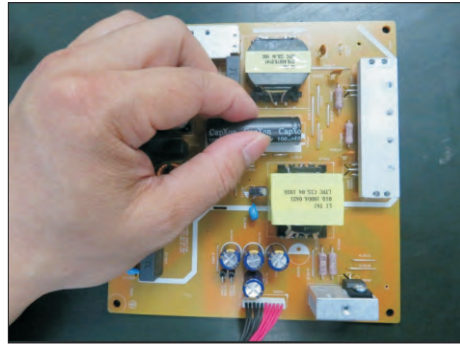
S19-3 Cut into the bottom of bulk cap. and pullit up carefully.



S19-4 Take out bulk cap. pin solder with soldering iron and absorber.



S19-5 Lift the bulk cap. up and away from the PCB.



## 2. Product material information

The following substances, preparations, or components should be disposed of or recovered separately from other WEEE in compliance with Article 4 of EU Council Directive 75/442/EEC.

Capacitors / condensers (containing PCB/PCT)	No used
Mercury containing components	No used
Batteries	No used
Printed circuit boards (with a surface greater than 10 square cm)	Product has printed circuit boards (with a surface greater than 10 square cm)
Component contain toner, ink and liquids	No used
Plastic containing BFR	No used
Component and waste contain asbestos	No used
CRT	No used
Component contain CFC, HCFC, HFC and HC	No used
Gas discharge lamps	No used
LCD display > 100 cm <sup>2</sup>	Product has an LCD greater than 100 cm <sup>2</sup>
External electric cable	Product has external cables
Component contain refractory ceramic fibers	No used
Component contain radio-active substances	No used
Electrolyte capacitors (height > 25mm, diameter > 25mm)	Product has electrolyte capacitors (height > 25mm, diameter > 25mm)

## 3. Tools Required

List the type and size of the tools that would typically can be used to disassemble the product to a point where components and materials requiring selective treatment can be removed.

Tool Description:

- Screwdriver (Phillip head) #1
- Screwdriver (Phillip head) #2
- Penknife
- Soldering iron and absorber