

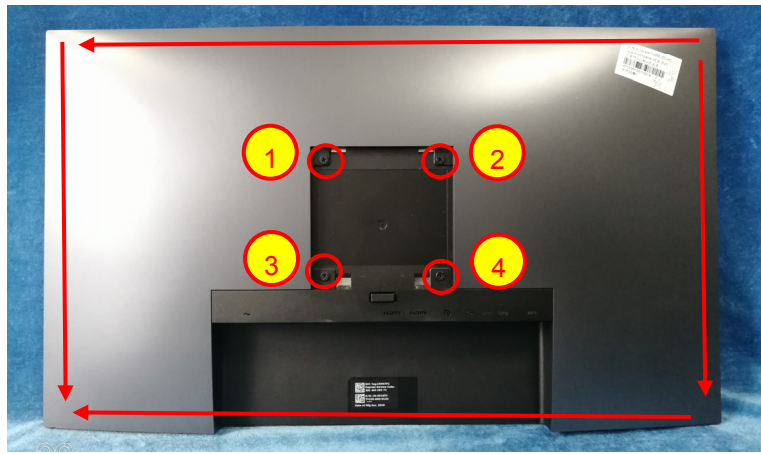


1. Disassembly Procedures:

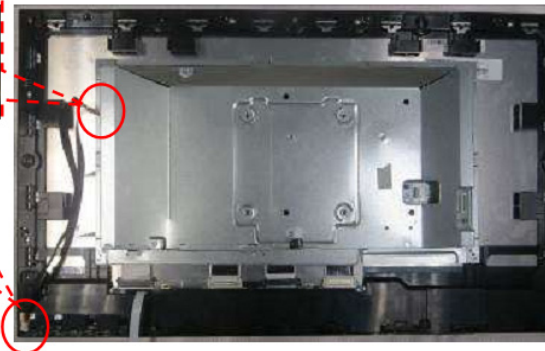
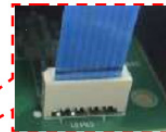
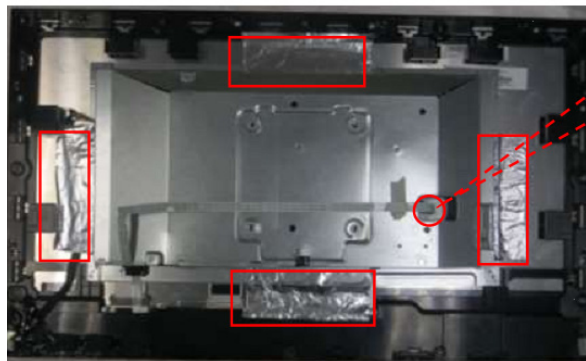
Step	Figure	Remark
<p>S1.Before disassemble</p>		<p>Turn off power, Unplug external cables from product</p>
<p>S2. Remove the STAND-BASE ASS'Y</p>		<p>Press the button on the red then pull out the stand upward, stand will be remove.</p> <p><b>Note:</b> To prevent scratches on the LCD screen while removing the stand, ensure that the monitor is placed on a soft, clean surface.</p>

**S3.Remove the REAR COVER.**


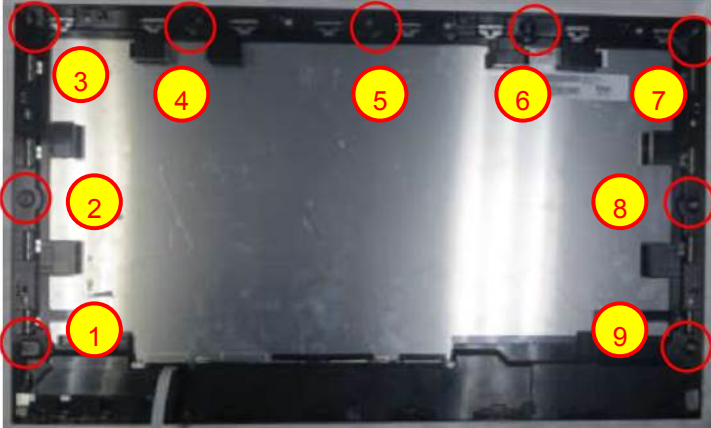


Use a Philips-head screwdriver to remove 4 screws for unlocking mechanisms.

(No.1~4 screw size=M4x10;

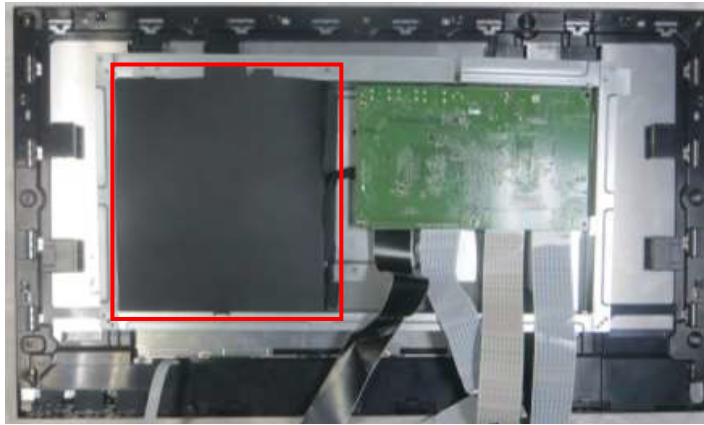
Torque=12±2kgf.cm)

**S4.Remove the Cables and Tapes**

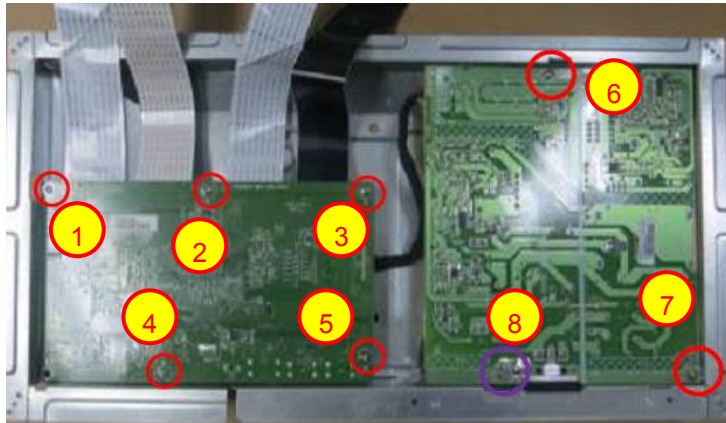
Disconnect the pins and the tapes.

		
<p><b>S5.Remove the Middle_Frame</b></p>		<p>Use a Philips-head screwdriver to remove 9 screws for remove the middle frame (No.1~9 screw size=M3x4; Torque=3±0.5kgf.cm)</p>
<p><b>S6.The Panel</b></p>		
<p><b>S6.Remove the Hook</b></p>		<p>Use a Philips-head screwdriver to remove 4 screws for remove the hook (No.1~4 screw size=M2x3.5; Torque=3±0.5kgf.cm)</p>

**S7.Remove the mylar**



**S8.Remove the Main Board and Power Board**



Use a Philips-head screwdriver to remove 7 screws for remove main board and Power board

(No.1~7 screw

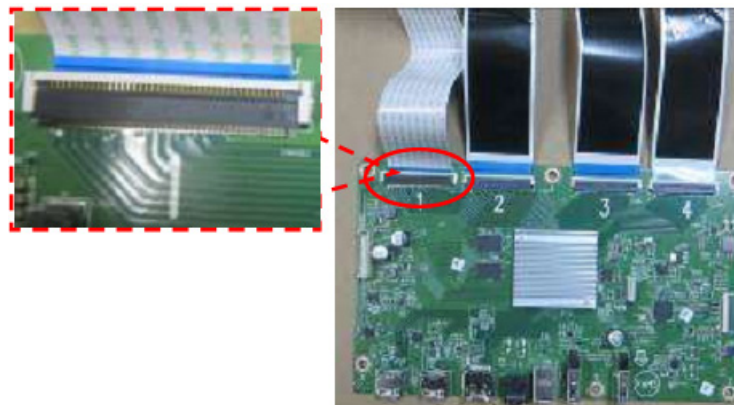
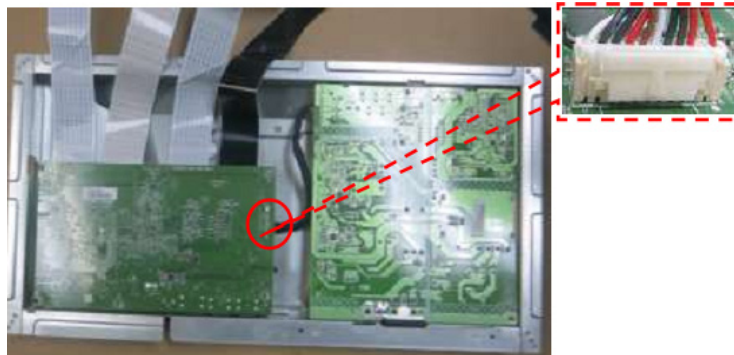
size=D3x6;

Torque=6±1kgf.cm

No.7 screw size=M4x6;

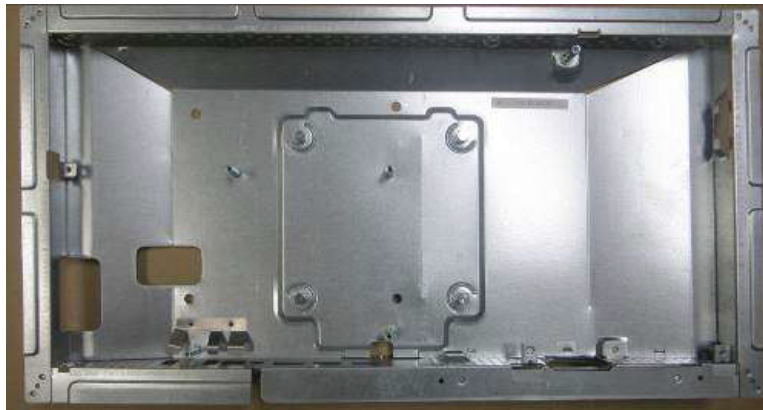
Torque=6±1kgf.cm)

**S9.Disconnect the pins**



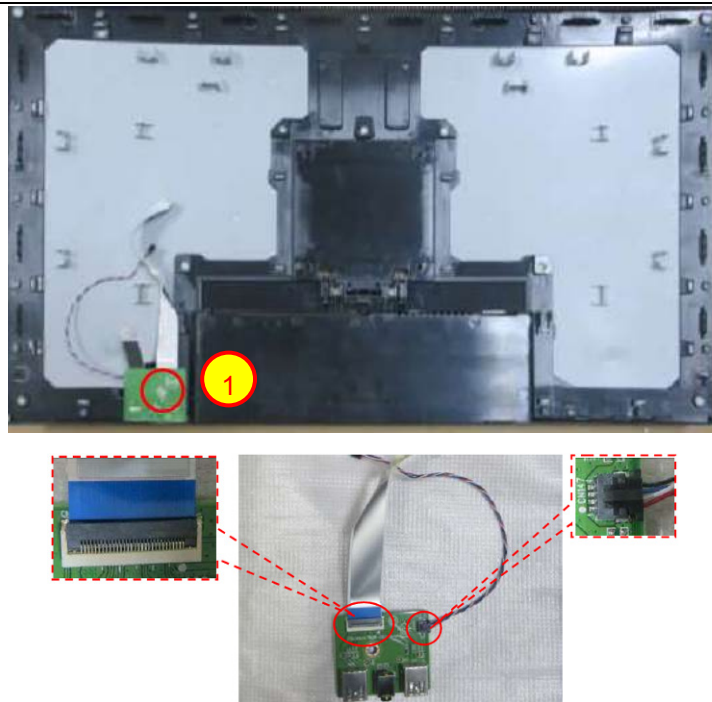


S10.The Mainframe



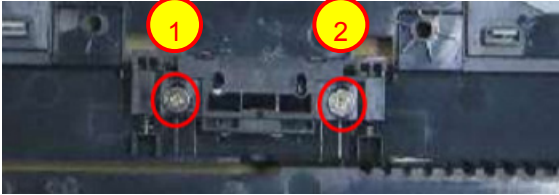

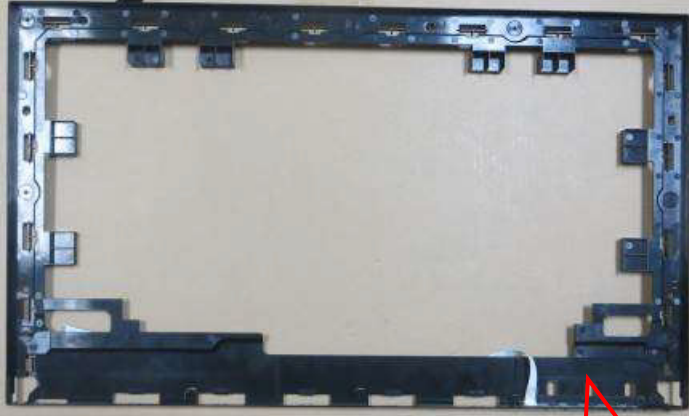

Mainframe

S11.Remove the USB board

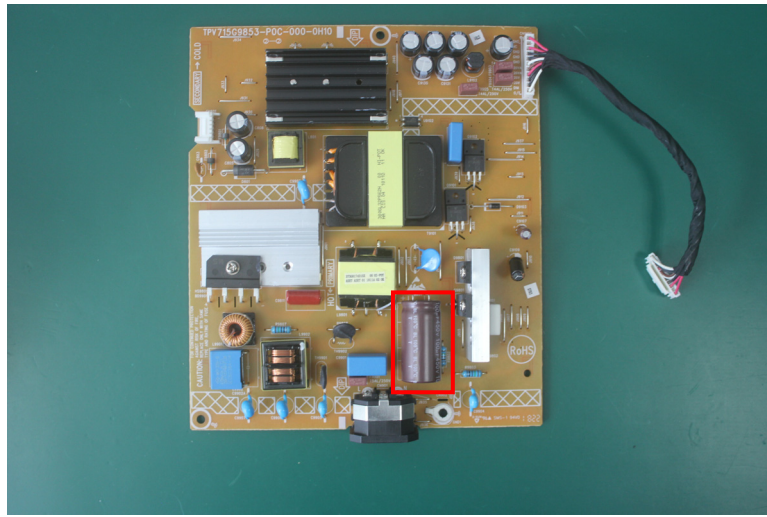


Use a Philips-head screwdriver to remove 1 screw for remove USB board (No.1 screw size=M3x6; Torque=4±1kgf.cm)

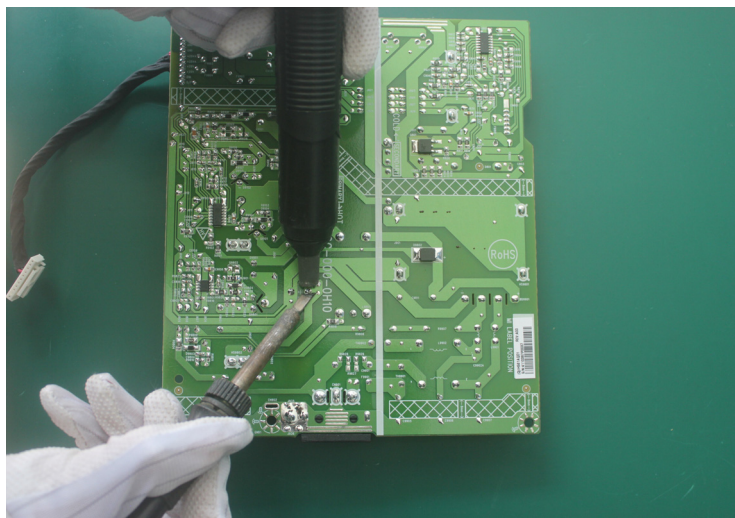
Disconnect the pins

<b>S12.Remove the Latch</b>		<p>Use a Philips-head screwdriver to remove 2 screws for remove the latch (No.1~2 screw size=M3x6; Torque=6±1kgf.cm)</p>
<b>S13.The Rear Cover</b>		
<b>S14.The Middleframe and the Key Board</b>	 	

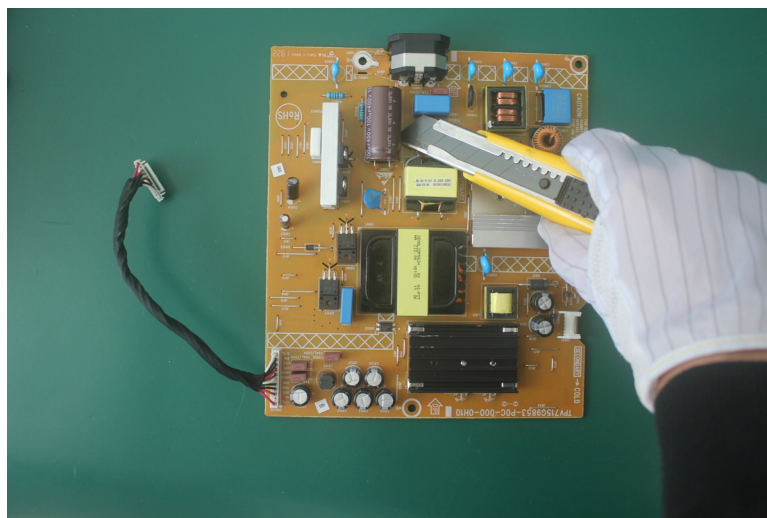
**S8.Remove capacitors**



Remove electrolyte capacitors (red mark) from printed circuit boards



Take out bulk cap. pin solder with soldering iron and absorber



Lift the bulk cap. up and away from the PCB

## 2. Product material information

The following substances, preparations, or components should be disposed of or recovered separately from other WEEE in compliance with Article 4 of EU Council Directive 75/442/EEC.

Capacitors / condensers (containing PCB/PCT)	No used
Mercury containing components	No used
Batteries	No used
Printed circuit boards (with a surface greater than 10 square cm)	Product has printed circuit boards (with a surface greater than 10 square cm)
Component contain toner, ink and liquids	No used
Plastic containing BFR	No used
Component and waste contain asbestos	No used
CRT	No used
Component contain CFC, HCFC, HFC and HC	No used
Gas discharge lamps	No used
LCD display > 100 cm <sup>2</sup>	Product has an LCD greater than 100 cm <sup>2</sup>
External electric cable	Product has external cables
Component contain refractory ceramic fibers	No used
Component contain radio-active substances	No used
Electrolyte capacitors (height > 25mm, diameter > 25mm)	Product has electrolyte capacitors (height > 25mm, diameter > 25mm)

## 3. Tools Required

List the type and size of the tools that would typically can be used to disassemble the product to a point where components and materials requiring selective treatment can be removed.

Tool Description:

- Phillip head Screwdriver
- Penknife
- Soldering iron and absorber