

1. Disassembly Procedures

S1 Turn off the monitor.

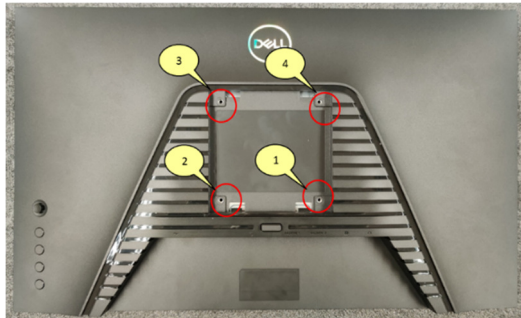
S2 Place the monitor on S2422HGB Curve Sponge Jig

Press and hold the stand release button

Lift the stand up and away from the monitor.



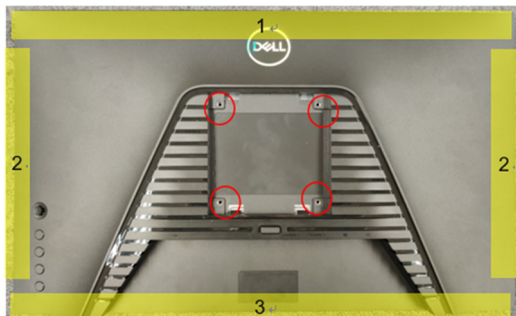
S3 Unlock 4 RC screws



(Screw Torque: 8~10kgf)

S4 Use hands or scraper bar to disassemble Rear Cover from monitor

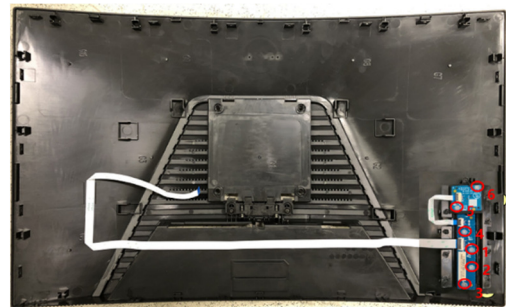
Notice the disassembly order:
Top Side=>Right/ Left Side=>Bottom Side



S5 Remove "CTRL BD FFC" from I/F BD and tear off it from Main SHD to take off Rear Cover

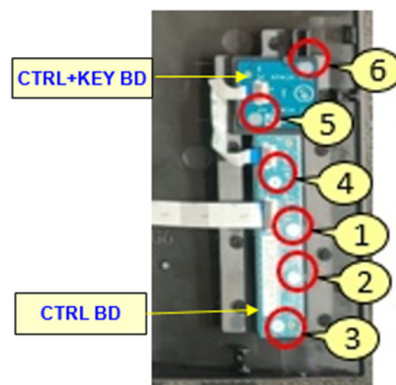


S6 Tear off "CTRL BD FFC" from Rear Cover



S7 Unlock 6 CTRL BD screws
Disassemble "CTRL BD" and "CTRL + KEY BD" from Rear Cover

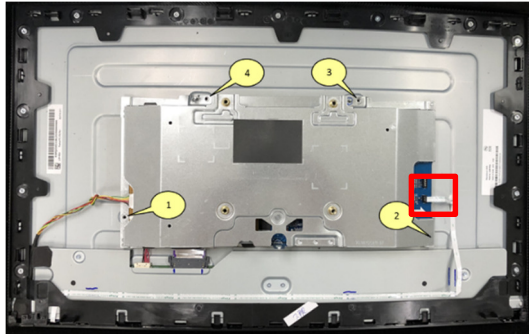
Remove "CTRL BD FFC" and "CTRL + KEY BD FFC" from "CTRL BD" and "CTRL+KEY BD"



(Screw Torque: 0.95~1.05kgf)

S8 Remove "LENS BD (PWR BTN BD) FFC" from I/F BD

Unlock 4 screws on Main SHD



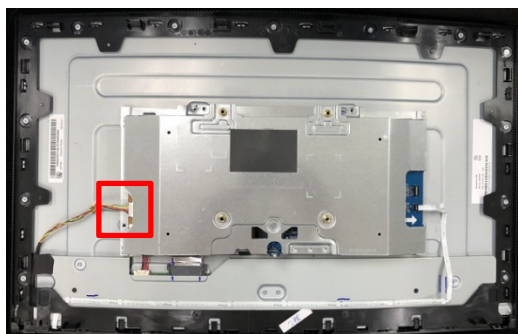
(Screw Torque: 4.5±0.5kgf)

S9 Unlock 2 Trim screws



(Screw Torque: 1.8~2.0kgf)

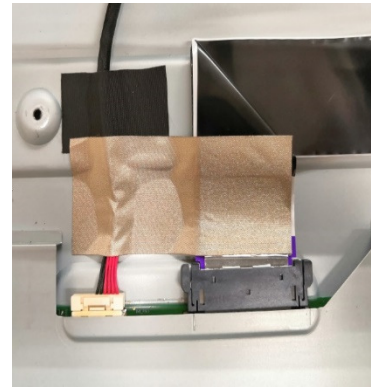
S10 Remove Backlight wire from SPS BD



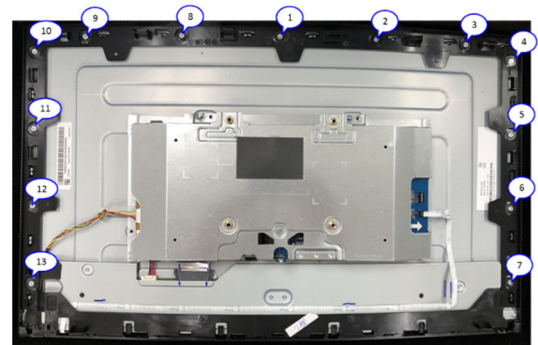
S11 Remove conductive cloth and acetate tape from panel

Unplug "LVDS FFC cable" and "WIRE 6P/10P" from panel

Take off Main SHD from Panel



S12 Unlock 13 MF screws



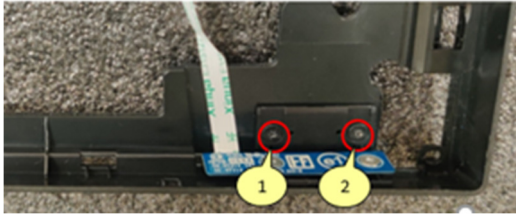
(Screw Torque: 4.5±0.5kgf)

S13 Disassemble Middle Frame and "BZL CHIN" from panel



S14 Unlock 2 screws from Middle Frame

Disassemble PWR BTN from Middle Frame



(Screw Torque: 1.8~2.0kgf)

S15 Unlock 2 screws from PWR BTN

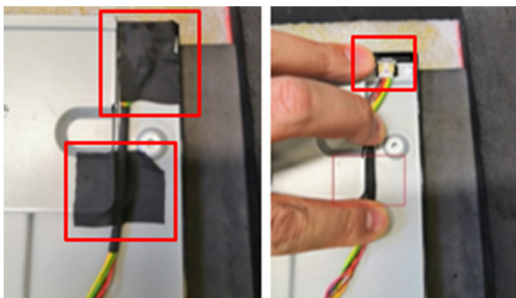
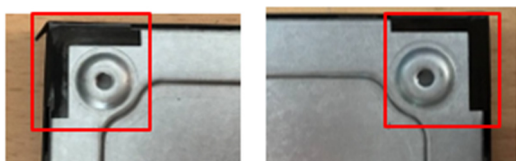
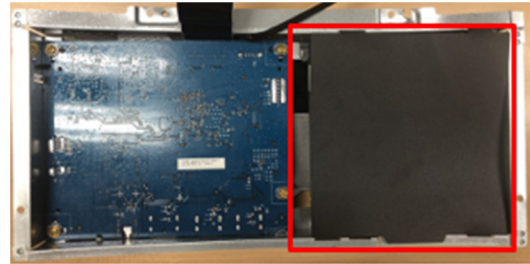
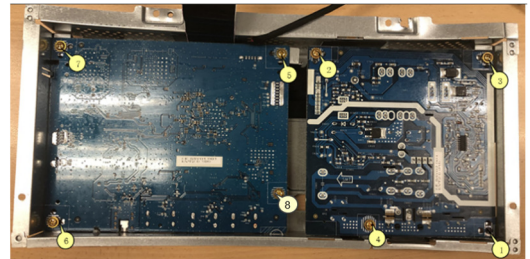
Disassemble "LENS BD (PWR BTN BD)" from PWR BTN



(Screw Torque: 0.95~1.05kgf)

S16 Tear off 2 tape on the connector of Backlight wire

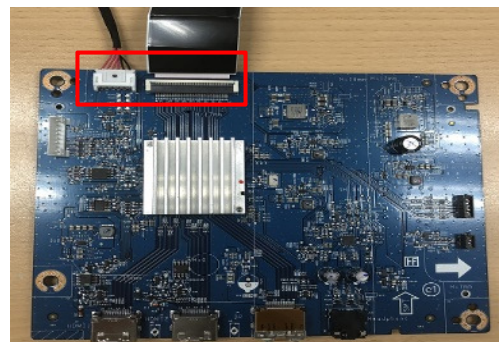
Remove Backlight wire from panel

**S17** Remove 2 pieces of small Mylar on the Panel**S18** Remove Mylar from SPS BD**S19** Unlock 8 PCBA screws

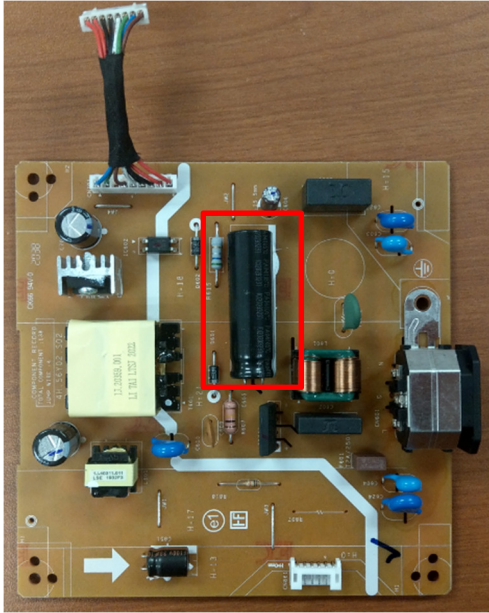
(Screw Torque: 8.5±1.0kgf)

S20 Disassemble I/F BD from Main SHD and remove SPS BD wire from I/F BD

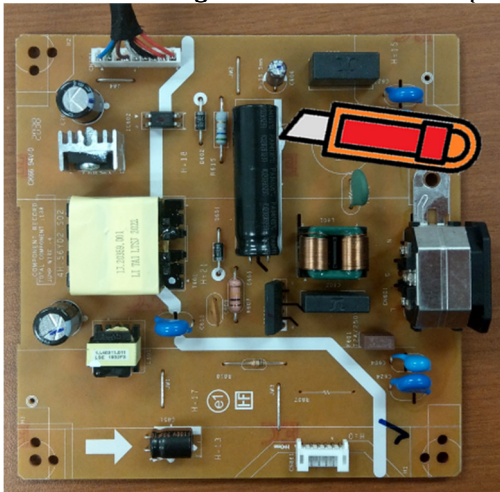
Disassemble SPS BD from Main SHD

**S21** Remove "LVDS FFC cable" and "WIRE 6P/10P" from I/F BD

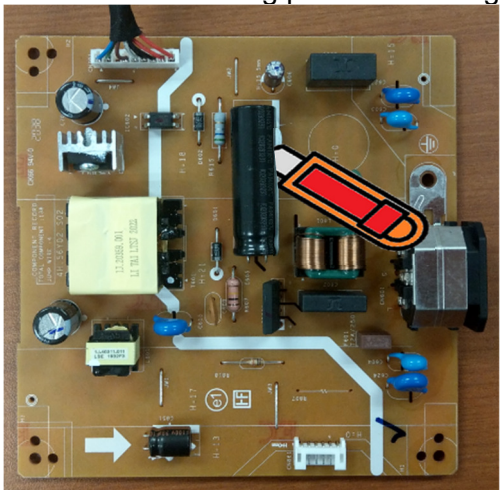
S22 Remove electrolyte capacitors (red mark) from printed circuit boards



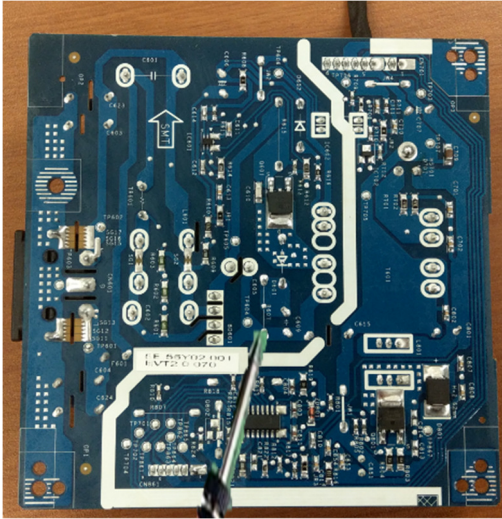
S22-1 Cut the glue between bulk cap. and PCB with a knife



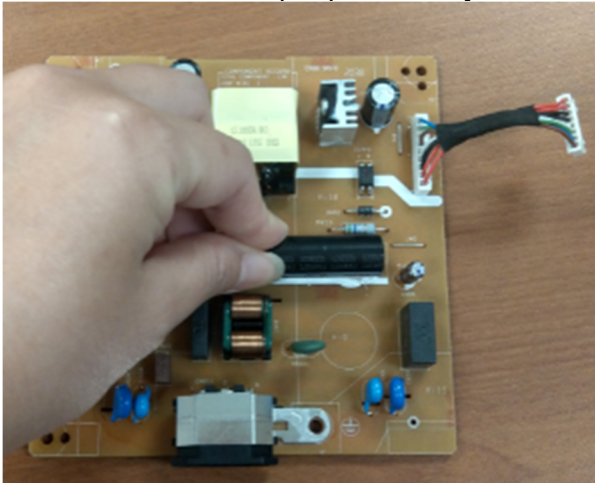
S22-2 Ensure cutting path within the glue, don't touch bulk cap. or PCB



S22-3 Take out bulk cap. pin solder with soldering iron and absorber



S22-4 Lift the bulk cap. up and away from the PCB



2. Product material information

The following substances, preparations, or components should be disposed of or recovered separately from other WEEE in compliance with Article 4 of EU Council Directive 75/442/EEC.

Capacitors / condensers (containing PCB/PCT)	No used
Mercury containing components	No used
Batteries	No used
Printed circuit boards (with a surface greater than 10 square cm)	Product has printed circuit boards (with a surface greater than 10 square cm)
Component contain toner, ink and liquids	No used
Plastic containing BFR	No used
Component and waste contain asbestos	No used
CRT	No used
Component contain CFC, HCFC, HFC and HC	No used
Gas discharge lamps	No used
LCD display > 100 cm ²	Product has an LCD greater than 100 cm ²
External electric cable	Product has external cables
Component contain refractory ceramic fibers	No used
Component contain radio-active substances	No used
Electrolyte capacitors (height > 25mm, diameter > 25mm)	Product has electrolyte capacitors (height >25mm, diameter > 25mm)

3. Tools Required

List the type and size of the tools that would typically can be used to disassemble the product to a point where components and materials requiring selective treatment can be removed.

Tool Description:

- Screwdriver
- Scraper Bar
- Penknife
- Soldering iron and absorber
- S2422HGB Curve Sponge Jig