

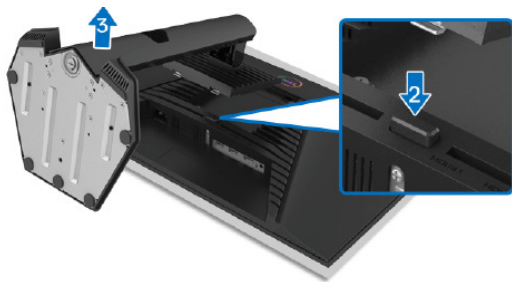
1. Disassembly Procedures

**S1** Turn off the monitor.

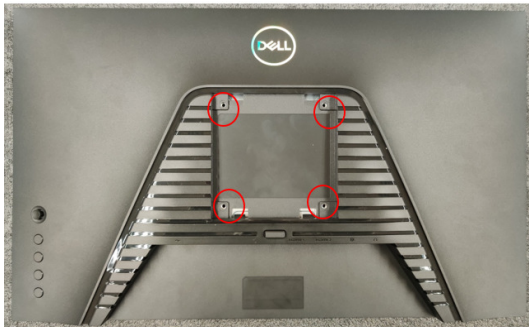
**S2** Place the monitor on a soft cloth or cushion

Press and hold the stand release button

Lift the stand up and away from the monitor



**S3** Unlock 4 RC screws

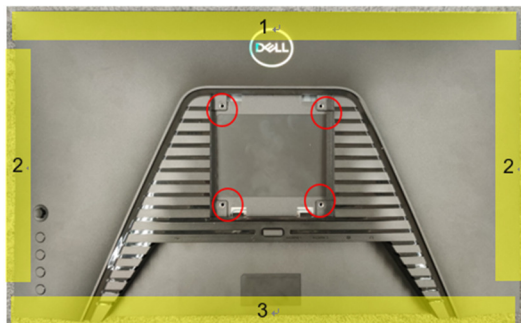


(Screw Torque: 8~10kgf)

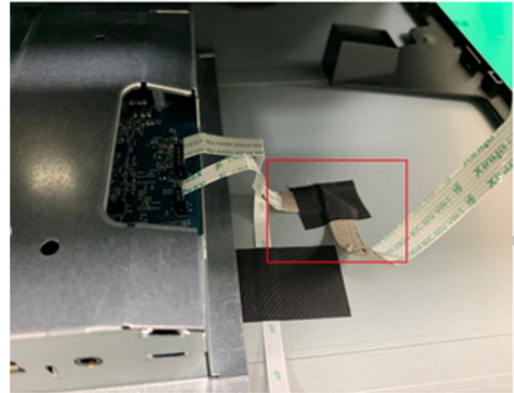
**S4** Use hands or scraper bar to disassemble Rear Cover from monitor

**Notice the disassembly order:**

Top Side=>Right/ Left Side=>Bottom Side



**S5** Remove CTRL BD FFC wire from I/F BD and remove all tapes from panel

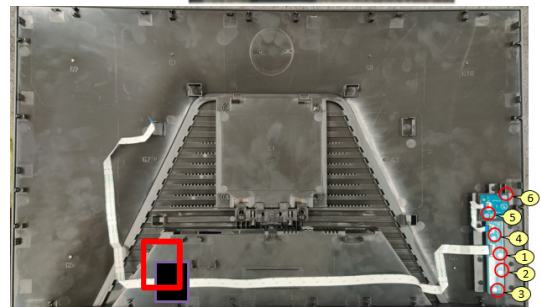
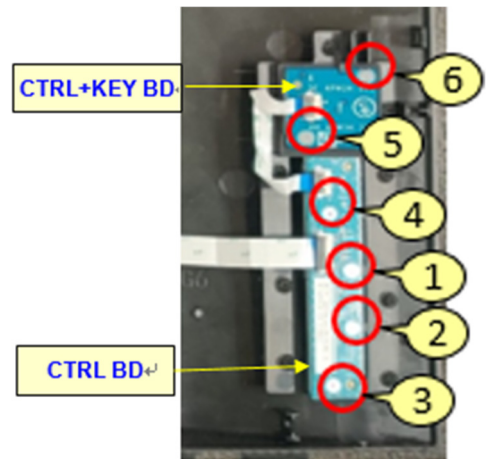


**S6** Unlock 6 CTRL BD screws

Remove tapes from Rear Cover

Disassemble CTRLB and CTRL + KEY BD from Rear Cover

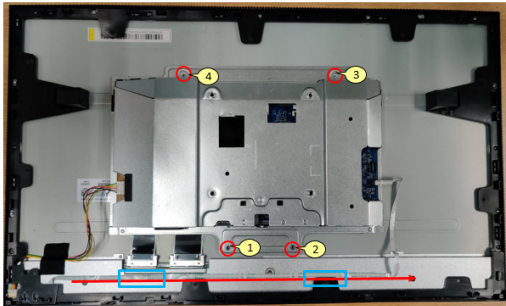
Remove CTRL BD FFC wire and CTRL + KEY BD FFC wire from CTRL BD and CTRL+KEY BD



(Screw Torque: 0.95~1.05kgf)

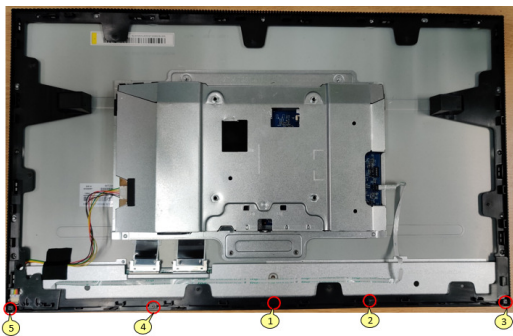
**S7** Remove PWR BTN BD FFC wire from I/F BD

Unlock 4 screws on Main SHD



(Screw Torque:  $4.5 \pm 0.5$ kgf)

**S8** Unlock 5 Trim screws

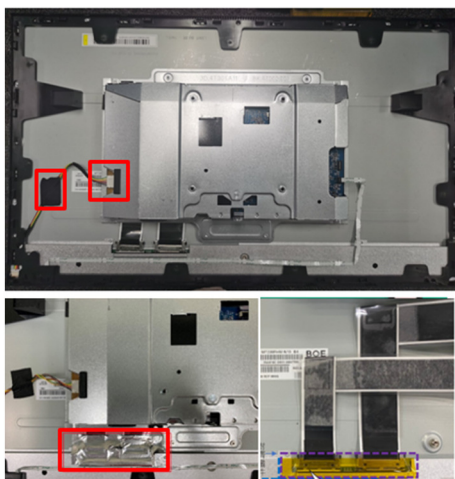


(Screw Torque:  $1 \sim 1.1$ kgf)

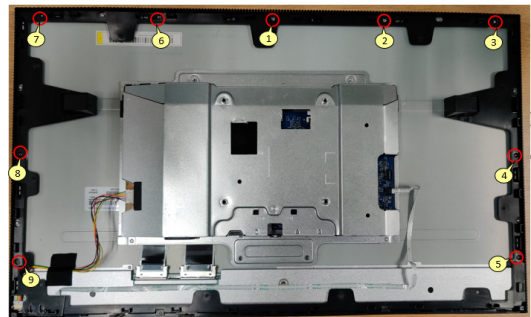
**S9** Remove backlight wire from SPS BD and remove all tapes from panel

Remove AL foil and yellow tape from panel

Remove two LVDS FFC cable from panel

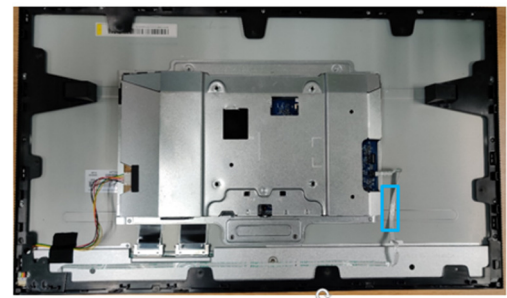


**S10** Unlock 9 MF screws



(Screw Torque:  $7.0 \pm 0.5$ kgf)

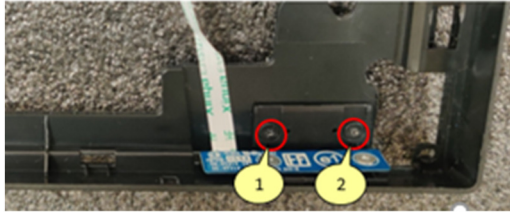
**S11** Disassemble Middle Frame and "BZL CHIN" from panel





**S12** Unlock 2 screws from Middle Frame

Disassemble PWR BTN from Middle Frame



(Screw Torque: 1~1.1kgf)

**S13** Unlock 2 screws from PWR BTN

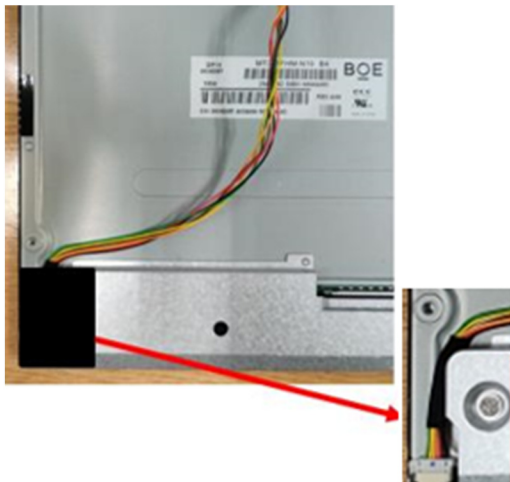
Disassemble PWR BTN BD from PWR BTN



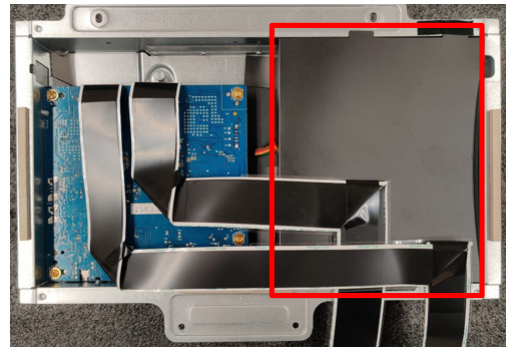
(Screw Torque: 0.95~1.05kgf)

**S14** Tear off 1 tape on the connector of backlight wire

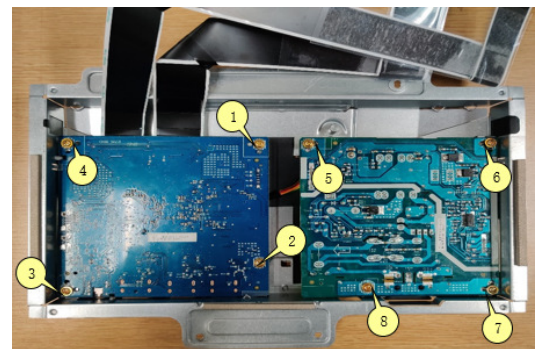
Remove Backlight wire from panel



**S15** Remove Mylar from SPS BD



**S16** Unlock 8 PCBA screws

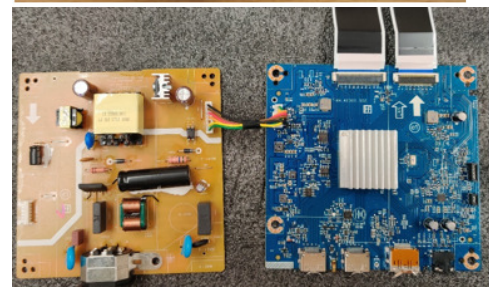
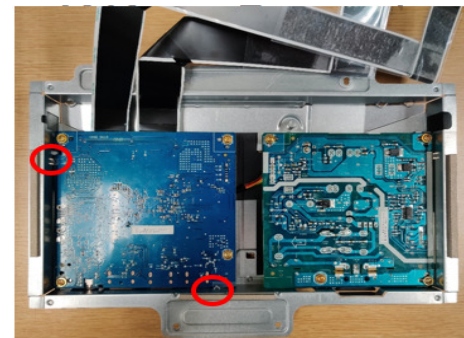


(Screw Torque: 8.5±1.0kgf)

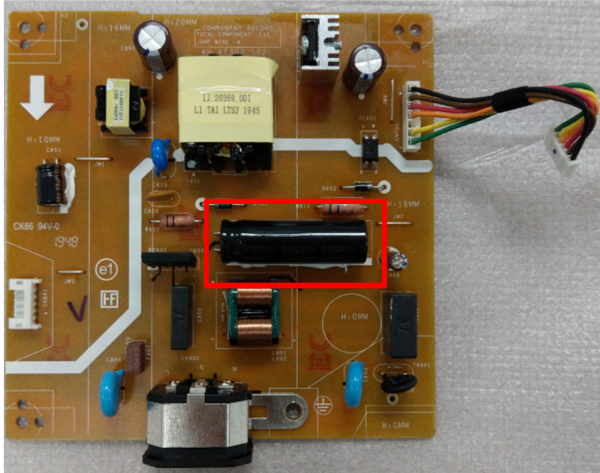
**S17** Disassemble I/F BD from Main SHD and remove SPS BD wire from I/F BD

Remove two LVDS FFC cable from I/F BD

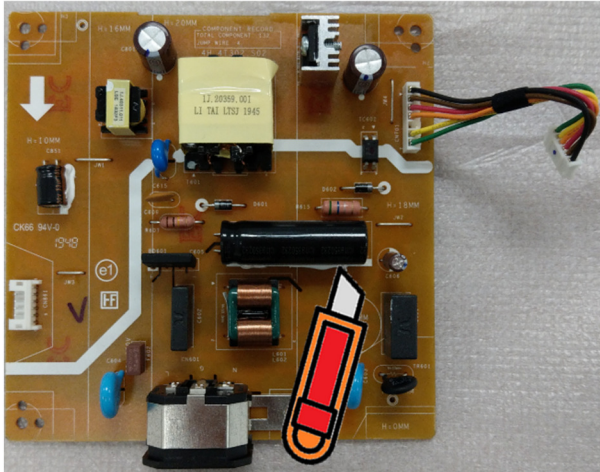
Disassemble SPS BD from Main SHD



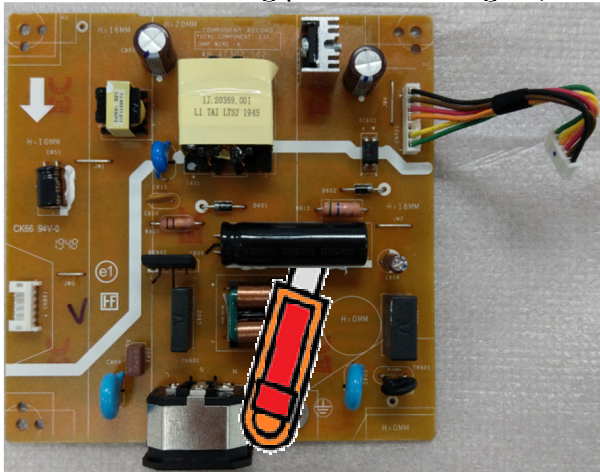
**S18** Remove electrolyte capacitors (red mark) from printed circuit boards



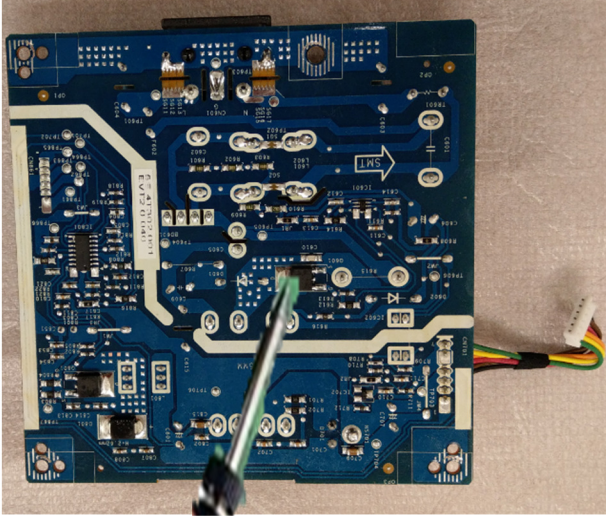
S18-1 Cut the glue between bulk cap. and PCB with a knife



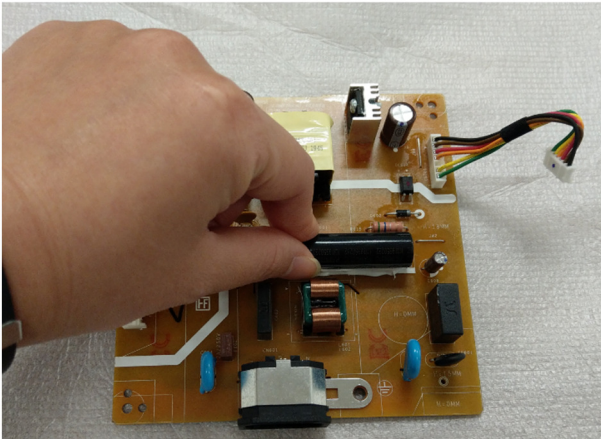
S18-2 Ensure cutting path within the glue, don't touch bulk cap. or PCB



S18-3 Take out bulk cap. pin solder with soldering iron and absorber



S18-4 Lift the bulk cap. up and away from the PCB





## 2. Product material information

The following substances, preparations, or components should be disposed of or recovered separately from other WEEE in compliance with Article 4 of EU Council Directive 75/442/EEC.

Capacitors / condensers (containing PCB/PCT)	No used
Mercury containing components	No used
Batteries	No used
Printed circuit boards (with a surface greater than 10 square cm)	Product has printed circuit boards (with a surface greater than 10 square cm)
Component contain toner, ink and liquids	No used
Plastic containing BFR	No used
Component and waste contain asbestos	No used
CRT	No used
Component contain CFC, HCFC, HFC and HC	No used
Gas discharge lamps	No used
LCD display > 100 cm <sup>2</sup>	Product has an LCD greater than 100 cm <sup>2</sup>
External electric cable	Product has external cables
Component contain refractory ceramic fibers	No used
Component contain radio-active substances	No used
Electrolyte capacitors (height > 25mm, diameter > 25mm)	Product has electrolyte capacitors (height >25mm, diameter > 25mm)

## 3. Tools Required

List the type and size of the tools that would typically can be used to disassemble the product to a point where components and materials requiring selective treatment can be removed.

Tool Description:

- Screwdriver
- Scraper Bar
- Penknife
- Soldering iron and absorber