

1. Disassembly Procedures

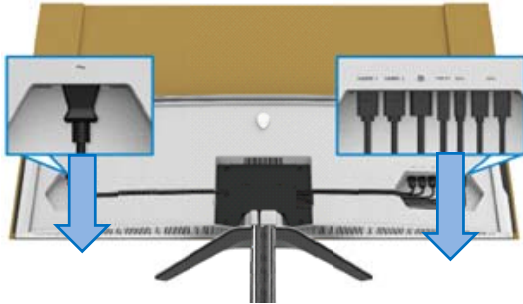
S1 Turn off the monitor

S2 Place the monitor on a soft cloth or cushion

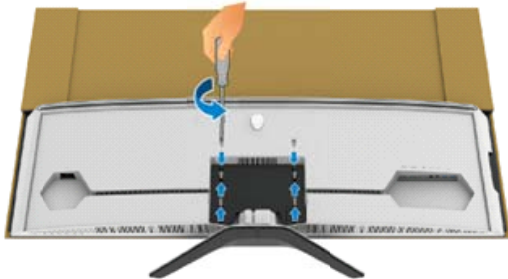
Carefully slide and remove the Cable Cover from the monitor.



S3 Disconnect the cables from the monitor and slide them out through the cable-management slot on Rear Cover



S4 Unlock 4 screws to disassemble the stand from the monitor.

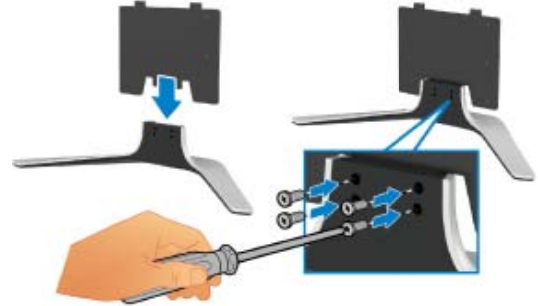


(Screw Torque:8~10kgf)

S5 Take off the stand from monitor

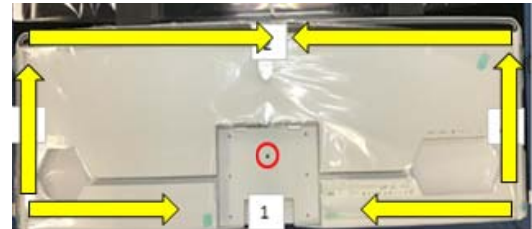


S6 Unlock 4 screws to disassemble the mounting bracket and take off the mounting bracket from the stand



(Screw Torque:8~10kgf)

S7 Unlock 1 RC screws



(Screw Torque:4~5kgf)

S8 Use hands or scraper bar to disassemble Rear Cover from the corner of monitor

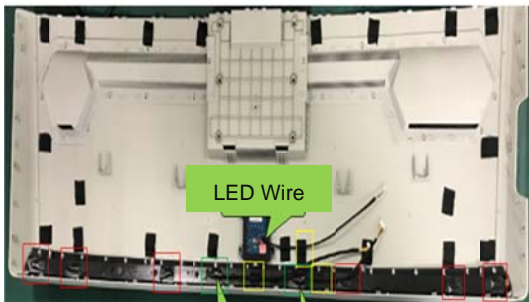


S9 Take off Rear Cover from the monitor



S10 Tear off mylars and tapes from Rear Cover (See red, green and yellow mark)

Unplug long Light Bar wire and short Light Bar wire from Light Bar

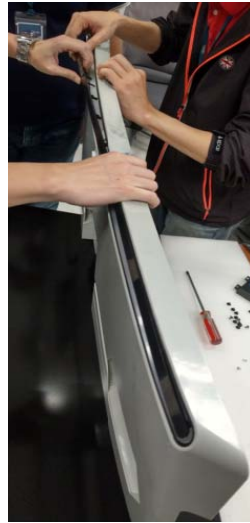


S11 Unlock 12 screws on Rear Cover to disassemble LIGHT BAR LENS and Rear Cover

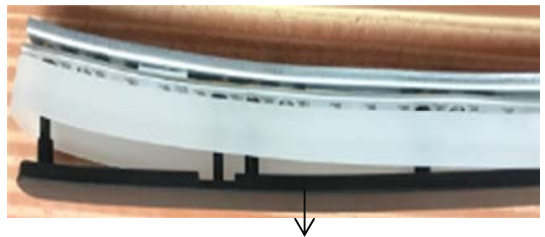


(Screw Torque:4~5kgf)

S12 Take off LIGHT BAR LENS from Rear Cover



S13 Disassemble Black Strip from LIGHT BAR LENS



S14 Unlock 12 screws on LIGHT BAR LENS



(Screw Torque:4~5kgf)

S15 Disassemble Light Bar BKT from LIGHT BAR LENS



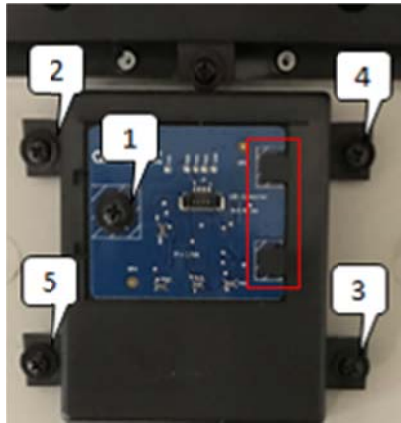
- S16** Disassemble Light Bar L and Light Bar R from LIGHT BAR LENS



- S17** Unlock 5 screws to disassemble LED BD and Cover Logo Box

Take off Cover Logo Box from Rear Cover

Take off LED BD from Cover Logo Box

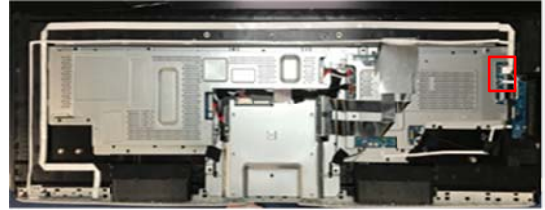


(Screw Torque:4~5kgf)

- S18** Tear off the adhesive tape
Pull out LED wire and 2 Light Bar Wires from I/F BD



- S19** Pull out IR FFC Cable and CTRL FFC Cable from I/F BD and tear off them from the Middle Frame



- S20** Unlock 5 CTRL screws to take off CTRL BD module from Middle Frame



(Screw Torque:1.3~1.8kgf)

- S21** Pull out CTRL FFC Cable from CTRL BD



- S22** Unlock 2 IR screws to disassemble IR BD from middle frame



(Screw Torque:1.3~1.8kgf)

- S23** Unlock 9 CTRL BD Screws



(Screw Torque:1.3~1.8kgf)

S24 Disassemble PWR BTN and OSD BTN from CTRL BD

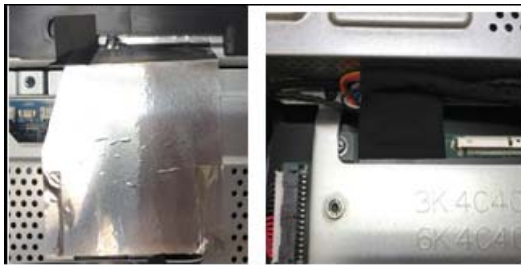


S25 Remove all tapes from all wires

Remove AL tape from SHD and remove AL Mylar from SHD

Pull out all wires from all connectors

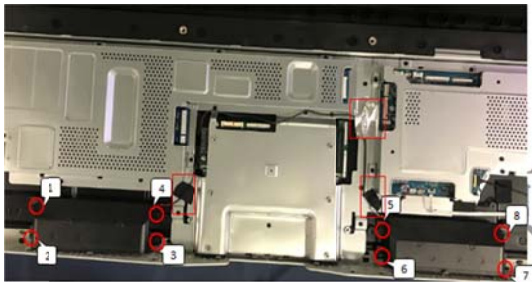
Pull out 2 FFC cable from I/F BD and Panel



S26 Tear off AL tape from SPK wire

Unlock 8 SPK screws

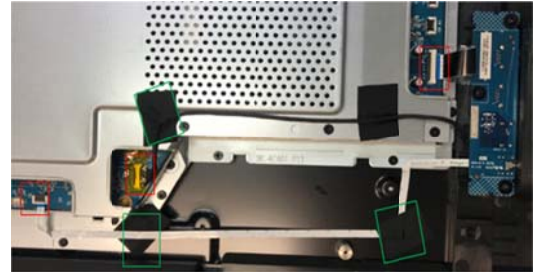
Disassemble SPK from mid-frame



(Screw Torque:4~5kgf)

S27 Tear off all adhesive from USB wire and FFC Cable

Pull out all wires from I/F BD

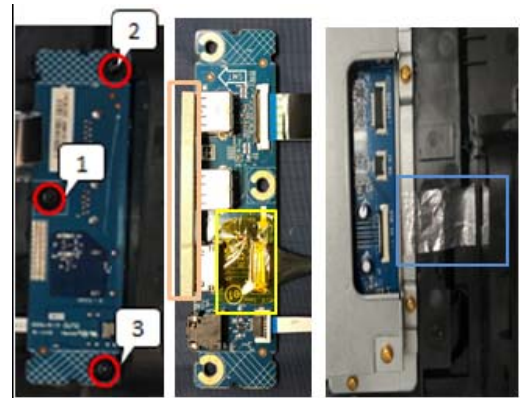


S28 Unlock 3 USB screws

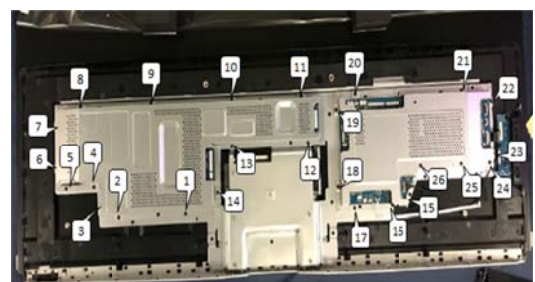
Tear off a yellow tape and Gasket from USB BD

Pull out USB wires and FFC Cable from USB BD.

Tear off AL tape from Middle Frame and SHD

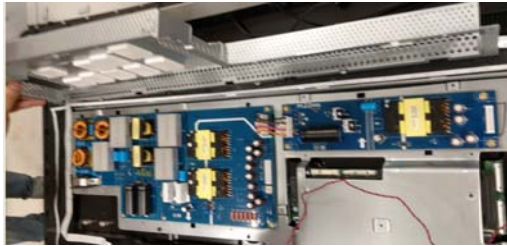


S29 Unlock 26 SHD screws



(Screw Torque:4~5kgf)

S30 Take off SPS BD SHD and I/F BD SHD form the BKT



S31 Unlock 2 I/O screws and disassemble I/O SHD from I/F BD



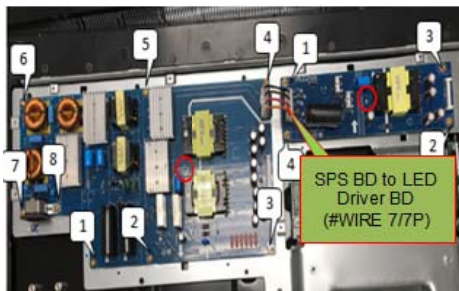
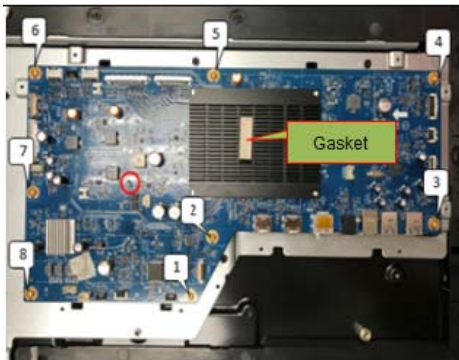
(Screw Torque:4~5kgf)

S32 Remove Gasket from I/F BD

Pull out connect wire from SPS BD and LED Driver BD

Unlock 20 PCBA screws

Disassemble Power BD, LED Driver BD and I/F BD from BK

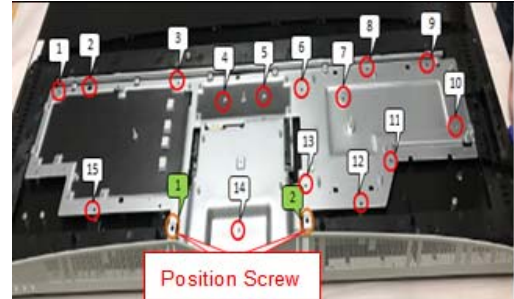


(Screw Torque:7.5~9.5kgf)

S33 Unlock 15 BKT screws

Unlock 2 position screws

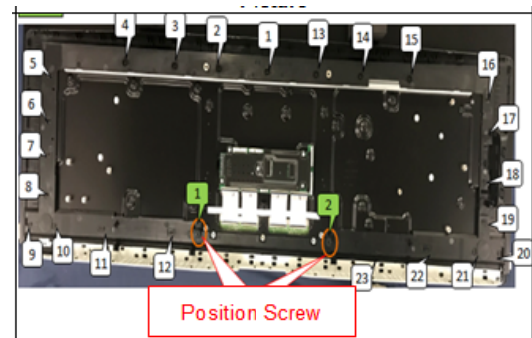
Disassemble BKT from Panel



(Screw Torque:4~5kgf)

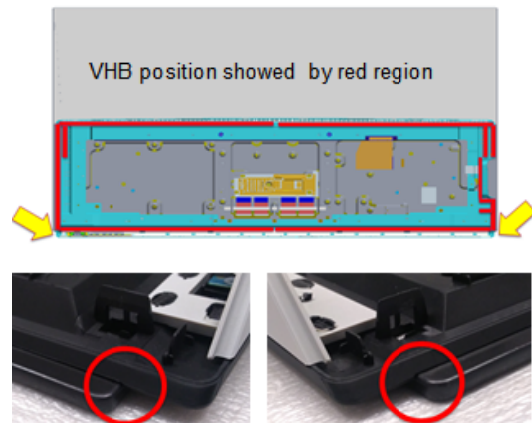
S34 Unlock 23 Middle Frame screws

Unlock 2 position screws

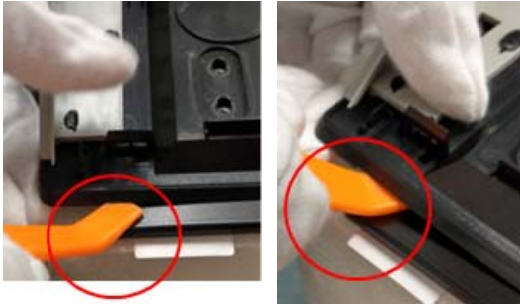


(Screw Torque:4~5kgf)

S35 Use scraper bar to disassemble Middle Frame and Panel from the steps at the corner in bottom side



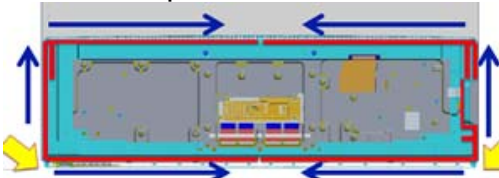
- S36** Carefully insert the scraper bar into the gap between Middle Frame and panel



- S38** Take off the Middle Frame from the panel and Clear the residual VHB tapes on the panel



- S37** Follow the order to slowly move the scraper bar to disassemble middle frame from panel

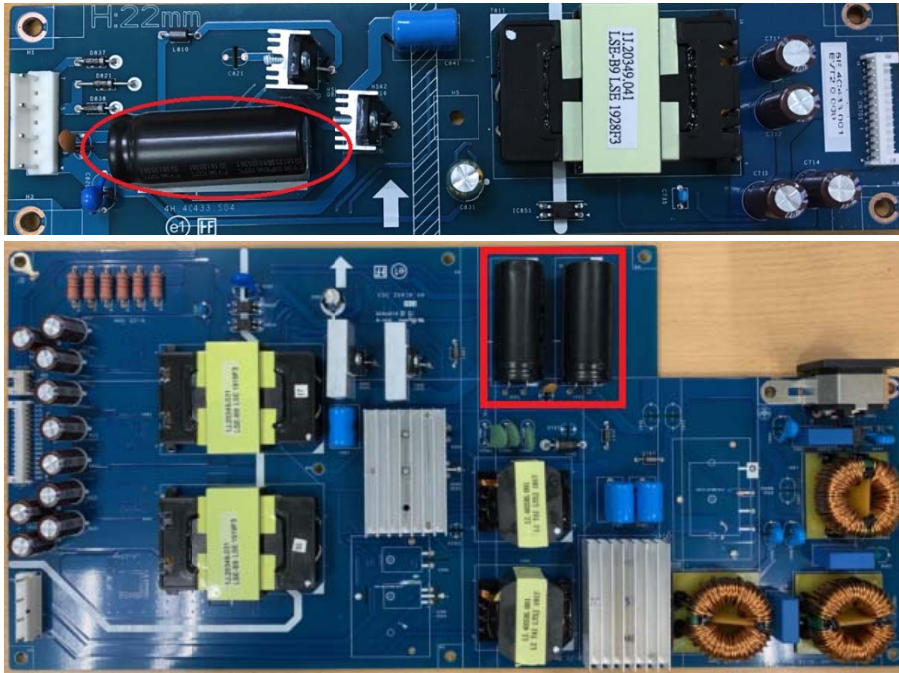


Notice:

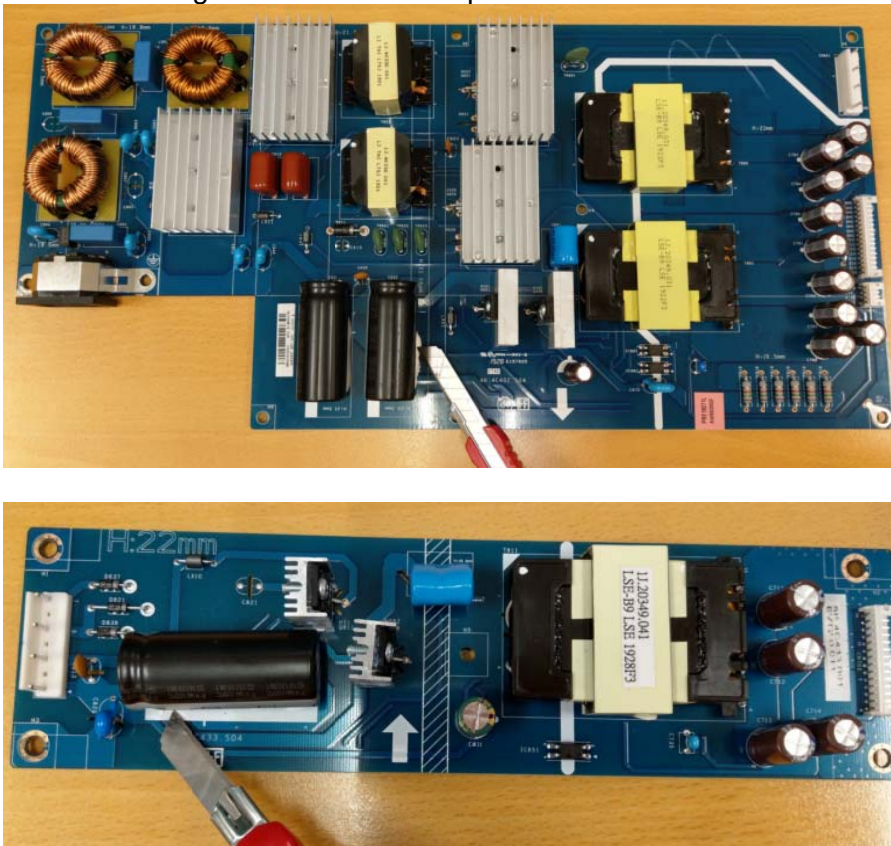
You can pull up the middle frame by hands to expand the gap when disassembling. Do NOT bend the panel to avoid from breaking the panel



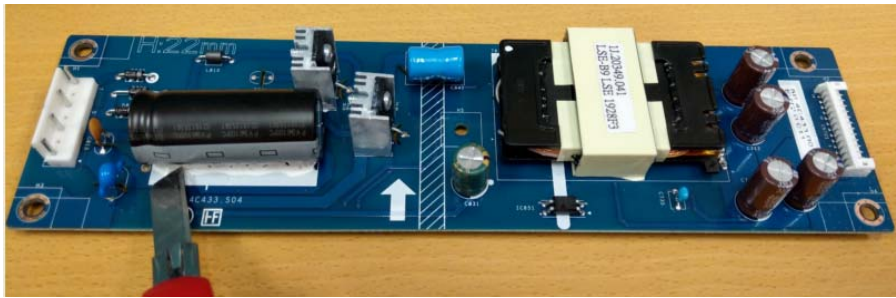
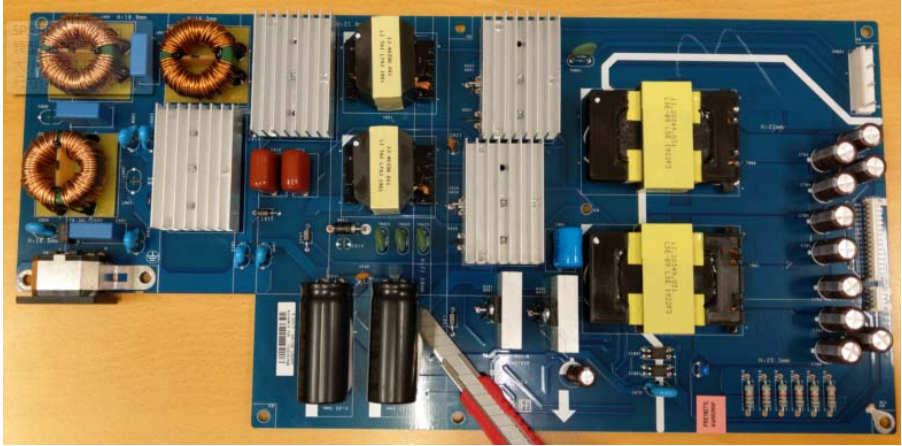
S39 Remove electrolyte capacitors (red mark) from printed circuit boards



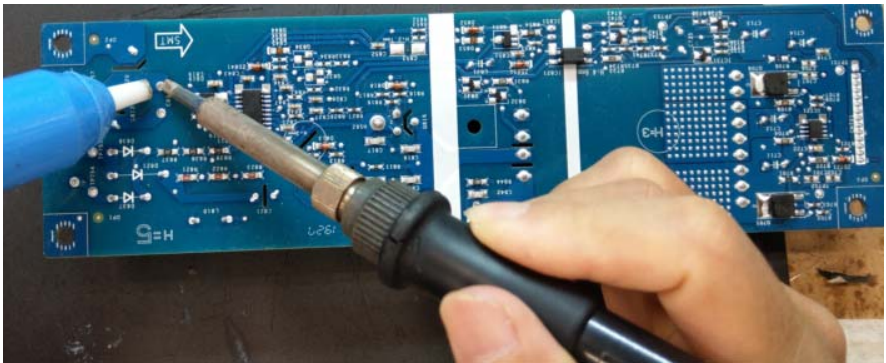
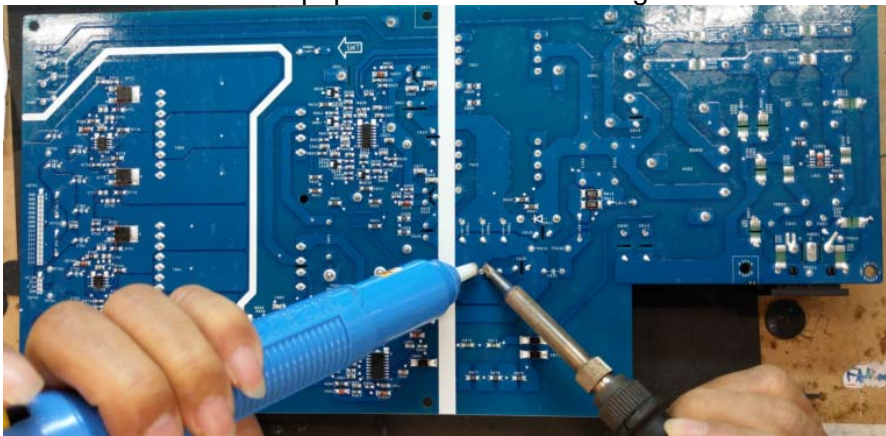
S39-1 Cut the glue between bulk cap. and PCB with a knife



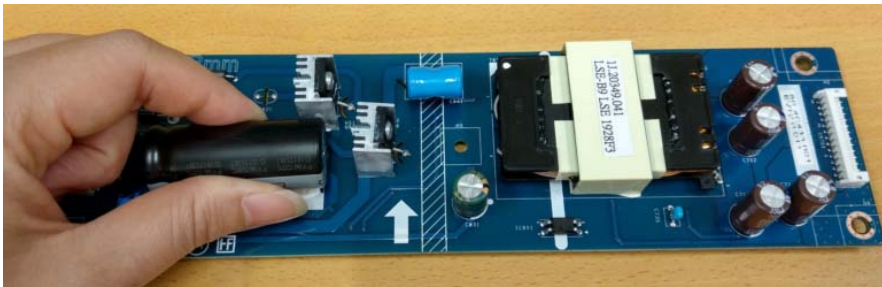
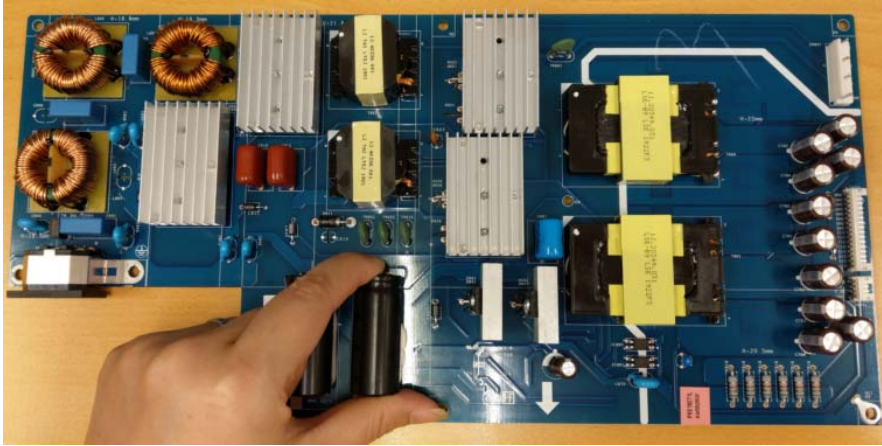
S39-2 Ensure cutting path within the glue, don't touch bulk cap. or PCB



S39-3 Take out bulk cap. pin solder with soldering iron and absorber



S39-4 Lift the bulk cap. up and away from the PCB



2. Product material information

The following substances, preparations, or components should be disposed of or recovered separately from other WEEE in compliance with Article 4 of EU Council Directive 75/442/EEC.

Capacitors / condensers (containing PCB/PCT)	No used
Mercury containing components	No used
Batteries	No used
Printed circuit boards (with a surface greater than 10 square cm)	Product has printed circuit boards (with a surface greater than 10 square cm)
Component contain toner, ink and liquids	No used
Plastic containing BFR	No used
Component and waste contain asbestos	No used
CRT	No used
Component contain CFC, HCFC, HFC and HC	No used
Gas discharge lamps	No used
LCD display > 100 cm ²	Product has an LCD greater than 100 cm ²
External electric cable	Product has external cables
Component contain refractory ceramic fibers	No used
Component contain radio-active substances	No used
Electrolyte capacitors (height > 25mm, diameter > 25mm)	Product has electrolyte capacitors (height >25mm, diameter > 25mm)

3. Tools Required

List the type and size of the tools that would typically can be used to disassemble the product to a point where components and materials requiring selective treatment can be removed.

Tool Description:

- Screwdriver
- Scraper Bar
- Penknife
- Soldering iron and absorber