

## 1. Disassembly Procedures

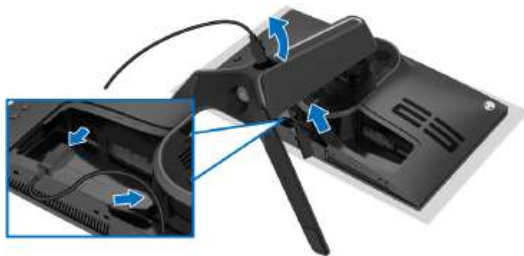
**S1** Turn off power

**S2** Place the monitor on a soft cloth or cushion

Carefully slide and remove the I/O cover from the monitor.



**S3** Disconnect the cables from the monitor and slide them out through the cable-management slot on the stand riser



**S4** Press and hold the stand release button



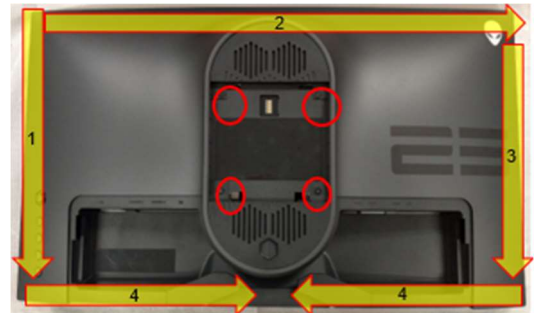
**S5** Lift the stand up and away from the monitor.



**S6** Unlock 4 screws on rear cover

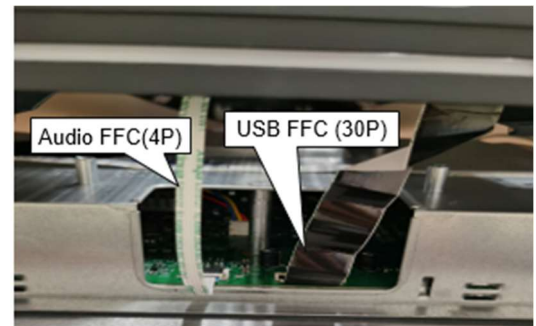
Use hands or scraper bar to disassemble Rear Cover from the monitor.

**Notice the disassembly order:**  
Left Side=> Top Side=>Right Side=>Bottom Side



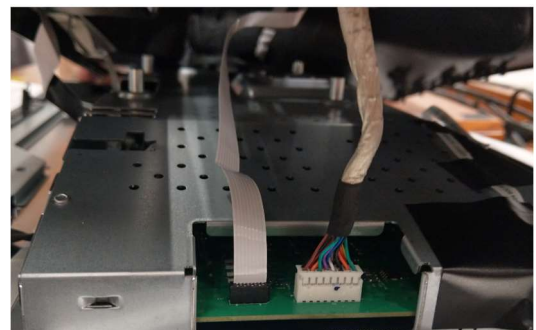
(Screw Torque: 8-10 kgf)

**S7** Remove USB FFC and Audio FFC from I/F BD

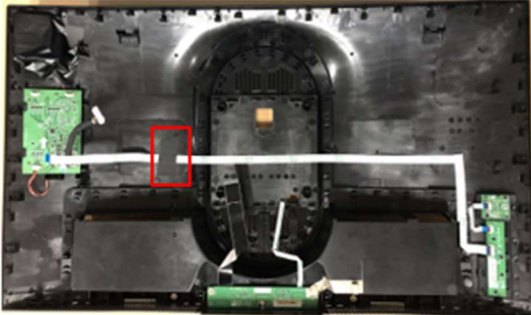


**S8** Disconnect LED Driver BD wire and CTRL FFC cable from I/F BD

Take off Rear Cover



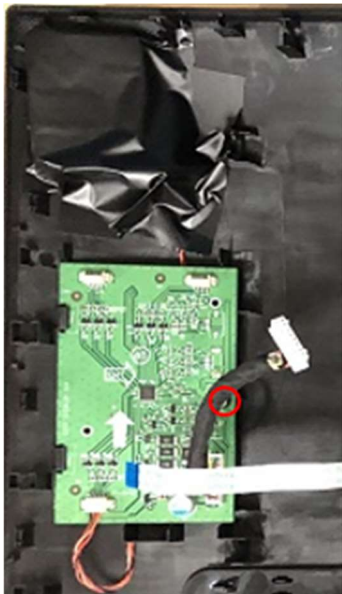
- S9** Tear off a tape from CTRL FFC cable on Rear Cover



- S12** Tear off "MYLAR HEAD LOGO" from cover LOGO LENS



- S10** Remove all cables from LED Driver BD  
Unlock 1 screw and disassemble LED Driver BD from Rear Cover



- S13** Disconnect LED BD wire from LED BD  
Disassemble LED BD from Rear Cover



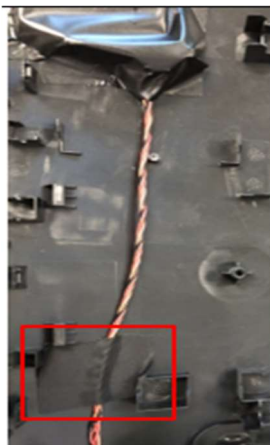
- S14** Remove a conductive foam from conductive cloth



- S15** Remove a conductive cloth from the right USB screw and Rear Cover



- S11** Tear off an adhesive tape from LED BD wire on Rear Cover



- S16** Unlock 2 screws to disassemble USB BD from Rear Cover



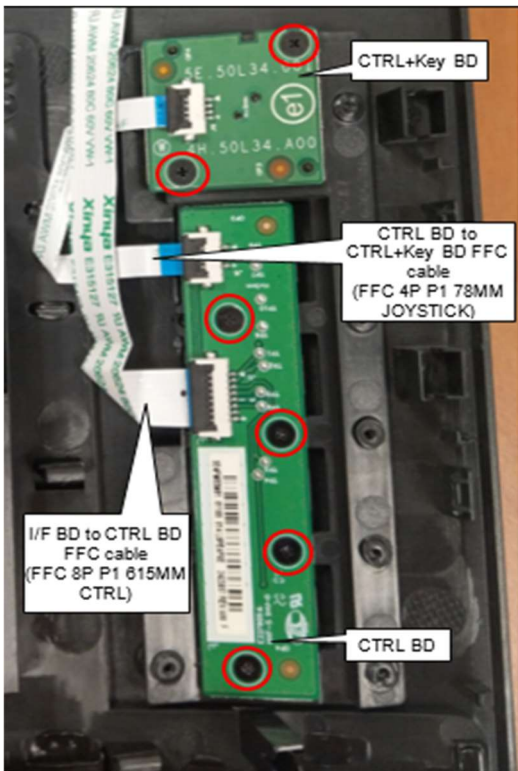
(Screw Torque: 4.5±0.5 kgf)

**S17** Disconnect USB FFC and Audio FFC from USB BD



**S18** Remove FFC cable from Rear Cover, CTRL BD and CTRL+KEY BD

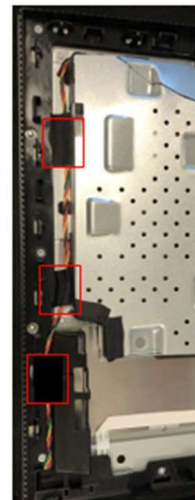
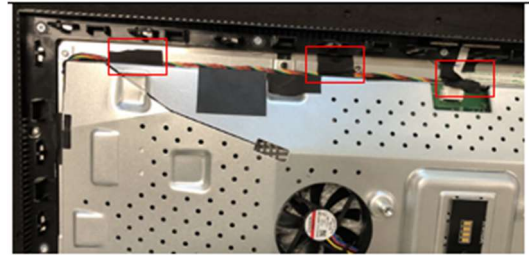
Unlock 6 screws to disassemble CTRL BD and CTRL+KEY BD from Rear Cover



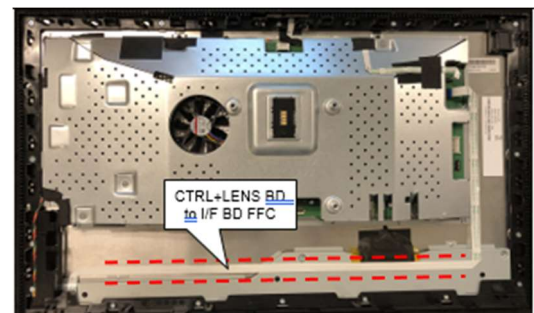
(Screw Torque: 2.0±0.5 kgf)

**S19** Tear off 6 tapes on Backlight Wire

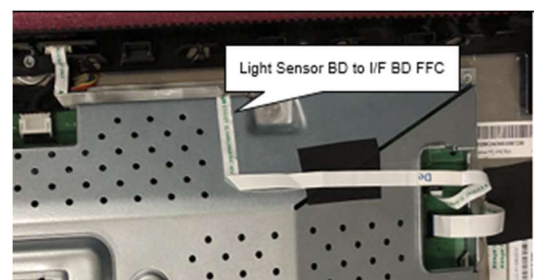
Disconnect Backlight Wire from I/F BD



**S20** Disconnect "CTRL+LENS BD FFC" from I/F BD and remove it from Panel and Main SHD

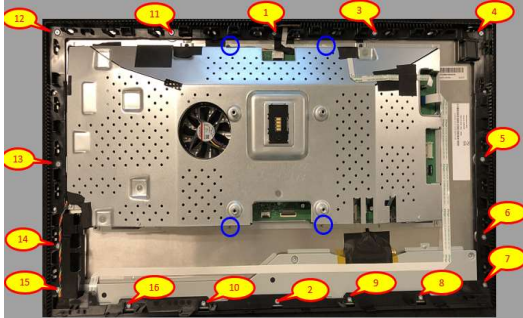


**S21** Disconnect Light Sensor BD FFC from I/F BD and remove it from Panel and Main SHD



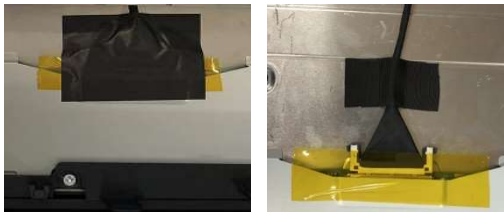
- S22** Unlock MF screw\*16 to disassemble the Middle Frame from Panel (Yellow Mark)

Unlock 4 screws to disassemble Main SHD from Panel (Blue Mark)

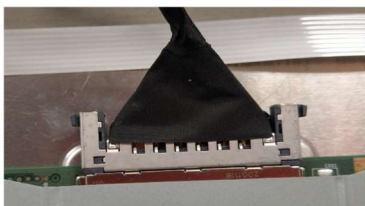


(Screw Torque-MF:  $4.5 \pm 0.5$  kgf)  
(Screw Torque-Main SHD:  $4.0 \pm 0.5$  kgf)

- S23** Tear off an acetate tape and a tensile tape from EDP cable

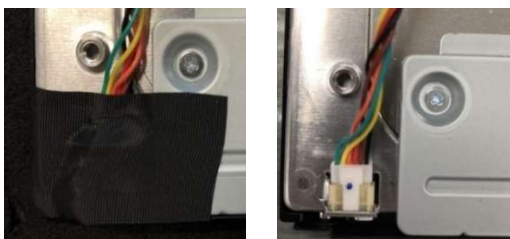


- S24** Disconnect EDP cable from Panel  
Take off Main SHD from Panel



- S25** Tear off the adhesive tape from the connector of Backlight wire

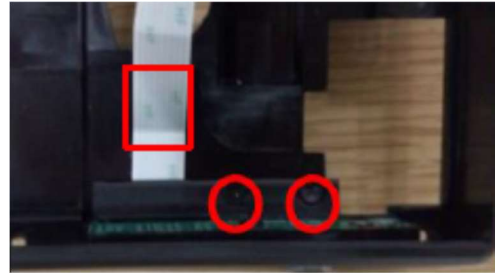
Disconnect Backlight Wire from Panel



- S26** Disassemble Light Sensor BD from Middle Frame

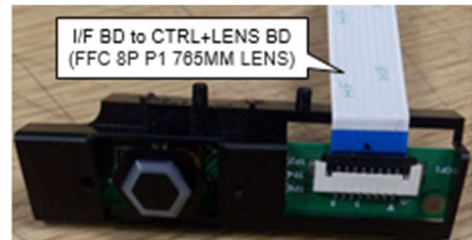


- S27** Unlock 2 screws to disassemble Power Button module from Middle Frame



(Screw Torque:  $1.1 \pm 0.1$  kgf)

- S28** Disconnect FFC cable from "CTRL+LENS BD" (Power CTRL BD)



- S29** Tear off "MYLAR PWR-LENS" from "CTRL+LENS BD" (Power CTRL BD)



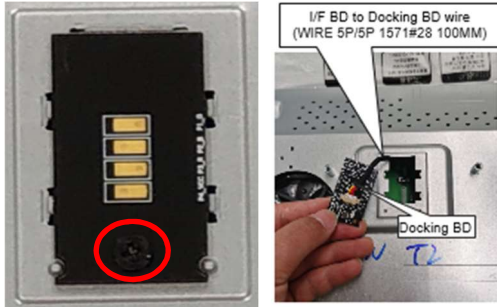
- S30** Unlock 2 screws to disassemble "CTRL+LENS BD" (Power CTRL BD) from Power Button



(Screw Torque:  $2 \pm 0.5$  kgf)

- S31** Unlock 1 screw to disassemble Docking BD from Main SHD

Disassemble wire from Docking BD



(Screw Torque: 8.5±1.0kgf)

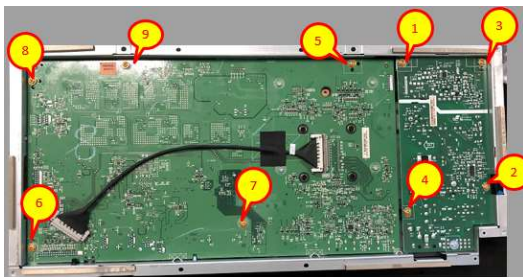
- S32** Disassemble Safety mylar from Main SHD



- S33** Tear off an adhesive tape from EDP cable on I/F BD

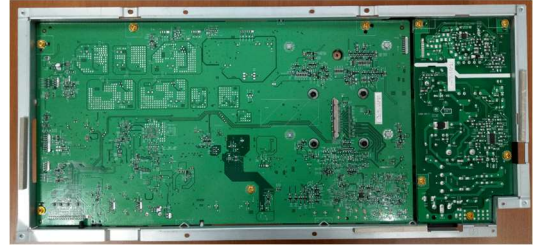
Disconnect EDP cable from I/F BD

Unlock 9 PCBA screws to disassemble I/F BD and SPS BD



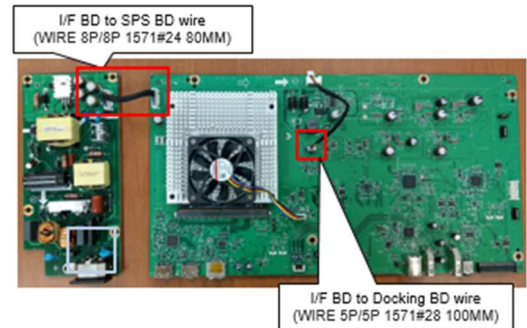
(Screw Torque: 8.5±1kgf)

- S34** Disassemble I/F BD and SPS BD from Main SHD

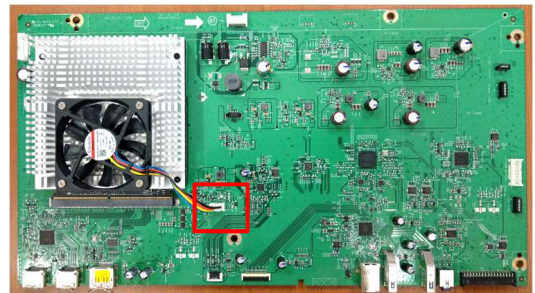


- S35** Disconnect I/F BD to Docking BD wire from I/F BD

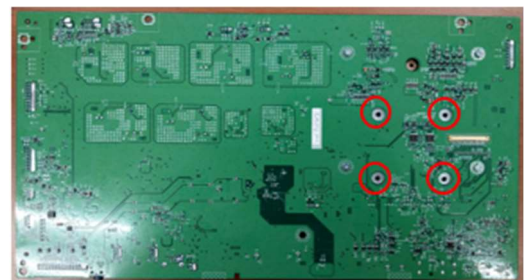
Disconnect wire from I/F BD and SPS BD



- S36** Disconnect Fan Cable from I/F BD

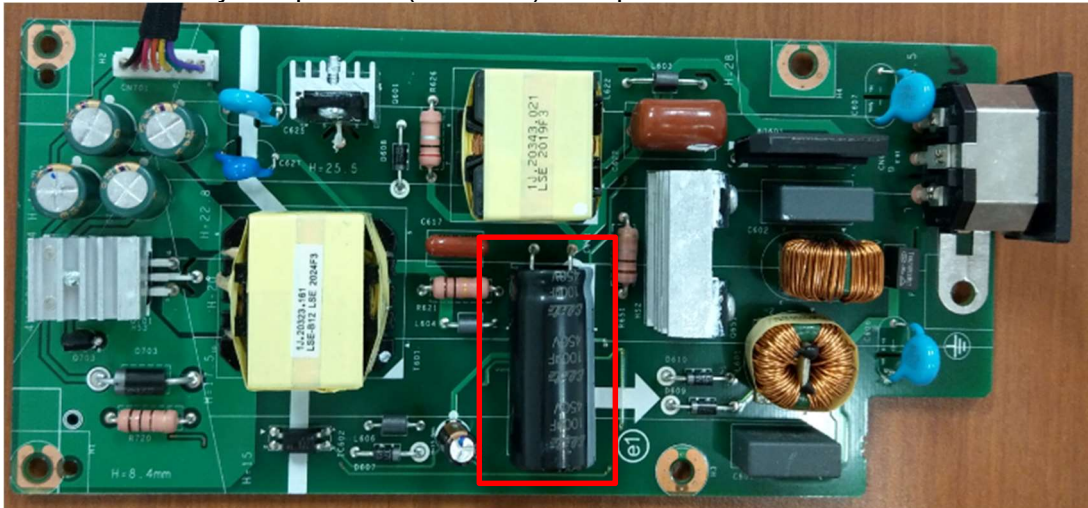


- S37** Unlock 4 screws to disassemble G-SYNC+Heatsink Module from I/F BD

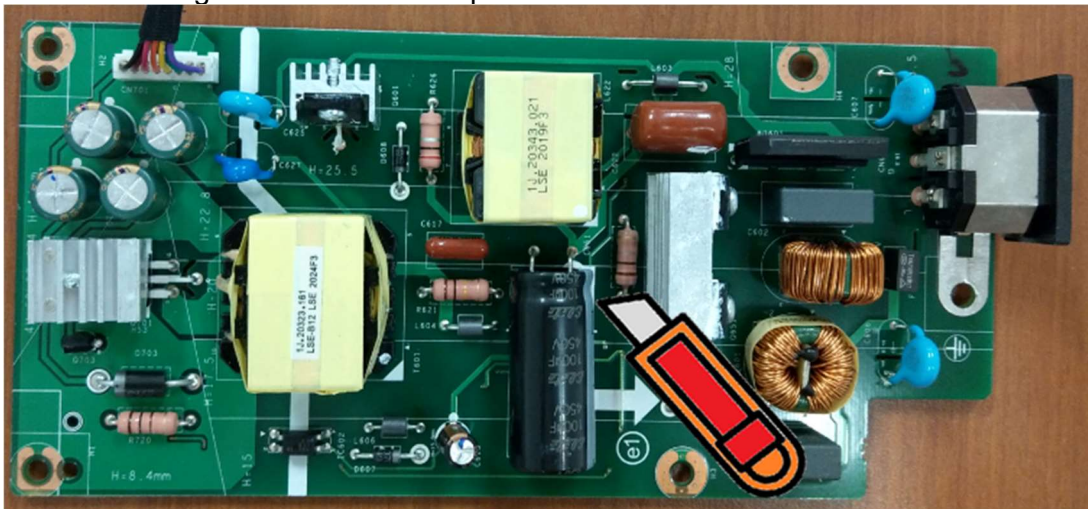


(Screw Torque: 4.0±0.5 kgf)

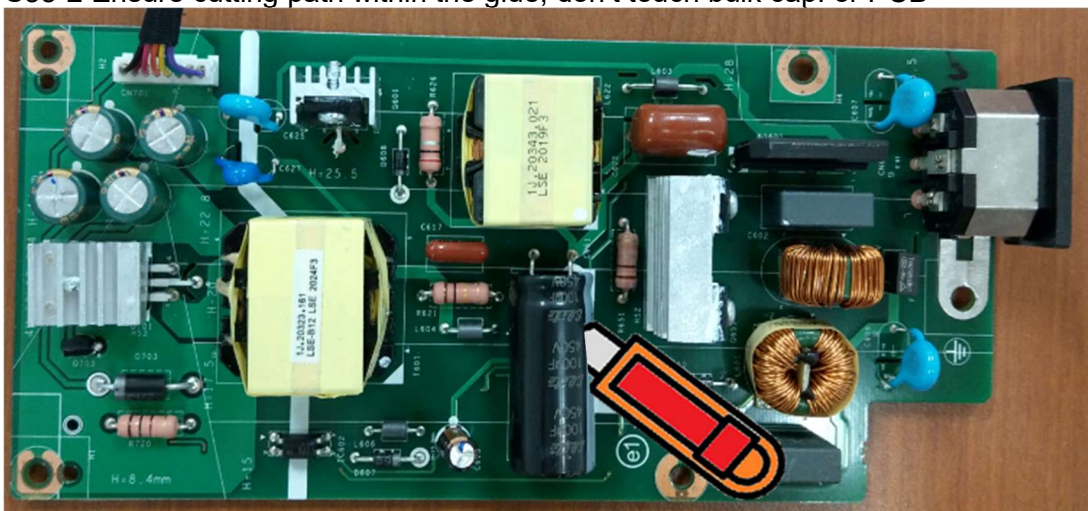
**S38** Remove electrolyte capacitors (red mark) from printed circuit boards



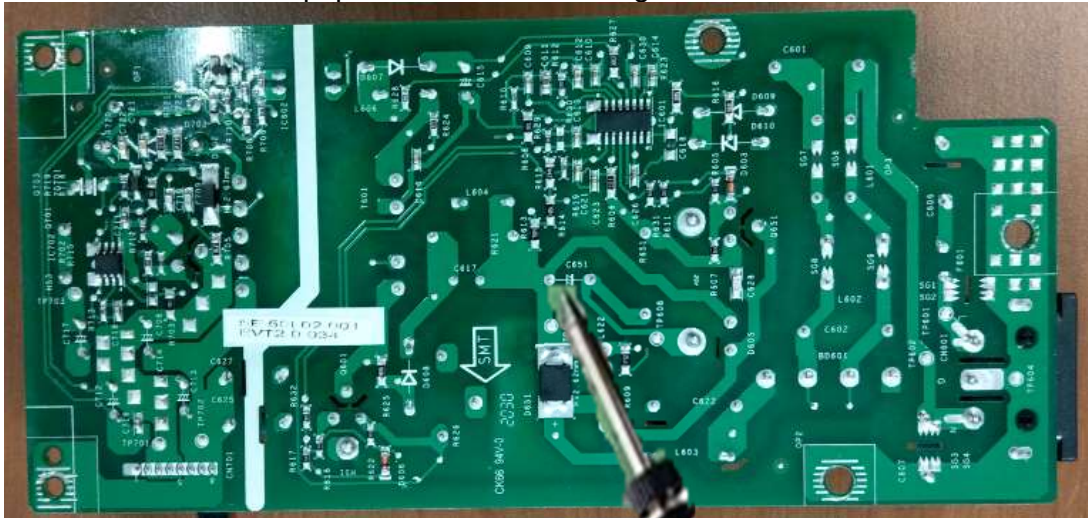
**S38-1** Cut the glue between bulk cap. and PCB with a knife



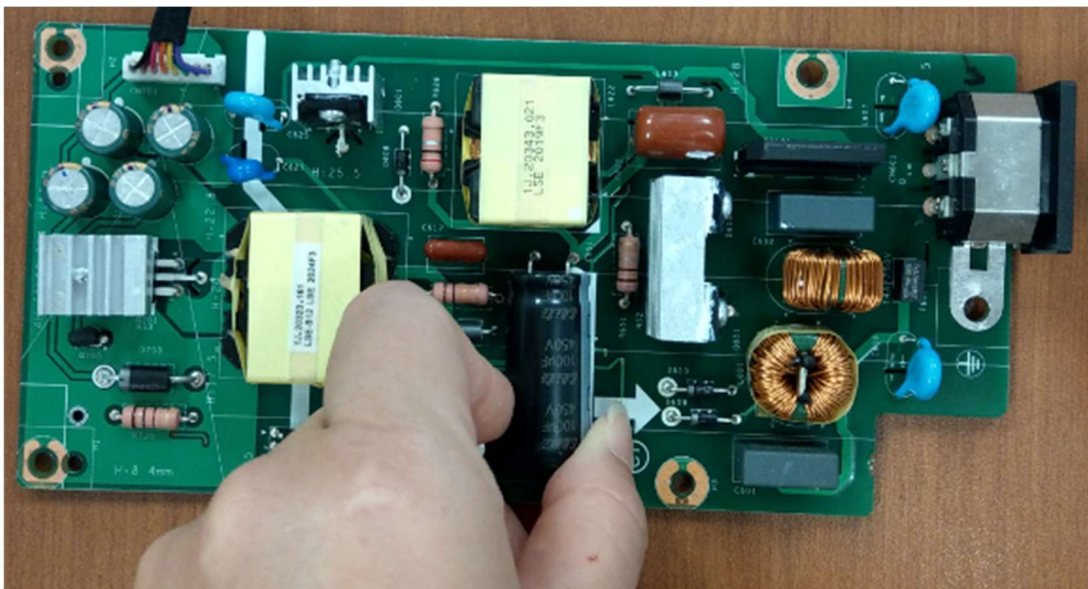
**S38-2** Ensure cutting path within the glue, don't touch bulk cap. or PCB



S38-3 Take out bulk cap. pin solder with soldering iron and absorber



S39-4 Lift the bulk cap. up and away from the PCB



## 2. Product material information

The following substances, preparations, or components should be disposed of or recovered separately from other WEEE in compliance with Article 4 of EU Council Directive 75/442/EEC.

Capacitors / condensers (containing PCB/PCT)	No used
Mercury containing components	No used
Batteries	No used
Printed circuit boards (with a surface greater than 10 square cm)	Product has printed circuit boards (with a surface greater than 10 square cm)
Component contain toner, ink and liquids	No used
Plastic containing BFR	No used
Component and waste contain asbestos	No used
CRT	No used
Component contain CFC, HCFC, HFC and HC	No used
Gas discharge lamps	No used
LCD display > 100 cm <sup>2</sup>	Product has an LCD greater than 100 cm <sup>2</sup>
External electric cable	Product has external cables
Component contain refractory ceramic fibers	No used
Component contain radio-active substances	No used
Electrolyte capacitors (height > 25mm, diameter > 25mm)	Product has electrolyte capacitors (height >25mm, diameter > 25mm)

## 3. Tools Required

List the type and size of the tools that would typically can be used to disassemble the product to a point where components and materials requiring selective treatment can be removed.

Tool Description:

- Screwdriver
- Scraper Bar
- Penknife
- Soldering iron and absorber