

# Dell S2319HS/S2719HS

## User's Guide

**Model:** S2319HS/S2719HS  
**Regulatory model:** S2319HSSt/S2719HSSt





**NOTE:** A NOTE indicates important information that helps you make better use of your computer.



**CAUTION:** A CAUTION indicates potential damage to hardware or loss of data if instructions are not followed.



**WARNING:** A WARNING indicates a potential for property damage, personal injury, or death.

**Copyright © 2018 Dell Inc. or its subsidiaries. All rights reserved.** Dell, EMC, and other trademarks are trademarks of Dell Inc. or its subsidiaries. Other trademarks may be trademarks of their respective owners.

2018 – 07

Rev. A00

# Contents

<b>About your monitor</b>	<b>5</b>
Contents of the box	5
Product features	6
Identifying parts and controls	7
Monitor specifications	11
Plug-and-play	17
LCD monitor quality and pixel policy	17
<b>Setting up the monitor</b>	<b>18</b>
Attaching the stand	18
Using the tilt, swivel, and vertical extension	19
Configuring the rotate feature from the Display Settings of your computer	20
Connecting your monitor	21
Organizing your cables	23
Removing the monitor stand	23
Wall mounting (Optional)	24
<b>Operating the monitor</b>	<b>25</b>
Turning on the monitor	25
Using the front panel controls	25




Using the On-Screen Display (OSD) menu . . . . .	28
<b>Troubleshooting . . . . .</b>	<b>47</b>
Self-test . . . . .	47
Built-in diagnostics. . . . .	49
Common problems. . . . .	50
Product specific problems . . . . .	52
Universal Serial Bus (USB) specific problems . . . . .	52
<b>Appendix. . . . .</b>	<b>54</b>
Safety instructions . . . . .	54
FCC notices (U.S. only) and other regulatory information . . . . .	54
Contacting Dell . . . . .	54
Setting up your monitor. . . . .	55
Maintenance guidelines. . . . .	57
Pin assignments. . . . .	58



# About your monitor


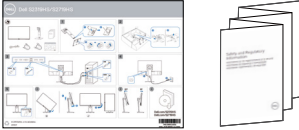
## Contents of the box

Your monitor ships with the components shown below. Ensure that you have received all the components and see [Contacting Dell](#) if anything is missing.

 **NOTE:** Some components may be optional and may not ship with your monitor. Some features may not be available in certain countries.

	Monitor
	Stand riser
	Stand base
	Power cable (varies by country)
	USB 3.0 upstream cable (enables the USB ports on the monitor)




	HDMI cable
	<ul style="list-style-type: none"> <li>• Quick Setup Guide</li> <li>• Safety, Environmental, and Regulatory Information</li> </ul>

## Product features

The **Dell S2319HS/S2719HS** monitor has an active matrix, Thin-Film Transistor (TFT), liquid crystal display (LCD), and LED backlight. The monitor features include:

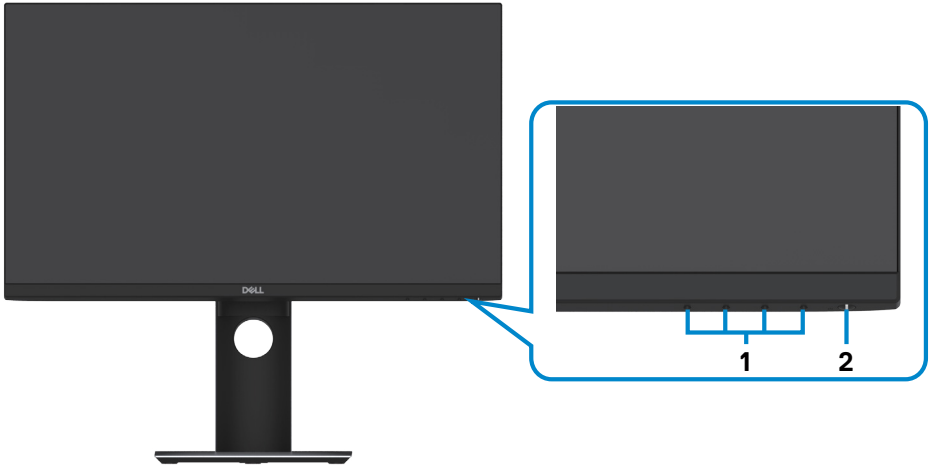
- **S2319HS:** 58.4 cm (23.0-inch) active area display, measured diagonally.
- **S2719HS:** 68.6 cm (27-inch) active area display, measured diagonally.
- Up to 1920 x 1080 (16:9) resolution, with full screen support at lower resolutions.
- Color gamut of 72% NTSC.
- Tilt, swivel, height adjustment and pivot functionality.
- Removable pedestal and Video Electronics Standards Association (VESA™) 100 mm mounting holes for flexible mounting solutions.
- Digital connectivity with DisplayPort and HDMI.
- Equipped with one USB upstream port and four USB downstream ports.
- Plug and play capability if supported by your system.
- On-Screen Display (OSD) adjustments for easy setup and screen optimization.
- Security-lock slot.
- Stand lock.
- 0.3 W standby power when in the sleep mode.
- Optimize eye comfort with a flicker-free screen.

 **NOTE:** Possible long-term effects of blue light emission from the monitor may cause damage to the eyes, including eye fatigue or digital eye strain. ComfortView feature is designed to reduce the amount of blue light emitted from the monitor to optimize eye comfort.



# Identifying parts and controls

## Front view



Label	Description	Use
1	Function buttons	Use the function buttons to adjust items in the OSD (For more information, see <a href="#">Using the front panel controls</a> )
2	Power on/off button (with LED indicator)	Use the power button to turn the monitor On and Off.



## Back view



Label	Description	Use
1	VESA mounting holes (100 mm x 100 mm-behind attached VESA cover)	Wall mount monitor using VESA-compatible wall mount kit (100 mm x 100 mm).
2	Stand release button	Releases stand from monitor.
3	Security lock slot	Secures monitor with security cable lock (sold separately).
4	Barcode, serial number, and Service Tag label	Refer to this label if you need to contact Dell for technical support.
5	Cable management slot	Use to organize cables by placing them through the slot.





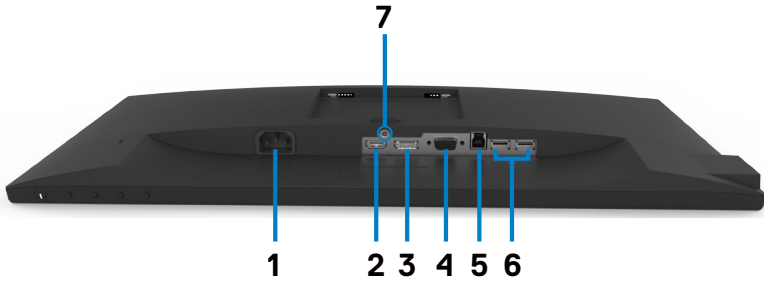
## Side view



Label	Description	Use
1	USB downstream ports (2)	Connect your USB device. <b>NOTE:</b> You can only use this connector after you have connected the USB cable to the computer and USB upstream connector on the monitor.



## Bottom view



Label	Description	Use
1	AC power connector	To connect the monitor power cable.
2	HDMI connector	Connect your computer with HDMI cable.
3	DP connector	Connect your computer with DP cable (optional).
4	VGA connector	Connect your computer with VGA cable (optional).
5	USB upstream port	Connect the USB cable that comes with your monitor to the computer. Once this cable is connected, you can use the USB downstream connectors on the monitor.
6	USB downstream ports (2)	Connect your USB device. You can use these ports only after you have connected the USB cable from the computer to the monitor.
7	Stand lock	Secure the stand to the monitor using a M3x6 mm screw (screw not included).



# Monitor specifications

Model	S2319HS	S2719HS
Screen type	Active matrix - TFT LCD	
Panel Type	In-plane switching technology	
Aspect ratio	16:9	
Viewable image dimensions		
Diagonal	58.4 cm (23.0 in.)	68.6 cm (27.0 in.)
Active Area		
Horizontal	509.18 mm (20.05 in.)	597.88 mm (23.54 in.)
Vertical	286.42 mm (11.28 in.)	336.31 mm (13.24 in.)
Area	145839.33 mm <sup>2</sup> (226.05 in. <sup>2</sup> )	201073.02 mm <sup>2</sup> (311.67 in. <sup>2</sup> )
Pixel pitch	0.265 mm x 0.265 mm	0.311 mm x 0.311 mm
Pixel per inch (PPI)	96	82
Viewing angle		
Horizontal	178° (typical)	
Vertical	178° (typical)	
Brightness	250 cd/m <sup>2</sup> (typical)	300 cd/m <sup>2</sup> (typical)
Contrast ratio	1,000 to 1 (typical)	
Display screen coating	Anti-Glare with 3H hardness	
Backlight	LED edgelight system	
Response Time (Gray to Gray)	5 ms (Fast mode) 8 ms (Normal mode)	
Color depth	16.7 million colors	
Color gamut	72% (CIE1931) <b>NOTE:</b> Color gamut (typical) is based on CIE1976 (82%) and CIE1931 (72%) test standards.	
Connectivity	<ul style="list-style-type: none"> <li>• one x HDMI 1.4 port (HDCP 1.4)</li> <li>• one x DP 1.2 port</li> <li>• one x VGA port</li> <li>• one x USB 3.0 upstream port</li> <li>• two USB 2.0 downstream ports (rear)</li> <li>• two USB 3.0 downstream ports (side)</li> </ul>	
Border width (edge of monitor to active area)	5.40 mm (Top/Left/Right) 19.86 mm (Bottom)	6.00 mm (Top/Left/Right) 20.70 mm (Bottom)



<b>Adjustability</b>	
Height adjustable stand Tilt Swivel Pivot	130 mm -5° to 21° -45° to 45° -90° to 90°
Dell Display Manager (DDM) Compatibility	Easy Arrange and other key features
Security	Security-lock slot (cable lock sold separately)

## Resolution specifications

<b>Model</b>	<b>S2319HS/S2719HS</b>
Horizontal scan range	30 khz to 83 khz (automatic)
Vertical scan range	56 Hz to 76 Hz (automatic)
Maximum preset resolution	1920 x 1080 at 60 Hz
Video display capabilities (VGA & DP & HDMI playback)	480i, 480p, 576i, 576p, 720p, 1080i, 1080p

## Preset display modes

Display Mode	Horizontal Frequency (kHz)	Vertical Frequency (Hz)	Pixel Clock (MHz)	Sync Polarity (Horizontal/ Vertical)
VESA, 640 x 480	31.5	60.0	25.2	-/-
VESA, 640 x 480	37.5	75.0	31.5	-/-
IBM, 720 x 400	31.5	70.0	28.3	-/+
VESA, 800 x 600	37.9	60.0	40.0	+/+
VESA, 800 x 600	46.9	75.0	49.5	+/+
VESA, 1024 x 768	48.4	60.0	65.0	-/-
VESA, 1024 x 768	60.0	75.0	78.8	+/+
VESA, 1152 x 864	67.5	75.0	108.0	+/+
VESA, 1280 x 1024	64.0	60.0	108.0	+/+
VESA, 1280 x 1024	80.0	75.0	135.0	+/+
VESA, 1600 x 900	60.0	60.0	108.0	+/+
VESA, 1920 x 1080	67.5	60.0	148.5	+/+



## Electrical specifications

<b>Model</b>	<b>S2319HS/S2719HS</b>
Video input signals	<ul style="list-style-type: none"> <li>• Digital video signal for each differential line Per differential line at 100 ohm impedance</li> <li>• VGA/DP/HDMI signal input support</li> </ul>
Input voltage/frequency/current	100-240 VAC / 50 or 60 Hz $\pm$ 3 Hz / 1.5 A (maximum)
Inrush current	120 V: 30 A (Max.) at 0 °C (cold start) 240 V: 60 A (Max.) at 0 °C (cold start)

## Physical characteristics

<b>Model</b>	<b>S2319HS</b>	<b>S2719HS</b>
Signal cable type	<ul style="list-style-type: none"> <li>• Digital: DisplayPort, 20 pins</li> <li>• Digital: HDMI, 19 pins</li> <li>• Analog: D-Sub, 15 pins</li> <li>• Digital: USB, 9 pins</li> </ul>	
Dimensions (with stand)		
Height (extended)	481.1 mm (18.94 in.)	524.3 mm (20.64 in.)
Height (compressed)	351.1mm (13.82 in.)	394.3 mm (15.52 in.)
Width	520.0 mm (20.47 in.)	609.9 mm (24.01 in.)
Depth	166.0 mm (6.54 in.)	185.0 mm (7.28 in.)
Dimensions (without stand)		
Height	311.7 mm (12.27 in.)	363.0 mm (14.29 in.)
Width	520.0 mm (20.47 in.)	609.9 mm (24.01 in.)
Depth	41.3 mm (1.63 in.)	42.8 mm (1.69 in.)
Stand dimensions		
Height (extended)	400.8 mm (15.78 in.)	418.4 mm (16.47 in.)
Height (compressed)	353.4 mm (13.91 in.)	371.0 mm (14.61 in.)
Width	206.0 mm (8.11 in.)	245.0 mm (9.65 in.)
Depth	166.0 mm (6.54 in.)	185.0 mm (7.28 in.)
Base	206.0 mm x 166.0 mm (8.11 in. x 6.54 in.)	245.0 mm x 185.0 mm (9.65 in. x 7.28 in.)



Weight		
Weight with packaging	7.00 kg (15.43 lb)	9.05 kg (19.95 lb)
Weight with stand assembly and cables	5.11 kg (11.27 lb)	6.67 kg (14.70 lb)
Weight without stand assembly (For wall mount or VESA mount considerations - no cables)	3.11 kg (6.86 lb)	4.35 kg (9.59 lb)
Weight of stand assembly	1.67 kg (3.68 lb)	1.93 kg (4.25 lb)

## Environmental characteristics

<b>Model</b>	<b>S2319HS/S2719HS</b>	
Compliant standards		
<ul style="list-style-type: none"> <li>• ENERGY STAR certified Monitor</li> <li>• RoHS Compliant</li> <li>• BFR/PVC Free monitor (excluding external cables)</li> <li>• Arsenic-Free glass and Mercury-Free for the panel only</li> </ul>		
Temperature		
Operating	0°C to 40°C (32°F to 104°F)	
Non-operating	<ul style="list-style-type: none"> <li>• Storage: -20 °C to 60 °C (-4 °F to 140 °F)</li> <li>• Shipping: -20 °C to 60 °C (-4 °F to 140 °F)</li> </ul>	
Humidity		
Operating	20% to 80% (non-condensing)	
Non-operating	<ul style="list-style-type: none"> <li>• Storage: 10% to 90% (non-condensing)</li> <li>• Shipping: 10% to 90% (non-condensing)</li> </ul>	
Altitude		
Operating	5,000 m (16,404 ft) (maximum)	
Non-operating	12,192 m (40,000 ft) (maximum)	
Thermal dissipation		
<b>S2319HS</b>	136.58 BTU/hour (maximum) 54.63 BTU/hour (typical)	
<b>S2719HS</b>	197.95 BTU/hour (maximum) 64.85 BTU/hour (typical)	



## Power Management Modes

If you have VESA's DPM-compliant video card or software installed in your PC, the monitor can automatically reduce its power consumption when not in use. This is referred to as power save mode<sup>1</sup>. If the computer detects input from the keyboard, mouse, or other input devices, the monitor automatically resumes functioning. The following table shows the power consumption and signaling of this automatic power saving feature.

### S2319HS

VESA modes	Horizontal sync	Vertical sync	Video	Power indicator	Power consumption
Normal operation	Active	Active	Active	White	40 W (maximum) <sup>2</sup> 16 W (typical)
Active-off mode	Inactive	Inactive	Off	White (Glowing)	Less than 0.3 W
Switch off	-	-	-	Off	Less than 0.3 W

Energy Star	Power Consumption
P <sub>ON</sub>	15.9 W <sup>3</sup>
E <sub>TEC</sub>	50.8 kWh <sup>4</sup>

### S2719HS

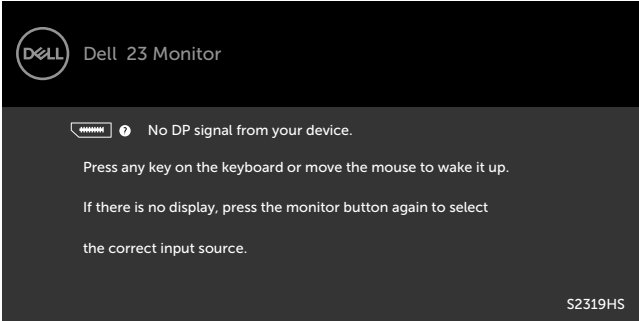
VESA modes	Horizontal sync	Vertical sync	Video	Power indicator	Power consumption
Normal operation	Active	Active	Active	White	58 W (maximum) <sup>2</sup> 19 W (typical)
Active-off mode	Inactive	Inactive	Off	White (Glowing)	Less than 0.3 W
Switch off	-	-	-	Off	Less than 0.3 W

Energy Star	Power Consumption
P <sub>ON</sub>	15.0 W <sup>3</sup>
E <sub>TEC</sub>	47.2 kWh <sup>4</sup>

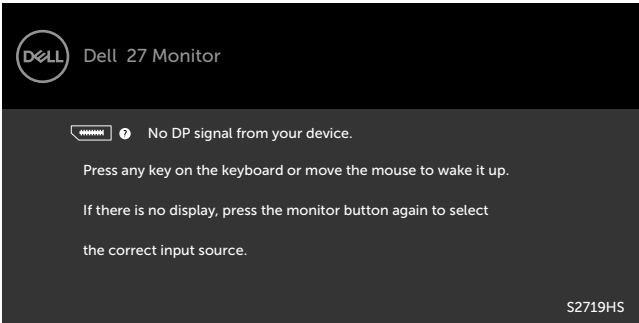


The OSD operates only in the normal operation mode. If you press any button in the active-off mode, one of the following message is displayed.

### S2319HS



### S2719HS



<sup>1</sup> Zero power consumption in OFF mode can only be achieved by disconnecting the AC mains cable from the monitor.

<sup>2</sup> Maximum power consumption with maximum luminance.

<sup>3</sup> Power consumption of on mode as defined in Energy Star 7.0 version.

<sup>4</sup> Total energy consumption in kWh as defined in Energy Star 7.0 version.

This document is informational only and reflects laboratory performance. Your product may perform differently, depending on the software, components and peripherals you ordered and shall have no obligation to update such information. Accordingly, the customer should not rely upon this information in making decisions about electrical tolerances or otherwise. No warranty as to accuracy or completeness is expressed or implied.

Activate the computer and the monitor to gain access to the OSD.

 **NOTE:** This monitor is **ENERGY STAR** -compliant.





## Plug-and-play

You can install the monitor in any Plug-and-Play-compatible system. The monitor automatically provides the computer system with its extended display identification data (EDID) using display data channel (DDC) protocols so that the computer can configure itself and optimize the monitor settings. Most monitor installations are automatic; you can select different settings if desired. For more information about changing the monitor settings, see [Operating the monitor](#).



## LCD monitor quality and pixel policy

During the LCD monitor manufacturing process, it is not uncommon for one or more pixels to become fixed in an unchanging state which are hard to see and do not affect the display quality or usability. For more information on LCD Monitor Pixel Policy, see Dell support site at: [www.dell.com/support/monitors](http://www.dell.com/support/monitors).



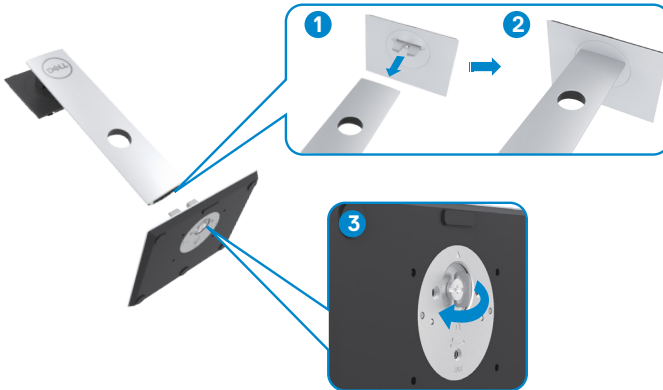
# Setting up the monitor

## Attaching the stand

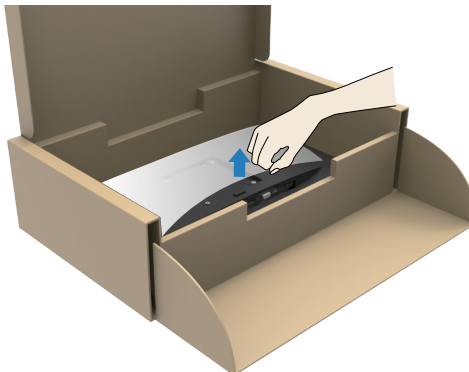
-  **NOTE:** The stand riser and stand base are not attached when the monitor is shipped from the factory.
-  **NOTE:** The following procedure is applicable for the stand that is shipped with your monitor. If you are connecting a third-party stand, see the documentation that shipped with the stand.

To attach the monitor stand:

- 1 Using the instructions printed on the packaging box, remove the stand from the cushion that secures it.
- 2 Align the tabs on the stand base with the slots on the stand riser and slide the stand riser into the stand base.
- 3 Open the latch at the bottom of the stand base, tighten the screw by turning it clockwise and then close the latch.

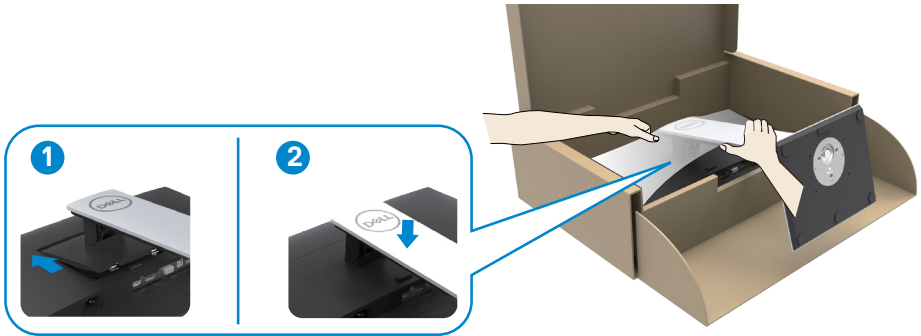


- 4 Lift the cover to access the VESA mount area at the back of the monitor.



5 Connect the stand assembly to the monitor.

- a. Align and slide the tabs on the top of the stand assembly into the slots at the back of the monitor.
- b. Press the stand down until it snaps into place.



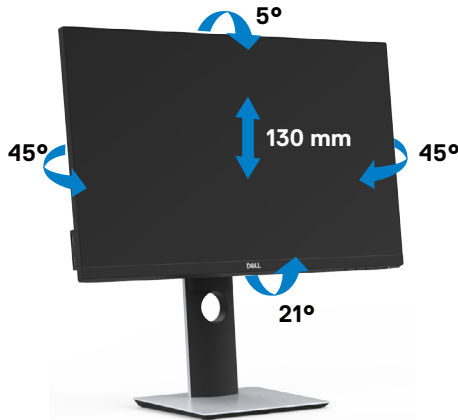
6 Lift the monitor along with the stand and place it in.

⚠ CAUTION: Lift the monitor carefully to prevent it from slipping or falling.

## Using the tilt, swivel, and vertical extension

**NOTE:** The following procedure is applicable for the stand that shipped with your monitor. For a third-party stand, see the documentation that shipped with the stand.

With the stand attached to the monitor, you can tilt the monitor for the most comfortable viewing angle.



## Rotating the monitor

**CAUTION:** Before you rotate the monitor, ensure the monitor is vertically extended and then tilt the monitor backwards to the maximum angle. This will avoid any potential damage to the bottom edge of the display.



- NOTE:** To use the Display Rotation function (Landscape versus Portrait view) with your Dell computer, you require an updated graphics driver that is not included with this monitor. To download the graphics driver, go to [www.dell.com/support](http://www.dell.com/support) and see the Download section for Video Drivers for latest driver updates.
- NOTE:** When in the Portrait View Mode, you may experience performance degradation in graphic-intensive applications (3D Gaming and so on).

## Configuring the rotate feature from the Display Settings of your computer

After you have rotated your monitor, you need to complete the procedure below to adjust configure the rotate feature of the display settings on your computer.

- NOTE:** If you are using the monitor with a non-Dell computer, see the manufacturer's website for information on configuring the rotate feature of the Display Settings.

### To adjust the Rotation Display Settings:

- 1 Right-click on the **Desktop** and click **Properties**.
- 2 Select the Settings tab and click **Advanced**.
- 3 If you have an AMD graphics card, select the Rotation tab and set the preferred rotation.
- 4 If you have an nVidia graphics card, click the nVidia tab, in the left-hand column select NVRotate, and then select the preferred rotation.
- 5 If you have an Intel® graphics card, select the Intel graphics tab, click Graphic Properties, select the Rotation tab, and then set the preferred rotation.

- NOTE:** If you do not see the rotation option or it is not working correctly, go to [www.dell.com/support](http://www.dell.com/support) and download the latest driver for your graphics card.



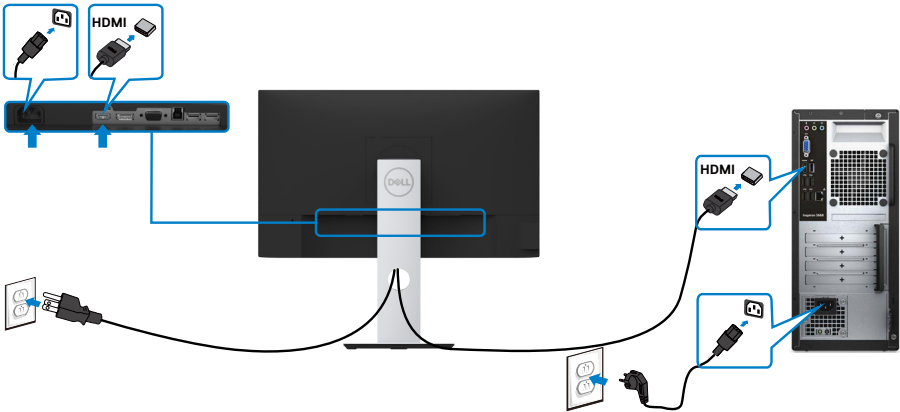
# Connecting your monitor

**⚠ WARNING:** Before you begin any of the procedures in this section, follow the [Safety Instructions](#).

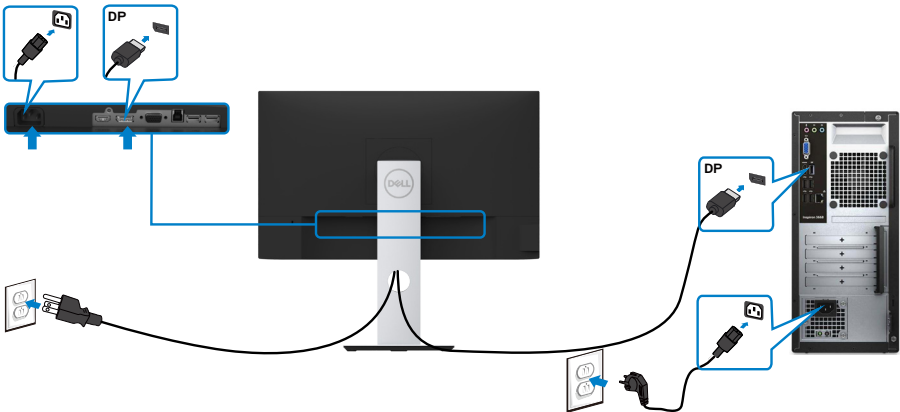
To connect your monitor to the computer:

- 1 Turn off your computer.
- 2 Connect the VGA/HDMI/DP-DP/USB cable from your monitor to the computer.
- 3 Switch on your monitor.
- 4 Select the correct input source at monitor OSD Menu and turn on your computer.

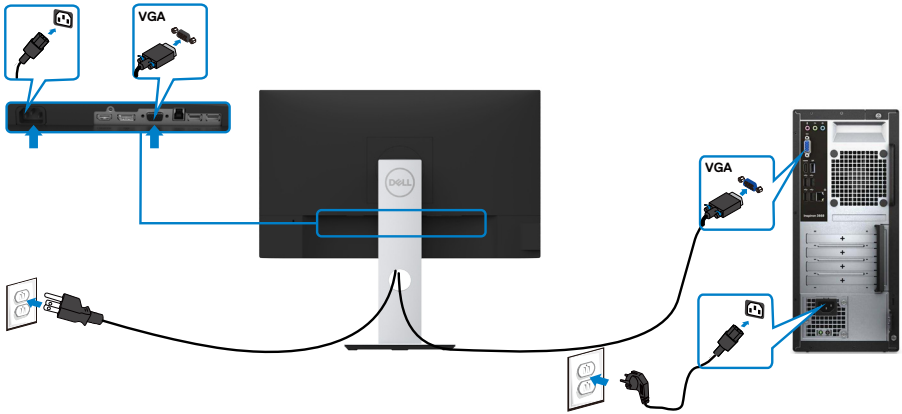
## Connecting the HDMI cable



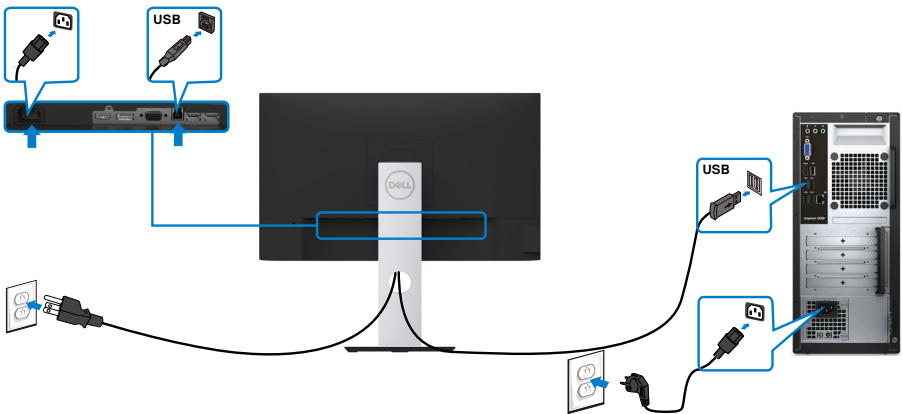
## Connecting the DP cable (Optional)



## Connecting the VGA cable (Optional)



## Connecting the USB cable



## Organizing your cables



After attaching all necessary cables to your monitor and computer, (see [Connecting Your Monitor](#) for cable attachment) organize all cables as shown above.

## Removing the monitor stand



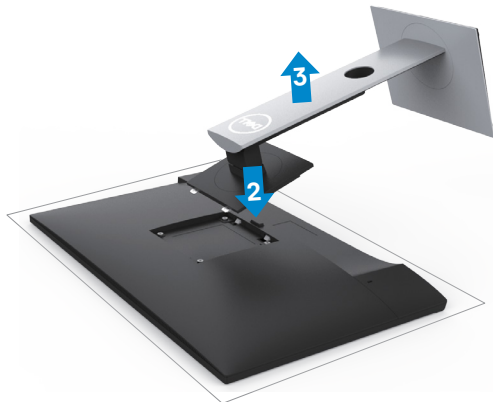
**CAUTION:** To prevent scratches on the LCD screen while removing the stand, make sure that the monitor is placed on a soft, clean surface.



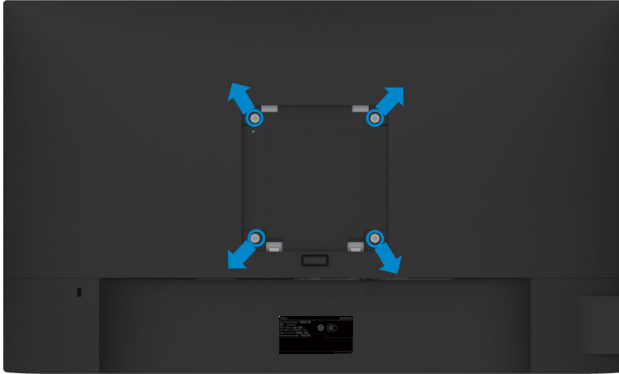
**NOTE:** The procedure below is applicable for the default stand. If you purchased any other stand, see the documentation shipped with the stand to set it up.

To remove the stand:

- 1 Place the monitor on a soft cloth or cushion.
- 2 Press and hold the stand-release button.
- 3 Lift the stand up and away from the monitor.




## Wall mounting (Optional)



 **NOTE:** Use M4 x 10 mm screws to connect the monitor to the wall-mounting kit.

Refer to the instructions that come with the VESA-compatible wall mounting kit.

- 1 Place the monitor on a soft cloth or cushion on a stable, flat table.
- 2 Remove the stand.
- 3 Use a Phillips crosshead screwdriver to remove the four screws securing the plastic cover.
- 4 Attach the mounting bracket from the wall mounting kit to the monitor.
- 5 Mount the monitor on the wall by following the instructions that comes with the wall mounting kit.

 **NOTE:** For use only with UL or CSA or GS-listed wall mount bracket with minimum weight/load bearing capacity of 3.11 kg (S2319HS)/4.35 kg (S2719HS).






# Operating the monitor

---

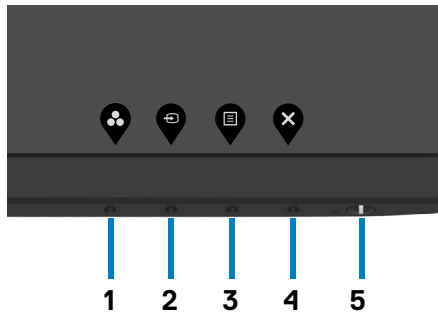
## Turning on the monitor

Press the  button to turn on the monitor.








## Using the front panel controls

Use the control buttons on the front of the monitor to adjust the characteristics of the image being displayed. As you use these buttons to adjust the controls, an OSD shows the numeric values of the characteristics as they change.



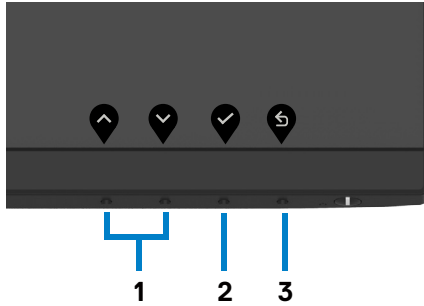
The following table describes the front panel buttons:





Front-Panel Button	Description
1  <b>Shortcut key: Preset Modes</b>	Use this button to choose from a list of preset color modes.
2  <b>Shortcut key: Input source</b>	Use this button to choose from a list of Input Source.
3  <b>Menu</b>	Use this menu button to launch the on-screen display (OSD) and select the OSD menu. See <a href="#">Accessing the Menu System</a> .
4  <b>Exit</b>	Use this button to go back to the main menu or exit the OSD main menu.
5  <b>Power on/off button (with power light indicator)</b>	Use the <b>Power</b> button to turn the monitor On and Off. The white LED indicates the monitor is On and fully functional. A glowing white LED indicates DPMS Power Save Mode.



# Front-panel button

Use the buttons on the front of the monitor to adjust the image settings.





Front Panel Button	Description
1   Up Down	Use the <b>Up</b> (increase) and <b>Down</b> (decrease) keys to adjust items in the OSD menu.
2  OK	Use the <b>OK</b> button to confirm your selection.
3  Back	Use the <b>Back</b> button to go back to the previous menu.



# Using the On-Screen Display (OSD) menu

## Accessing the Menu System

 **NOTE:** Changes you make using the OSD menu are automatically saved each time you move to another menu item, exit the OSD menu, or wait for the OSD menu to disappear.






- 1 Press the  button to launch the OSD menu and display the main menu.

### S2319HS










### S2719HS



- 2 Press the  and  buttons to move between options. As you move from one icon to another, the option name is highlighted.
- 3 Press the  or  or  button once to activate the highlighted option.



- 4 Press the  and  buttons to select the desired parameter.
- 5 Press  to enter the slide bar and then use the  or  button, according to the indicators on the menu, to make your changes.
- 6 Select the  to return to previous menu or  to accept and return to previous menu.

Icon	Menu and Submenus	Description
------	-------------------	-------------



**Brightness/  
Contrast**

Use this menu to activate **Brightness/Contrast** adjustment.  
**S2319HS**





**S2719HS**



**Brightness**



**Brightness** adjusts the luminance of the backlight (minimum 0; maximum 100).

Press the  button to increase brightness.

Press the  button to decrease brightness.

**NOTE:** Manual adjustment of **Brightness** is disabled when **Dynamic Contrast** is switched on.



Icon	Menu and Submenus	Description
	<b>Contrast</b>	<p>Adjust the <b>Brightness</b> first, and then adjust <b>Contrast</b> only if further adjustment is necessary.</p> <p>Press the  button to increase contrast and press the  button to decrease contrast (between 0 and 100).</p> <p>Contrast adjusts the difference between darkness and lightness on the monitor.</p>

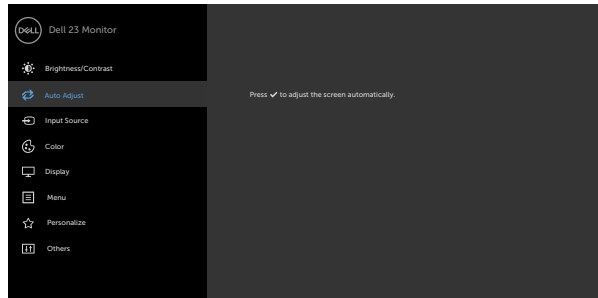


## Auto Adjust

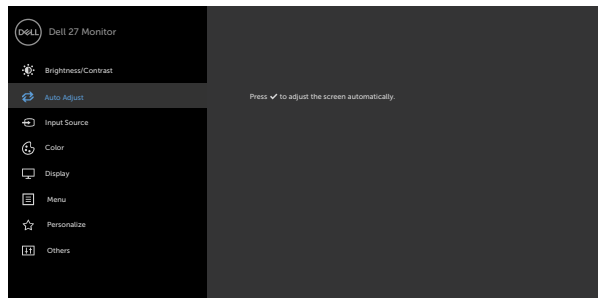
Even though your computer recognizes your monitor on startup, the Auto Adjustment function optimizes the display settings for use with your particular setup.

Auto Adjustment allows the monitor to self-adjust to the incoming video signal. After using Auto Adjustment, you can further tune your monitor by using the Pixel Clock (Coarse) and Phase (Fine) controls under Display menu.

### S2319HS

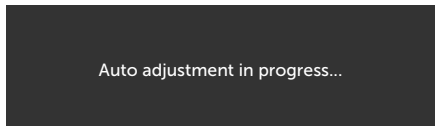


### S2719HS



Icon	Menu and Submenus	Description
------	-------------------	-------------

The following dialog appears on a black screen as the monitor automatically adjusts to the current input:



**NOTE:** In most cases, Auto Adjust produces the best image for your configuration.

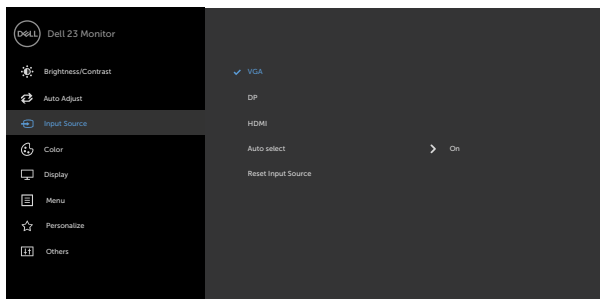
**NOTE:** Auto Adjust feature option is only available when your monitor is connected using the VGA cable.



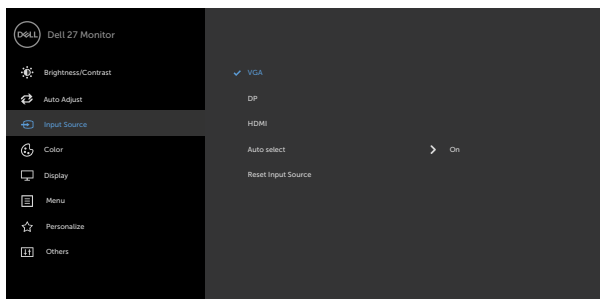
## Input Source





Use the **Input Source** menu to select between different video inputs that are be connected to your monitor.

### S2319HS



### S2719HS

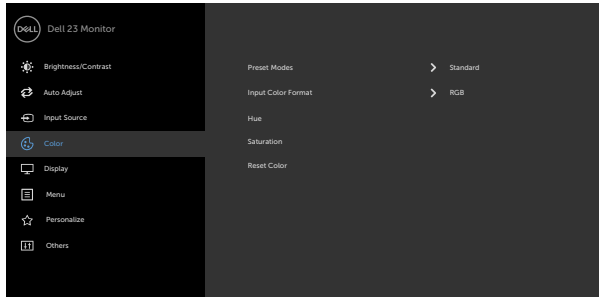


Icon	Menu and Submenus	Description
	VGA	Use  to select the VGA input source.
	DP	Use  to select the DP input source.
	HDMI	Use  to select the HDMI input source.
	Auto Select	Use  to select <b>Auto Select</b> to scan for available input signals.
	Reset Input Source	Resets your monitor's Input Source settings to the factory defaults.

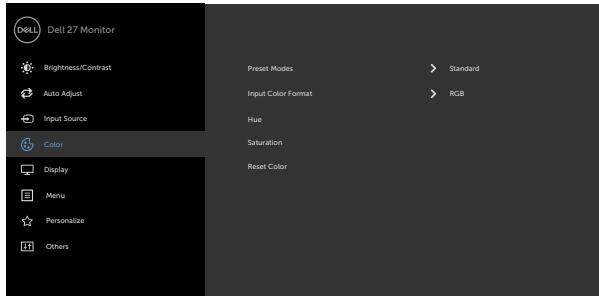


### Color

Use the **Color** menu to adjust the color setting mode.  
**S2319HS**



### S2719HS

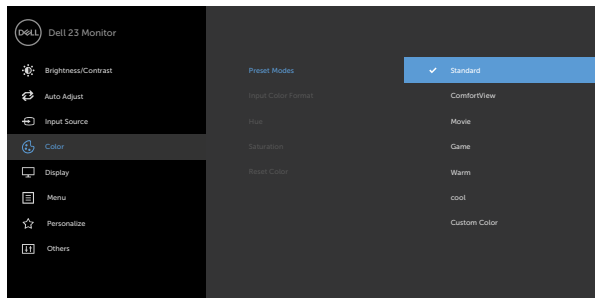




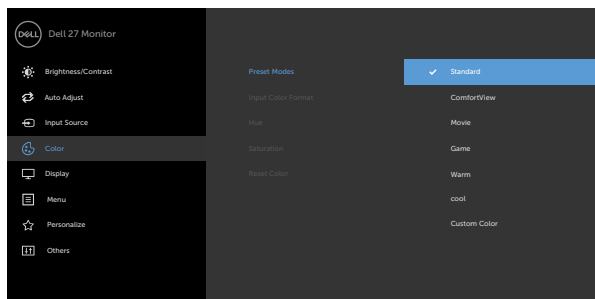
Icon	Menu and Submenus	Description
------	-------------------	-------------

**Preset Modes** When you select Preset Modes, you can choose **Standard**, **ComfortView**, **Movie**, **Game**, **Warm**, **Cool**, or **Custom Color** from the list.

### S2319HS





### S2719HS



- **Standard:** Default color settings. This is the default preset mode.
  - **ComfortView:** Decreases the level of blue light emitted from the screen to make viewing more comfortable for your eyes.
- NOTE:** To reduce the risk of eye strain and neck/arm/back/shoulders pain from using the monitor for long periods of time, we suggest you to :



Icon	Menu and Submenus	Description
		<ul style="list-style-type: none"> <li>• Set the screen about 20 to 28 inches (50 to 70 cm) from your eyes.</li> <li>• Blink frequently to moisten or rewet your eyes when working with the monitor.</li> <li>• Take regular and frequent breaks for 20 minutes every two hours.</li> <li>• Look away from your monitor and gaze at a distant object at 20 feet away for at least 20 seconds during the breaks.</li> <li>• Perform stretches to relieve tension in the neck/arm/back/shoulders during the breaks.</li> <li>• <b>Movie:</b> Ideal for movies.</li> <li>• <b>Game:</b> Ideal for most gaming applications.</li> <li>• <b>Warm:</b> Increases the color temperature. The screen appears warmer with a red/yellow tint.</li> <li>• <b>Cool:</b> Decreases the color temperature. The screen appears cooler with a blue tint.</li> <li>• <b>Custom Color:</b> Allows you to manually adjust the color settings. Press the  and  buttons to adjust the Red, Green, and Blue values and create your own preset color mode.</li> </ul>



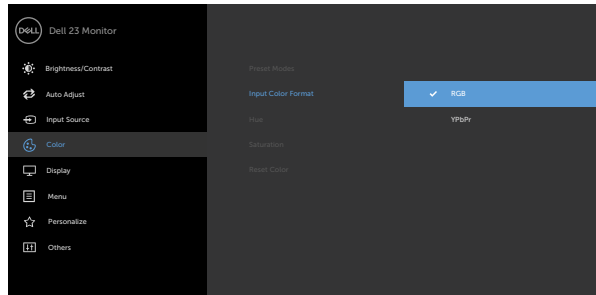
Icon	Menu and Submenus	Description
------	-------------------	-------------

**Input Color Format**

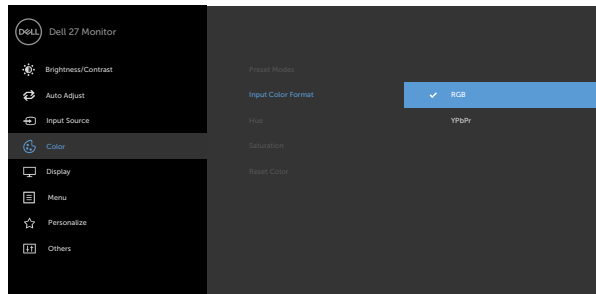
Allows you to set the video input mode to:



- **RGB:** Select this option if your monitor is connected to a computer (or DVD player) using the HDMI, DP cable.
- **YPbPr:** Select this option if your DVD player supports only YPbPr output.



**S2319HS**



**S2719HS**




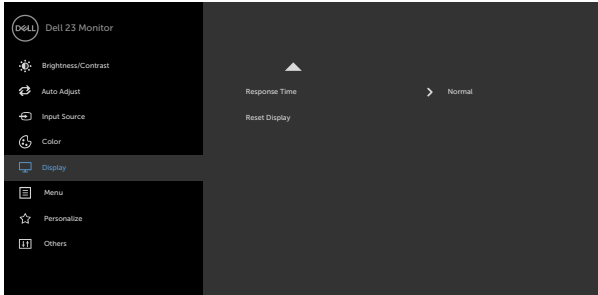
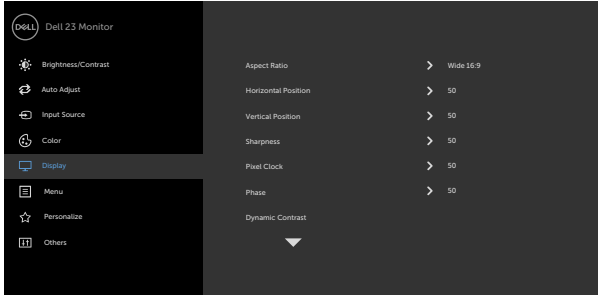
**Hue** Use  or  to adjust the hue from 0 to 100.  
**NOTE:** Hue adjustment is available only for Movie and Game mode.

**Saturation** Use  or  to adjust the saturation from 0 to 100.  
**NOTE:** Saturation adjustment is available only for Movie and Game mode.

**Reset Color** Resets your monitor's color settings to the factory defaults.

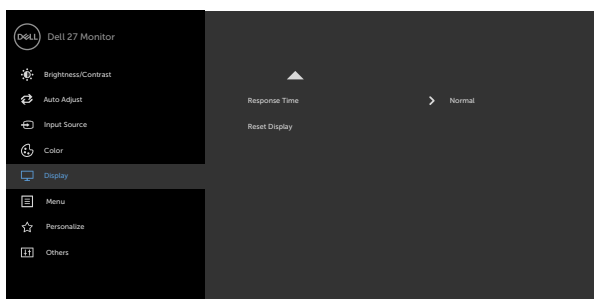
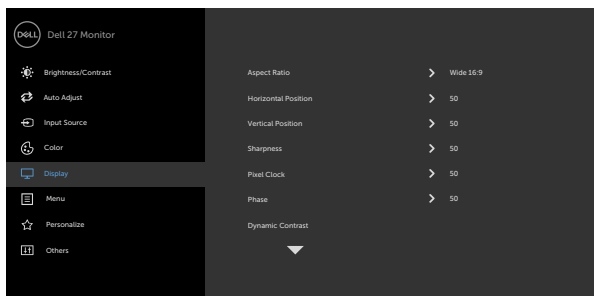


Icon	Menu and Submenus	Description
	Display	Use the <b>Display</b> menu to adjust image. <b>S2319HS</b>







Icon	Menu and Submenus	Description
------	-------------------	-------------

## S2719HS






**Aspect Ratio** Adjust the image ratio to **Wide 16:9, 4:3, 5:4**.




**Horizontal Position** Use  or  to adjust the image left or right. Minimum is '0' (-). Maximum is '100' (+).

**Vertical Position** Use  or  to adjust the image up or down. Minimum is '0' (-). Maximum is '100' (+).

**NOTE:** Horizontal Position and Vertical Position adjustments are only available for "VGA" input.

**Sharpness** Makes the image look sharper or softer. Use  or  to adjust the sharpness from '0' to '100'. Press  for sharper image.



Icon	Menu and Submenus	Description
	<b>Pixel Clock</b>	The Phase and Pixel Clock adjustments allow you to adjust your monitor to your preference. Use the  or  buttons to adjust for best image quality.
	<b>Phase</b>	If satisfactory results are not obtained using the Phase adjustment, use the Pixel Clock (coarse) adjustment and then use Phase (fine) again. <b>NOTE:</b> Pixel Clock and Phase adjustments are only available when your monitor is connected using the VGA cable.
	<b>Dynamic Contrast</b>	Allows you to increase the level of contrast to provide sharper and more detailed image quality. Push the  button to select the <b>Dynamic Contrast</b> “On” or “Off”. <b>NOTE:</b> For <b>Game</b> and <b>Movie</b> preset mode only. <b>NOTE:</b> <b>Dynamic Contrast</b> provides higher contrast if you select <b>Game</b> or <b>Movie</b> preset mode.
	<b>Response Time</b>	Allows you to set the <b>Response Time</b> to <b>Normal</b> or <b>Fast</b> .
	<b>Reset Display</b>	Restores the display settings to factory defaults.



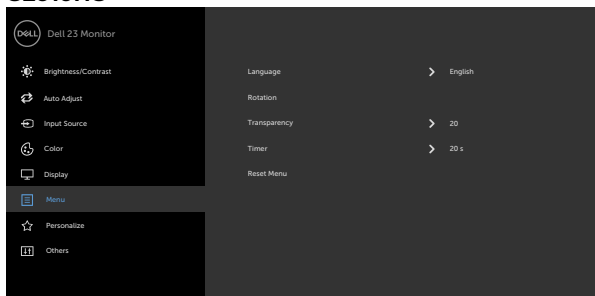
Icon	Menu and Submenus	Description
------	-------------------	-------------



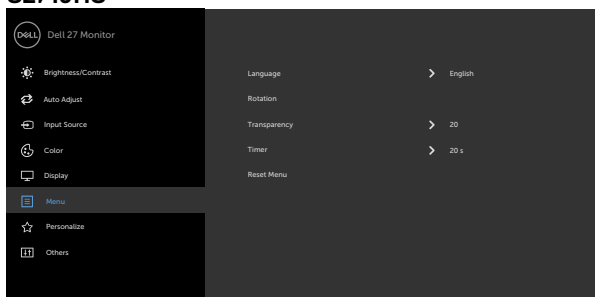
## Menu

Select this option to adjust the settings of the OSD, such as, the languages of the OSD, the amount of time the menu remains on screen, and so on.

### S2319HS





### S2719HS






<b>Language</b>	Set the OSD display to one of eight languages. (English, Spanish, French, German, Brazilian Portuguese, Russian, Simplified Chinese, or Japanese).
-----------------	---

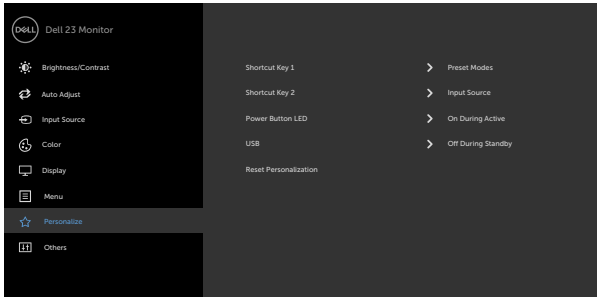
<b>Rotation</b>	Rotates the OSD by 90 degrees counter-clockwise. You can adjust the menu according to your display rotation.
-----------------	---

<b>Transparency</b>	Select this option to change the menu transparency by using  and  (min. 0 / max. 100).
---------------------	---

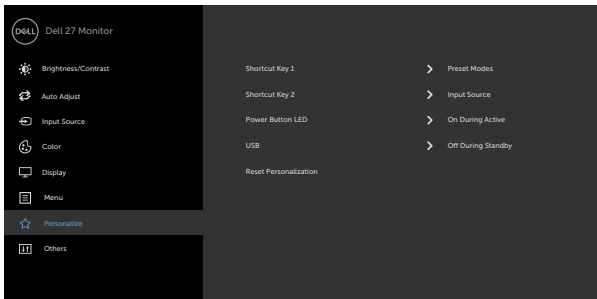


Icon	Menu and Submenus	Description
	Timer	<p><b>OSD Hold Time:</b> Sets the length of time the OSD remains active after you press a button.</p> <p>Use the  and  buttons to adjust the slider in 1-second increments, from 5 to 60 seconds.</p>
	Reset Menu	Restore the menu settings to factory defaults.
	Personalize	Select from <b>Preset Modes, Brightness/Contrast, Auto Adjust, Input Source, Aspect Ratio</b> and <b>Rotation</b> set as shortcut key.

**S2319HS**



**S2719HS**



**Power Button LED** Allows you to set the state of the power light to save energy.





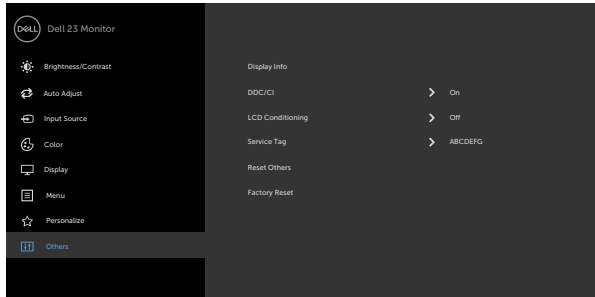
Icon	Menu and Submenus	Description
	<b>USB</b>	Allows you to enable or disable USB function during monitor standby mode.  NOTE: USB on / off under standby mode is only available when the USB upstream cable is unplugged. This option will be greyed out when the USB upstream cable is plugged in.
	<b>Reset Personalization</b>	Restores shortcut keys to factory defaults.



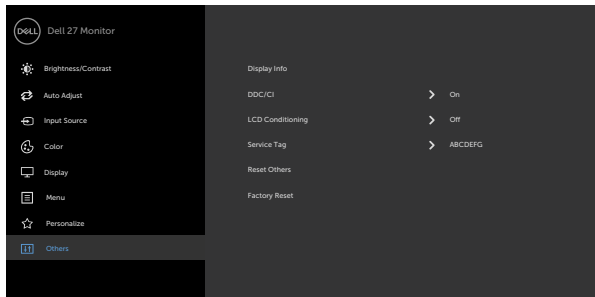
**Other**

Select this option to adjust the OSD settings, such as the DDC/CI, LCD conditioning, and so on.

**S2319HS**



**S2719HS**



**Display Info**

Displays the monitor's current settings.



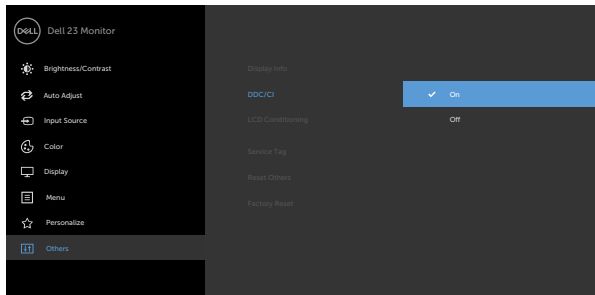
Icon	Menu and Submenus	Description
------	-------------------	-------------

**DDC/CI**

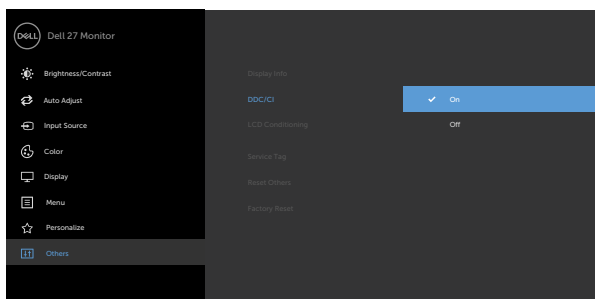
**DDC/CI (Display Data Channel/Command Interface)** allows you to adjust the monitor settings using software on your computer. Select **Off** to turn off this feature.


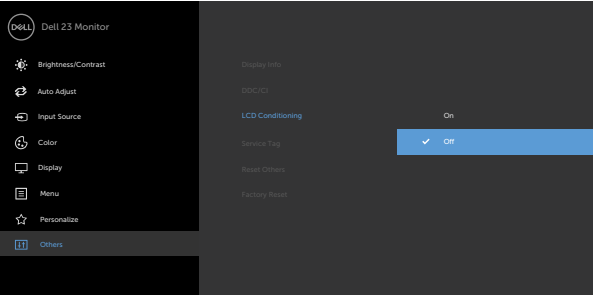

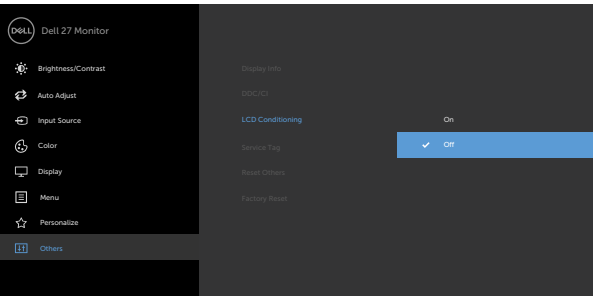

Enable this feature for best user experience and optimum performance of your monitor.

**S2319HS**



**S2719HS**



Icon	Menu and Submenus	Description
	<b>LCD Conditioning</b>	Helps reduce minor cases of image retention. Depending on the degree of image retention, the program may take some time to run. Select <b>On</b> to start the process.
		<b>S2319HS</b>
		
		
		<b>S2719HS</b>
		
		
	<b>Service Tag</b>	Displays the Service Tag. The Service Tag is a unique alphanumeric identifier that allows Dell to identify the product specifications and access warranty information.
		<b>NOTE:</b> The Service Tag is also printed on a label located at the back of the cover.
	<b>Reset Others</b>	Restores other settings, such as <b>DDC/CI</b> , to factory defaults.
	<b>Factory Reset</b>	Restores all OSD settings to the factory defaults.



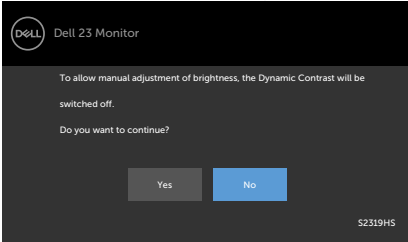
**NOTE:** This monitor has a built-in feature which automatically calibrates the brightness to compensate for LED aging.



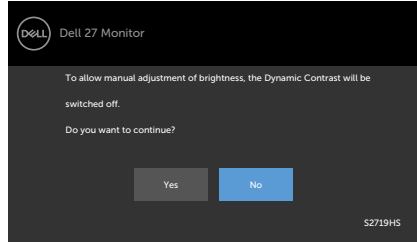
# OSD warning messages

When the **Dynamic Contrast** feature is enabled (in these preset modes: **Game** or **Movie**), manual brightness adjustment is disabled.

## S2319HS

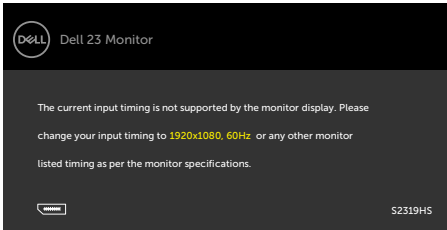


## S2719HS

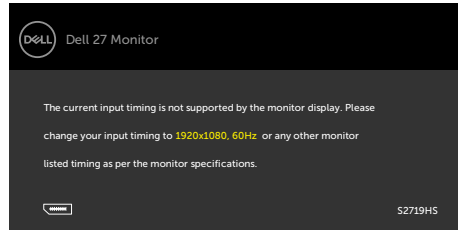


When the monitor does not support a particular resolution mode, you can see the following message:

## S2319HS



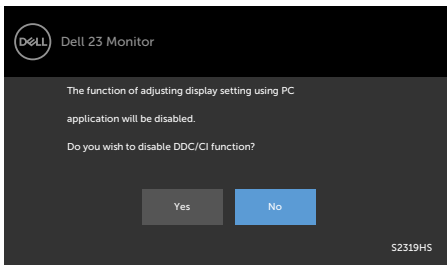
## S2719HS



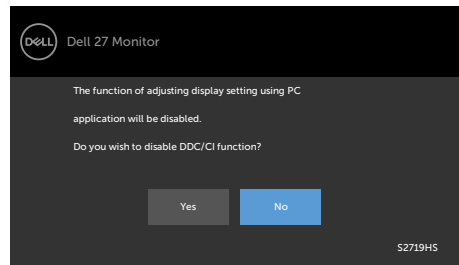
This means that the monitor cannot synchronize with the signal that it is receiving from the computer. See [Monitor Specifications](#) for the Horizontal and Vertical frequency ranges addressable by this monitor. Recommended mode is 1920 x 1080.

You can see the following message before the DDC/CI function is disabled:

## S2319HS

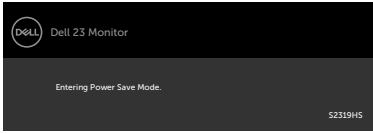


## S2719HS

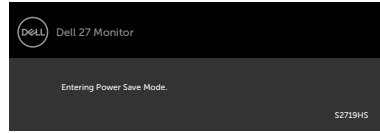


When the monitor enters the **Power Save** mode, the following message appears:

### S2319HS



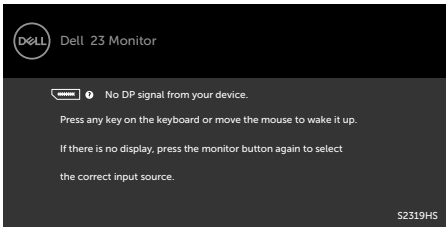
### S2719HS



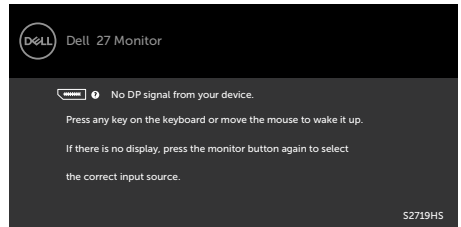
Activate the computer and wake up the monitor to gain access to the [OSD](#).

If you press any button other than the power button, the following messages will appear depending on the selected input:

### S2319HS

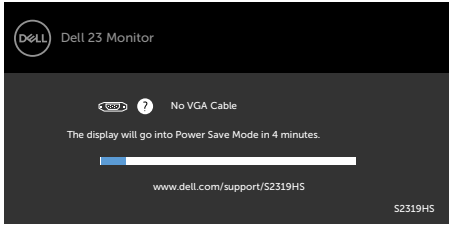


### S2719HS

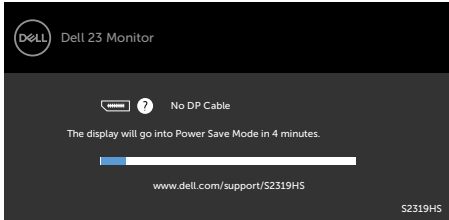


If either VGA, DP, HDMI input is selected and the corresponding cable is not connected, a floating dialog box as shown below appears.

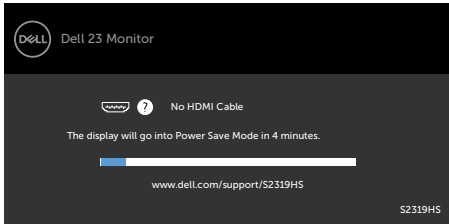
### S2319HS



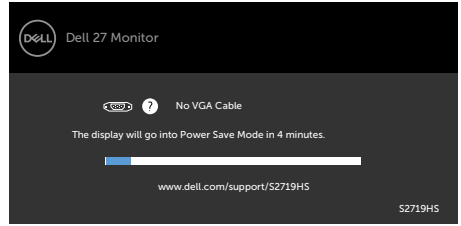
or



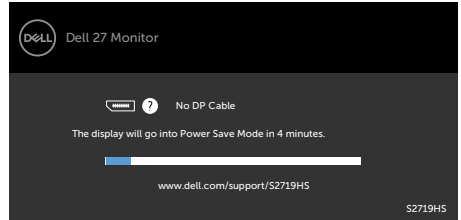
or



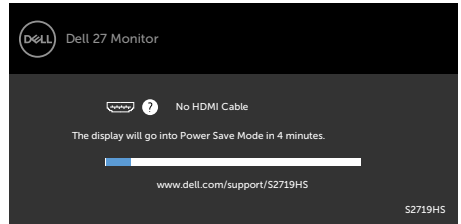
### S2719HS



or



or



See [Troubleshooting](#) for more information.



# Troubleshooting

**⚠ WARNING:** Before you begin any of the procedures in this section, follow the [Safety Instructions](#).

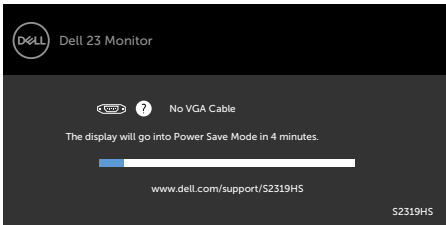
## Self-test

Your monitor provides a self-test feature that allows you to check whether your monitor is functioning properly. If your monitor and computer are properly connected but the monitor screen remains dark, run the monitor self-test by performing the following steps:

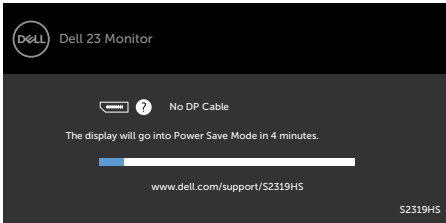
- 1 Turn off both your computer and the monitor.
- 2 Unplug the video cable from the back of the computer. To ensure proper Self-Test operation, remove all video cables from the back of computer.
- 3 Turn on the monitor.

The floating dialog box should appear on-screen (against a black background), if the monitor cannot sense a video signal and is working correctly. While in self-test mode, the power LED remains white. Also, depending upon the selected input, one of the dialogs shown below will continuously scroll through the screen.

### S2319HS

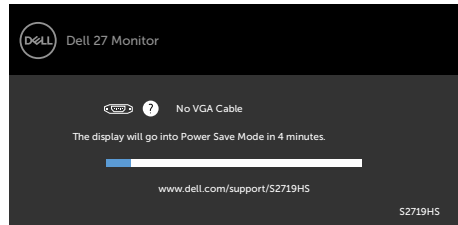


or

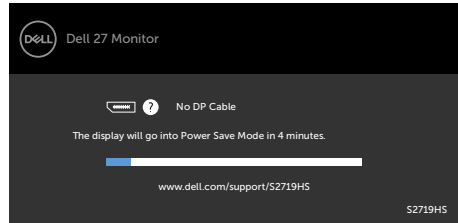


or

### S2719HS



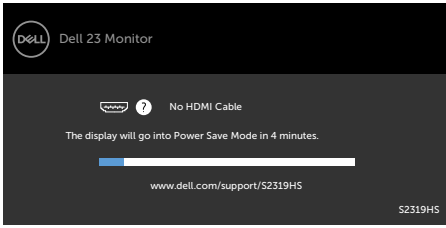
or



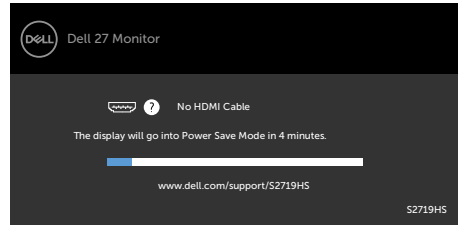
or



## S2319HS



## S2719HS



- 4 This box also appears during normal system operation, if the video cable becomes disconnected or damaged.
- 5 Turn off your monitor and reconnect the video cable; then turn on both your computer and the monitor.


If your monitor screen remains blank after you use the previous procedure, check your video controller and computer, because your monitor is functioning properly.

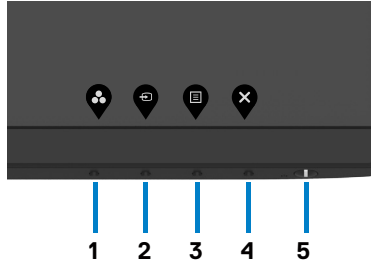




# Built-in diagnostics

Your monitor has a built-in diagnostic tool that helps you determine if the screen abnormality you are experiencing is an inherent problem with your monitor, or with your computer and video card.

 **NOTE:** You can run the built-in diagnostics only when the video cable is unplugged and the monitor is in self-test mode.



To run the built-in diagnostics:

- 1 Make sure that the screen is clean (no dust particles on the surface of the screen).
- 2 Unplug the video cable(s) from the back of the computer or monitor. The monitor then goes into the self-test mode.
- 3 Press and hold **Button 1** for 5 seconds. A gray screen appears.
- 4 Carefully inspect the screen for abnormalities.
- 5 Press **Button 1** on the front panel again. The color of the screen changes to red.
- 6 Inspect the display for any abnormalities.
- 7 Repeat steps 5 and 6 to inspect the display in green, blue, black, white, and text screens.

The test is complete when the text screen appears. To exit, press **Button 1** again. If you do not detect any screen abnormalities upon using the built-in diagnostic tool, the monitor is functioning properly. Check the video card and computer.



# Common problems

The following table contains general information about common monitor problems you might encounter and the possible solutions:

Common Symptoms	What You Experience	Possible Solutions
No Video/Power LED off	No picture	<ul style="list-style-type: none"> <li>• Ensure that the video cable connecting the monitor and the computer is properly connected and secure.</li> <li>• Verify that the power outlet is functioning properly using any other electrical equipment.</li> <li>• Ensure that the power button is depressed fully.</li> <li>• Ensure that the correct input source is selected in the <a href="#">Input Source</a> menu.</li> </ul>
No Video/Power LED on	No picture or no brightness	<ul style="list-style-type: none"> <li>• Increase brightness &amp; contrast controls via OSD.</li> <li>• Perform monitor self-test feature check.</li> <li>• Check for bent or broken pins in the video cable connector.</li> <li>• Run the built-in diagnostics.</li> <li>• Ensure that the correct input source is selected in the <a href="#">Input Source</a> menu.</li> </ul>
Poor Focus	Picture is fuzzy, blurry, or ghosting	<ul style="list-style-type: none"> <li>• Perform Auto Adjust via OSD.</li> <li>• Adjust the Phase and Pixel Clock controls via OSD.</li> <li>• Eliminate video extension cables.</li> <li>• Reset the monitor to factory settings.</li> <li>• Change the video resolution to the correct aspect ratio.</li> </ul>
Shaky/Jittery Video	Wavy picture or fine movement	<ul style="list-style-type: none"> <li>• Perform Auto Adjust via OSD.</li> <li>• Adjust the Phase and Pixel Clock controls via OSD.</li> <li>• Reset the monitor to factory settings.</li> <li>• Check environmental factors.</li> <li>• Relocate the monitor and test in another room.</li> </ul>
Missing Pixels	LCD screen has spots	<ul style="list-style-type: none"> <li>• Cycle power on-off.</li> <li>• Pixel that is permanently off is a natural defect that can occur in LCD technology.</li> <li>• For more information on Dell Monitor Quality and Pixel Policy, see Dell Support site at: <a href="http://www.dell.com/support/monitors">www.dell.com/support/monitors</a>.</li> </ul>
Stuck-on Pixels	LCD screen has bright spots	<ul style="list-style-type: none"> <li>• Cycle power on-off.</li> <li>• Pixel that is permanently off is a natural defect that can occur in LCD technology.</li> <li>• For more information on Dell Monitor Quality and Pixel Policy, see Dell Support site at: <a href="http://www.dell.com/support/monitors">www.dell.com/support/monitors</a>.</li> </ul>
Brightness Problems	Picture too dim or too bright	<ul style="list-style-type: none"> <li>• Reset the monitor to factory settings.</li> <li>• <b>Auto Adjust</b> through OSD.</li> <li>• Adjust brightness &amp; contrast controls via OSD.</li> </ul>



Common Symptoms	What You Experience	Possible Solutions
Geometric Distortion	Screen not centered correctly	<ul style="list-style-type: none"> <li>Reset the monitor to factory settings.</li> <li>• <b>Auto Adjust</b> through OSD.</li> <li>• Adjust horizontal &amp; vertical controls via OSD.</li> </ul>
Horizontal/ Vertical Lines	Screen has one or more lines	<ul style="list-style-type: none"> <li>Reset the monitor to factory settings.</li> <li>• Perform <b>Auto Adjust</b> via OSD.</li> <li>• Adjust Phase and Pixel Clock controls via OSD.</li> <li>• Perform monitor self-test feature check and determine if these lines are also in self-test mode.</li> <li>• Check for bent or broken pins in the video cable connector.</li> <li>• Run the built-in diagnostics.</li> </ul>
Synchronization Problems	Screen is scrambled or appears torn	<ul style="list-style-type: none"> <li>Reset the monitor to factory settings.</li> <li>• Perform <b>Auto Adjust</b> via OSD.</li> <li>• Adjust Phase and Pixel Clock controls via OSD.</li> <li>• Perform monitor self-test feature check to determine if the scrambled screen appears in self-test mode.</li> <li>• Check for bent or broken pins in the video cable connector.</li> <li>• Restart the computer in safe mode.</li> </ul>
Safety Related Issues	Visible signs of smoke or sparks	<ul style="list-style-type: none"> <li>Do not perform any troubleshooting steps.</li> <li>• Contact Dell immediately.</li> </ul>
Intermittent Problems	Monitor malfunctions on & off	<ul style="list-style-type: none"> <li>Ensure that the video cable connecting the monitor to the computer is connected properly and is secure.</li> <li>• Reset the monitor to factory settings.</li> <li>• Perform monitor self-test feature check to determine if the intermittent problem occurs in self-test mode.</li> </ul>
Missing Color	Picture missing color	<ul style="list-style-type: none"> <li>Perform monitor self-test.</li> <li>• Ensure that the video cable connecting the monitor to the computer is connected properly and is secure.</li> <li>• Check for bent or broken pins in the video cable connector.</li> </ul>
Wrong Color	Picture color not good	<ul style="list-style-type: none"> <li>• Change the settings of the <b>Preset Modes</b> in the <b>Color</b> menu OSD depending on the application.</li> <li>• Adjust R/G/B value under <b>Custom. Color</b> in <b>Color</b> menu OSD.</li> <li>• Change the <b>Input Color Format</b> to PC RGB or YPbPr in the <b>Color</b> menu OSD.</li> <li>• Run the built-in diagnostics.</li> </ul>



Common Symptoms	What You Experience	Possible Solutions
Image retention from a static image left on the monitor for a long period of time	Faint shadow from the static image displayed appears on the screen	<ul style="list-style-type: none"> <li>• Use the Power Management feature to turn off the monitor at all times when not in use (for more information, see <a href="#">Power Management Modes</a>).</li> <li>• Alternatively, use a dynamically changing screensaver.</li> </ul>

## Product specific problems

Specific Symptoms	What You Experience	Possible Solutions
Screen image is too small	Image is centered on screen, but does not fill entire viewing area	<ul style="list-style-type: none"> <li>• Check the <b>Aspect Ratio</b> setting in the <b>Display</b> menu OSD.</li> <li>• Reset the monitor to factory settings.</li> </ul>
No Input Signal when user controls are pressed	No picture, the LED light is white	<ul style="list-style-type: none"> <li>• Check the signal source. Ensure the computer is not in the power saving mode by moving the mouse or pressing any key on the keyboard.</li> <li>• Check whether the signal cable is plugged in properly. Re-plug the signal cable if necessary.</li> <li>• Reset the computer or video player.</li> </ul>
The picture does not fill the entire screen	The picture cannot fill the height or width of the screen	<ul style="list-style-type: none"> <li>• Due to different video formats (aspect ratio) of DVDs, the monitor may display in full screen.</li> <li>• Run the built-in diagnostics.</li> </ul>

## Universal Serial Bus (USB) specific problems

Specific Symptoms	What You Experience	Possible Solutions
USB interface is not working	USB peripherals are not working	<ul style="list-style-type: none"> <li>• Check that your monitor is turned on.</li> <li>• Reconnect the upstream cable to your computer.</li> <li>• Reconnect the USB peripherals (downstream connector).</li> <li>• Switch off and then turn on the monitor again.</li> <li>• Reboot the computer.</li> <li>• Some USB devices like external portable HDD require higher electric current; connect the device directly to the computer system.</li> </ul>



Specific Symptoms	What You Experience	Possible Solutions
SuperSpeed USB 3.0 interface is slow.	SuperSpeed USB 3.0 peripherals working slowly or do not work at all	<ul style="list-style-type: none"> <li>• Check that your computer supports USB 3.0.</li> <li>• Some computers have USB 3.0, USB 2.0, and USB 1.1 ports. Ensure that the correct USB port is used.</li> <li>• Reconnect the upstream cable to your computer.</li> <li>• Reconnect the USB peripherals (downstream connector).</li> <li>• Reboot the computer.</li> </ul>
Wireless USB peripherals stop working when a USB 3.0 device is plugged in	Wireless USB peripherals respond slowly or only work when the distance between the peripheral and its receiver is short.	<ul style="list-style-type: none"> <li>• Increase the distance between the USB 3.0 peripherals and the wireless USB receiver.</li> <li>• Position your wireless USB receiver as close as possible to the wireless USB peripherals.</li> <li>• Use a USB-extender cable to position the wireless USB receiver as far away as possible from the USB 3.0 port.</li> </ul>



# Appendix

---

## Safety instructions

For displays with glossy bezels the user should consider the placement of the display as the bezel may cause disturbing reflections from surrounding light and bright surfaces.


 **WARNING: Use of controls, adjustments, or procedures other than those specified in this documentation may result in exposure to shock, electrical hazards, and/or mechanical hazards.**

For information on safety instructions, see the Safety, Environmental, and Regulatory Information (SERI).

## FCC notices (U.S. only) and other regulatory information

For FCC notices and other regulatory information, see the regulatory compliance website located at [www.dell.com/regulatory\\_compliance](http://www.dell.com/regulatory_compliance).

## Contacting Dell

 **NOTE:** If you do not have an active Internet connection, you can find contact information on your purchase invoice, packing slip, bill, or Dell product catalog.

Dell provides several online and telephone-based support and service options. Availability varies by country and product, and some services may not be available in your area.

**To get online Monitor support content:**

See [www.dell.com/support/monitors](http://www.dell.com/support/monitors).

**To contact Dell for sales, technical support, or customer service issues:**

- 1 Go to [www.dell.com/support](http://www.dell.com/support).
- 2 Verify your country or region in the Choose A Country/Region drop-down menu at the top-left corner of the page.
- 3 Click **Contact Us** next to the country dropdown.
- 4 Select the appropriate service or support link based on your need.
- 5 Choose the method of contacting Dell that is convenient for you.



# Setting up your monitor

## Setting Display Resolution to 1920 x 1080

For best performance, set the display resolution to **1920 x 1080** pixels by performing the following steps:

### In Windows Vista, Windows 7, Windows 8 or Windows 8.1:

- 1 For Windows 8 or Windows 8.1 only, select the Desktop tile to switch to classic desktop. For Windows Vista and Windows 7, skip this step.
- 2 Right-click on the desktop and click **Screen Resolution**.
- 3 Click the Dropdown list of the Screen Resolution and select **1920 x 1080**.
- 4 Click **OK**.


### In Windows 10:

- 1 Right-click on the desktop and click **Display Settings**.
- 2 Click **Advanced display settings**.
- 3 Click the dropdown list of **Resolution** and select **1920 x 1080**.
- 4 Click **Apply**.

If you do not see the recommended resolution as an option, you may need to update your graphics driver. Please choose the scenario below that best describes the computer system you are using, and follow the given steps.

## Dell computer

- 1 Go to [www.dell.com/support](http://www.dell.com/support), enter your service tag, and download the latest driver for your graphics card.
- 2 After installing the drivers for your graphics adapter, attempt to set the resolution to **1920 x 1080** again.

 **NOTE:** If you are unable to set the resolution to **1920 x 1080**, please contact Dell to inquire about a graphics adapter that supports these resolutions.



## Non-Dell computer

### In Windows Vista, Windows 7, Windows 8 or Windows 8.1:

- 1 For Windows 8 or Windows 8.1 only, select the Desktop tile to switch to classic desktop. For Windows Vista and Windows 7, skip this step.
- 2 Right-click on the desktop and click **Personalization**.
- 3 Click **Change Display Settings**.
- 4 Click **Advanced Settings**.
- 5 Identify your graphics controller supplier from the description at the top of the window (e.g. NVIDIA, AMD, Intel etc.).
- 6 Refer to the graphic card provider website for updated driver (for example, [www.AMD.com](http://www.AMD.com) or [www.NVIDIA.com](http://www.NVIDIA.com)).
- 7 After installing the drivers for your graphics adapter, attempt to set the resolution to **1920 x 1080** again.

### In Windows 10:

- 1 Right-click on the desktop and click **Display Settings**.
- 2 Click **Advanced display settings**.
- 3 Click **Display adapter properties**.
- 4 Identify your graphics controller supplier from the description at the top of the window (e.g. NVIDIA, AMD, Intel etc.).
- 5 Refer to the graphic card provider website for updated driver (for example, [www.AMD.com](http://www.AMD.com) or [www.NVIDIA.com](http://www.NVIDIA.com)).
- 6 After installing the drivers for your graphics adapter, attempt to set the resolution to **1920 x 1080** again.



**NOTE:** If you are unable to set the recommended resolution, please contact the manufacturer of your computer or consider purchasing a graphics adapter that supports the video resolution.





# Maintenance guidelines

## Cleaning your monitor



**WARNING:** Before cleaning the monitor, unplug the monitor power cable from the electrical outlet.



**CAUTION:** Read and follow the [Safety Instructions](#) before cleaning the monitor.

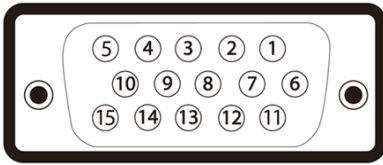
For best practices, follow these instructions in the list below while unpacking, cleaning, or handling your monitor:

- To clean your anti-static screen, lightly dampen a soft, clean cloth with water. If possible, use a special screen-cleaning tissue or solution suitable for the anti-static coating. Do not use benzene, thinner, ammonia, abrasive cleaners, or compressed air.
- Use a lightly-dampened, soft cloth to clean the monitor. Avoid using detergent of any kind as some detergents leave a milky film on the monitor.
- If you notice white powder when you unpack your monitor, wipe it off with a cloth.
- Handle your monitor with care as a darker-colored monitor may get scratched and show white scuff marks more than a lighter-colored monitor.
- To help maintain the best image quality on your monitor, use a dynamically changing screen saver and turn off your monitor when not in use.



# Pin assignments

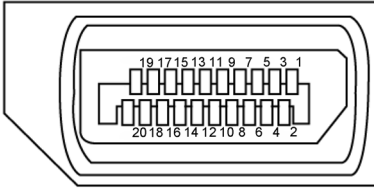
## VGA connector



Pin number	15-pin side of the connected signal cable
1	Video-Red
2	Video-Green
3	Video-Blue
4	GND
5	Self-test
6	GND-R
7	GND-G
8	GND-B
9	Computer 5 V / 3.3 V
10	GND-sync
11	GND
12	DDC data
13	H-sync
14	V-sync
15	DDC clock



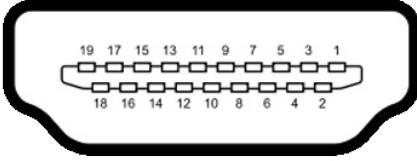
## DP connector



Pin number	20-pin side of the connected signal cable
1	ML3 (n)
2	GND
3	ML3 (p)
4	ML2 (n)
5	GND
6	ML2 (p)
7	ML1 (n)
8	GND
9	ML1 (p)
10	ML0 (n)
11	GND
12	ML0 (p)
13	GND
14	GND
15	AUX (p)
16	GND
17	AUX (n)
18	Hot Plug Detect
19	Re-PWR
20	+3.3 V DP_PWR



## HDMI connector



Pin number	19-pin side of the connected signal cable
1	TMDS DATA 2+
2	TMDS DATA 2 SHIELD
3	TMDS DATA 2-
4	TMDS DATA 1+
5	TMDS DATA 1 SHIELD
6	TMDS DATA 1-
7	TMDS DATA 0+
8	TMDS DATA 0 SHIELD
9	TMDS DATA 0-
10	TMDS CLOCK+
11	TMDS CLOCK SHIELD
12	TMDS CLOCK-
13	CEC
14	Reserved (N.C. on device)
15	DDC CLOCK (SCL)
16	DDC DATA (SDA)
17	DDC/CEC Ground
18	+5 V POWER
19	HOT PLUG DETECT




## Universal Serial Bus (USB)

This section provides information about the USB ports available on your monitor.

Your computer has the following USB ports:

<b>Bottom</b>	<ul style="list-style-type: none"><li>• One USB 3.0 upstream port</li><li>• Two USB 3.0 downstream ports</li></ul>
<b>Left</b>	Two USB 3.0 downstream ports

 **NOTE:** The monitor's USB ports work only when the monitor is on or in the power save mode. If you turn off the monitor and then turn it on, the attached peripherals may take a few seconds to resume normal functionality.

 **NOTE:** This monitor is Super-Speed USB 3.0 and High-Speed USB 2.0 compatible.

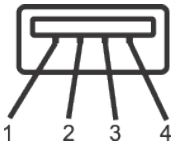
### USB 3.0

Transfer speed	Data rate	Maximum power consumption (each port)
SuperSpeed	5 Gbps	4.5 W
Hi-Speed	480 Mbps	4.5 W
Full speed	12 Mbps	4.5 W

### USB 2.0

Transfer speed	Data rate	Maximum power consumption (each port)
Hi-Speed	480 Gbps	2.5 W
Full speed	12 Mbps	2.5 W
Low speed	1.5 Mbps	2.5 W

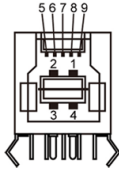
### USB 2.0 downstream port



Pin number	Signal
1	VCC
2	DMD
3	DPD
4	GND

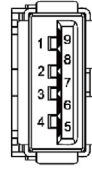


## USB 3.0 upstream port



Pin number	Signal
1	VBUS
2	D-
3	D+
4	GND
5	StdB_SSTX-
6	StdB_SSTX+
7	GND_DRAIN
8	StdB_SSRX-
9	StdB_SSRX+
Shell	Shield

## USB 3.0 downstream port



Pin number	Signal
1	VBUS
2	D-
3	D+
4	GND
5	StdA_SSRX-
6	StdA_SSRX+
7	GND_DRAIN
8	StdA_SSTX-
9	StdA_SSTX+
Shell	Shield

