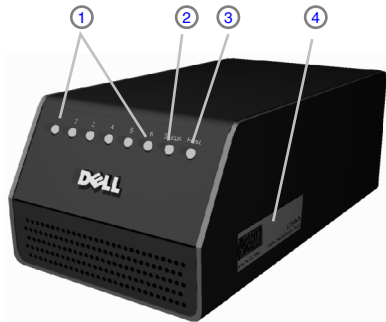




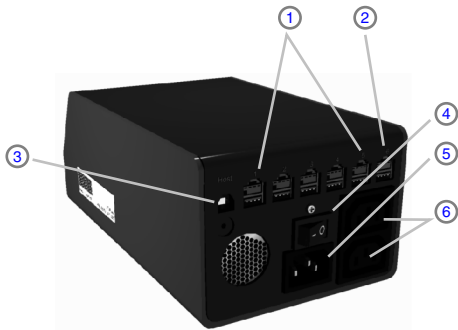
Setting Up Your Powered USB Hub

CAUTION:
Before you set up and operate your Dell™ hub, see the safety instructions in the *Product Information Guide*

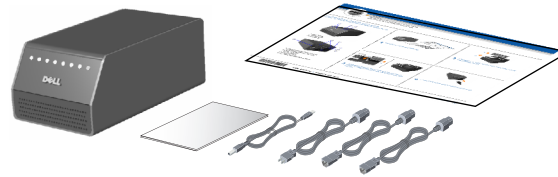
This placemat is only intended for quick reference.
Consult your *Product Information Guide* for complete details



- 1. Port LEDs (6)
- 2. Status LED
- 3. Host LED
- 4. Service Tag Label



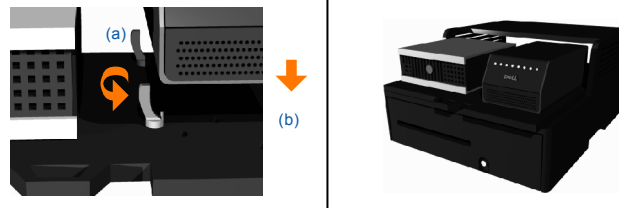
- 1. USB Peripheral Ports (+12 V) (5)
- 2. USB Peripheral Port (+24 V)
- 3. USB Host Port
- 4. Power Switch
- 5. AC Power Port
- 6. AC Pass-Through Power Ports (2)



1 Unpack your Powered USB Hub



2 If Integrator¹ is used, remove cover from Integrator (a) and slide tray out (b)



3 If Integrator is used, install retainers (a) and hub (b)
NOTE: If Integrator is not used, place hub in secured position



4 Connect AC power cord to hub and power outlet



0TF663A00

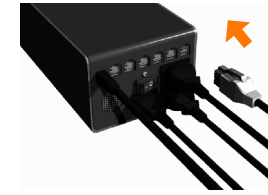




5 Connect one AC pass-through power cord to hub and Host PC. Connect other AC pass-through power cord to hub and monitor.
NOTE: Do not connect AC pass-through connectors to other devices without checking the *Product Information Guide*



6 Connect USB cable to hub and Host PC



7 Connect peripheral² cables to peripherals and then hub when hot-plugging. NOTE: This order must be observed or damage may result to peripherals and/or hub



8 Turn power switch on. Ensure green "Status" LED is illuminated

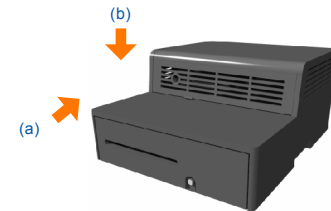


(Windows XP)



9 Allow Windows to install drivers for devices. Ensure green "Host" and green "Port" LEDs are illuminated. Amber "Port" LEDs indicate over-current

(Windows 2000)



10 If Integrator is used, slide Integrator tray in (a) and replace cover (b)

