

OptiPlex 5055 Tower

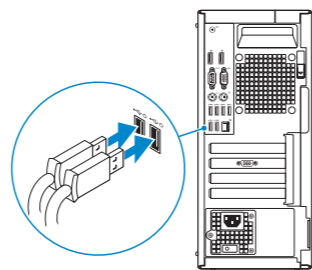
Quick Start Guide

Kiirjuhend



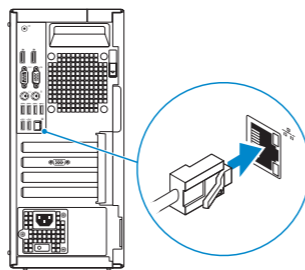
1 Connect the keyboard and mouse

Ühendage klaviatuur ja hiir



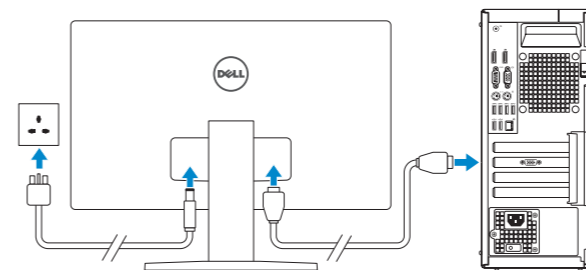
2 Connect the network cable — optional

Ühendage võrgukaabel – valikuline



3 Connect the display

Ühendage monitor



NOTE: If you ordered your computer with a discrete graphics card, connect the display to the discrete graphics card.

MÄRKUS: Kui tellisite arvuti diskreetse graafikakaardiga, ühendage monitor sellega.

Product support and manuals

Tugiteenused ja juhendid

Dell.com/support

Dell.com/support/manuals

Dell.com/support/windows

Contact Dell

Delli kontaktteave

Dell.com/contactdell

Regulatory and safety

Regulatiivsus ja ohutus

Dell.com/regulatory_compliance

Regulatory model

Regulatiivne mudel

D18M

Regulatory type

Regulatiivne tüüp

D18M004

Computer model

Arvuti mudel

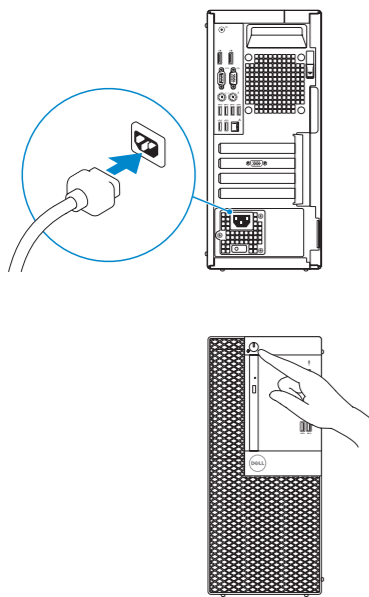
OptiPlex 5055 Tower



034RTHA01

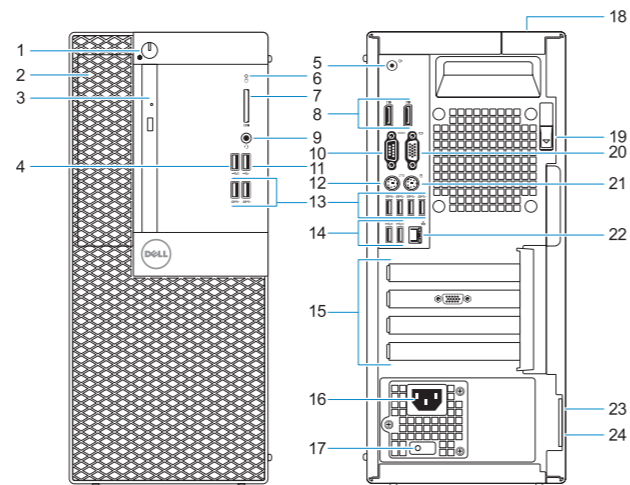
4 Connect the power cable and press the power button

Ühendage toitekaabel ja vajutage toitenuppu



Features

Funktsioonid



1. Power button and power light
2. 5.25-inch internal bay
3. Optical drive (optional)
4. USB 2.0 port with PowerShare
5. Line-out port
6. Hard-drive activity light
7. Memory card reader (optional)
8. DisplayPorts
9. Headset port
10. Serial port
11. USB 2.0 port
12. PS/2 keyboard port
13. USB 3.1 Gen 1 ports

14. USB 2.0 ports (supports Smart Power On)
15. Expansion card slots
16. Power connector port
17. Power supply diagnostic light
18. Cable cover lock slot
19. Release latch
20. VGA port (optional)
21. PS/2 mouse port
22. Network port
23. Kensington security cable slot
24. Padlock ring

1. Toitenupp ja toite märgutuli
2. 5,25-tolline sisemine lahter
3. Optiline draiv (valikuline)
4. USB 2.0-port koos PowerShare'iga
5. Väliste heliseadmete port
6. Kõvaketta aktiivsuse märgutuli
7. Mälukaardilugeja (valikuline)
8. Ekraanipordid
9. Peakomplekti port
10. Jadaport
11. USB 2.0-port
12. PS/2 klaviatuuri port
13. USB 3.1 1. põlvkonna pordid

14. USB 2.0-pordid (toetavad funktsiooni Smart Power On)
15. Laienduskaardi pesad
16. Toitejuhtme port
17. Toite diagnostika märgutuli
18. Kaablikaane lukustuspesa
19. Vabastusriiv
20. VGA-port (valikuline)
21. PS/2 hiire port
22. Võrguport
23. Kensingtoni turvakaabli pilu
24. Lukustusrõngas