

OptiPlex 5055 Small Form Factor

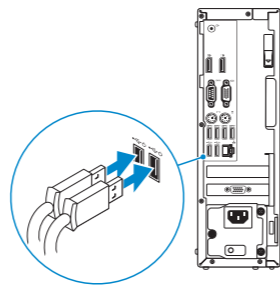
Quick Start Guide

Guia de consulta rápida



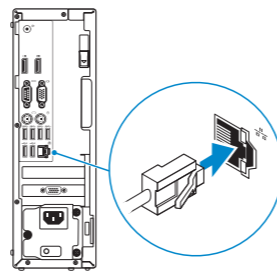
1 Connect the keyboard and mouse

Conecte o teclado e o mouse



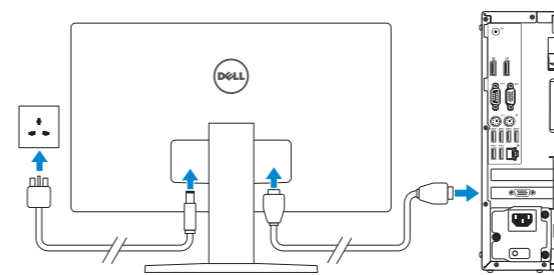
2 Connect the network cable — optional

Conecte o cabo da internet – opcional



3 Connect the display

Conecte a tela



NOTE: If you ordered your computer with a discrete graphics card, connect the display to the discrete graphics card.

NOTA: se você comprou o seu computador com uma placa de vídeo dedicada, conecte o monitor à placa de vídeo dedicada.

Product support and manuals
Suporte ao produto e manuais

Contact Dell
Entre em contato com a Dell

Regulatory and safety
Normas e segurança

Regulatory model
Modelo regulamentar

Regulatory type
Tipo regulamentar

Computer model
Modelo do computador

[Dell.com/support](https://www.dell.com/support)
[Dell.com/support/manuals](https://www.dell.com/support/manuals)
[Dell.com/support/windows](https://www.dell.com/support/windows)

[Dell.com/contactdell](https://www.dell.com/contactdell)

[Dell.com/regulatory_compliance](https://www.dell.com/regulatory_compliance)

D11S

D11S003

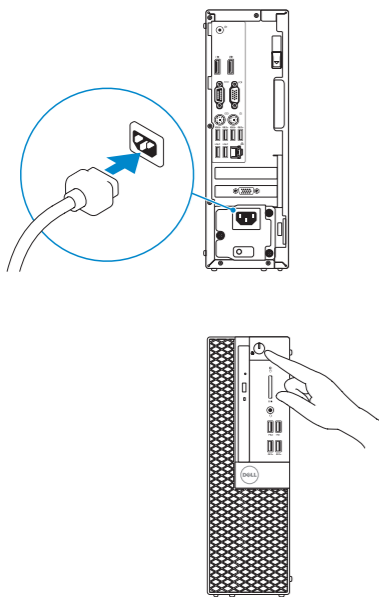
OptiPlex 5055 SFF



0WGV77A01

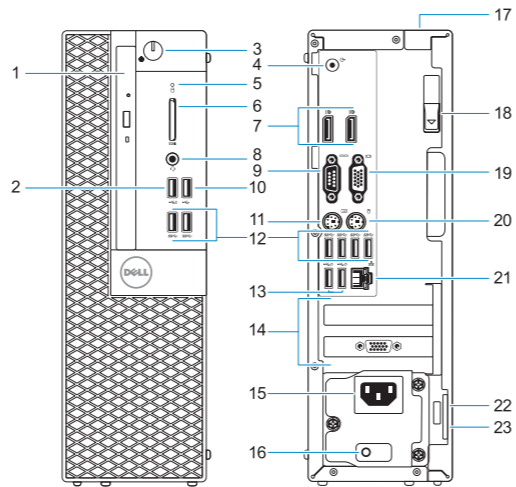
4 Connect the power cable and press the power button

Conecte o cabo de alimentação e pressione o botão liga/desliga



Features

Recursos



1. Optical drive (optional)
2. USB 2.0 port with PowerShare
3. Power button and power light
4. Line-out port
5. Hard-drive activity light
6. Memory card reader (optional)
7. DisplayPorts
8. Headset port
9. Serial port
10. USB 2.0 port
11. PS/2 keyboard port
12. USB 3.1 Gen 1 ports

13. USB 2.0 ports (supports Smart Power on)
14. Expansion card slots
15. Power connector port
16. Power supply diagnostic light
17. Cable cover lock slot
18. Release latch
19. VGA port (optional)
20. PS/2 mouse port
21. Network port
22. Kensington security cable slot
23. Padlock ring

1. Unidade óptica (opcional)
2. porta USB 2.0 com PowerShare
3. Botão liga/desliga e luz de energia
4. Porta de saída de linha
5. Luz de atividade do disco rígido
6. Leitor de cartão de memória (opcional)
7. DisplayPorts
8. Porta para headset
9. Porta serial
10. Porta USB 2.0
11. Porta de teclado PS/2
12. Portas USB 3.1 de 1ª geração

13. Portas USB 2.0 (compatível com Smart Power On, ativação inteligente)
14. Slots da placa de expansão
15. Porta do conector de alimentação
16. Luz de diagnóstico da fonte de alimentação
17. Slot de trava da tampa de cabos
18. Trava de liberação
19. Porta VGA (opcional)
20. Porta de mouse PS/2
21. Porta de rede
22. Encaixe do cabo de segurança Kensington
23. Anel de cadeado