

OptiPlex 5055 Small Form Factor

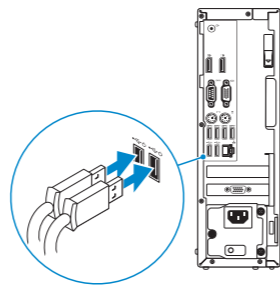
Quick Start Guide

Kiirjuhend



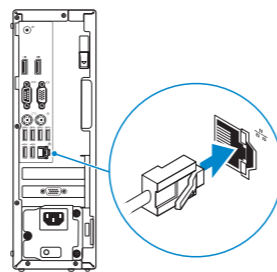
1 Connect the keyboard and mouse

Ühendage klaviatuur ja hiir



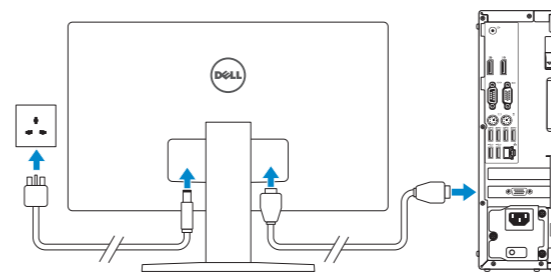
2 Connect the network cable — optional

Ühendage võrgukaabel – valikuline



3 Connect the display

Ühendage monitor



NOTE: If you ordered your computer with a discrete graphics card, connect the display to the discrete graphics card.

MÄRKUS: Kui tellisite arvuti diskreetse graafikakaardiga, ühendage monitor sellega.

Product support and manuals

Tugiteenused ja juhendid

Contact Dell

Delli kontaktteave

Regulatory and safety

Regulatiivsus ja ohutus

Regulatory model

Regulatiivne mudel

Regulatory type

Regulatiivne tüüp

Computer model

Arvuti mudel

[Dell.com/support](https://www.dell.com/support)

[Dell.com/support/manuals](https://www.dell.com/support/manuals)

[Dell.com/support/windows](https://www.dell.com/support/windows)

[Dell.com/contactdell](https://www.dell.com/contactdell)

[Dell.com/regulatory_compliance](https://www.dell.com/regulatory_compliance)

D11S

D11S003

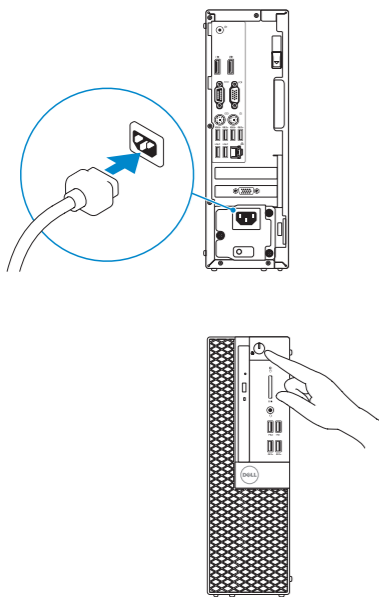
OptiPlex 5055 SFF



0J74YCA01

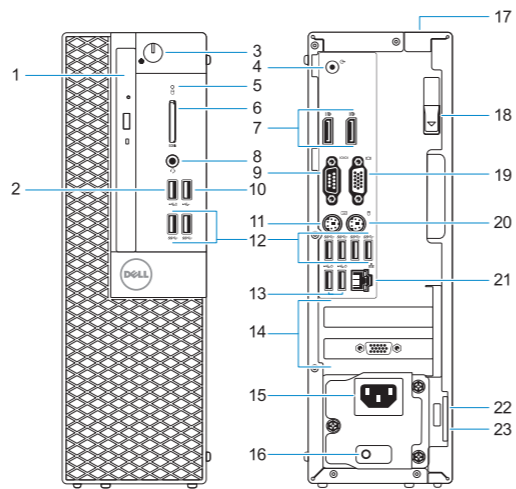
4 Connect the power cable and press the power button

Ühendage toitekaabel ja vajutage toitenuppu



Features

Funktsioonid



- | | | | |
|----------------------------------|---|--|----------------------------------|
| 1. Optical drive (optional) | 13. USB 2.0 ports (supports Smart Power on) | 1. Optiline draiv (valikuline) | 14. Laienduskaardi pesad |
| 2. USB 2.0 port with PowerShare | 14. Expansion card slots | 2. USB 2.0-port koos PowerShare'iga | 15. Toitejuhtme port |
| 3. Power button and power light | 15. Power connector port | 3. Toitenupp ja toite märgutuli | 16. Toite diagnostika märgutuli |
| 4. Line-out port | 16. Power supply diagnostic light | 4. Väliste heliseadmete port | 17. Kaablikaane lukustuspesa |
| 5. Hard-drive activity light | 17. Cable cover lock slot | 5. Kõvaketta aktiivsuse märgutuli | 18. Vabastusriiv |
| 6. Memory card reader (optional) | 18. Release latch | 6. Mälukaardilugeja (valikuline) | 19. VGA-port (valikuline) |
| 7. DisplayPorts | 19. VGA port (optional) | 7. Ekraanipordid | 20. PS/2 hiire port |
| 8. Headset port | 20. PS/2 mouse port | 8. Peakomplekti port | 21. Võrguport |
| 9. Serial port | 21. Network port | 9. Jadaport | 22. Kensingtoni turvakaabli pilu |
| 10. USB 2.0 port | 22. Kensington security cable slot | 10. USB 2.0-port | 23. Lukustusrõngas |
| 11. PS/2 keyboard port | 23. Padlock ring | 11. PS/2 klaviatuuri port | |
| 12. USB 3.1 Gen 1 ports | | 12. USB 3.1. põlvkonna pordid | |
| | | 13. USB 2.0-pordid (toetavad funktsiooni Smart Power On) | |