



# Microsoft Windows 10 IoT Enterprise Threshold 1 for Wyse 5020 and 7020 Thin Clients Maintenance Release 4 Release Notes

Software releases are created to correct defects, make enhancements, or add new features. These releases are tested on all current, actively shipping platforms and operating systems as applicable. This release notes contain details on the supported platforms, any changes in the configuration settings and licensing details as well. The bug fixes along with the workarounds are documented in the release notes. Any changes in the feature functionality from an end-user perspective are listed with the description of each feature at a high level.

**Current Version:** 0A79

**Release Date:** August 2018

**Previous Version:** 0A62

## Contents

Release type and definition.....	1
New features.....	2
Boot sequence in BIOS.....	2
Supported peripherals.....	3
System preparation tool—Sysprep UI.....	3
Unified Write Filter.....	6
ENERGY STAR specifications.....	8
Support matrix.....	8
Fixed issues.....	11
Known issues.....	11
Device manager components and driver versions.....	12
Operating system components.....	14
Application, feature, and file details.....	14
Installed product details.....	15
Quick Fix Engineering—QFE details.....	17
Used and free space information.....	18
Important notes.....	18

## Release type and definition

This maintenance release (MR4) is for the following platforms that runs Windows 10 IoT Enterprise operating system:

**Table 1. Build number and platform**

Build number	Platform
0A79	Wyse 5020 thin client with Win10 IoT
	Wyse 7020 thin client with Win10 IoT
	Wyse 7020 accelerated graphics thin client with Win10 IoT

**NOTE:** There are no further maintenance releases for Wyse 5020, 7020, and 7020 accelerated graphics thin client with Windows 10 IoT Enterprise.

**CAUTION:** Please follow proper write filter and Windows Page File usage instructions at all times. Such instructions include making sure that the write filter is enabled during regular use and is disabled only temporarily by an administrator when required for image upgrades, applying security patches, registry changes and application installation. The write filter should be re-enabled as soon as such tasks are completed. Such instructions further include never enabling the Windows Page File feature during regular use of the thin client. Any operation of a Dell Wyse Windows Embedded Thin Client with the write filter that is turned off during regular use and/or with the Windows Page file enabled will prematurely wear out your Flash/SSD storage, decrease performance and decrease the lifespan of the product. Dell is not responsible for, and will not, warrant, support, repair or replace any thin client device or component that fails to operate properly due to a failure to follow these instructions.

## New features

- Wyse Device Agent (WDA) is updated to v14.2.0.51.
- Boot Agent (BA) is updated to v3.7.7.
- VMware Horizon Client is updated to v4.8.
- Citrix Receiver is updated to v4.11.
- Citrix HDX RealTime Media Engine is updated to v2.4.
- Dell Thin Client Application is updated to v10.0.0.20.
- Windows Defender is updated to v1.271.738.0.
- Dell KM632 wireless keyboard caps lock indicator is updated to v2.1.11.1 to address the unquoted service path vulnerability issue
- Unified Write Filter tray utility—**UWFTray.exe** is updated to v1.0.4.12.
- UWFSvc—**UWFsvc.exe** is updated to v1.0.4.12.
- Wyse Easy Setup v1.0.1.3289 is integrated.
- The Win+L key is enabled as an operating system feature.
- C-A-D map is enabled by default.
- QFEs are installed until June 2018.

## Boot sequence in BIOS

**Table 2. Boot sequence in BIOS**

Boot priority order	Component
First boot	Windows Boot Manager
Second boot	Merlin Non-Pxe
Third boot	SATA 0: 32 GB SATA Flash drive
Forth boot	SATA: 1
Fifth boot	PXE LAN
Sixth boot	ATAPI CD

Boot priority order	Component
Seventh boot	USB HDD
Ninth boot	USB CD-ROM
10th boot	CLOUD DESKTOP

## Supported peripherals

- Dell Pro stereo headset UC300
- Dell USB soundbar—AC511
- Dell 2.0 speaker system—AE215
- Jabra Pro 935 MS wireless headset (Mono)
- Logitech B525HD webcam
- Dell Tray Load CD/DVD player (DW316)
- Dell USB wired keyboard—KB216
- Dell USB wired optical mouse—MS116
- Dell USB wired laser mouse
- Dell 24 Monitor—E2417H
- Dell 23 Monitor—E2316H
- Dell 22 Monitor—E2216H
- Dell 22 Monitor—E2216HV
- Dell 20 Monitor—E2016H
- Dell 20 Monitor—E2016HV
- Dell 20 Monitor—E2016
- Dell 19 Monitor—E1916H
- Dell 19 Monitor—E1916HV
- Dell 27 Monitor—P2717H
- Dell 24 Monitor—P2417H with stand
- Dell 23 Monitor—P2317H
- Dell 22 Monitor—P2217H with stand
- Dell 20 Monitor—P2017H
- Dell 22 Monitor—P2217
- Dell 24 Monitor—MR2416
- Dell 24 Monitor—P2415Q 4K2K (UHD)
- Dell Mono unmanaged printer—E515dn
- Dell Color unmanaged printer—E525w
- Dell Mono managed printer—C2660dn
- Dell Color managed printer—S5840cdn
- DP to HDMI converter
- DP to DVI converter
- DP to VGA converter

## System preparation tool—Sysprep UI

The System Preparation tool **Sysprep.exe** can be used with other deployment tools to install Microsoft Windows operating systems. The installation can be completed with minimal intervention by an administrator.

**Sysprep.exe** calls other executable files during Windows installation. **Sysprep.exe** is located in the `%WINDIR%\system32\sysprep` directory. The file must run from the `%WINDIR%\system32\sysprep` directory, and the Windows version on which it is installed.

The following features are not supported in this release:

- There is no integrated administrator account.
- Microsoft has removed the following Windows 10 features in this release:
  - Measured boot
  - Fast Boot
  - Refresh PC and Reset PC
  - Anti malware
  - Custom branding
  - WIM boot
  - Bing sports
  - Xbox Live
  - Skype
  - Zune videos
  - Zune music
  - People
  - Windows communication software
  - Office note
  - Maps
  - Bing news
  - Store app
  - Edge
  - Cortana
- Boot from USB is not supported, enable this option in BIOS.
- Native PXE imaging support is not available in this version as the boot mode is set to UEFI.
- The following lockdown features are not supported:
  - USB filter
  - Keyboard filter
  - Gesture filter
- Embedded Lockdown Manager is not supported.

## Running Custom Sysprep tool

### Prerequisite

- Disable Unified Write Filter.
- Logging framework must be available on your thin client.
- PowerShell script execution environment, Custom Sysprep, Configuration Sysprep (SCCM) scripts, and Hostname calculation feature must be available.
- Reduce the flash drive or hard drive size to less than 32 GB.

### About this task

When you access the operating system using Custom Sysprep, it is configured according to OEM specification or customer requirement. The information in the user interface is saved as configuration files (.xml) and is used for the Custom Sysprep process. To run the Custom Sysprep tool, do the following:

### Steps

- 1 Go to `<drive C>\Windows\Setup`.
- 2 Right-click **Build\_Master.cmd**, and select **Run as administrator**.  
The **Config Master** window is displayed.

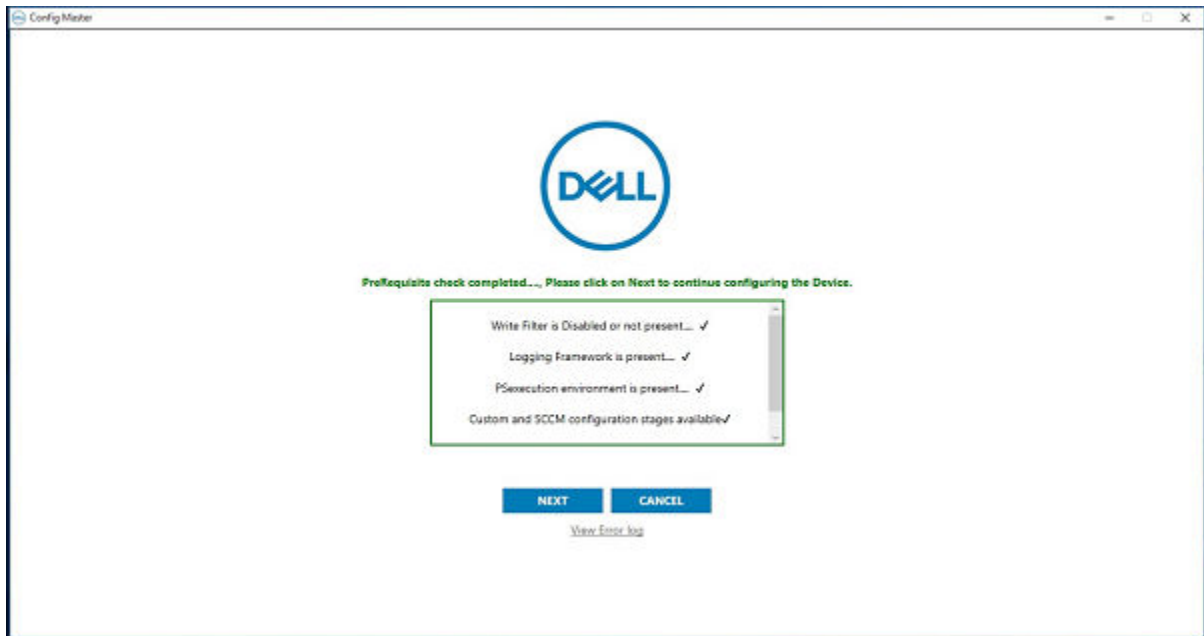


Figure 1. Config Master

- 3 Click **Next**.  
The **Configuration** screen is displayed.

**Configurations**

Custom configuration     SCCM configuration

**Host Name calculation**

Enable     Disable     Retain current settings

**Configure Domain options**

User Name:

Password :

Domain :

OU :      Configure OU option    **Save Credentials**

**Configure local account credentials**

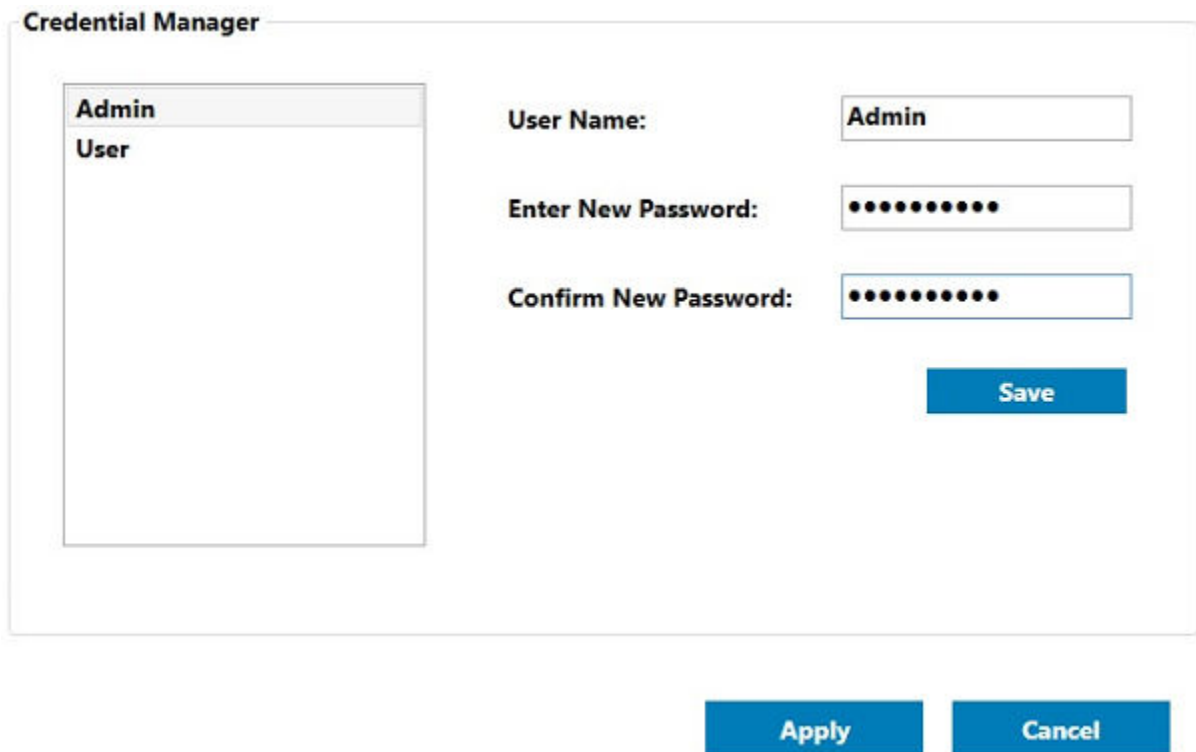
Enable local account credential changes

**Next**    **Cancel**

Figure 2. Configurations

- 4 Select **Custom configuration** in the **Configurations** section.
- 5 Enable or disable hostname calculation in the **Host Name calculation** section.

- 6 Enter the appropriate values in the **Configure Domain options** section, and click **Save Credentials**.
- 7 Click **OK** when prompted.
- 8 Select **Enable local account credentials changes**.  
The changes that are made to the credentials are applied.
- 9 Click **Next**.  
The **Credentials Manager** page is displayed.



**Figure 3. Credential manager**

- 10 Select the user account, and type the login credentials.
- 11 Click **Save**.
- 12 Click **Apply** to save the changes.  
This process takes 5–10 minutes to complete. The device turns off after the Sysprep process is complete.

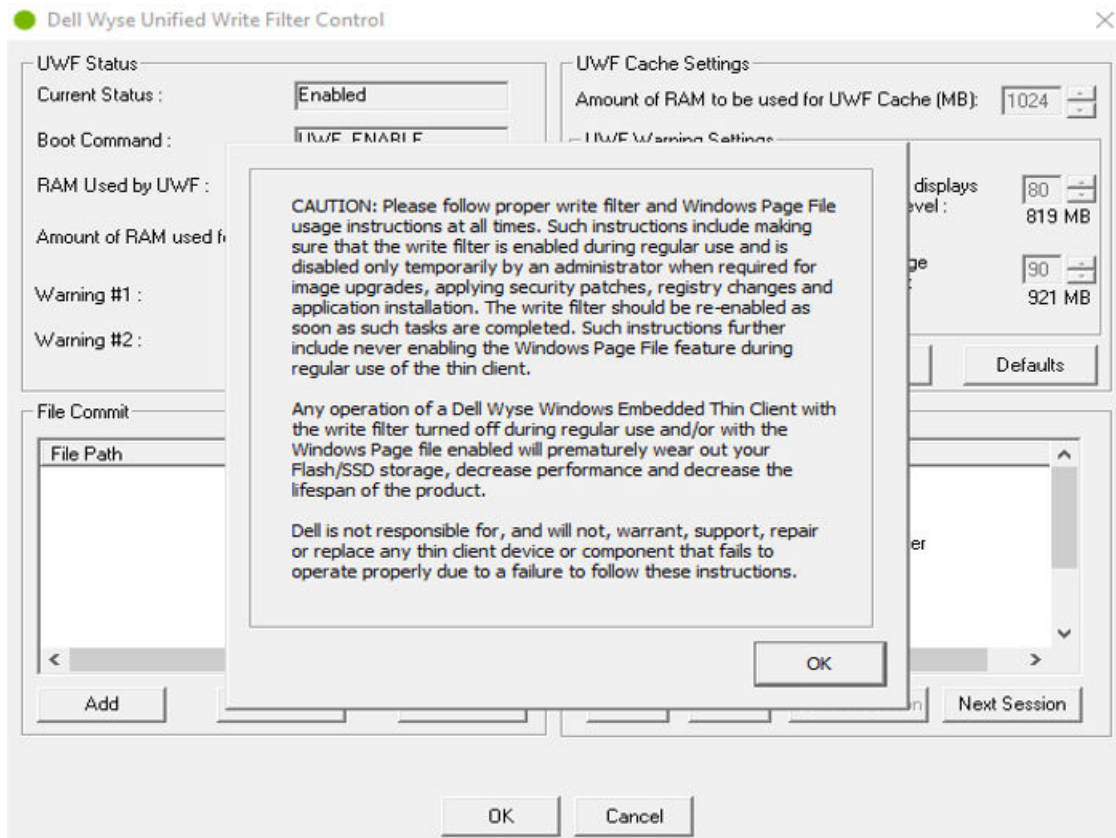
**NOTE:** If SFC scan is enabled, the process may take 45–60 minutes to complete.

## Unified Write Filter

To enable or disable the Write Filter, see *Microsoft Windows 10 IoT Enterprise Administrators Guide* at [Dell support site](#).

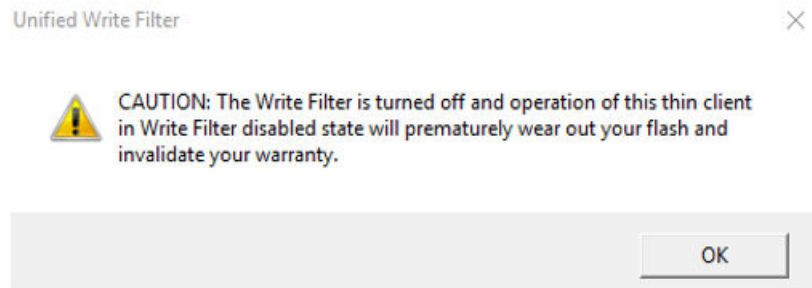
**CAUTION:** Please follow proper write filter and Windows Page File usage instructions at all times. Such instructions include making sure that the write filter is enabled during regular use and is disabled only temporarily by an administrator when required for image upgrades, applying security patches, registry changes and application installation. The write filter should be re-enabled as soon as such tasks are completed. Such instructions further include never enabling the Windows Page File feature during regular use of the thin client. Any operation of a Dell Wyse Windows Embedded Thin Client with the write filter turned off during regular use and/or with the Windows Page file enabled will prematurely wear out your Flash/SSD storage, decrease performance and decrease the lifespan of the product. Dell is not responsible for, and will not, warrant, support, repair or replace any thin client device or component that fails to operate properly due to a failure to follow these instructions.

- When you disable the Write Filter from the system tray, a caution message is displayed.



**Figure 4. UWF caution message**

- After the Write Filter is disabled, a caution message is displayed during every reboot to notify that the client is used in Write Filter disable state.



**Figure 5. UWF caution pop-up**

## UWF file folder exclusions

- C:\Users\Admin\AppData\LocalLow
- C:\Users\User\AppData\LocalLow
- C:\Program Files\Windows Defender
- C:\Program Files (x86)\Windows Defender
- C:\Windows\WindowsUpdate.log
- C:\Windows\Temp\MpCmdRun.log
- C:\ProgramData\Microsoft\Windows Defender
- C:\program files\Wyse\WDA\Config

- C:\Users\Public\Documents\Wyse
- C:\Wyse\WCM\ConfigMgmt
- C:\Wyse\WCM
- C:\Wyse\WDA
- C:\Windows\System32\spp

## UWF Registry exclusions

- HKLM\Software\Wyse\ConfigMgmt
- HKLM\SYSTEM\CurrentControlSet\Control\WNT\UWFSvc
- HKLM\SOFTWARE\Microsoft\Windows Defender
- HKLM\SOFTWARE\Microsoft\Windows\CurrentVersion\HomeGroup
- HKLM\SOFTWARE\Microsoft\Windows NT\CurrentVersion\NetworkList
- HKLM\SYSTEM\WPA

## ENERGY STAR specifications

Wyse 5020, 7020, and 7020 accelerated graphics thin client with Windows 10 IoT Enterprise Threshold 1 meets the ENERGY STAR Threshold 1 standards.

The following values are set by default in the Control Panel applet of Power options:

- Supports WOL power off states.
- Supports idle state wake.
- Screen off timer set to 10 minutes.
- Sleep timer set to 15 minutes.

## Support matrix

This section provides information about the test environment, product information, BIOS, and processor.

## Build details

**Table 3. Build details**

Feature	Specification
Platform	Wyse 5020, 7020, 7020 accelerated graphics thin client
Operating system	Windows 10 IoT Enterprise Threshold 1
Build number and size	GOG0_0A79_32GB.exe—12.6 GB (13,615,063,246 bytes)
BIOS version	2.0F
RAM	4 GB
Flash drive	32 GB
Languages	en-US, ja-JP, fr-FR



# Product information

**Table 4. Wyse 5020 thin client**

Feature	Specification
Product name	Windows 10 Enterprise 2015 LTSB
Model name	Wyse 5020 thin client
Product version	11.04 (Build 0A79.30GB)
Windows Embedded version	10.0 Build—10240
Manufacturer	Dell Inc.

**Table 5. Wyse 7020 thin client**

Feature	Specification
Product name	Windows 10 Enterprise 2015 LTSB
Model name	Wyse 7020 thin client
Product version	11.04 (Build 0A79.30GB)
Windows Embedded version	10.0 build—10240
Manufacturer	Dell Inc.

**Table 6. Wyse 7020 accelerated graphics thin client**

Feature	Specification
Product name	Windows 10 Enterprise 2015 LTSB
Model name	Wyse 7020 accelerated graphics thin client
Product version	11.04 (Build 0A79.30GB)
Windows Embedded version	10.0 build—10240
Manufacturer	Dell Inc.

# Tested environments

**Table 7. Tested environments**

Wyse Device Manager version	5.7.3
Wyse Management Suite version	1.2
USB Imaging Tool version	3.1.0
Boot Agent version	3.7.7
Language control application version	1.0.0

SCCM version	Microsoft System Center Configuration Manager 2016 version 1606 Console version: 5.0.8412.1313 Site version: 5.0.8412.1000
--------------	--

## BIOS details

**Table 8. BIOS details**

Feature	Specification
BIOS version	2.0F
FD file name	20F.fd
File type	.fd file
Size	8.00 MB—8,388,608 bytes

## Processor details

**Table 9. For Wyse 5020 and 7020 accelerated graphics thin client**

Feature	Specification
Name	AMD GX-415GA SOC with Radeon(tm) HD Graphics
Speed	1500 MHz
Address width	64 bits
Data width	64 bits

**Table 10. For Wyse 7020 thin client**

Feature	Specification
Name	AMD GX-420CA SOC with Radeon(tm) HD Graphics
Speed	2000 MHz
Address width	64 bits
Data width	64 bits

# Fixed issues

Table 11. Fixed issues

Issue number	Description
WS-2193	Wyse Device Agent does not report IP address to the Wyse Management Suite.
WS-2194	Wyse Management Suite does not report Custom fields from Windows 10 IoT Enterprise devices.
WS-2195	C-A-D tool—Win+L Hotkey.
WS-2196	Incorrect passwords are displayed in the <b>Registry-Auto login</b> field.
WS-2197	Blank space is added in the unquoted service path of Wyse Device Agent (WDA).

# Known issues

Table 12. Known issues

Issue number	Description	Workaround
WS-640	Low memory issue is observed when you set the Write Filter threshold to 512 MB on thin clients, and the application crosses the threshold limit on Wyse 7020 thin client, Wyse 7020 accelerated graphics thin client, and Wyse 5020 thin client.  For example, running 1080p video on multiple tabs simultaneously (more than three tabs).	There is no workaround available.
WS-1362	When you use SCCM client to pull the image, the system fails to boot. This is a known issue on Windows 10 IoT operating system.	There is no workaround available.
WS-2141	The <b>Windows To Go</b> window does not open when you click the icon in the <b>Control panel</b> with write filter enabled.	Disable write filter.
WS-2080	Low memory issue is observed when you open multiple applications.	Install Overlay Optimizer. For installation steps, see Overlay Optimizer Release Notes at <a href="https://downloads.dell.com/wyse/">downloads.dell.com/wyse/</a> .
WS-2154	The error message <code>Windows could not complete the installation. To install Windows on this computer, restart the installation is displayed</code> , while imaging from Wyse Management Suite server with Logitech HD Webcam C930e and when multiple USB drives are connected to the device.	During imaging, do not connect any external devices except keyboard and mouse.
WS-1329	When you move an application to other location in the start screen, the application gets disabled.	There is no workaround available.
WS-1525	Unknown IP as subnet is observed during PAD imaging.	There is no workaround available.

Issue number	Description	Workaround
WS-566	After running custom Sysprep, the time zone does not change when you switch between the MUI languages.	There is no workaround available.
WS-642	Black screen is displayed on all six connected monitors when you use keyboard or mouse to wake up the thin client.	There is no workaround available.
WS-1734	Low memory issue may be observed when YouTube videos are played.	There is no workaround available.
WS-1321	The error message <i>Your computer is low on memory</i> is displayed in addition to Citrix HDX engine error message. This issue is observed due to the limitation of the Write Filter threshold being set to 512 MB in thin clients. Also, when the application crosses the threshold limit, the low memory issue is displayed as the Write Filter cannot handle that scenario. For example, playing 1080p video in Citrix session on multiple tabs simultaneously (more than three tabs)	There is no workaround available.
WS-1335	Bluetooth mouse may stop working even after the device is started from the sleep mode.	There is no workaround available.
WS-1380	Microsoft Windows Media player displays the error <i>Video Card problem</i> when you switch the screen from extended display to duplicate display.	There is no workaround available.
WS-2216	Sometimes user profiles are created as temporary profiles when the profiles are created with admin and user privileges. This issue is observed in Wyse 5020 thin clients.	There is no workaround available.

## Device manager components and driver versions

**Table 13. Device manager components and driver versions**

Component name	Driver version	Platform
Speakers—Realtek High Definition audio	10.0.10240.16384	Wyse 5020, 7020, and 7020 accelerated graphics thin client
Intel Wireless Bluetooth	19.41.0.1	
Microsoft Bluetooth enumerator	10.0.10240.16515	
Microsoft Bluetooth LE enumerator	10.0.10240.16766	
ACPI x64-based PC	10.0.10240.16384	
Dell Wyse RAMDisk driver	5.0.2183.5	
32 GB SATA flash drive	10.0.10240.16384	
AMD Radeon HD 8400E	15.201.2401.0	
USB input device	10.0.10240.17889	
Standard SATA AHCI controller	10.0.10240.16384	
HID keyboard device	10.0.10240.16384	
Dell Wyse flash driver	1.0.7.7	

Component name	Driver version	Platform
HID-compliant mouse	10.0.10240.16384	
Generic PnP monitor	10.0.10240.16384	
Bluetooth device—Personal Area Network	10.0.10240.17488	
Bluetooth device—RFCOMM Protocol TDI	10.0.10240.16384	
Intel Dual Band Wireless—AC 7260	18.33.12.2	
Realtek PCIe GBE family controller	10.10.630.2016	
Microsoft device association root enumerator	10.0.10240.16384	
Microsoft GS Wavetable Synth	10.0.10240.16384	
AMD High Definition audio device	10.0.0.1	
Realtek High Definition audio	6.0.1.8397	
Microsoft Storage Spaces Controller	10.0.10240.16384	
ACPI fixed feature button	10.0.10240.17797	
ACPI power button	10.0.10240.17797	
AMD SMBus	5.12.0.31	
Composite bus enumerator	10.0.10240.16384	
Direct memory access controller	10.0.10240.17797	
Microsoft System Management BIOS driver	10.0.10240.16384	
PCI standard host CPU bridge	10.0.10240.17797	
System CMOS/real time clock	10.0.10240.17797	
UMBus root bus enumerator	10.0.10240.16384	
AMD USB3.0 eXtensible host controller—1.0 (Microsoft)	10.0.10240.16461	
Generic USB hub	10.0.10240.16603	
Standard Enhanced PCI to USB host controller	10.0.10240.17643	
Standard OpenHCD USB host controller	10.0.10240.17643	
USB root hub	10.0.10240.17643	
USB root hub (xHCI)	10.0.10240.16603	
AMD GX-424CA SOC with Radeon HD Graphics	10.0.10240.17889	Wyse 7020 thin client
AMD GX-415GA SOC with Radeon HD Graphics	10.0.10240.17889	Wyse 5020 and 7020 accelerated thin client

# Operating system components

**Table 14. Operating system components**

Drivers/files	Version
Display adapter	Wyse 7020 thin client—AMD Radeon (TM) HD 8400E v15.201.2401.0 Wyse 5020 thin client—AMD Radeon (TM) HD 8330E v15.201.2401.0  Wyse 7020 accelerated graphics thin client—AMD Radeon (TM) HD 8330E v15.201.2401.0, AMD Radeon E6460.  Application—AMD Catalyst Install Manager v8.0.916.0
Ethernet adapter	Realtek PCIe GBE Family Controller—version 10.10.630.2016 in <b>Device Manager</b>
Audio	AMD High Definition audio device—version 10.0.0.1 in <b>Device Manager</b> . Realtek High Definition audio—version 6.0.1.8397 in <b>Device Manager</b> .
Wireless adapter	Intel Dual Band Wireless-AC 7260—version 18.33.12.2 in <b>Device Manager</b> . Intel PROSet/Wireless software—version 20.40.0 in <b>Programs and features</b> .
Bluetooth	Intel Wireless Bluetooth—version 19.41.0.1 in <b>Device Manager</b> . Intel Wireless Bluetooth—version 20.40.0 in <b>Program and features</b> .
TPM	Supported
Wyseramdisk.sys—Wyse RAMDisk driver	5.0.2183.5
USB 3.0	AMD USB 3. 0 eXtensible host controller—1.0 (Microsoft)—version 10.0.10240.16461 in <b>Device Manager</b> .
Dell Wyse flash driver—Flash.sys	Version 1.0.7.7 in <b>Device Manager</b>
Dell KM632 Wireless keyboard CAPS Lock indicator	Version 2.1.11.1 in <b>Program and features</b>
Dell Open printer driver	Version 1.91.7882.0 in <b>Program and features</b>
Keyboard device driver	Version 10.0.10240.16384 in <b>Device Manager</b>

# Application, feature, and file details

**Table 15. Application, feature, and file details**

Applications/features/file	Compatibility and version
System Center Configuration Manager (SCCM) client	5.00.8412.1307—version displayed in <b>Configuration Manager</b> under <b>Control Panel</b> )
Remote Desktop Connection (RDC)	Remote Desktop Protocol v10.0 is supported. Shell Version v10.0.10240

Applications/features/file	Compatibility and version
	Control v10.0.10240
Internet Explorer	11.0.10240.17889
mstsc.exe	10.0.10240.17831
NetXClean.exe	3.0.0.8
Master.exe file description—Master_UI	1.0.0.10
UWFTary.exe	1.0.4.12
Unified Write Filter Manager—uwfmgr.exe	10.0.10240.17488
UWFSvc.exe	1.0.4.12
DeleteFreeSpace.exe	1.2.1.0
Disk_Size.exe	3.0.0.5
DWKbFilter.sys	2.3.0.4
DWKbFilterMon.exe	2.2.0.4
DWKbFilterWatchdog.exe	2.2.0.4
RAMDiskSize.exe	1.0.0.2
LicenseStore.exe	1.0.0.10
LanguageConfig.exe	1.0.0.2
tpm_app.exe	1.0.0.6
ArchiveInfo.exe	1.0.0.3
wifitask.exe	10.0.10240.17738
dwm.exe	10.0.10240.16384

## Installed product details

**Table 16. Installed product details**

Product name	Publisher	Version
Citrix Receiver 4.11	Citrix Systems, Inc.	14.11.0.17061
Citrix HDX RealTime Media Engine 2.4	Citrix Systems, Inc.	2.4.0.1233
Ericom PowerTerm InterConnect for thin clients	Ericom Software	12.0
Ericom connect client	Ericom Software	7.6
VMware Horizon client	VMware, Inc.	4.8.0.1562
Dell KM632 Wireless keyboard Caps Lock Indicator	Dell Inc.	2.1.11.1
Dell Open Print Driver	Dell Inc.	1.91.7882.0
Wyse Device Agent	Dell Inc.	14.2.0.51
PrintTicket Translation database	ThinPrint GmbH	11.0.229.2

<b>Product name</b>	<b>Publisher</b>	<b>Version</b>
ThinPrint Viewture	ThinPrint GmbH	11.22.2.3
TightVNC	GlavSoft LLC.	2.6.4.0
Microsoft Visual C++ 2005 Redistributable (x64)	Microsoft Corporation	8.0.61000
Microsoft Lync VDI 2013	Microsoft Corporation	15.0.4569.1506
Microsoft Silverlight	Microsoft Corporation	5.1.50907.0
Remote Desktop Connection	Microsoft Corporation	10.0.10240.16384
Unified Write Filter Manager	Microsoft Corporation	10.0.10240.16384
Windows Media Player	Microsoft Corporation	12.0.10240.16384
Internet Explorer	Microsoft Corporation	11.00.10240.16384
Windows Journal	Microsoft Corporation	10.0.10240.17022
LicenseManagerShellExt	Microsoft Corporation	10.0.10240.16515
Windows PowerShell	Microsoft Corporation	10.0.10240.16384
Snipping tool	Microsoft Corporation	10.0.10240.16384
Touch keyboard and handwriting panel	Microsoft Corporation	10.0.10240.16384
Microsoft Contacts Import tool	Microsoft Corporation	10.0.10240.16384
Intel Wireless Bluetooth	Intel Corporation	20.40.0
Intel PROSet/wireless software	Intel Corporation	20.40.0
AMD catalyst install manager	Advanced Micro Devices, Inc.	8.0.916.0
Realtek High Definition audio driver	Realtek Semiconductor Corp.	6.0.1.8397
Vulkan Run Time Libraries 1.0.26.0	LunarG, Inc.	1.0.26.0
Microsoft Visual C++ 2008 Redistributable x86	Microsoft Corporation	9.0.30729.4148
Microsoft Visual C++ 2008 Redistributable (x64)- 9.0.21022	Microsoft Corporation	9.0.21022
Microsoft Visual C++ 2008 Redistributable (x64)- 9.0.30729.4148	Microsoft Corporation	9.0.30729.4148
Microsoft Visual C++ 2008 Redistributable (x64)- 9.0.30729.6161	Microsoft Corporation	9.0.30729.6161
Microsoft Visual C++ 2015 Redistributable (x64)- 14.0.24212	Microsoft Corporation	14.0.24212.0
Microsoft Visual C++ 2012 Redistributable (x86)-11.0.61030	Microsoft Corporation	11.0.61030.0
Microsoft Visual C++ 2015 Redistributable (x86)- 14.0.24212	Microsoft Corporation	14.0.24212.0
Microsoft Visual C++ 2008 Redistributable (x86)- 9.0.30729.6161	Microsoft Corporation	9.0.30729.6161
Microsoft Visual C++ 2012 Redistributable (x64)- 11.0.61030	Microsoft Corporation	11.0.61030.0



Product name	Publisher	Version
Microsoft Visual C++ 2012 Redistributable (x64)-11.0.50727	Microsoft Corporation	11.0.50727.1
Microsoft Visual C++ 2013 Redistributable (x86)-12.0.21005	Microsoft Corporation	12.0.21005.1
Microsoft Visual C++ 2013 Redistributable (x64)-12.0.30501	Microsoft Corporation	12.0.30501.0

## Quick Fix Engineering—QFE details

Table 17. Quick Fix Engineering

KB number	Description
KB3081424	Update for Microsoft Windows 10 IoT Enterprise
KB3081431	Security update for Microsoft Windows 10 IoT Enterprise
KB3081436	Security update for Microsoft Windows 10 IoT Enterprise
KB3081438	Update for Microsoft Windows 10 IoT Enterprise
KB3081441	Update for Microsoft Windows 10 IoT Enterprise
KB3081444	Security update for Microsoft Windows 10 IoT Enterprise
KB3081448	Update for Microsoft Windows 10 IoT Enterprise
KB3081452	Update for Microsoft Windows 10 IoT Enterprise
KB3081455	Security update for Microsoft Windows 10 IoT Enterprise
KB3093266	Update for Microsoft Windows 10 IoT Enterprise
KB3095020	Update for Microsoft Windows 10 IoT Enterprise
KB3097617	Security update for Microsoft Windows 10 IoT Enterprise
KB3105210	Security update for Microsoft Windows 10 IoT Enterprise
KB3105213	Security update for Microsoft Windows 10 IoT Enterprise
KB3105514	Update for Microsoft Windows 10 IoT Enterprise
KB3106932	Update for Microsoft Windows 10 IoT Enterprise
KB3116097	Update for Microsoft Windows 10 IoT Enterprise
KB3116869	Security update for Microsoft Windows 10 IoT Enterprise
KB3135174	Security update for Microsoft Windows 10 IoT Enterprise
KB3140745	Security update for Microsoft Windows 10 IoT Enterprise
KB3141032	Update for Microsoft Windows 10 IoT Enterprise
KB3173427	Update for Microsoft Windows 10 IoT Enterprise
KB4284860	Security update for Microsoft Windows 10 IoT Enterprise

# Used and free space information

Table 18. Used and free space details

Platform	Flash drive size	Used space	Free space
Wyse 5020 thin client with Win10 IoT	32 GB	16.3 GB	12.6 GB
Wyse 7020 thin client with Win10 IoT	32 GB	15.6 GB	13.4 GB
Wyse 7020 accelerated graphics thin client with Win10 IoT	32 GB	15.6 GB	13.4 GB

## Important notes

- Wyse Device Agent and Boot Agent must be pushed to the device before imaging from Wyse Management Suite.
- **RAMDiskSize.exe** is created to modify the RAM size to 100 MB in write filter enabled state and 512 MB in write filter disabled state. This RAM size is set for devices with 4 GB RAM and Windows 10 IoT Enterprise.  
If the RAM size is greater than 4 GB, the RAM size is set to 512 MB in both write filter enabled state and disabled state.