




Dell Vostro 5470 Owner's Manual

Regulatory Model: P41G
Regulatory Type: P41G002



Notes, cautions, and warnings

-  **NOTE:** A NOTE indicates important information that helps you make better use of your computer.
-  **CAUTION:** A CAUTION indicates either potential damage to hardware or loss of data and tells you how to avoid the problem.
-  **WARNING:** A WARNING indicates a potential for property damage, personal injury, or death.

© 2013 Dell Inc.

Trademarks used in this text: Dell™, the DELL logo, Dell Precision™, Precision ON™, ExpressCharge™, Latitude™, Latitude ON™, OptiPlex™, Vostro™, and Wi-Fi Catcher™ are trademarks of Dell Inc. Intel®, Pentium®, Xeon®, Core™, Atom™, Centrino®, and Celeron® are registered trademarks or trademarks of Intel Corporation in the U.S. and other countries. AMD® is a registered trademark and AMD Opteron™, AMD Phenom™, AMD Sempron™, AMD Athlon™, ATI Radeon™, and ATI FirePro™ are trademarks of Advanced Micro Devices, Inc. Microsoft®, Windows®, MS-DOS®, Windows Vista®, the Windows Vista start button, and Office Outlook® are either trademarks or registered trademarks of Microsoft Corporation in the United States and/or other countries. Blu-ray Disc™ is a trademark owned by the Blu-ray Disc Association (BDA) and licensed for use on discs and players. The Bluetooth® word mark is a registered trademark and owned by the Bluetooth® SIG, Inc. and any use of such mark by Dell Inc. is under license. Wi-Fi® is a registered trademark of Wireless Ethernet Compatibility Alliance, Inc.

2018 - 07

Rev. A01

Contents

1 Working on your computer.....	5
Before working inside your computer.....	5
Safety instructions.....	5
Turning Off Your Computer.....	6
After working inside your computer.....	6
2 Removing and Installing Components.....	7
Recommended Tools.....	7
System Overview.....	7
Removing the Base Cover.....	8
Installing the Base Cover.....	10
Removing the Battery.....	10
Installing the Battery.....	11
Removing the Hard Drive.....	12
Installing the Hard Drive.....	13
Removing the Coin-Cell Battery.....	13
Installing the Coin-Cell Battery.....	14
Removing the WLAN Card.....	14
Installing the WLAN Card.....	14
Removing the mSATA SSD Card.....	14
Installing the mSATA SSD Card.....	15
Removing the System Fan.....	15
Installing the System Fan.....	17
Removing the Heatsink.....	18
Installing the Heatsink.....	19
Removing the Memory.....	19
Installing the Memory.....	20
Removing the System Board.....	20
Installing the System Board.....	21
Removing the Speakers.....	22
Installing the Speakers.....	23
Removing the Display Assembly.....	23
Installing the Display Assembly.....	25
Removing the Display Bezel.....	25
Installing the Display Bezel.....	27
Removing the Display Panel.....	28
Installing the Display Panel.....	29
Removing the Camera.....	29
Installing the Camera.....	30

3 System Setup.....	31
System Setup Overview.....	31
Boot Sequence.....	31
Navigation keys.....	31
Updating the BIOS	32
System Setup Options.....	32
4 Troubleshooting.....	35
Enhanced Pre-Boot System Assessment — ePSA diagnostics.....	35
Battery status light.....	35
Device status lights.....	35
Beep Codes.....	36
5 Specifications.....	37
Technical Specification.....	37
6 Contacting Dell.....	41
Contacting Dell.....	41

Working on your computer


Before working inside your computer

To avoid damaging your computer, perform the following steps before you begin working inside the computer.

1. Ensure that you follow the [Safety Instruction](#).
2. Ensure that your work surface is flat and clean to prevent the computer cover from being scratched.
3. Turn off your computer.
4. Disconnect all network cables from the computer.

 **CAUTION:** To disconnect a network cable, first unplug the cable from your computer and then unplug the cable from the network device.

5. Disconnect your computer and all attached devices from their electrical outlets.
6. Press and hold the power button while the computer is unplugged to ground the system board.

 **NOTE:** To avoid electrostatic discharge, ground yourself by using a wrist grounding strap or by periodically touching an unpainted metal surface at the same time as touching a connector on the back of the computer.


Safety instructions


Use the following safety guidelines to protect your computer from potential damage and to ensure your personal safety. Unless otherwise noted, each procedure included in this document assumes that the following conditions exist:


- You have read the safety information that shipped with your computer.
- A component can be replaced or, if purchased separately, installed by performing the removal procedure in reverse order.


 **WARNING:** Disconnect all power sources before opening the computer cover or panels. After you finish working inside the computer, replace all covers, panels, and screws before connecting to the power source.

 **WARNING:** Before working inside your computer, read the safety information that shipped with your computer. For additional safety best practices information, see the [Regulatory Compliance Homepage](#)

 **CAUTION:** Many repairs may only be done by a certified service technician. You should only perform troubleshooting and simple repairs as authorized in your product documentation, or as directed by the online or telephone service and support team. Damage due to servicing that is not authorized by Dell is not covered by your warranty. Read and follow the safety instructions that came with the product.

 **CAUTION:** To avoid electrostatic discharge, ground yourself by using a wrist grounding strap or by periodically touching an unpainted metal surface at the same time as touching a connector on the back of the computer.

 **CAUTION:** Handle components and cards with care. Do not touch the components or contacts on a card. Hold a card by its edges or by its metal mounting bracket. Hold a component such as a processor by its edges, not by its pins.

 **CAUTION:** When you disconnect a cable, pull on its connector or on its pull-tab, not on the cable itself. Some cables have connectors with locking tabs; if you are disconnecting this type of cable, press in on the locking tabs before you disconnect the cable. As you pull connectors apart, keep them evenly aligned to avoid bending any connector pins. Also, before you connect a cable, ensure that both connectors are correctly oriented and aligned.


 **NOTE:** The color of your computer and certain components may appear differently than shown in this document.

Turning Off Your Computer


 **CAUTION:** To avoid losing data, save and close all open files and exit all open programs before you turn off your computer.

1. Shut down the operating system:

- Windows 8:

– Point to upper-right corner of the screen and click **Settings**. Click on the  and then select **Shut down**.

- In Windows 7:

1. Click **Start** .
2. Click **Shut Down**.
- 3.

or

1. Click **Start** .
2. Click the arrow in the lower-right corner of the **Start** menu as shown below, and then click **Shut Down**.




2. Ensure that the computer and all attached devices are turned off. If your computer and attached devices did not automatically turn off when you shut down your operating system, press and hold the power button for about 4 seconds to turn them off.

After working inside your computer

After you complete any replacement procedure, ensure that you connect any external devices, cards, and cables before turning on your computer.

1. Connect any telephone or network cables to your computer.

 **CAUTION:** To connect a network cable, first plug the cable into the network device and then plug it into the computer.

2. Connect your computer and all attached devices to their electrical outlets.
3. Turn on your computer.
4. If required, verify that the computer works correctly by running **ePSA diagnostics**.

Removing and Installing Components

This section provides detailed information on how to remove or install the components from your computer.

Recommended Tools

The procedures in this document may require the following tools:

- Small flat-blade screwdriver
- Phillips screwdriver
- Small plastic scribe

System Overview

The figure below displays the inside view of the back of the computer after the base cover has been removed. The call outs show the names and the layout of the components inside the computer.

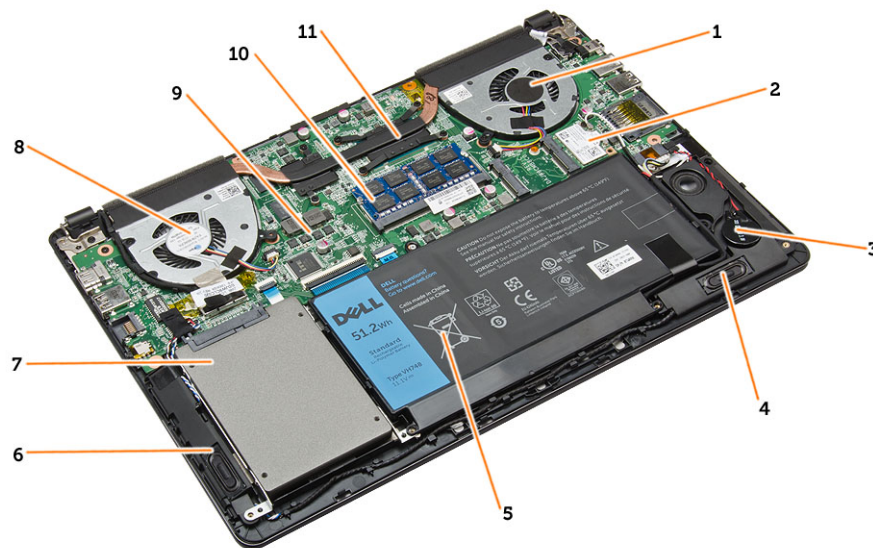


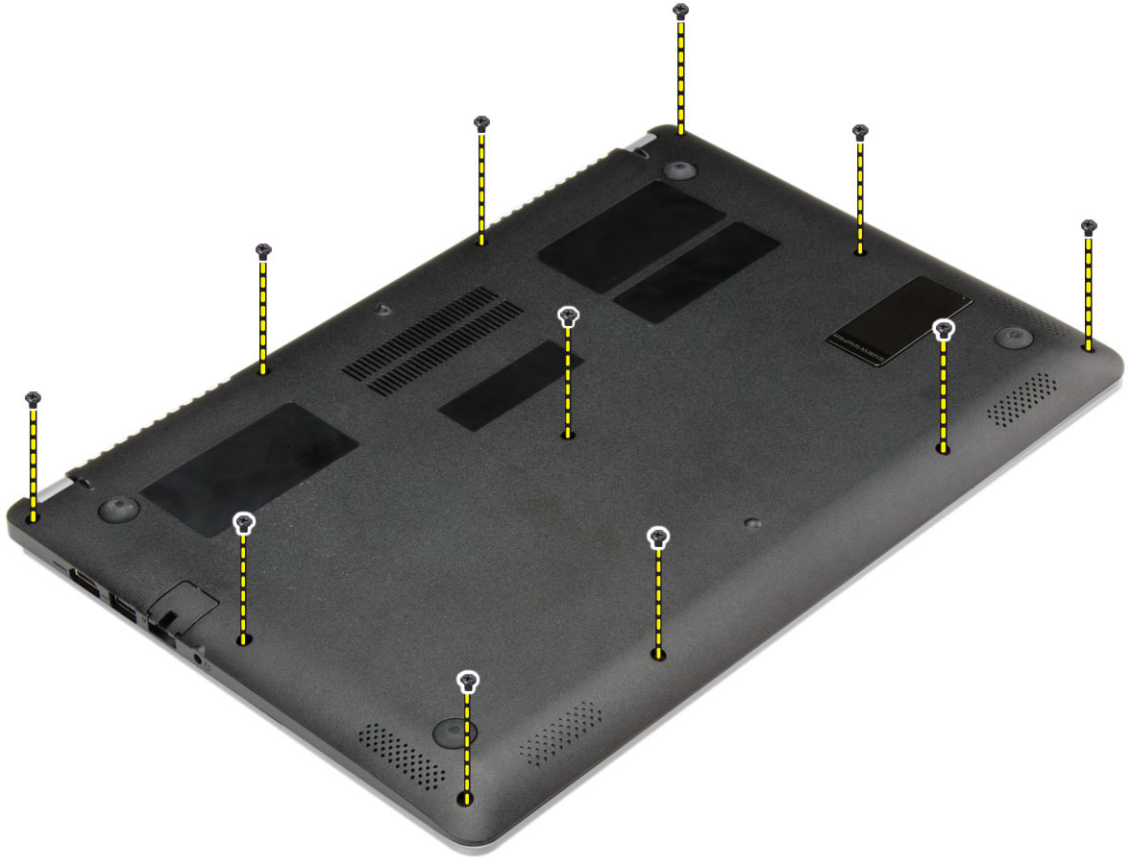
Figure 1. Inside view — back

1. system fan
2. WLAN card
3. coin-cell battery
4. speaker
5. battery
6. speaker
7. hard drive
8. system fan
9. system board

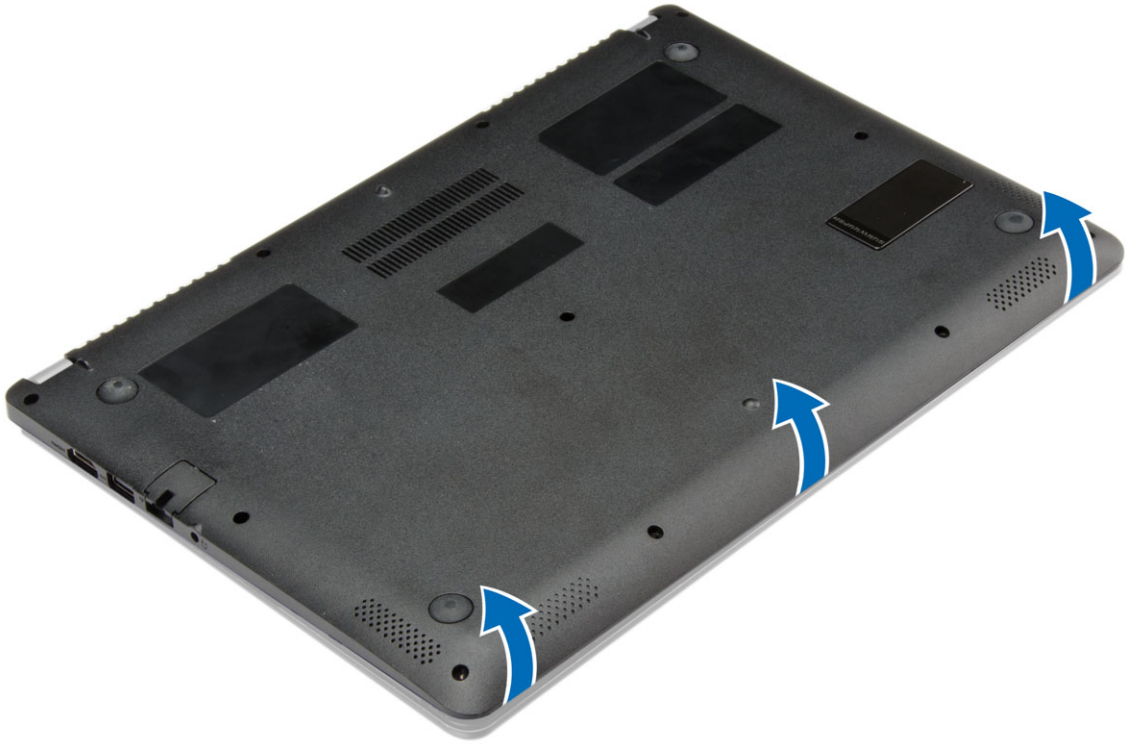
10. memory module
11. heatsink

Removing the Base Cover

1. Follow the procedures in [Before Working Inside Your Computer.](#)
2. Remove the screws that secure the base cover to the computer.



3. Pry the base cover along the edges to loosen it.



4. Lift and remove the base cover from the computer.

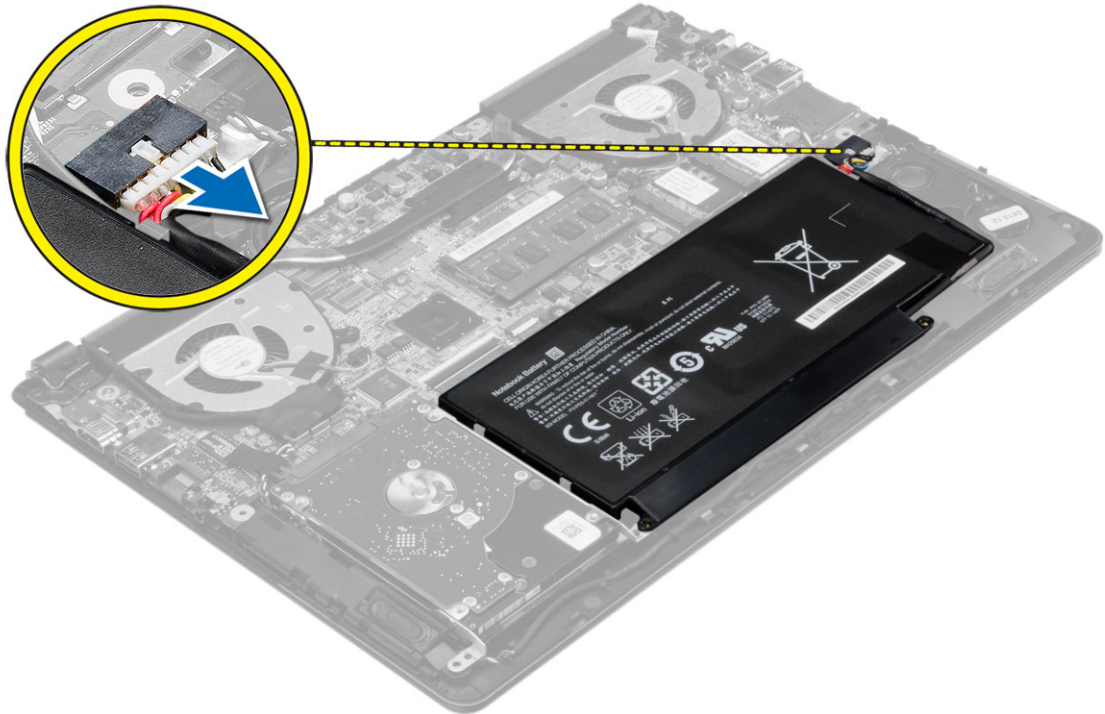


Installing the Base Cover

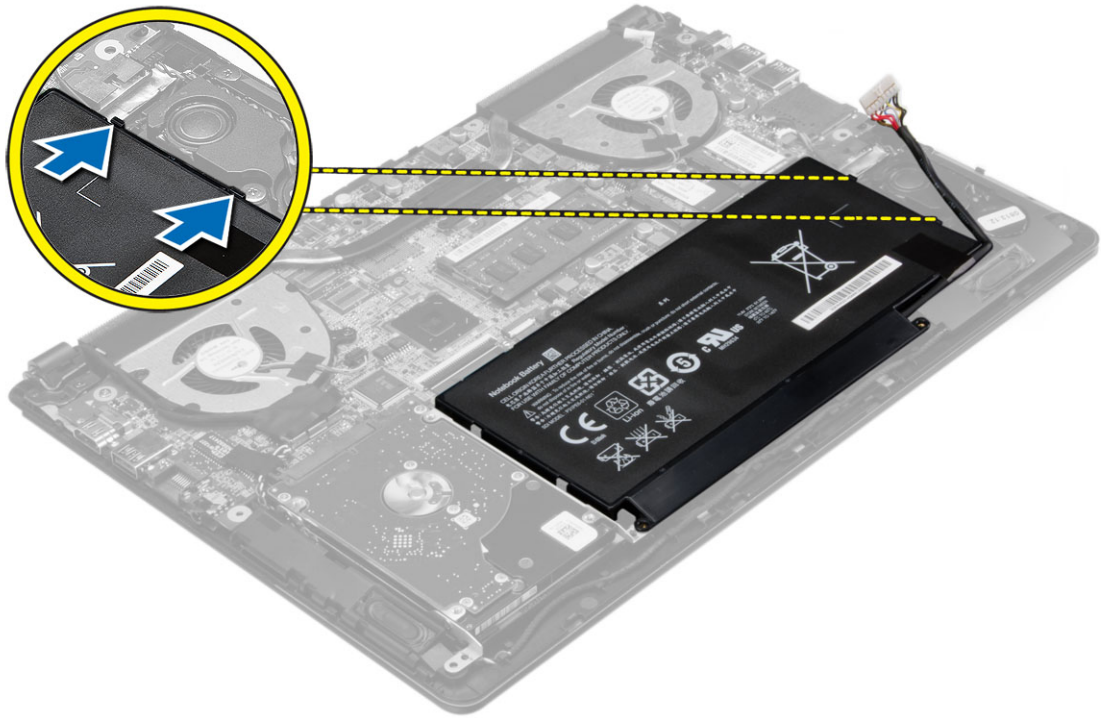
1. Place the base cover to align with the screw holes on the computer.
2. Tighten the screws to secure the base cover to the computer.
3. Follow the procedures in [After Working Inside Your Computer](#).

Removing the Battery

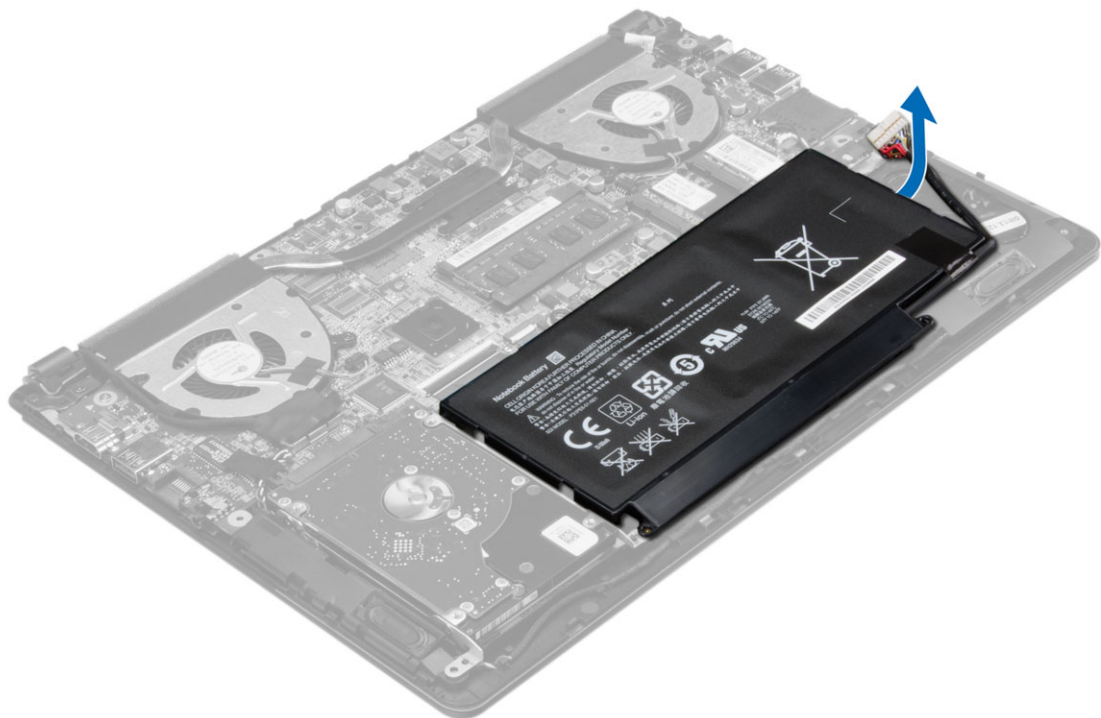
1. Follow the procedures in [Before Working Inside Your Computer](#).
2. Remove the [base cover](#).
3. Disconnect the battery cable from its connector on the system board.



4. Release the tabs that secure the battery in the battery bay.



5. Lift and remove the battery from the computer.



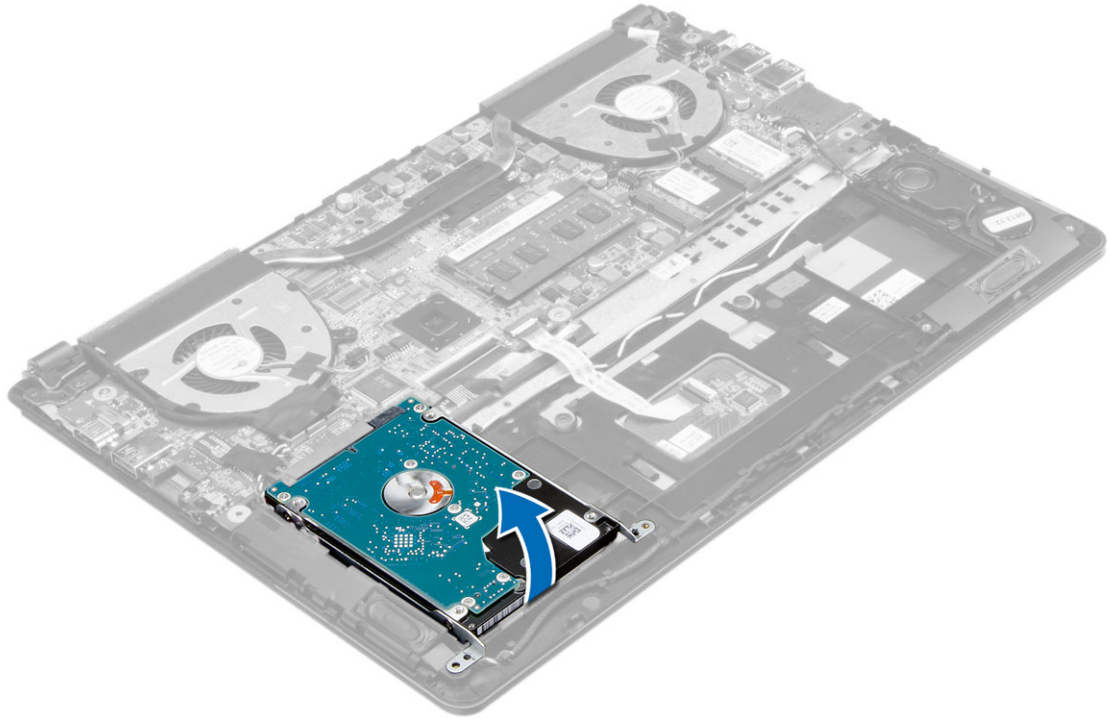
Installing the Battery

1. Place the battery into its slot until it clicks into place.
2. Connect the battery cable to its connector on the system board.
3. Install the base cover.

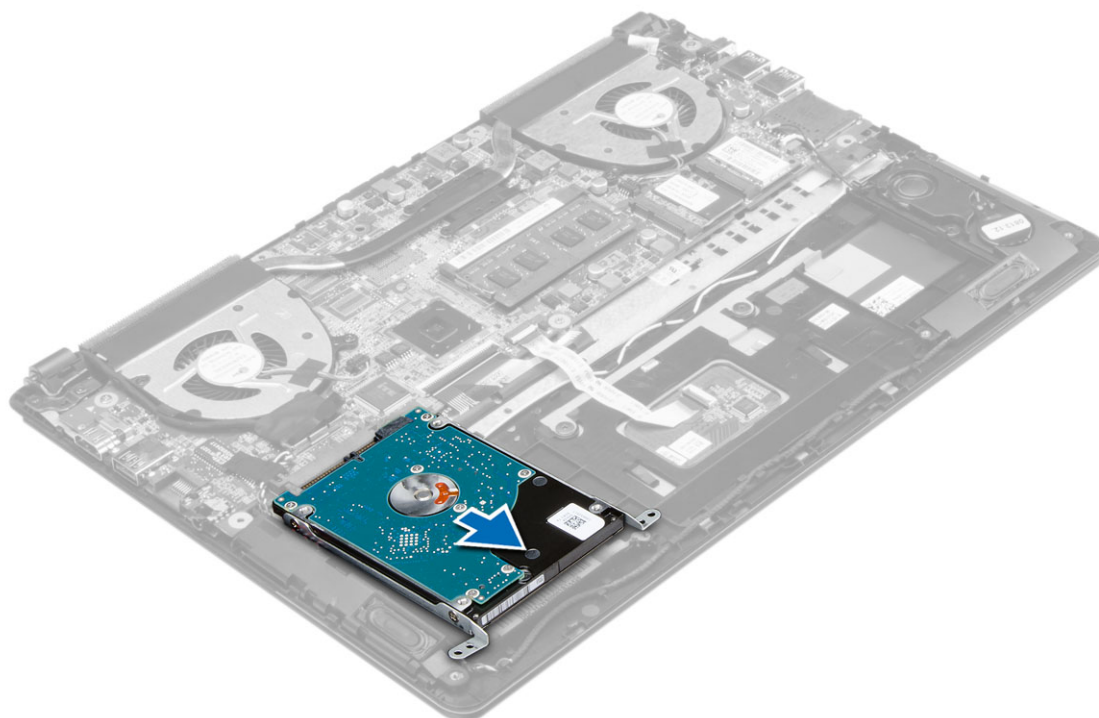
4. Follow the procedures in [After Working Inside Your Computer](#)

Removing the Hard Drive

1. Follow the procedures in [Before Working Inside Your Computer](#).
2. Remove:
 - a. [base cover](#)
 - b. [battery](#)
3. Lift the hard drive assembly in an upward direction to release it from its compartment on the computer.



4. Lift and remove the hard drive from the computer..



Installing the Hard Drive

1. Place the hard drive assembly into its slot on the computer.
2. Install:
 - a. [battery](#)
 - b. [base cover](#)
3. Follow the procedures in [After Working Inside Your Computer](#)

Removing the Coin-Cell Battery

1. Follow the procedures in [Before Working Inside Your Computer](#).
2. Remove:
 - a. [base cover](#)
 - b. [battery](#)
3. Perform the steps as shown in the illustration:
 - a. Disconnect the coin-cell battery cable from its connector on the system board.
 - b. Unroute the coin-cell battery cable from the routing channel.
 - c. Lift and remove the coin-cell from the computer.

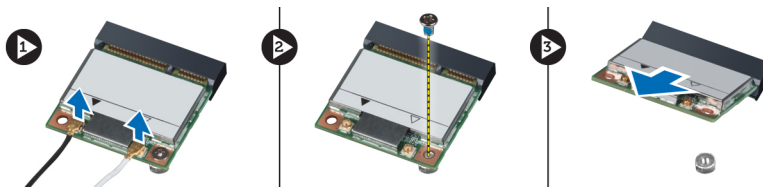


Installing the Coin-Cell Battery

1. Place the coin-cell battery into its slot on the computer.
2. Route the coin-cell battery cable along the routing channel.
3. Connect the coin-cell battery cable to its connector on the system board.
4. Install:
 - a. [battery](#)
 - b. [base cover](#)
5. Follow the procedures in [After Working Inside Your Computer](#)

Removing the WLAN Card

1. Follow the procedures in [Before Working Inside Your Computer](#).
2. Remove:
 - a. [base cover](#)
 - b. [battery](#)
3. Perform the steps as shown in the illustration:
 - a. Disconnect the antenna cable from the WLAN card.
 - b. Remove the screw that secures the WLAN card to the computer.
 - c. Remove the WLAN card from its slot on the system board.

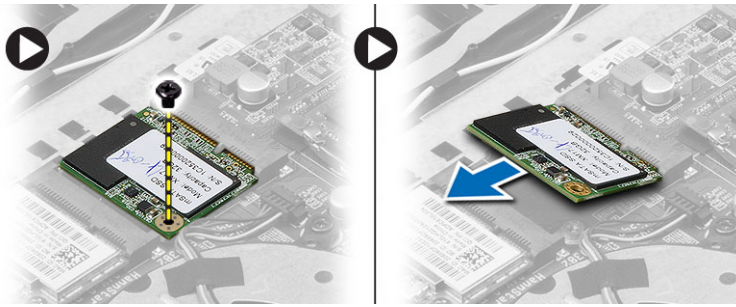


Installing the WLAN Card

1. Insert the WLAN card into its connector at a 45-degree angle.
2. Tighten the screw to secure the WLAN card to the computer.
3. Connect the antenna cables to their respective connectors marked on the WLAN card.
4. Install:
 - a. [battery](#)
 - b. [base cover](#)
5. Follow the procedures in [After Working Inside Your Computer](#)

Removing the mSATA SSD Card

1. Follow the procedures in [Before Working Inside Your Computer](#).
2. Remove:
 - a. [base cover](#)
 - b. [battery](#)
3. Remove the screw that secures the mSATA SSD card to the computer.
4. Remove the mSATA SSD card from its slot on the system board.

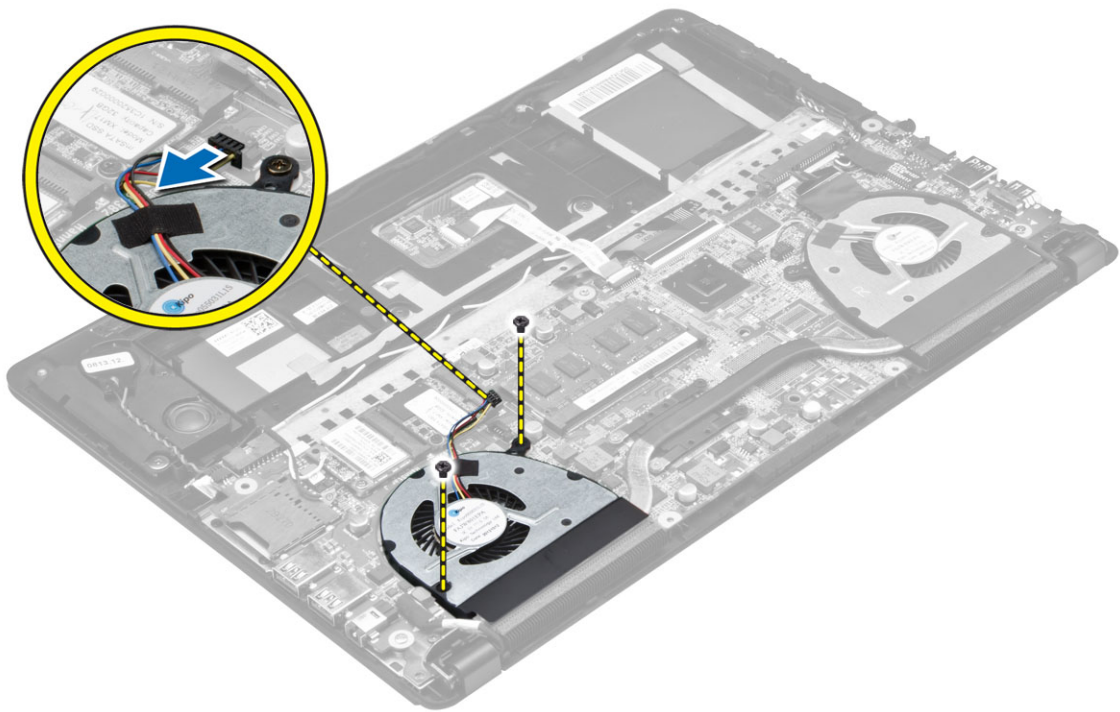


Installing the mSATA SSD Card

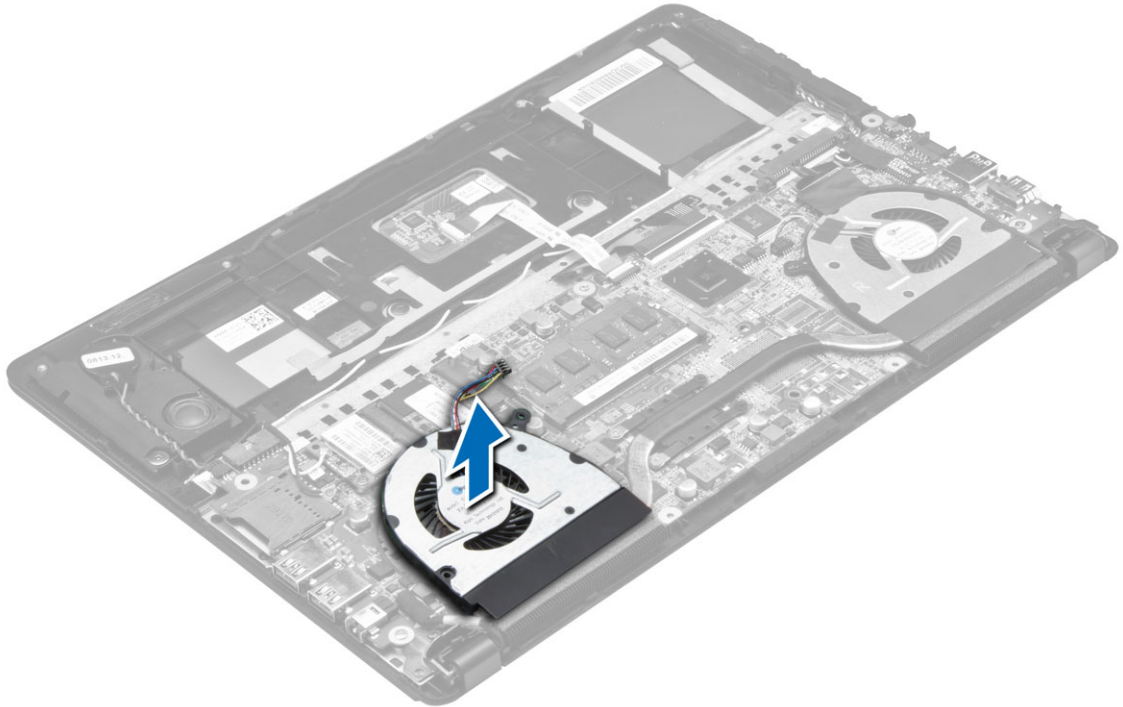
1. Insert the mSATA SSDcard into its connector at a 45-degree angle.
2. Tighten the screw to secure the mSATA SSD card to the computer.
3. Install:
 - a. [battery](#)
 - b. [base cover](#)
4. Follow the procedures in [After Working Inside Your Computer](#)

Removing the System Fan

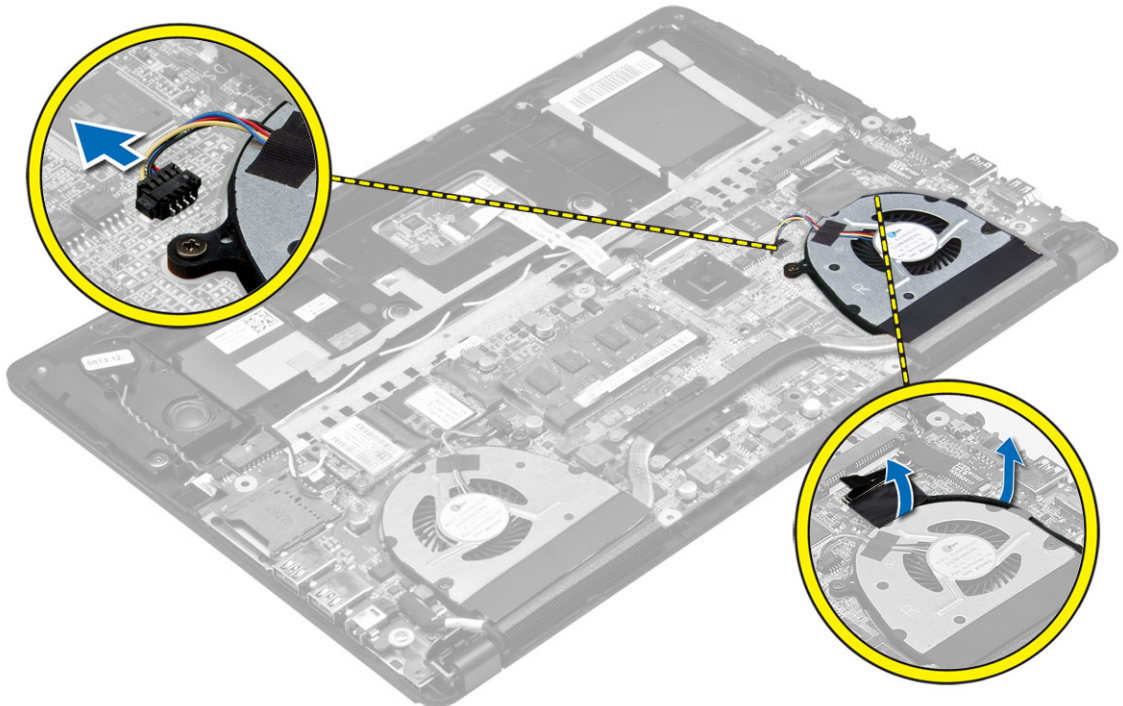
1. Follow the procedures in [Before Working Inside Your Computer](#).
2. Remove:
 - a. [base cover](#)
 - b. [battery](#)
3. Perform the steps as shown in the illustration:
 - a. Disconnect the left system fan cable from its connector on the system board.
 - b. Remove the screws that secure the left system fan to the system board.



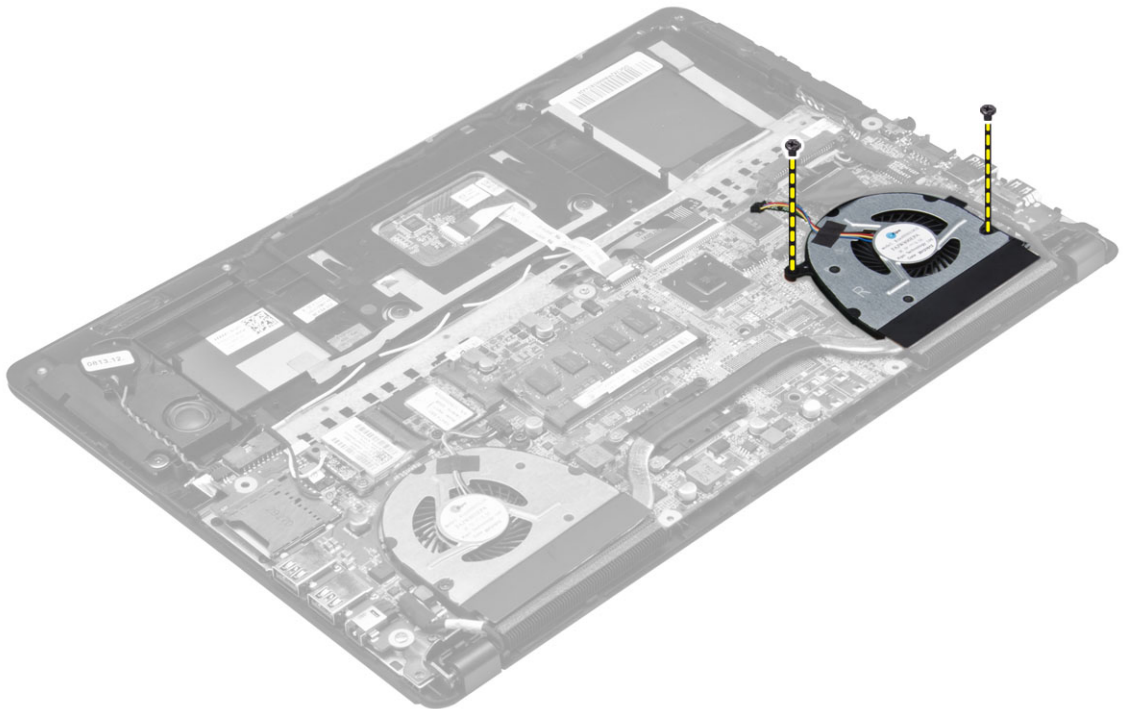
4. Lift and remove the left system fan from the computer.



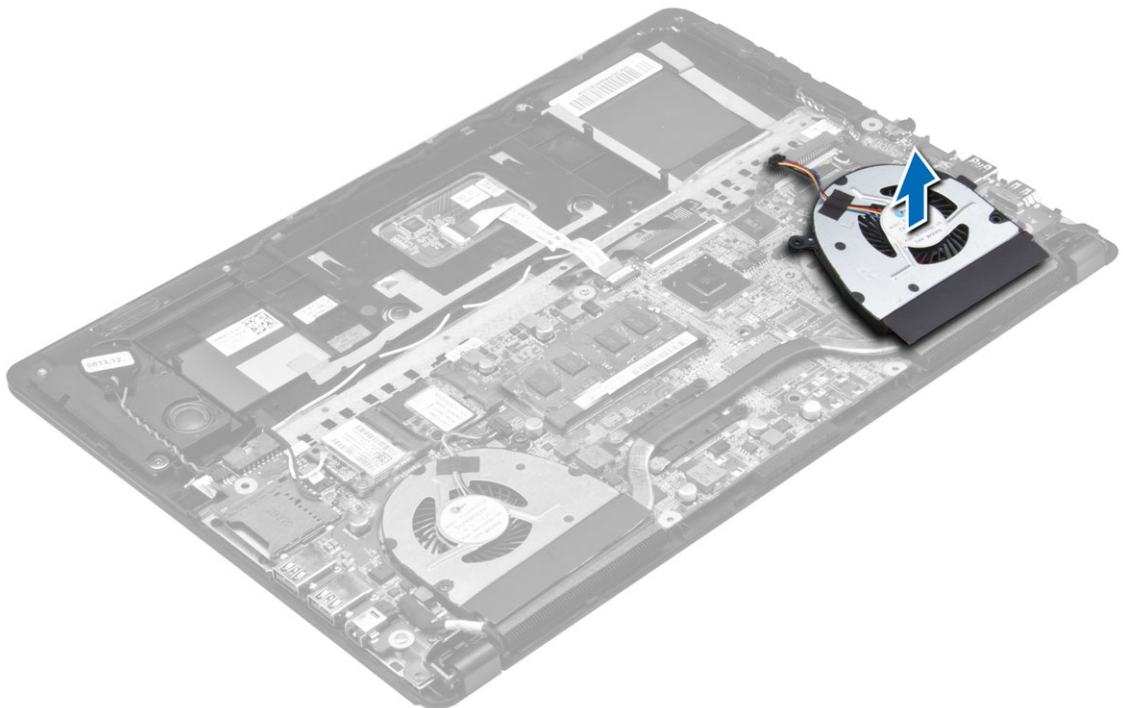
5. Disconnect the right system fan cable from its connector on the system board. Peel away the system board flex cable from the right system fan.



6. Remove the screws that secure the right system fan to the system board.



7. Lift and remove the right system fan from the computer.



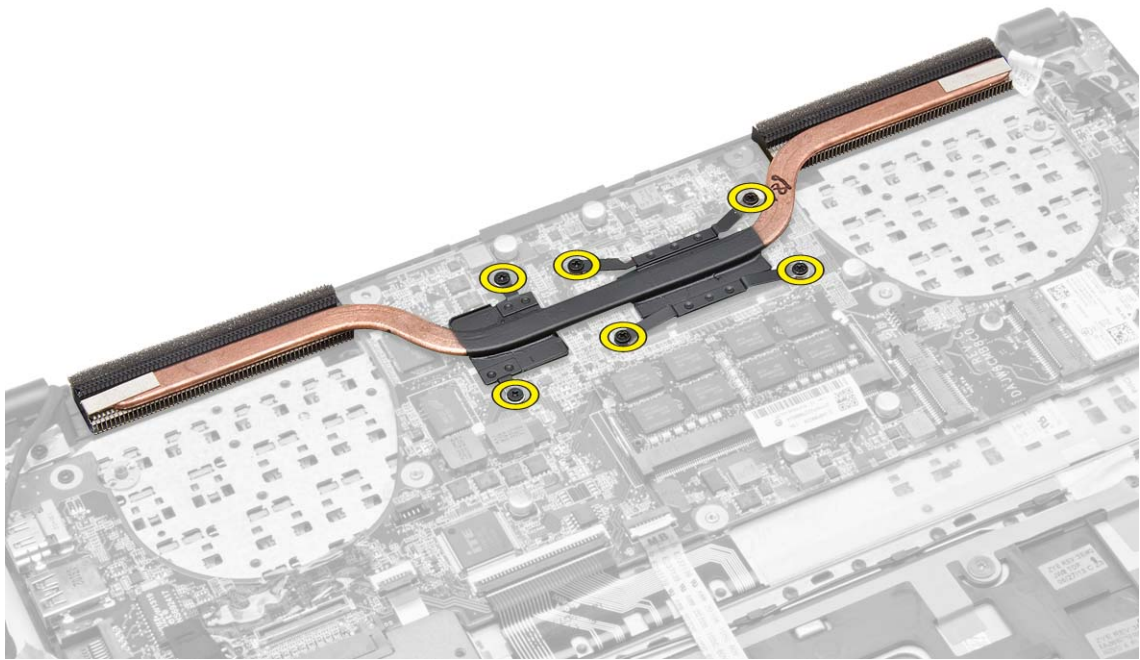
Installing the System Fan

1. Place the right system fan into its original position in the system board and affix the system board flex cable.
2. Tighten the screws that secure the right system fan to the system board.
3. Connect the right system fan cable to its connector on the system board.

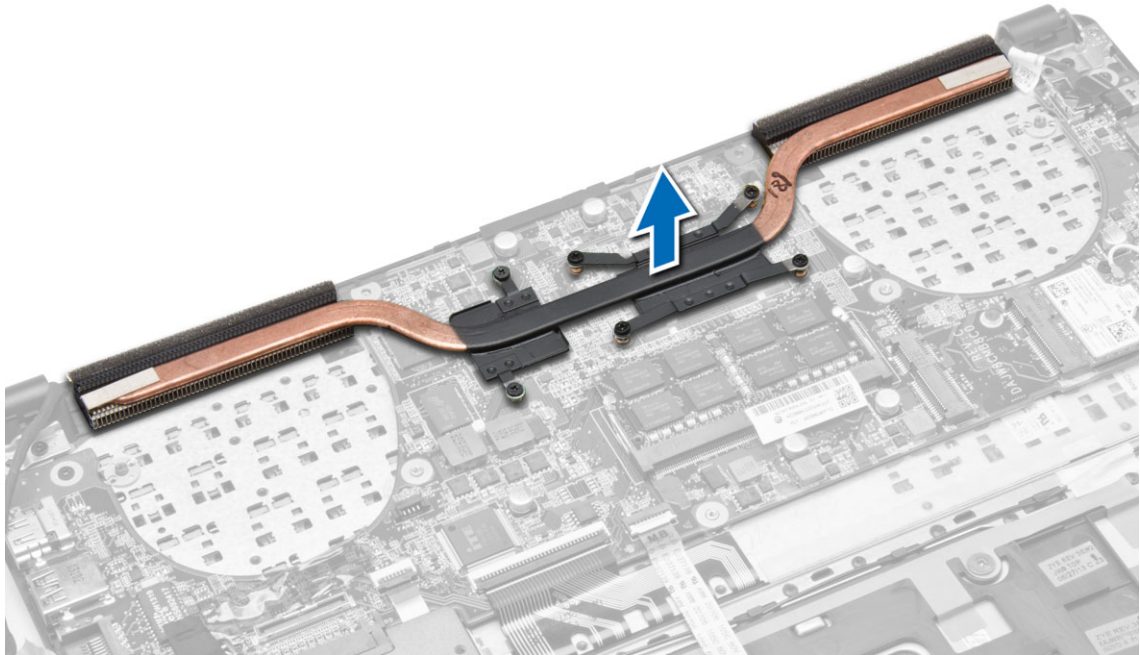
4. Place the left system fan into its original position in the system board.
5. Tighten the screws that secure the left system fan to the system board.
6. Connect the left system fan cable to its connector on the system board.
7. Install :
 - a. [battery](#)
 - b. [base cover](#)
8. Follow the procedures in [After Working Inside Your Computer](#)

Removing the Heatsink

1. Follow the procedures in [Before Working Inside Your Computer](#).
2. Remove:
 - a. [base cover](#)
 - b. [battery](#)
 - c. [system fan](#)
3. Remove the screws that secure the heatsink to the system board.



4. Lift the heatsink, and remove from the computer.

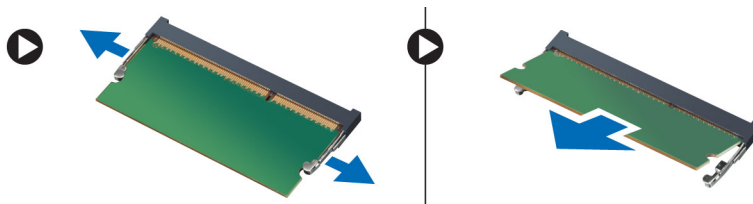


Installing the Heatsink

1. Place the heatsink into its original position on the system board.
2. Tighten the screws to secure the heatsink to the system board.
3. Install:
 - a. [system fan](#)
 - b. [battery](#)
 - c. [base cover](#)
4. Follow the procedures in [After Working Inside Your Computer](#)

Removing the Memory

1. Follow the procedures in [Before Working Inside Your Computer](#).
2. Remove:
 - a. [base cover](#)
 - b. [battery](#)
3. Pry the securing clips away from the memory module until it pops up. Remove the memory module from its connector on the system board.

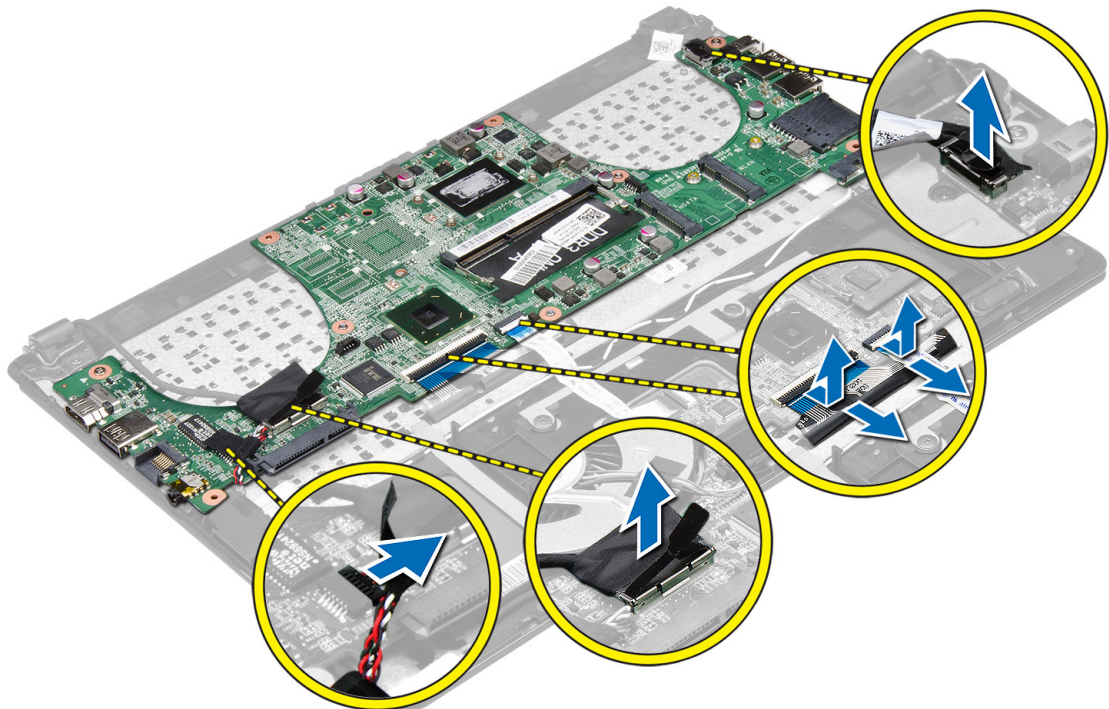


Installing the Memory

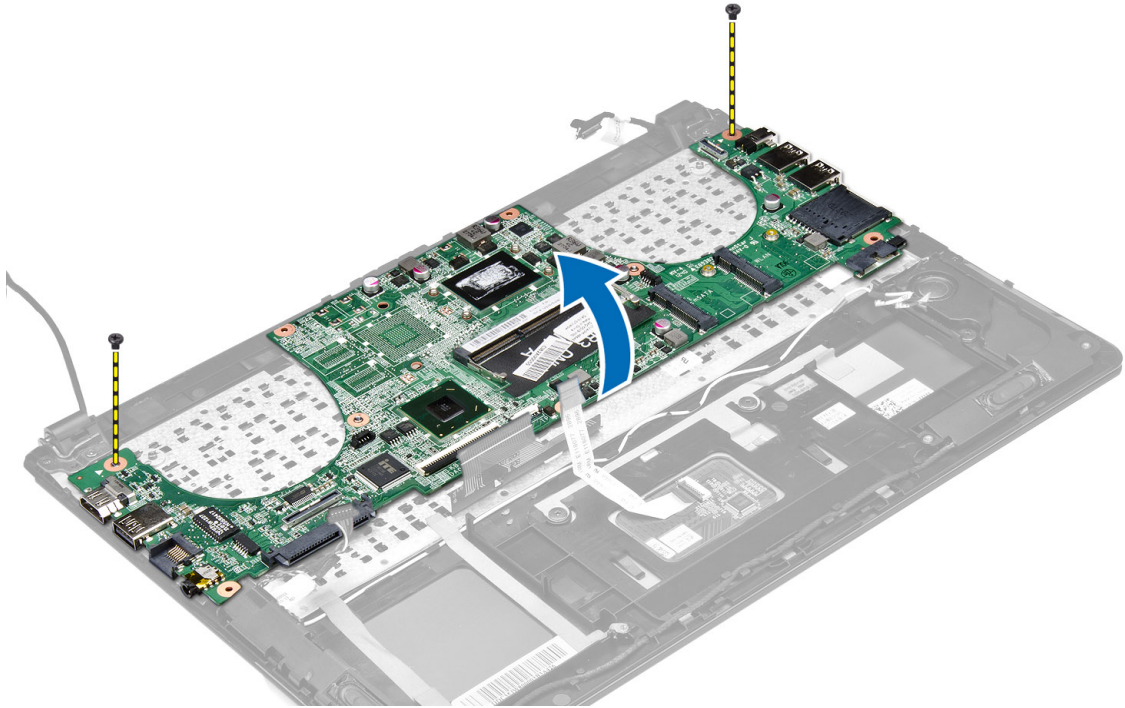
1. Insert the memory module into the memory socket.
2. Press the memory module down until it clicks into place.
3. Install:
 - a. [battery](#)
 - b. [base cover](#)
4. Follow the procedures in [After Working Inside Your Computer](#).

Removing the System Board

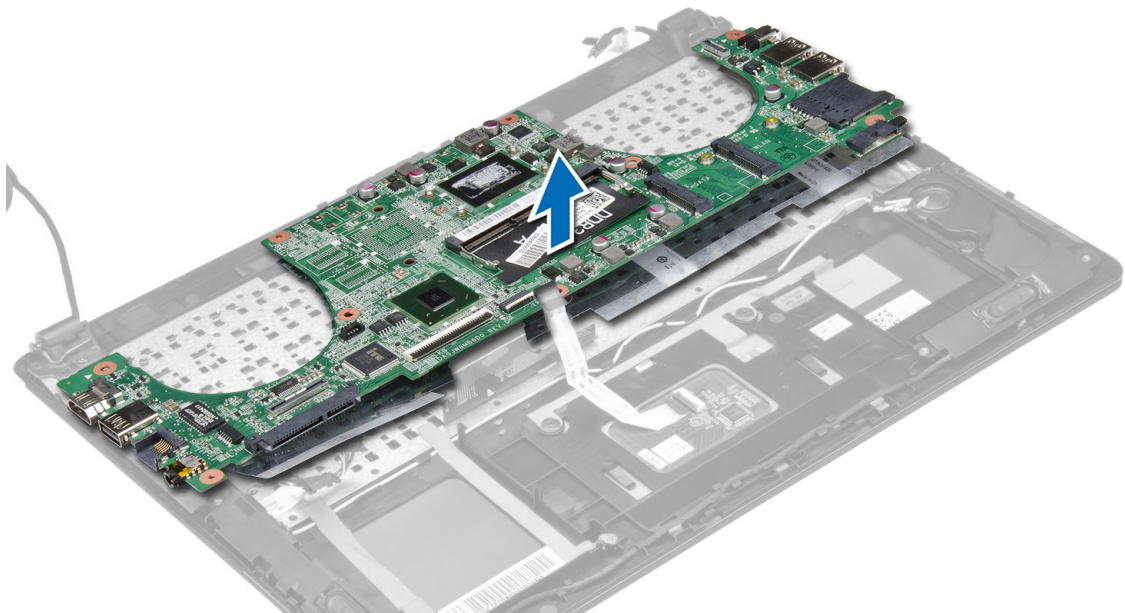
1. Follow the procedures in [Before Working Inside Your Computer](#).
2. Remove:
 - a. [base cover](#)
 - b. [battery](#)
 - c. [hard drive](#)
 - d. [system fan](#)
 - e. [heatsink](#)
3. Disconnect the following cables:
 - a. speaker
 - b. display
 - c. keyboard
 - d. touchpad
 - e. camera
 - f. coin-cell battery
 - g. WLAN
 - h. Finger printer



4. Remove the screws that secure the system board to the chassis.



5. Remove the system board from the computer.



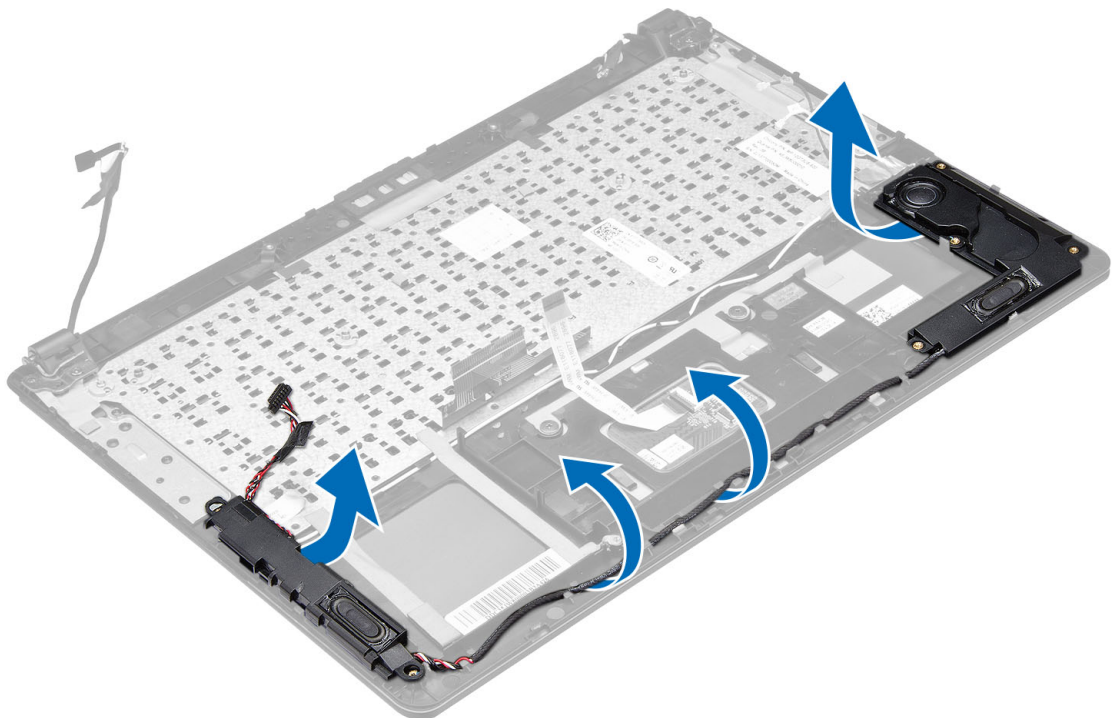
Installing the System Board

1. Place the system board into its original position on the chassis.
2. Tighten the screws to secure the system board to the chassis.

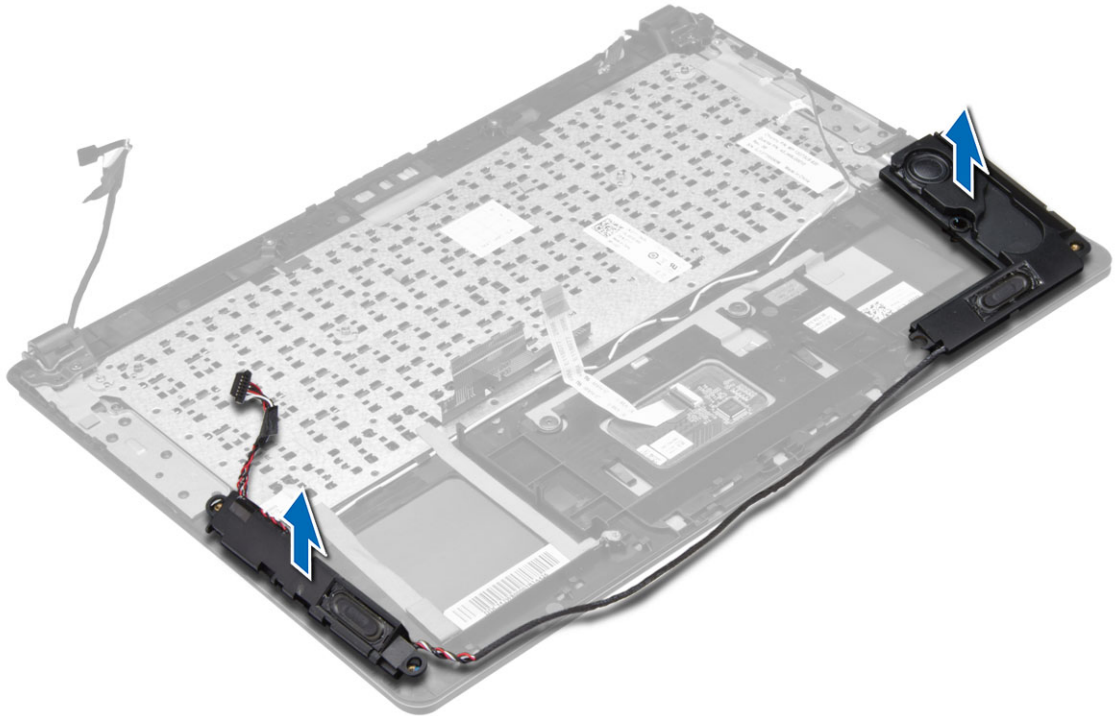
3. Connect the following cable:
 - a. finger printer
 - b. WLAN
 - c. coin-cell battery
 - d. camera
 - e. touchpad
 - f. keyboard
 - g. display
 - h. speaker
4. Install:
 - a. [heatsink](#)
 - b. [system fan](#)
 - c. [hard drive](#)
 - d. [battery](#)
 - e. [base cover](#)
5. Follow the procedures in [After Working Inside Your Computer](#)

Removing the Speakers

1. Follow the procedures in [Before Working Inside Your Computer](#).
2. Remove:
 - a. [base cover](#)
 - b. [battery](#)
 - c. [hard drive](#)
 - d. [WLAN card](#)
 - e. [mSATA SSD card](#)
 - f. [coin-cell battery](#)
 - g. [system fan](#)
 - h. [heatsink](#)
 - i. [system board](#)
3. Un-route the speaker cable from the routing channel.



4. Lift the speaker assembly along with the routing cable and remove the speakers from the computer.

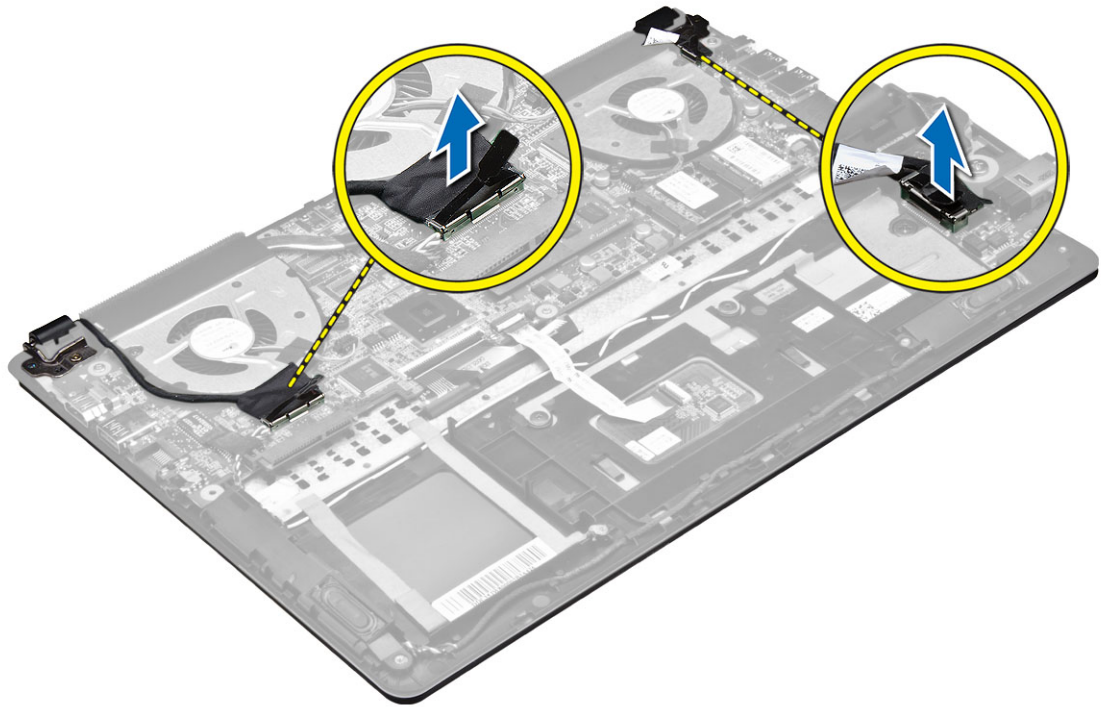


Installing the Speakers

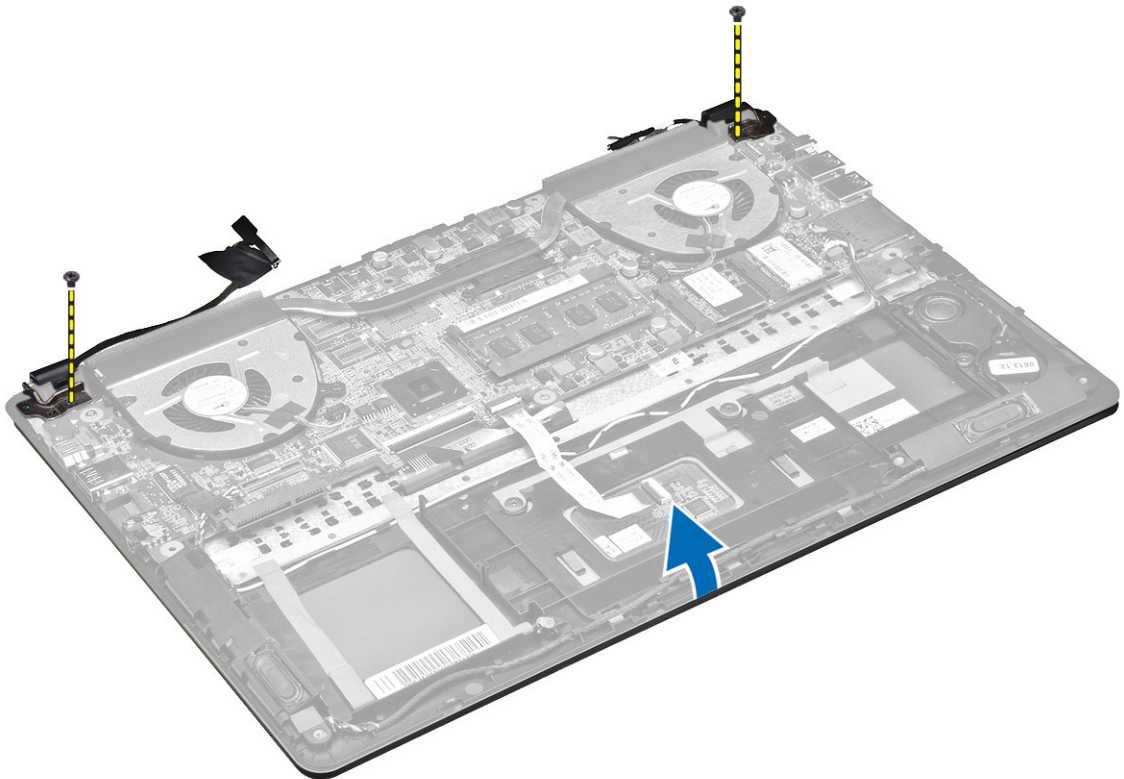
1. Place the speakers into its original position on the computer.
2. Route the speaker cable along the routing channel.
3. Connect the speaker connector to its slot on the system board.
4. Install:
 - a. [system board](#)
 - b. [heatsink](#)
 - c. [system fan](#)
 - d. [coin-cell battery](#)
 - e. [mSATA SSD card](#)
 - f. [WLAN card](#)
 - g. [hard drive](#)
 - h. [battery](#)
 - i. [base cover](#)
5. Follow the procedures in [After Working Inside Your Computer](#)

Removing the Display Assembly

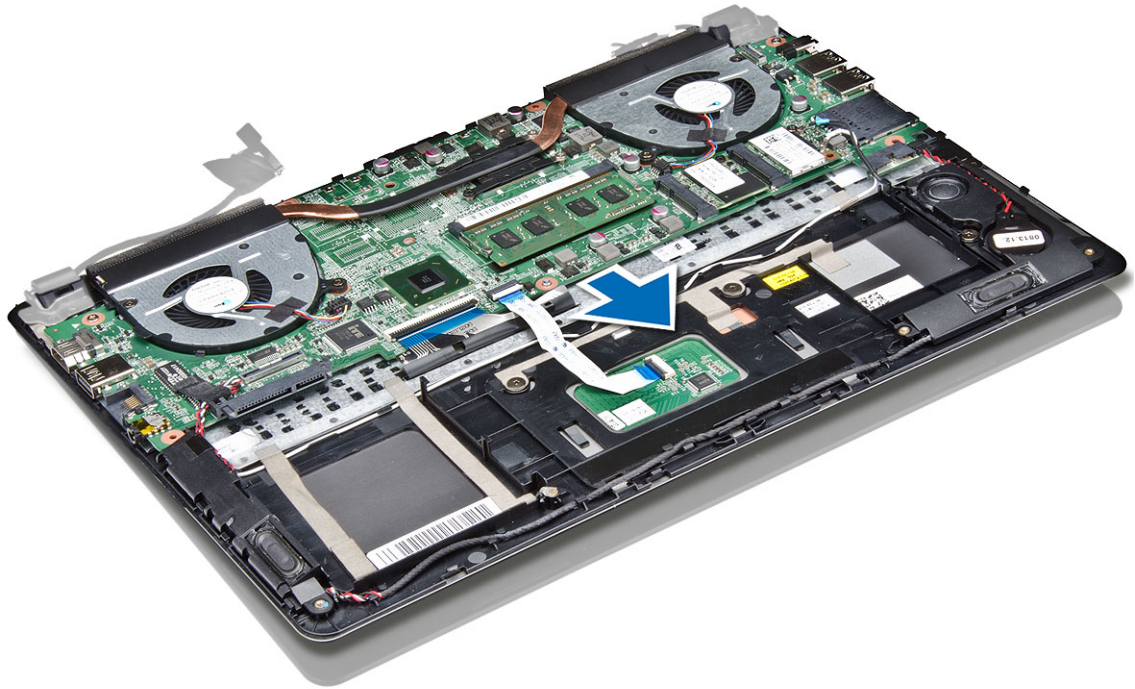
1. Follow the procedures in [Before Working Inside Your Computer](#).
2. Remove :
 - a. [base cover](#)
 - b. [battery](#)
3. Disconnect the LVDS cable and the camera cable from its connectors on the system board.



4. Remove the screws that secure the display hinges to the system board. Lift and move the system base panel away from the display hinges to facilitate easy removal of the display assembly.



5. Remove the system base panel.

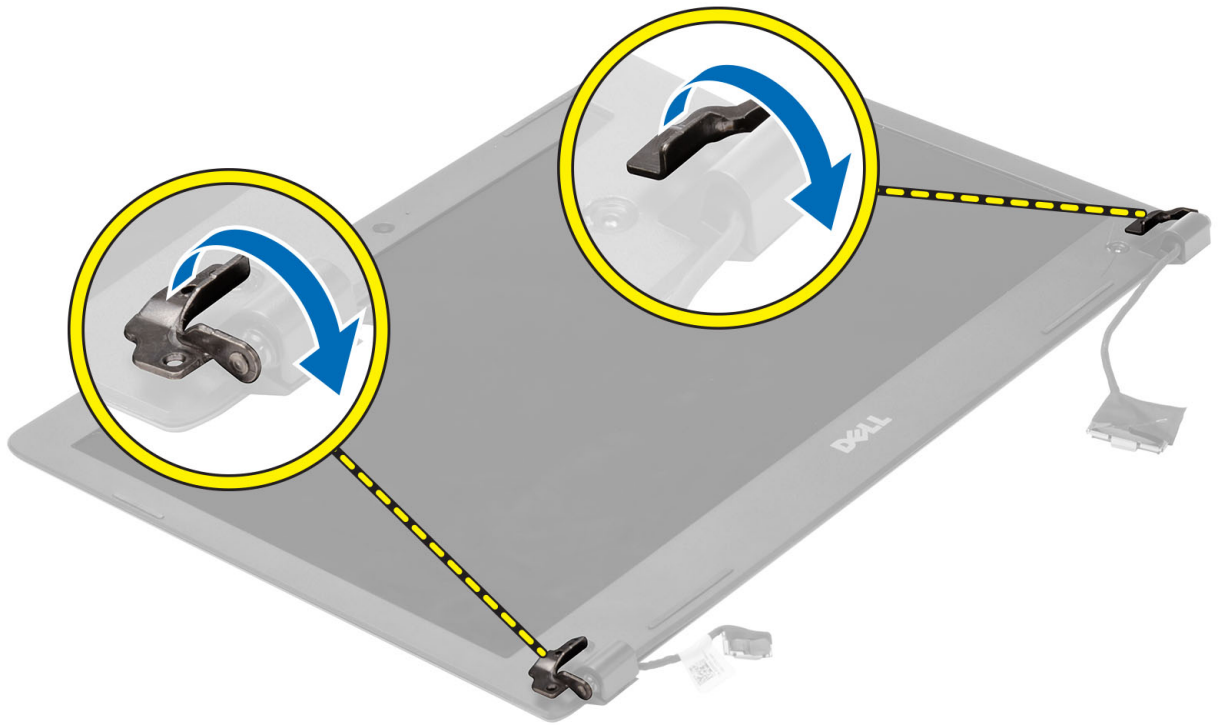


Installing the Display Assembly

1. Align the base panel of the computer to the display hinges.
2. Install the screws that secure the display hinges to the system board.
3. Connect the LVDS cable and the camera cable to the connectors on the system board.
4. Install :
 - a. [battery](#)
 - b. [base cover](#)
5. Follow the procedures in [After Working Inside Your Computer](#)

Removing the Display Bezel

1. Follow the procedures in [Before Working Inside Your Computer](#).
2. Remove :
 - a. [base cover](#)
 - b. [battery](#)
 - c. [display assembly](#)
3. Rotate the hinge brackets as the angle shown to facilitate easy removal of the display bezel.



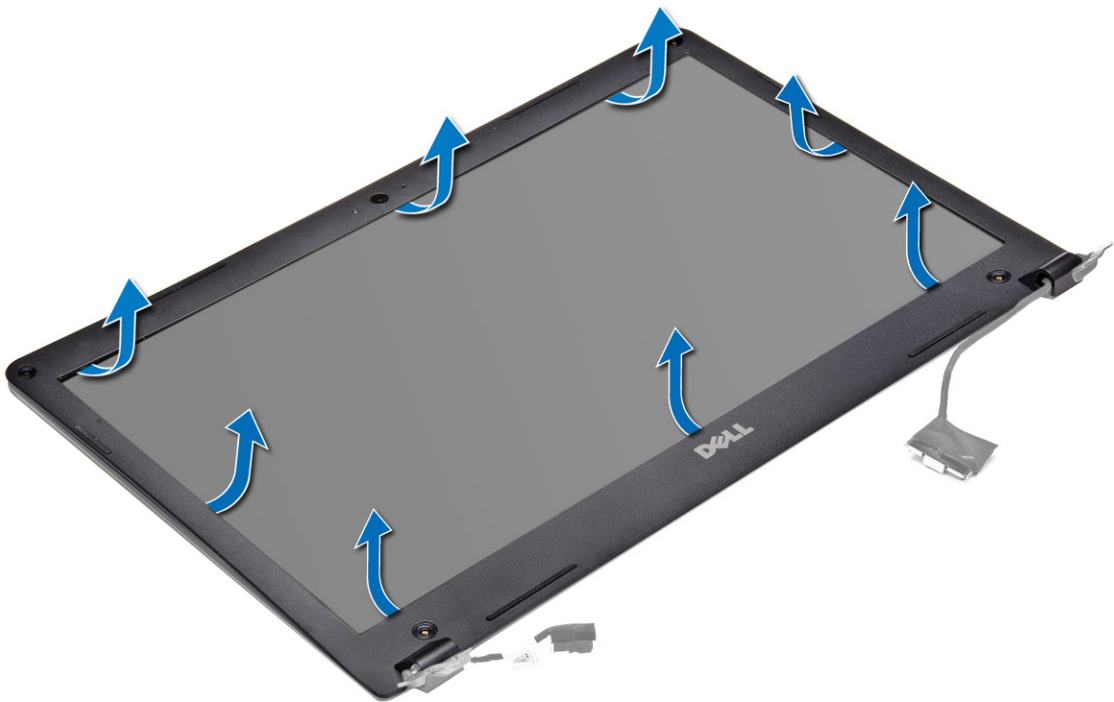
4. Pry on the plastic caps that cover the display bezel screws and remove them.



5. Remove the screws that secure the bezel to the display bezel.



6. Pry along the inner edges of the display bezel and remove the display bezel.



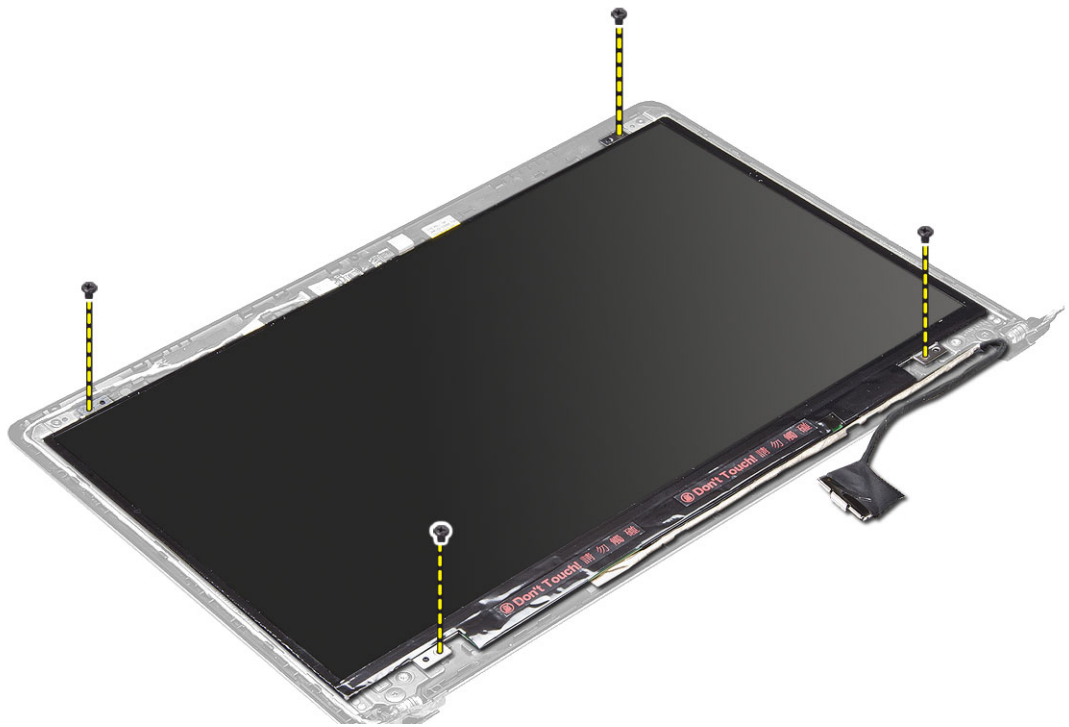
Installing the Display Bezel

1. Align the display bezel by pressing along the edges.
2. Install the screws that secure the display bezel.
3. Install the plastic caps that secure the display bezel screws on both sides of the display.

4. Install :
 - a. [battery](#)
 - b. [base cover](#)
 - c. [display assembly](#)
5. Follow the procedures in [After Working Inside Your Computer](#)

Removing the Display Panel

1. Follow the procedures in [Before Working Inside Your Computer](#).
2. Remove:
 - a. [base cover](#)
 - b. [battery](#)
 - c. [display assembly](#)
 - d. [display bezel](#)
3. Remove the screws that secure the display panel to the display assembly.



4. Lift and remove the display from the display assembly.

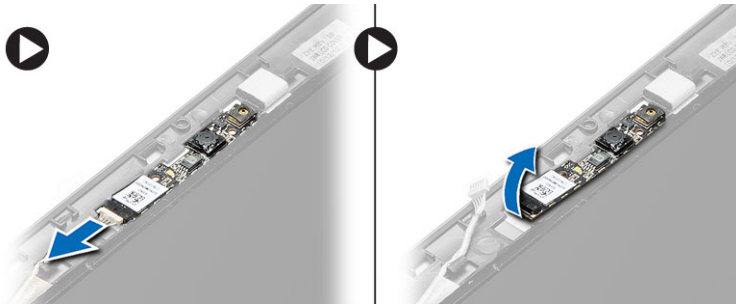


Installing the Display Panel

1. Align the display panel to the display assembly by pressing along the edges.
2. Install the screws that secure the display.
3. Install:
 - a. [battery](#)
 - b. [base cover](#)
 - c. [display assembly](#)
 - d. [display bezel](#)
4. Follow the procedures in [After Working Inside Your Computer](#)

Removing the Camera

1. Follow the procedures in [Before Working Inside Your Computer](#).
2. Remove :
 - a. [base cover](#)
 - b. [battery](#)
 - c. [display assembly](#)
 - d. [display bezel](#)
 - e. [display](#)
3. Disconnect the camera cable and lift the camera to remove it from the computer.



Installing the Camera

1. Align the camera to the base panel .
2. Connect the camera cable to the camera.
3. Install :
 - a. [battery](#)
 - b. [base cover](#)
 - c. [display assembly](#)
 - d. [display bezel](#)
 - e. [display](#)
4. Follow the procedures in [After Working Inside Your Computer](#)

System Setup

System Setup Overview

System Setup allows you to:

- Change the system configuration information after you add, change, or remove any hardware in your computer.
- Set or change a user-selectable option such as the user password.
- Read the current amount of memory or set the type of hard drive installed.
- Check battery health.

Before you use System Setup, it is recommended that you write down the System Setup screen information for future reference.



CAUTION: Unless you are an expert computer user, do not change the settings for this program. Certain changes can cause your computer to work incorrectly.

Boot Sequence

Boot Sequence allows you to bypass the System Setup-defined boot device order and boot directly to a specific device (for example: optical drive or hard drive). During the Power-on Self Test (POST), when the Dell logo appears, you can:

- Access System Setup by pressing <F2> key
- Bring up the one-time boot menu by pressing <F12> key

The one-time boot menu displays the devices that you can boot from including the diagnostic option. The boot-menu options are:

- Removable Drive (if available)
- STXXXX Drive

 **NOTE:** XXX denotes the SATA drive number.

- Optical Drive
- Diagnostics

 **NOTE:** Choosing Diagnostics, will display the ePSA diagnostics screen.

The boot sequence screen also displays the option to access the System Setup screen.

Navigation keys




NOTE: For most of the System Setup options, changes that you make are recorded but do not take effect until you restart the system.

Keys

Up arrow



Navigation

Moves to the previous field.

Keys	Navigation
Down arrow	Moves to the next field.
Enter	Selects a value in the selected field (if applicable) or follow the link in the field.
Spacebar	Expands or collapses a drop-down list, if applicable.
Tab	Moves to the next focus area.
	 NOTE: For the standard graphics browser only.
Esc	Moves to the previous page until you view the main screen. Pressing Esc in the main screen displays a message that prompts you to save any unsaved changes and restarts the system.

Updating the BIOS

It is recommended to update your BIOS (system setup), on replacing the system board or if an update is available. For laptops, ensure that your computer battery is fully charged and connected to a power outlet

1. Restart the computer.
2. Go to dell.com/support.
3. If you have your computer's Service Tag or Express Service Code:
 -  **NOTE: To locate the Service Tag, click Where is my Service Tag?**
 -  **NOTE: If you cannot find your Service Tag, click Detect Service Tag. Proceed with the instructions on screen.**
4. Enter the **Service Tag** or **Express Service Code** and click **Submit**.
5. If you are unable to locate or find the Service Tag, click the Product Category of your computer.
6. Choose the **Product Type** from the list.
7. Select your computer model and the **Product Support** page of your computer appears.
8. Click **Drivers & Downloads**.
9. On the Drivers and Downloads screen, under the **Operating System** drop-down list, select **BIOS**.
10. Identify the latest BIOS file and click **Download File**.
11. Select your preferred download method in the **Please select your download method below window**; click **Download File**.
The **File Download** window appears.
12. Click **Save** to save the file on your computer.
13. Click **Run** to install the updated BIOS settings on your computer.
Follow the instructions on the screen.

System Setup Options

Table 1. Main

System Time	Resets the time on the computer internal clock.
System Date	Resets the date on the computer internal calendar.
BIOS Version	Displays the BIOS revision.
Product Name	Displays the product name and the model number.
Service tag	Displays the service tag of your computer.
Asset Tag	Displays the asset tag of your computer (if available).
CPU Type	Displays the type of processor.

CPU Speed	Displays the speed of the processor.
CPU ID	Displays the processor ID.
L1 Cache	Displays the processor L1 cache size.
L2 Cache	Displays the processor L2 cache size.
L3 Cache	Displays the processor L3 cache size.
Fixed hard drive	Displays the model number and capacity of the hard drive.
mSATA device	Displays the model number and capacity of the optical drive.
System memory	Displays the memory in-built on the computer.
Extended Memory	Displays the memory that is installed on the computer.
Memory Speed	Displays the memory speed.

Table 2. Advanced

Intel SpeedStep	Enable or disable the Intel SpeedStep feature.	Default: Enabled
Virtualization	Enable or disable the Intel Virtualization feature.	Default: Enabled
Integrated NIC	Enable or disable the power supply to the on-board network card.	Default: Enabled
USB Emulation	Enable or disable the USB emulation feature.	Default: Enabled
USB PowerShare	Enable or disable the USB PowerShare feature.	Default: Enabled
SATA Operation	Change the SATA controller mode to either ATA or AHCI.	Default: AHCI
Adapter Warnings	Enable or disable the adapter Warnings.	Default: Enable
Function key Behavior	Specifies the behavior of the function key <Fn>.	Default: Function key
Intel SmartConnect Technology	Enable or disable Intel SmartConnect Technology.	Default: Enable
Intel Rapid start Technology	Enable or disable Inter Rapid start Technology.	Default: Enable
Miscellaneous devices	These fields let you enable or disable various onboard devices.	
Battery Health	Displays a message about the battery health.	

Table 3. Security

Set Asset Tag	This field displays your system asset tag. If the asset tag is not already set, this field can be used to enter it.
Set Admin Password	Enables you to change or delete the administrator password.
Set System Password	Enables you to change or delete the system password.

Set hard drive Password	Enables you to set a password on the computer internal hard drive (hard drive).
Password Change	Enables you to change the security password.
Password Bypass	Enables you to bypass the system password and the internal hard drive password prompts during a system restart/resume from hibernate state.

Table 4. Boot

Boot Priority Order	Specifies the order of different devices in which the computer can boot through at start-up.
Windows boot Manager	Enables Windows to search for a hard drive with Windows files and boot from it.
Secure boot	Species if the UEFI secure boot option is enabled or disabled.
Add boot Option	Enables you to add more boot device.
Delete boot Option	Enables you to remove an existing boot device from the boot order.

Exit

This section enables you to save, discard, and load default settings before exiting from System Setup.

Troubleshooting

Enhanced Pre-Boot System Assessment — ePSA diagnostics

The ePSA diagnostics (also known as system diagnostics) performs a complete check of your hardware. The ePSA is embedded with the BIOS and is launched by the BIOS internally. The embedded system diagnostics provides a set of options for particular devices or device groups allowing you to:

- Run tests automatically or in an interactive mode
- Repeat tests
- Display or save test results
- Run thorough tests to introduce additional test options to provide extra information about the failed device(s)
- View status messages that inform you if tests are completed successfully
- View error messages that inform you of problems encountered during testing



CAUTION: Use the system diagnostics to test only your computer. Using this program with other computers may cause invalid results or error messages.



NOTE: Some tests for specific devices require user interaction. Always ensure that you are present at the computer terminal when the diagnostic tests are performed.

Battery status light

Table 5. Battery LED Behavior

Battery Charge LED		Off/Hibernate	Standby
AC mode	Full charge	Off	Off
	Charging	Solid White	Solid White
Battery mode	Discharging when Battery charge is > 10%	Off	Off
	Discharging when Battery charge is <=10%	Off	Blinking White

Device status lights

Table 6. Device status lights



Turns on when you turn on the computer and blinks when the computer is in a power management mode.



Turns on when the computer reads or writes data.



Turns on steadily or blinks to indicate battery charge status.



Beep Codes

The computer may emit a series of beeps during start-up if the display cannot show errors or problems. These series of beeps, called beep codes, identify various problems. The delay between each beep is 300 ms, the delay between each set of beeps is 3 seconds, and the beep sound lasts 300 ms. After each beep and each set of beeps, the BIOS should detect if the user presses the power button. If so, BIOS will jump out from looping and execute the normal shutdown process and power system.

Code	Cause and Troubleshooting Steps
1	BIOS ROM checksum in progress or failure System board failure, covers BIOS corruption or ROM error
2	No RAM detected No memory detected
3	Chipset Error (North and South Bridge Chipset, DMA/IMR/ Timer Error) , Time-Of-Day Clock test failure , Gate A20 failure , Super I/O chip failure , Keyboard controller test failure System board failure
4	RAM Read/Write failure Memory failure
5	Real-time clock power fail CMOS battery failure
6	Video BIOS test failure Video card failure
7	CPU - cache test failure Processor failure
8	Display Display failure

Specifications

Technical Specification

 **NOTE:** Offerings may vary by region. For more information regarding the configuration of your computer, click Start  (Start icon) → Help and Support, and then select the option to view information about your computer.

 **NOTE:** In Windows 8, navigate to Help and Support to view information about your computer.

Table 7. System Information

Feature	Description
Chipset	Intel 8 Series
DRAM bus width	64 bit
Flash EPROM	W25Q64FVSSIQ

Table 8. Processor

Feature	Description
L3 smart cache	3 MB and 4 MB

Table 9. Memory

Feature	Description
Memory connector	HM87
Memory capacity	8 GB
Memory type	SO-DIMM
Minimum memory	4 GB
Maximum memory	8 GB

Table 10. Audio

Feature	Description
Type	Two 1.5 watt speakers and One 2watt subwoofer
Controller	Realtek ALC290Q
Internal microphone supports	Digital microphone x 2
Speakers	3
Volume controls	Program menus and keyboard shortcut keys

Table 11. Video

Feature	Description
Video type	UMA/DIS
Video Controller:	
UMA	Intel HD Graphics 4000
Discrete	Nvidia N14P-GV2
Data bus	64 bit
External display support	HDMI

Table 12. Camera

Feature	Description
Camera Resolution	1 Megapixel
Video Resolution (maximum)	1280 x 720 pixels
Diagonal viewing angle	74.00 degree

Table 13. Communication

Feature	Description
Network adapter	Ethernet 10/100/1000 Base-T
Wireless	Wi-fi 802.11 a/b/g/n

Table 14. Ports and Connectors

Feature	Description
Audio	combo jack
Video	HDMI
Network adapter	RJ-45
USB	3 (includes one USB PowerShare port)
Media card reader	SD

Table 15. Display

Feature	Description
Type	HD
Dimensions:	
Height	206.44 mm (8.12 inches)
Width	326.18 mm (12.84 inches)
Diagonal	14.0"
Active area (X/Y)	309.4 mm (12.18 inches) x 173.95 mm (6.84 inches)
Maximum resolution	1366 x 768 pixels

Feature	Description
Maximum Brightness	200 nits
Operating angle	135 degree
Refresh rate	60Hz / 40Hz
Minimum Viewing angles:	
Horizontal	40 (L) / 40 (R)
Vertical	10 (up) / 30 (down)
Pixel pitch	0.2265 (H) x 0.2265 (V) mm

Table 16. Keyboard

Feature	Description
Number of keys	80

Table 17. Touchpad

Feature	Description
Active Area:	
X-axis	111.40 mm (4.38 inches)
Y-axis	76.40 mm (3 inches)

Table 18. Battery

Feature	Description
Type	ICP666480
Dimensions:	
Height	99.5 mm (3.91 inches)
Width	198.5 mm (7.81 inches)
Depth	7.5 mm (0.30 inch)
Weight	269 grams (0.60 lb)
Charge time	3 hour
Life span	300 discharge/charge cycles
Voltage	11.4 V
Temperature range:	
Operating	0 °C to 50 °C
Non-Operating	0 °C to 65 °C
Coin-cell battery	LI 3V 83 MAH

Table 19. AC Adapter

Feature	Description
Type	AC adapter
Input voltage	90 ~ 264 VAC
Input current (maximum)	1.6 A / 1.5 A
Input frequency	50 Hz ~ 60 Hz
Output power	65 W / 90 W
Output current	0 A to 3.34 A / 4.62 A
Rated output voltage	19.5 V
Temperature range:	
Operating	0 °C to 40 °C
Non-Operating	95 °C

Table 20. Physical

Feature	Non-Touch	Touch
Height	18.30 mm (0.72 inch)	19.35 mm (0.76 inch)
Width	337.60 mm (13.29 inches)	337.60 mm (13.29 inches)
Depth	233.50 mm (9.19 inch)	233.50 mm (9.19 inch)
Weight (minimum)	1.53 kg (3.37 lb)	1.62 kg (3.57 inch)

Table 21. Environmental


Feature	Description
Temperature:	
Operating	0 °C to 35 °C
Storage	-20 °C to 60 °C
Relative humidity (maximum):	
Operating	20% – 90%
Storage	20% – 95%

Table 22. Altitude

Altitude (maximum):	
Operating	-15.2 m to 2000m (-50 to 6560 ft) 0° to 35°C
Non-Operating	-15.2 m to 10,668 m (-50 ft to 35,000 ft)
Airborne contaminant level	G2 or lower as defined by ISA - S71.04 – 1985

Contacting Dell

Contacting Dell

 **NOTE:** If you do not have an active Internet connection, you can find contact information on your purchase invoice, packing slip, bill, or Dell product catalog.

Dell provides several online and telephone-based support and service options. Availability varies by country and product, and some services may not be available in your area. To contact Dell for sales, technical support, or customer service issues:

1. Visit dell.com/support
2. Select your support category.
3. Verify your country or region in the Choose a Country/Region drop-down menu at the top of page.
4. Select the appropriate service or support link based on your need.